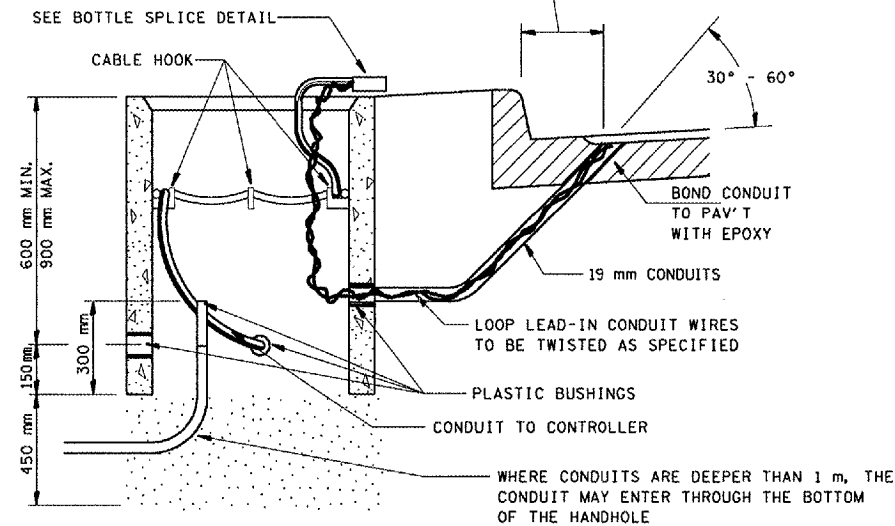


F.A. RTE.	SECTION	COUNTY	TOTAL SHEETS	SHEET NO.
325		MONTGOMERY	39	38
STA.		TO STA.		
FED. ROAD DIST. NO.		ILLINOIS FED. AID PROJECT		

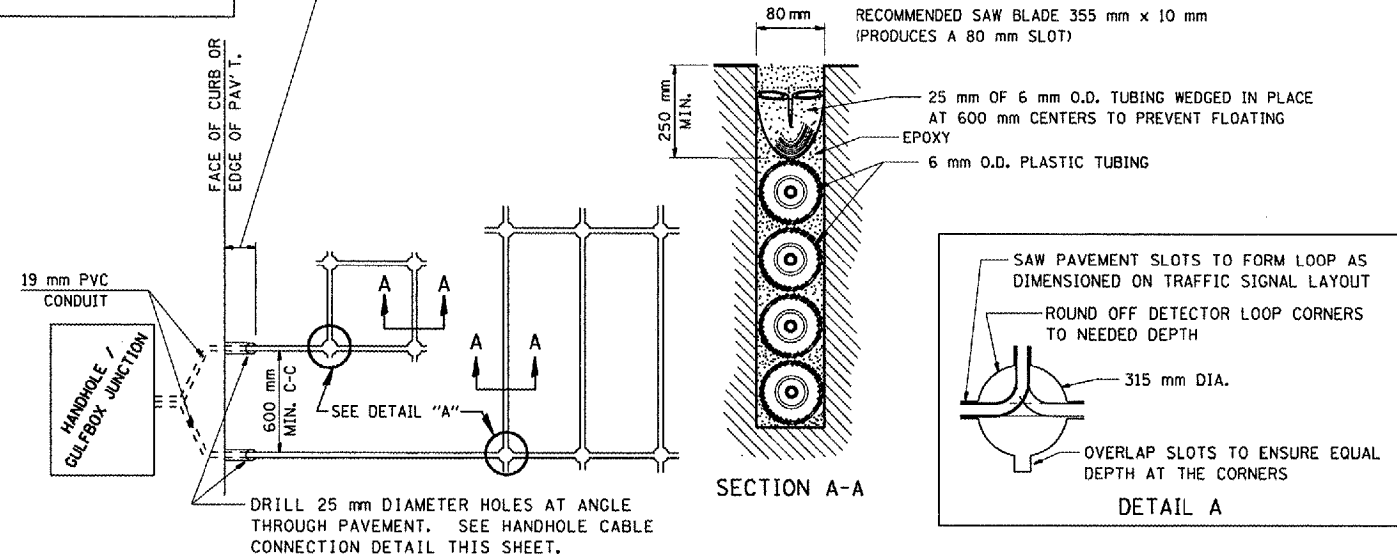
\* 21 RS-4; 24 RS-7  
CONTRACT NO. 72444

LENGTH OF SLACK FOR LOOP LEAD-INS SHALL PROVIDE FOR MAKING THE SPLICE ON TOP OF THE HANDHOLE AND ONE COMPLETE LOOP OF THE INTERIOR OF THE HANDHOLE, THE SPLICE SHALL BE SUPPORTED BY A CABLE HOOK.

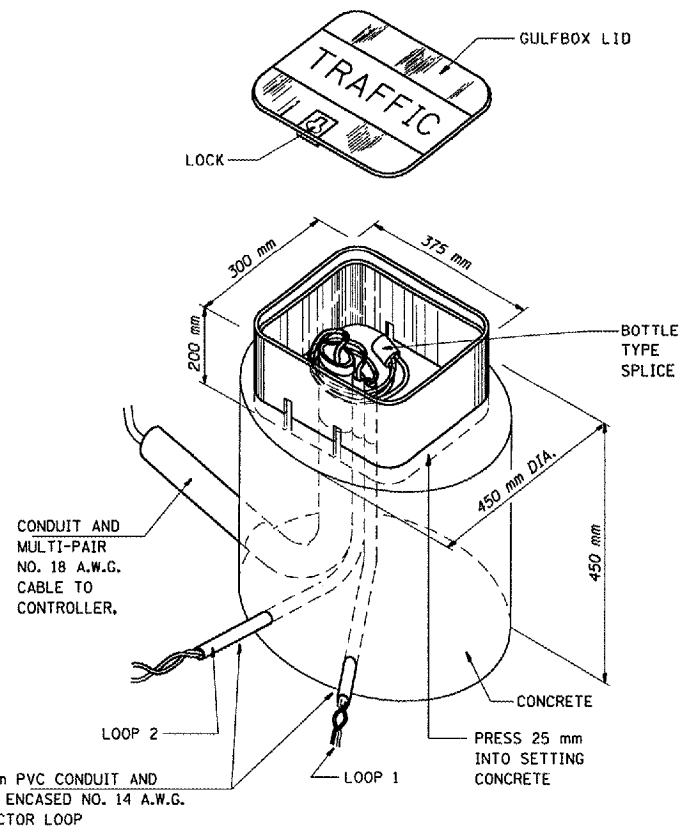
THE LOOP LEAD-IN CONDUIT HOLES SHALL BE PLACED AS CLOSE TO THE CURB AS POSSIBLE TO PERMIT SAW OVERLAP WITHOUT SCARRING FACE OF CURB.  
IN NON-CURB LOCATIONS THE DISTANCE SHALL NOT BE LESS THAN 150 mm.



HANDHOLE CABLE CONNECTIONS

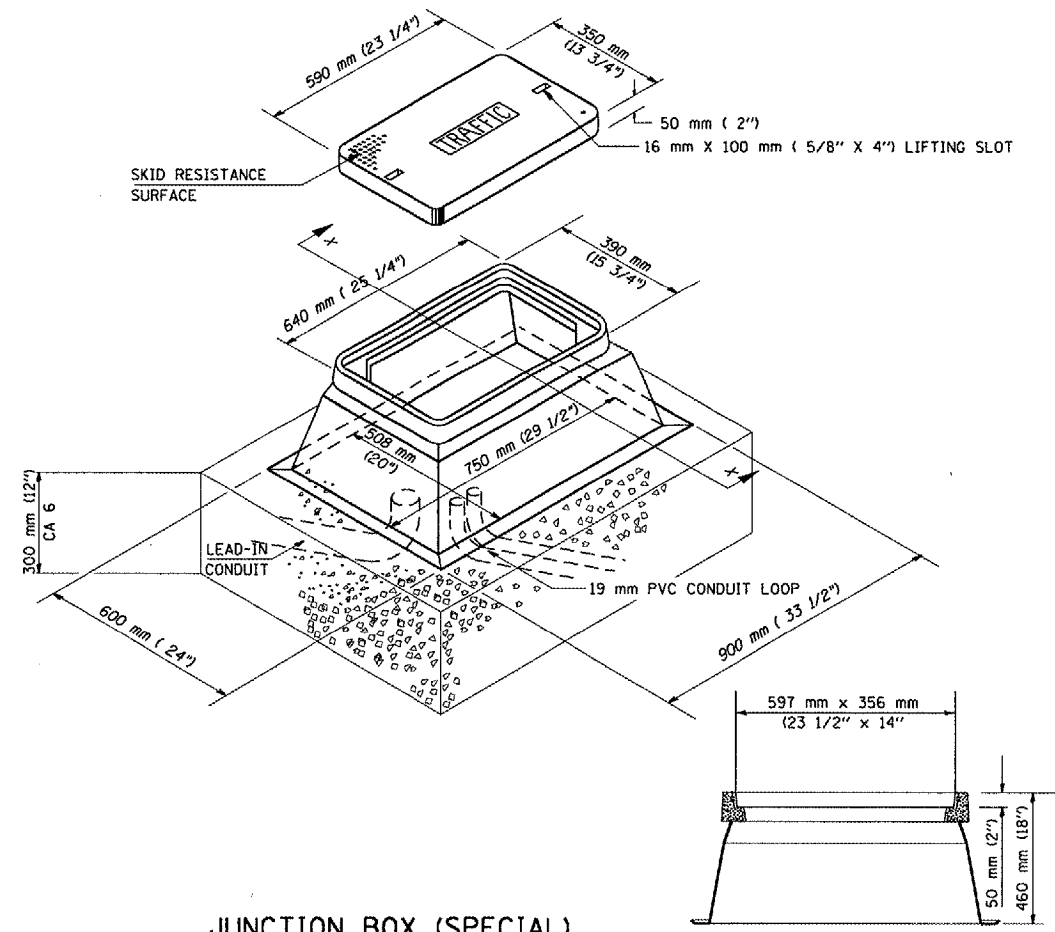


PAVEMENT SAWING DETAIL FOR TUBE ENCASED DETECTOR LOOP WIRE



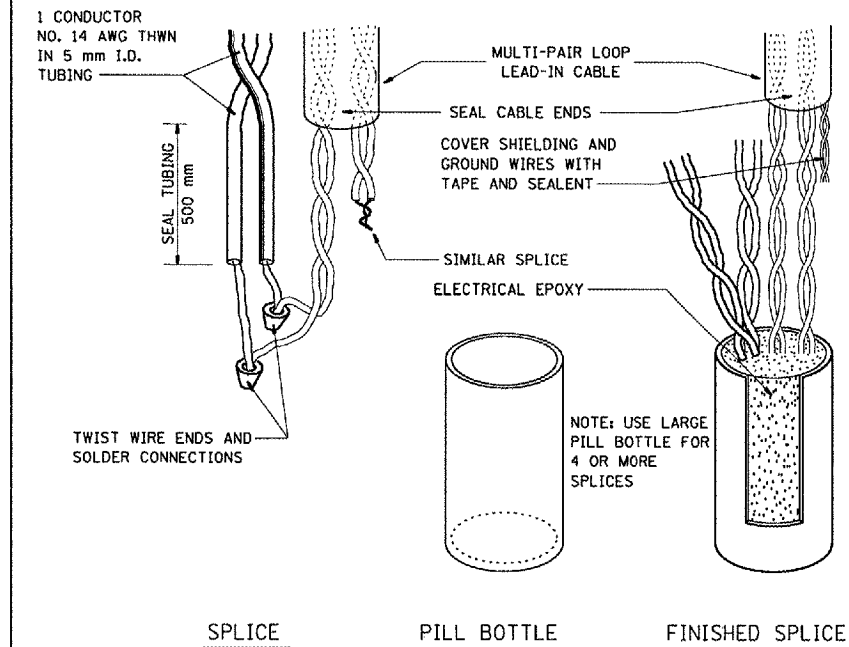
GULFBOX JUNCTION DETAIL

(SHOWING CONNECTION OF TUBE-ENCASED DETECTOR LOOP TO MULTI-PAIR LEAD-IN CABLE)



JUNCTION BOX (SPECIAL)

SECTION X-X



BOTTLE SPLICE DETAIL

REVISIONS		ILLINOIS DEPARTMENT OF TRANSPORTATION TRAFFIC SIGNAL DETECTOR LOOP DETAILS
NAME	DATE	

\*DGN-SPEC\*  
 \*DATE-TIME\*  
 \*REF\*  
 \*REF\*  
 \*REF\*  
 PROJECT: D6MSTDS: MDETLOOP.DGN