

F.A. RTE.	SECTION	COUNTY	TOTAL SHEETS	SHEET NO.
325		MONTGOMERY	39	1

• 21RS-4; 24RS-7

STATE OF ILLINOIS
 DEPARTMENT OF TRANSPORTATION
 DIVISION OF HIGHWAYS
**PROPOSED
 HIGHWAY PLANS**

FAP ROUTE: 325 (IL 16)
 SECTION 21RS-4; 24RS-7
 PROJECT: F-0325(045)
 MONTGOMERY COUNTY

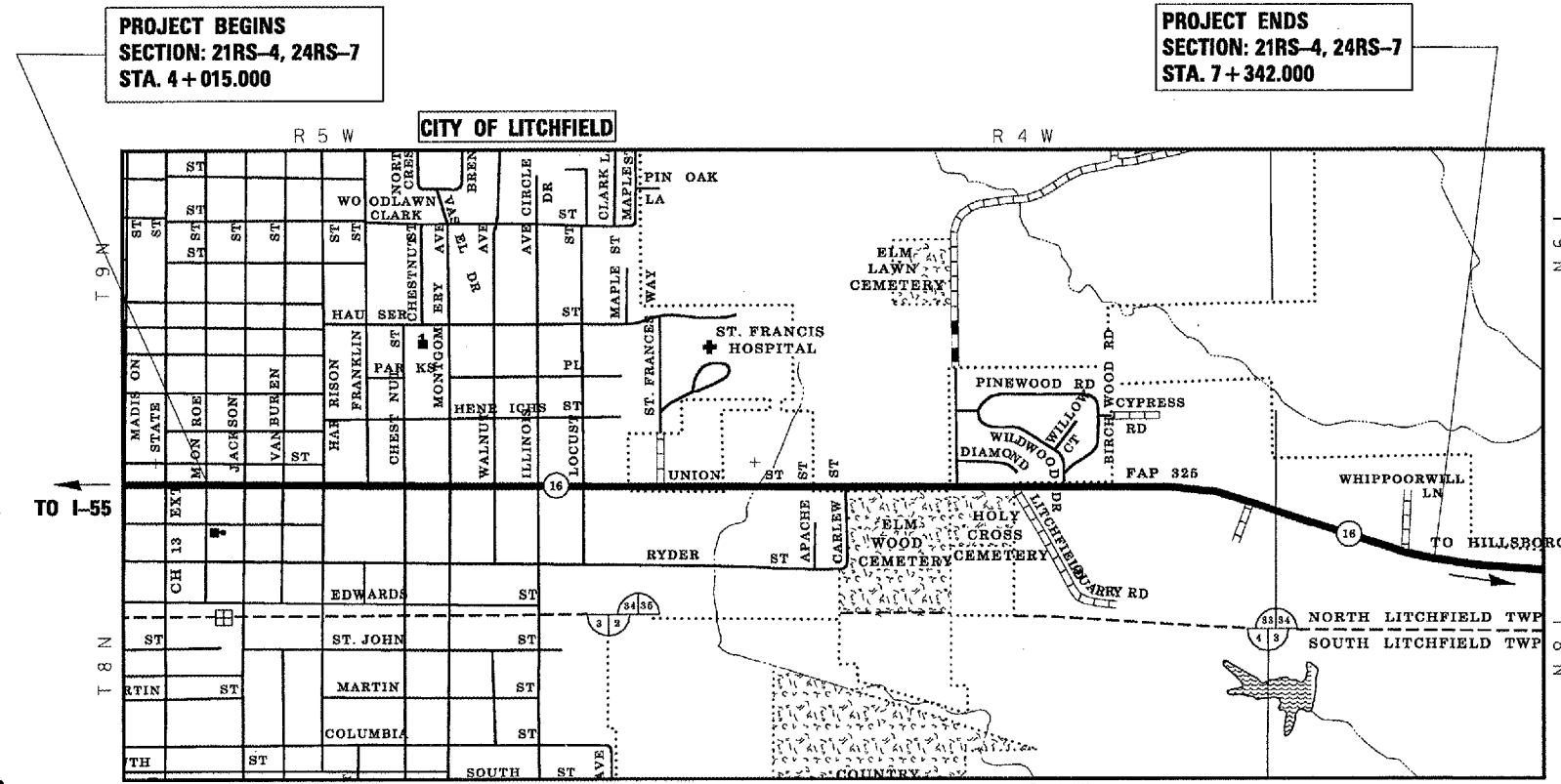
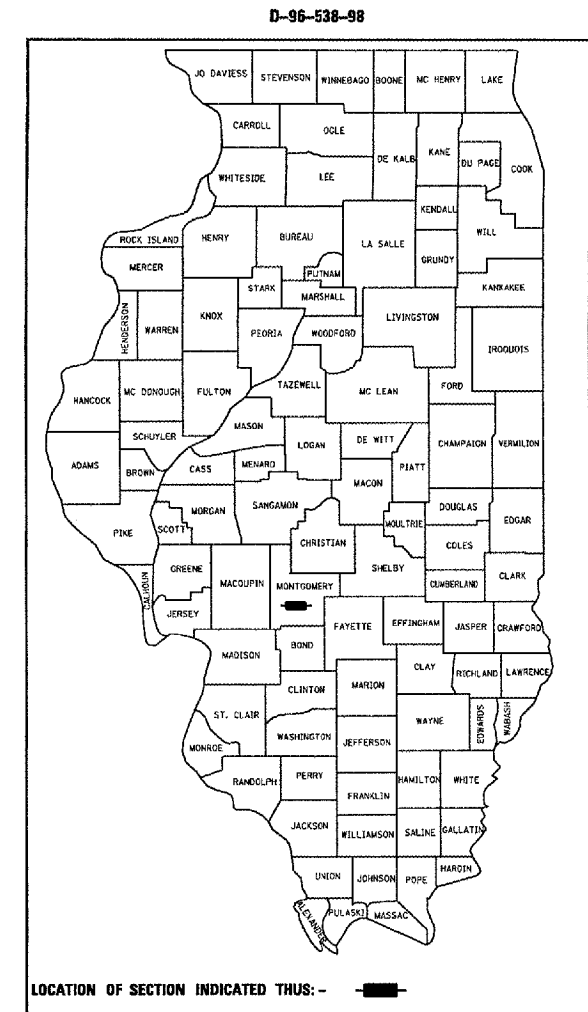
C-96-511-06

INDEX OF SHEETS

- 1 COVER SHEET
- 2 GENERAL NOTES AND COMMITMENTS
- 3 - 5 SUMMARY OF QUANTITIES
- 6 - 9 SCHEDULE OF QUANTITIES
- 10 - 11 TYPICAL SECTIONS
- 12 CROSS TIES
- 13 BENCHMARKS
- 14 - 33 PLAN SHEETS
- 34 BUTT JOINT DETAILS
- 35 SIDEROAD TREATMENT DETAILS
- 36 BITUMINOUS RAMP DETAILS
- 37 PROPOSED CABLE DIAGRAM
- 38 - 39 TRAFFIC SIGNAL DETECTOR LOOP DETAILS

STANDARDS

- 060001-04
- 442201-01
- 606001-02
- 701001-01
- 701006-02
- 701011-01
- 701501-03
- 702001-03
- 780001-01
- 781001-02
- 886001
- 886006

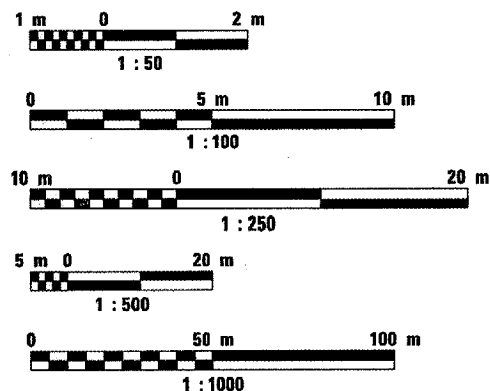


LAYOUT MAP

PROJECT BEGINS
 SECTION: 21RS-4, 24RS-7
 STA. 4 + 015.000

PROJECT ENDS
 SECTION: 21RS-4, 24RS-7
 STA. 7 + 342.000

METRIC RATIOS



FULL SIZE PLANS HAVE BEEN PREPARED USING STANDARD ENGINEERING SCALES. REDUCED SIZED PLANS WILL NOT CONFORM TO STANDARD SCALES. IN MAKING MEASUREMENTS ON REDUCED PLANS, THE ABOVE SCALES MAY BE USED.

J.U.L.I.E.
 JOINT UTILITY LOCATION INFORMATION FOR EXCAVATION
 1-800-892-0123

AVERGAE DAILY TRAFFIC: 9900 (2001)
 SU: 446
 MU: 426

GROSS LENGHT OF PROJECT = 3327.000 M = 3.327 KM
 NET LENGHT OF PROJECT = 3327.000 M = 3.327 KM

STATE OF ILLINOIS
 DEPARTMENT OF TRANSPORTATION
 DIVISION OF HIGHWAYS

SUBMITTED Apr. 8, 2005
Christine M. Reed DISTRICT ENGINEER

May 13, 2005
Mike Stone ENGINEER OF DESIGN AND ENVIRONMENT

May 13, 2005
Victor Mader DIRECTOR, DIVISION OF HIGHWAYS

**PRINTED BY THE AUTHORITY
 OF THE STATE OF ILLINOIS**

PROJECT LEADER: JOHN NEGANARD (217) 782-8990
 SR. SQUAD LEADER: MARK DUST (217) 785-0597