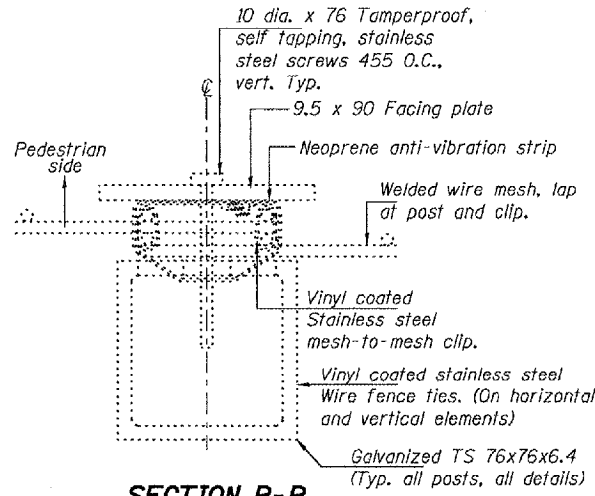


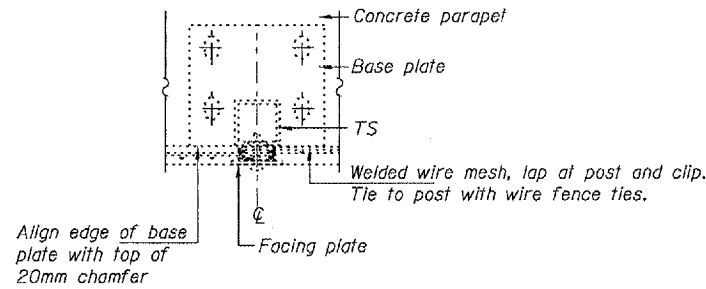
STATE OF ILLINOIS
DEPARTMENT OF TRANSPORTATION

ROUTE NO.	SECTION	COUNTY	SHEET NO.	SHEET NO.
			18	16
FED. ROAD DIST. NO. 7	ILLINOIS	FED. AID PROJECT-		

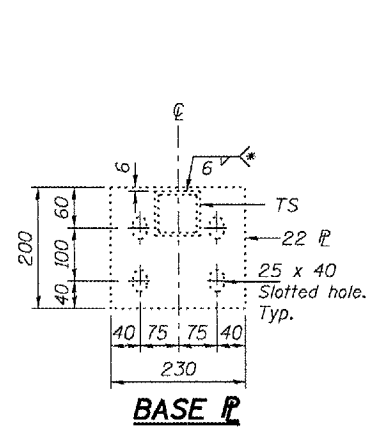
Contract #68492



SECTION B-B
Typical at each post

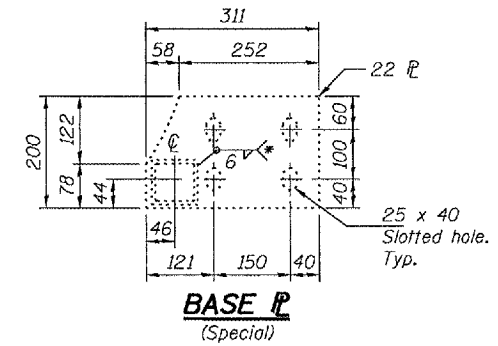


DETAIL E

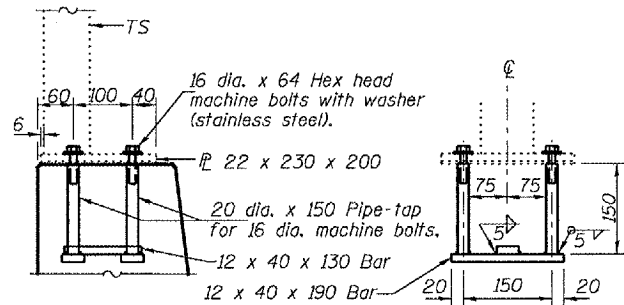


BASE P

* Built out to obtain full throat thickness



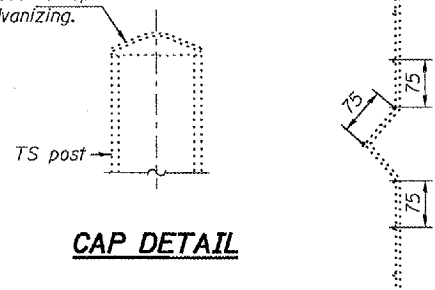
BASE R
(Special)



ANCHOR BOLT ASSEMBLY

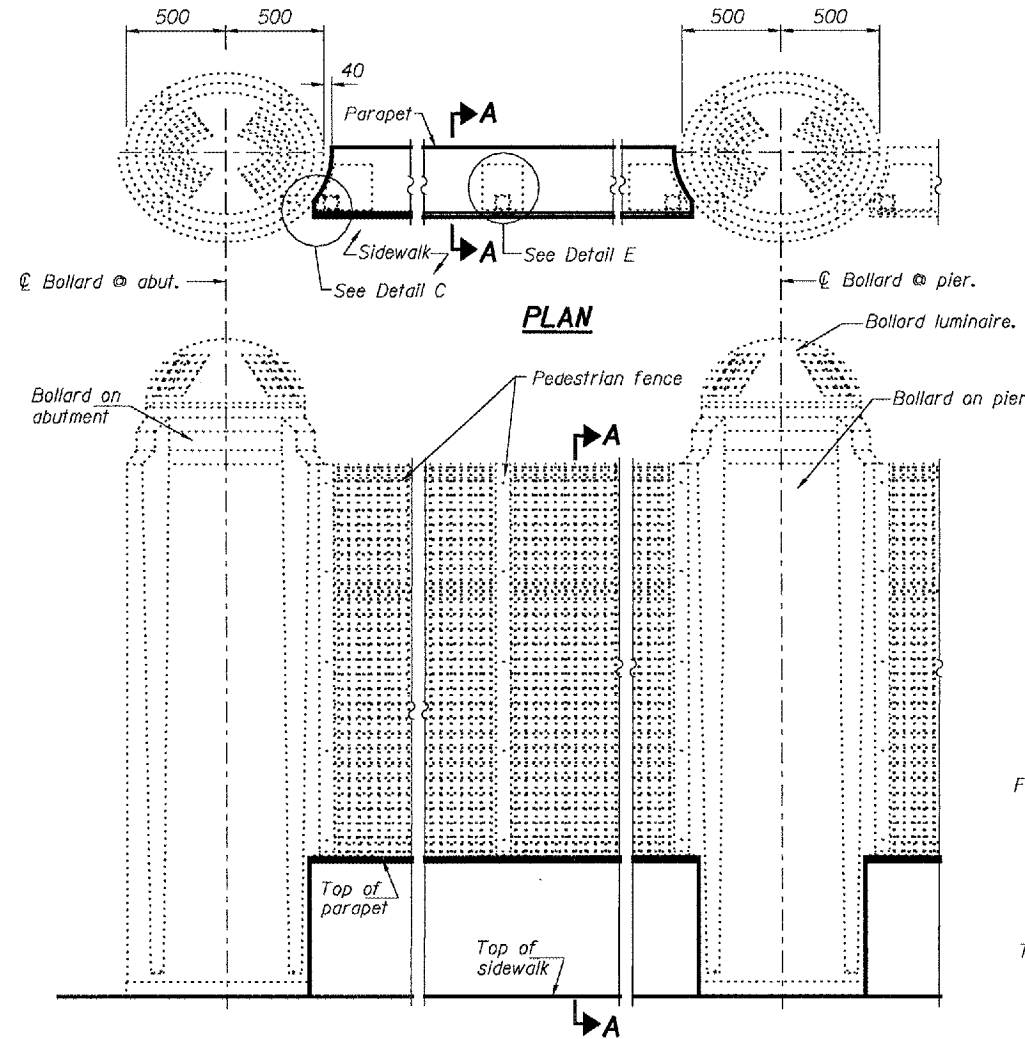
In lieu of the cast-in-place anchor device shown, the Contractor has the option of drilling and epoxy grouting 16 mm hot dip galvanized anchor rods. Embedment shall be according to the manufacturer's specifications. Cost included with Concrete Superstructure.

M/S steel cap welded to top of post before galvanizing.



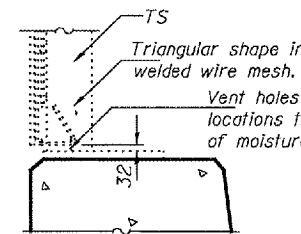
CAP DETAIL

DETAIL F
(Bend detail)

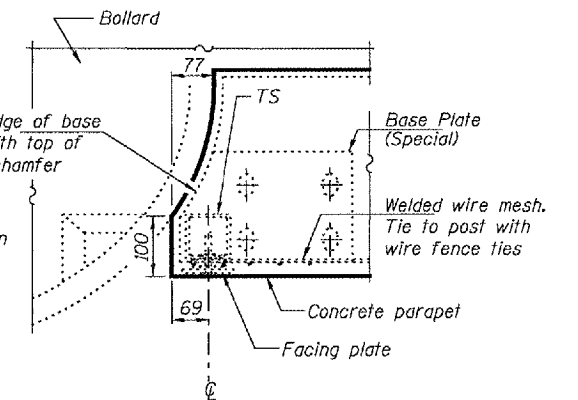


ELEVATION

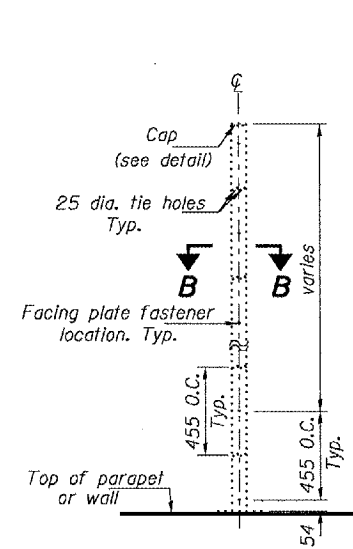
Pedestrian fence and posts to be removed, stored & reused.



DETAIL D
(At parapet)

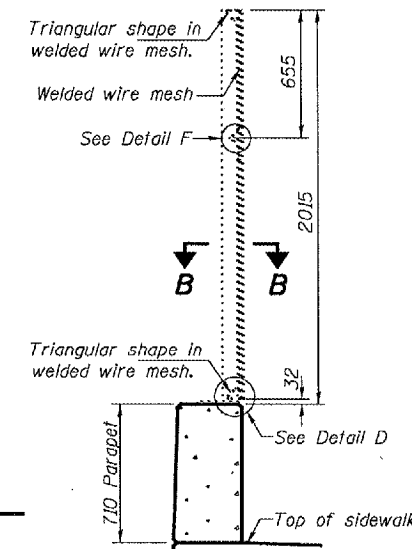


DETAIL C
(Connection @ Bollard)



TS POST ELEVATION

Facing plate not shown for clarity.



SECTION A-A
Fence Type II

DESIGNED	DAB
CHECKED	SJB
DRAWN	baliva
CHECKED	DAB SJB

EXAMINED	John A. Morris ENGINEER OF STRUCTURAL SERVICES
PASSED	Ralph E. Anderson ENGINEER OF BRIDGES AND STRUCTURES

FENCE DETAILS
SHERIDAN ROAD OVER
FAI ROUTE 74 (I-74)
PEORIA COUNTY
SN 072-0193