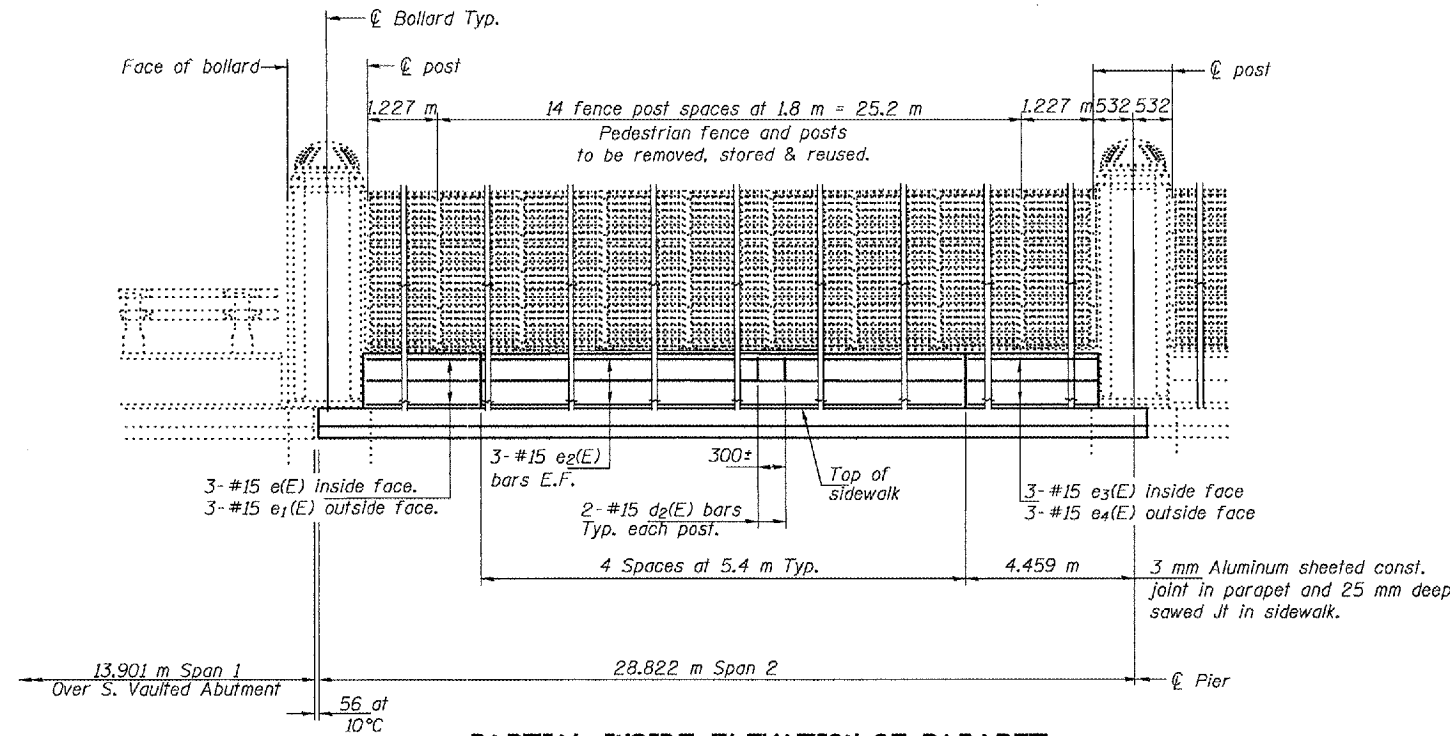


STATE OF ILLINOIS  
DEPARTMENT OF TRANSPORTATION

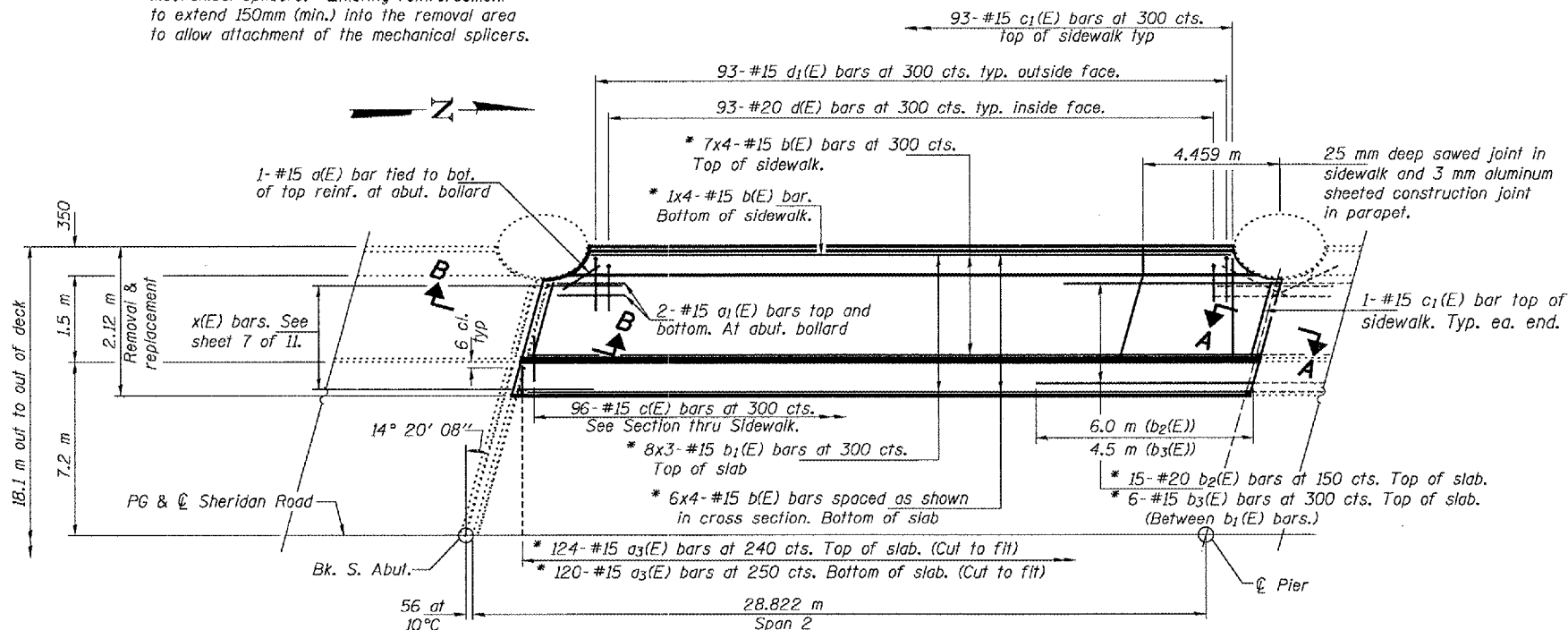
ROUTE NO.	SECTION	COUNTY	SHEET NO.	SHEET NO.
			18	12
FED. ROAD DIST. NO. 7		ILLINOIS	FED. AID PROJECT-	

Contract #68492



**PARTIAL INSIDE ELEVATION OF PARAPET**

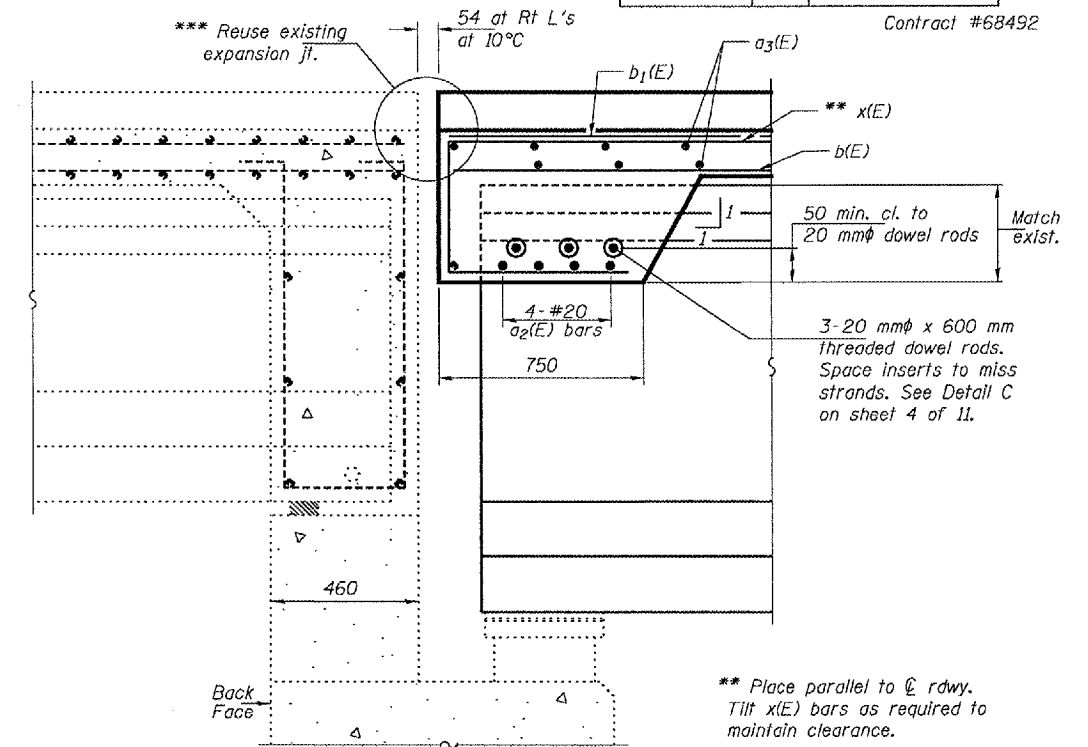
\* Attach to existing reinforcement with mechanical splicers. Existing reinforcement to extend 150mm (min.) into the removal area to allow attachment of the mechanical splicers.



**PARTIAL PLAN**

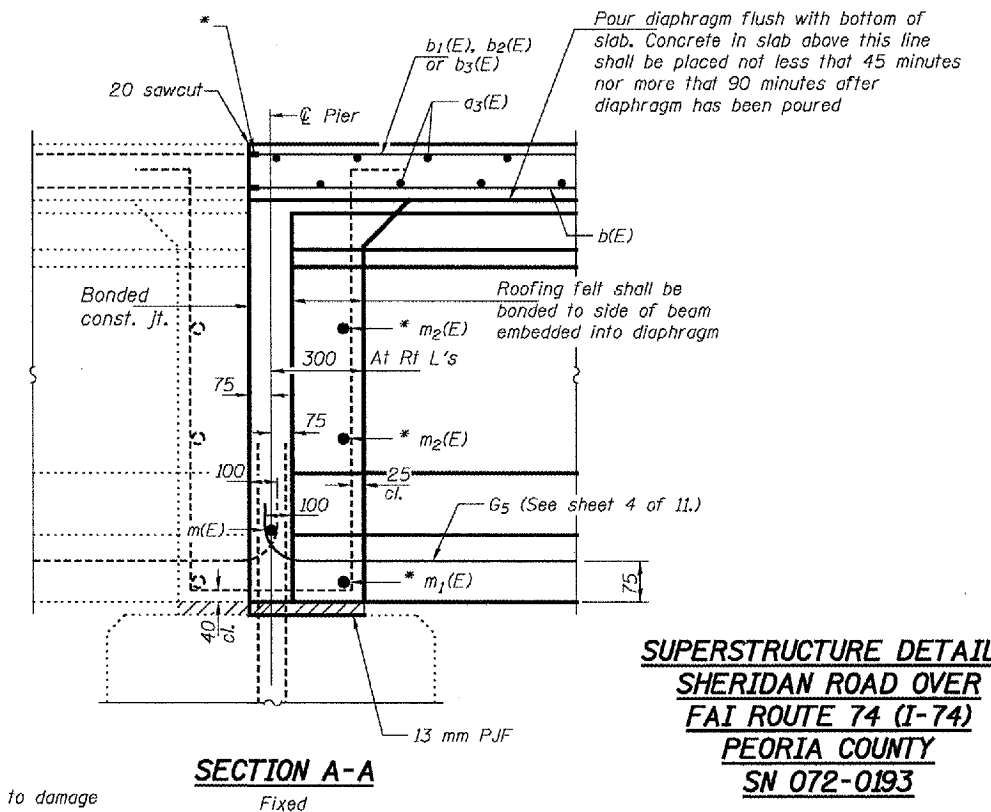
Notes:  
All dimensions are in millimeters (mm) except as noted.  
Reinforcement bars designated (E) shall be epoxy coated.  
Cost of 50φ conduits & 4.4 Kg/ m roofing felt is included with Concrete Superstructure.  
Bars indicated thus 7x3-#15 etc. indicates 7 lines of bars with 3 lengths per line.  
All edges shall have 20 mm chamfer except as noted.  
Existing reinforcement extending into the removal area shall be cleaned, straightened and incorporated into the new construction.  
Any reinforcement bars that are damaged during concrete removal shall be replaced with an approved bar splicer or anchorage system.  
Cost shall be included with Concrete Removal.  
Cut reinforcement in field to clear scuppers & bollards.  
The Contractor shall use extreme care during concrete removal so as not to damage the PPC I-Beam.

**MIN. BAR LAPS**  
#15 bars = 510



**SECTION B-B**

\*\*\* Reuse existing expansion jt.  
\*\*\* The existing expansion joint shall be reused. It shall be the Contractor's responsibility to ensure that the strip seal, the locking edge rails, the studs & all other components of the joint system are not damaged during the construction process.  
Cost included with Concrete Removal.



**SECTION A-A**  
Fixed

**SUPERSTRUCTURE DETAILS**  
**SHERIDAN ROAD OVER**  
**FAI ROUTE 74 (I-74)**  
**PEORIA COUNTY**  
**SN 072-0193**

DESIGNED	DAB
CHECKED	SJB
DRAWN	baliva
CHECKED	DAB SJB

May 10, 2005  
EXAMINED *John A. Morris*  
ENGINEER OF STRUCTURAL SERVICES  
PASSED *Walsh E. Anderson*  
ENGINEER OF BRIDGES AND STRUCTURES