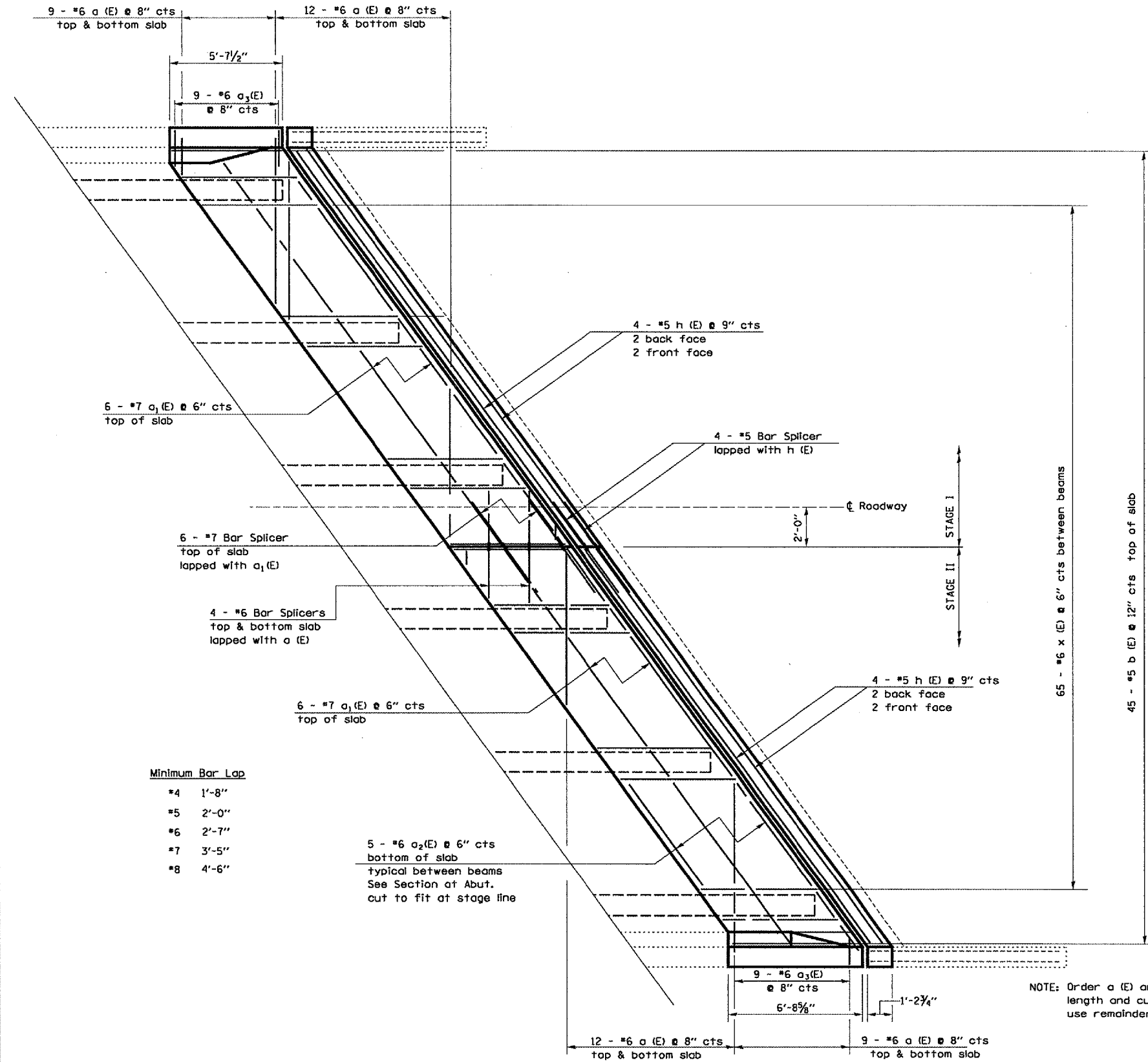


| F.A.I. RTE. | SECTION | COUNTY | TOTAL SHEETS | SHEET NO. |
|---------------------|------------|----------|-------------------|-----------|
| 412 | ISO-GVB1-1 | LASALLE | 25 | 9 |
| FED. ROAD DIST. NO. | | ILLINOIS | STATE AID PROJECT | |

NOTE: Order a (E) and a₃(E) bars full length and cut to fit skew and use remainder in opposite end

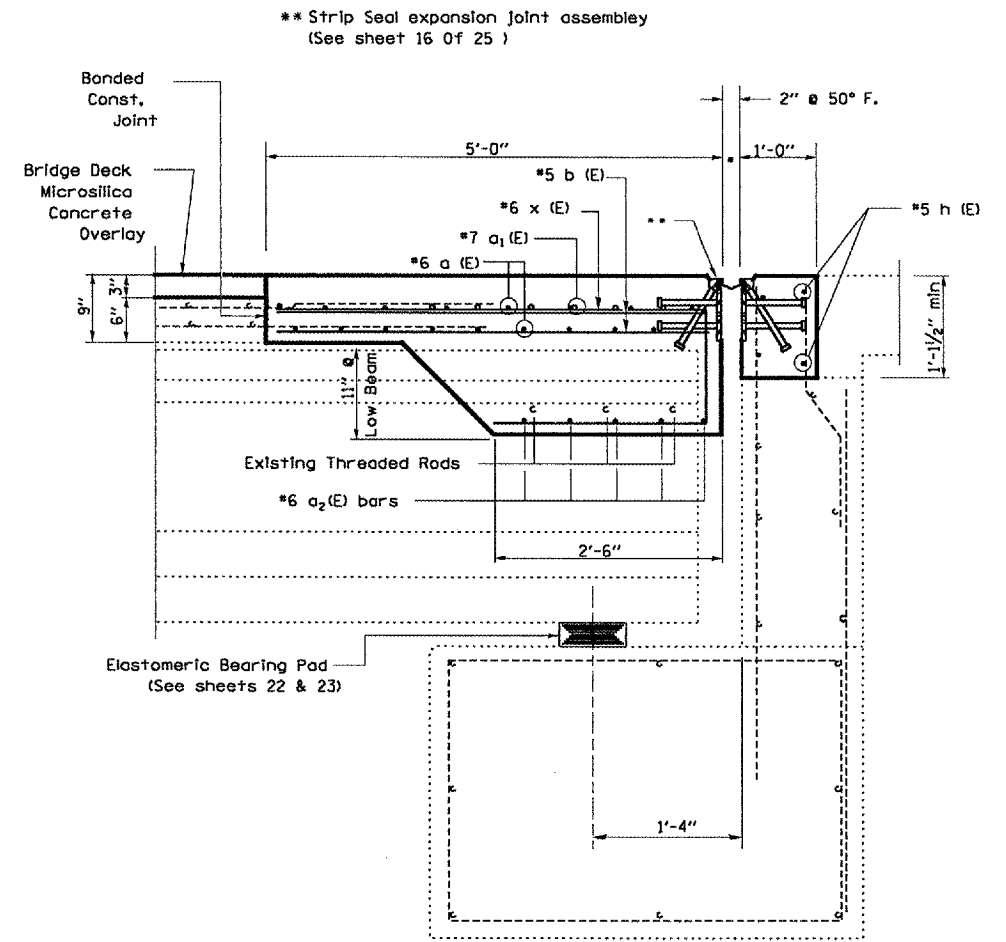


Minimum Bar Lap

- #4 1'-8"
- #5 2'-0"
- #6 2'-7"
- #7 3'-5"
- #8 4'-6"

NOTE: Order a (E) and a₃(E) bars full length and cut to fit skew and use remainder in opposite end

PLAN



ABUTMENT SECTION

@ RT <'S

| REVISIONS | |
|-----------|------|
| NAME | DATE |
| | |
| | |
| | |
| | |
| | |
| | |
| | |
| | |
| | |
| | |

ILLINOIS DEPARTMENT OF TRANSPORTATION
CONSTRUCTION DETAILS
NORTH ABUTMENT
 S.N. 050-0167 (SB)
 F.A.I. 412 OVER C. & N.W. RAILROAD
 SECTION (50-6VB)I-1
 STA. 1429 + 12.74