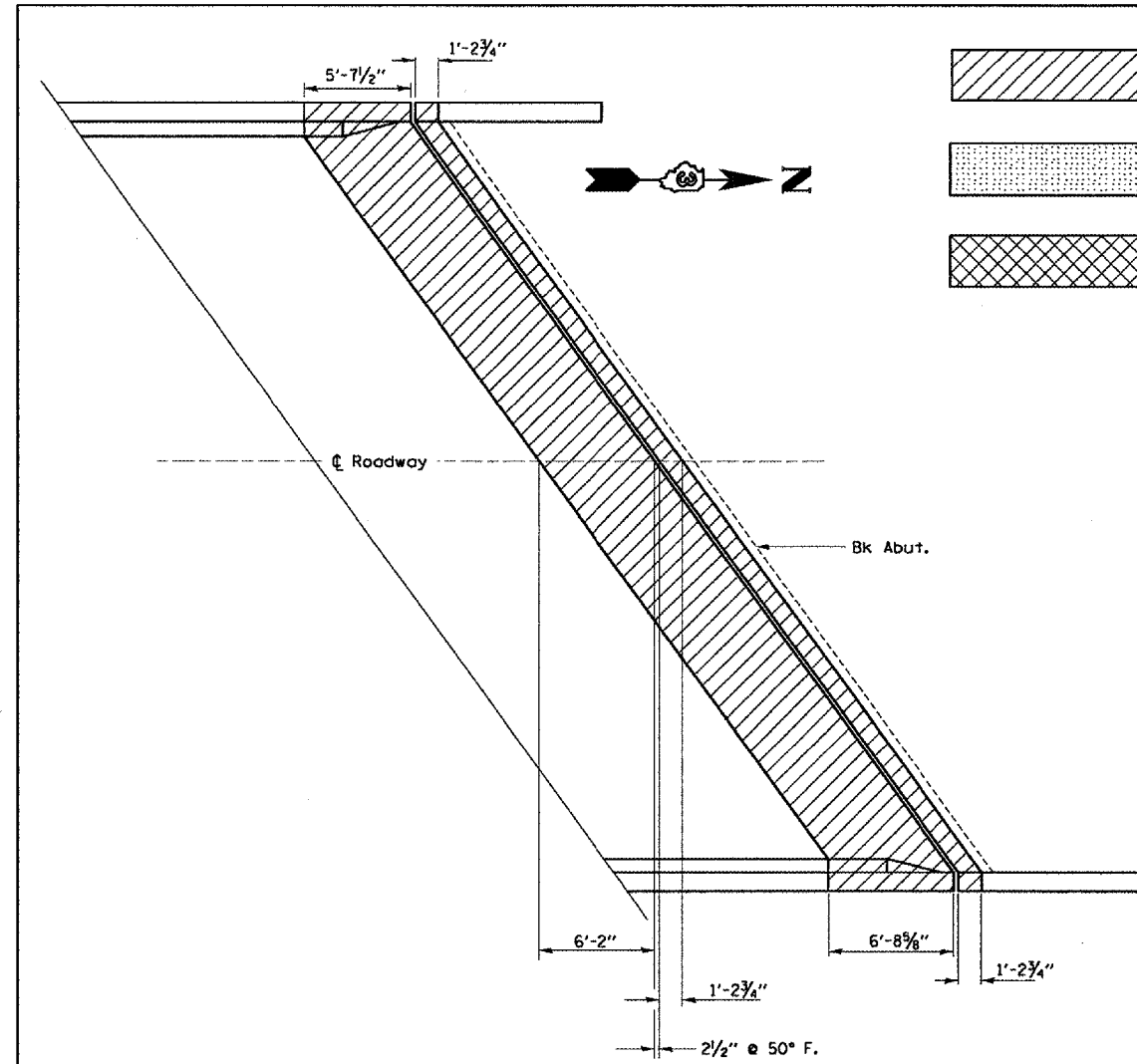
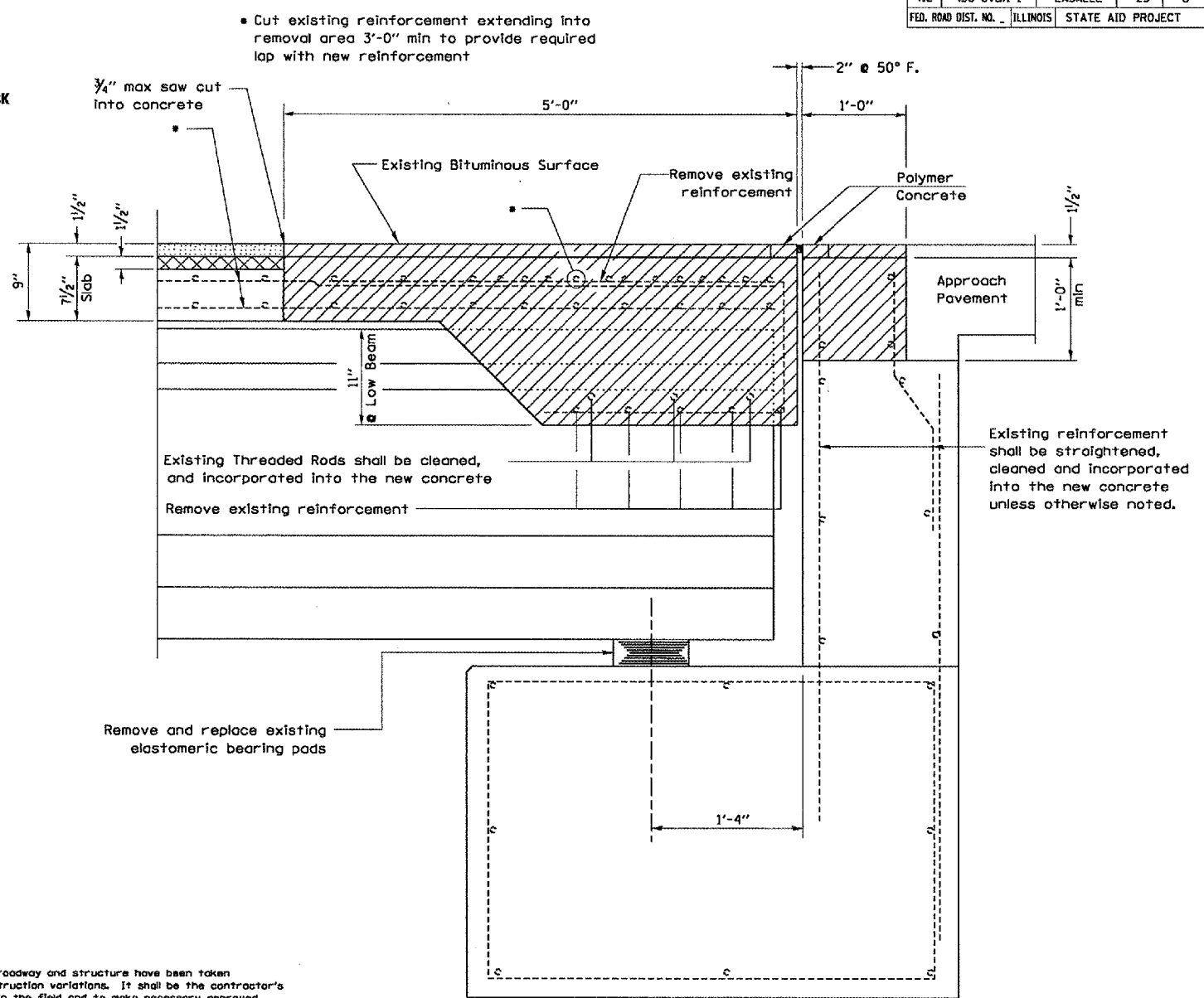


F.A.I. RTE.	SECTION	COUNTY	TOTAL SHEETS	SHEET NO.
412	(50-6VB)I-1	LASALLE	25	6
FED. ROAD DIST. NO. _		ILLINOIS		STATE AID PROJECT



PLAN



ABUTMENT SECTION

@ RT <'S

GENERAL NOTES:

- Plan dimensions and details relative to the existing roadway and structure have been taken from existing plans and are subject to nominal construction variations. It shall be the contractor's responsibility to verify such dimensions and details in the field and to make necessary approved adjustments prior to construction or ordering of materials. Such variations shall not be cause for additional compensation for a change in the scope of the work, however, the contractor will be paid for the quantity actually furnished at the unit price bid for the work.
- Two coats of an approved Bridge Seal Sealer shall be applied to the deck and face of parapet to the limits shown on plan details. Cost of this work shall be paid for per sq yd for "Concrete Sealer".
- New Reinforcement bars shall be Epoxy Coated.
- Reinforcement bars that are to remain in place which are damaged during concrete removal operations shall be repaired or replaced using approved bar splicer or anchorage system. Cost Included with "Concrete Removal".
- The roadway expansion plates shall be flame cut as provided in Article 505.04(x) of the Standard Specifications.
- All expansion joint plates and attached bars shall be AASHTO M 270 Grade 36
- Expansion joint plates and attached bars shall be shop painted with the Inorganic zinc rich primer.
- Anchor bolts, High Strength Steel Bolts, Nuts and washers shall conform to the requirements of Article 1006.08 and Article 1006.09 of the Standard Specifications.
- Reinforcement bars shall conform to the requirements of AASHTO M 31 or M322 Grade 60.
- Existing reinforcement extending into the concrete removal area shall be cut to provide the required bar lap for the size of bar as shown. All other reinforcement shall be removed and replaced with new Epoxy Coated bars.
- The Contractor shall exercise care during concrete removal operations so the the existing PPC Beams are not damaged. If the beams are damaged due to the Contractor's operations, they shall be repaired to the satisfaction of the Engineer at no expense to the department.
- Removal of existing expansion joint steel, anchor studs, expansion material shall be paid for separately but shall be included in the cost of "Concrete Removal".

BILL OF MATERIAL NORTH ABUTMENT

Item	Unit	Total
CONCRETE REMOVAL	CU. YD.	15.9
JACK AND REPLACE BEARINGS	EACH	6

REVISIONS	
NAME	DATE

ILLINOIS DEPARTMENT OF TRANSPORTATION
CONCRETE REMOVAL DETAILS
NORTH ABUTMENT
 S.N. 050-0167 (SB)
 F.A.I. 412 OVER C. & N.W. RAILROAD
 SECTION (50-6VB)I-1
 STA. 1429 +12.74

*DATE - MARCH 06, 2005
 *DGN - CM05/CM327/DETAILS.DGN