

F.A. RTE.	SECTION	COUNTY	TOTAL SHEETS	SHEET NO.
VARIOUS	#	VARIOUS	14	1

D-3 HIGHWAY DAMAGE REPAIR 2005

STATE OF ILLINOIS
DEPARTMENT OF TRANSPORTATION
DIVISION OF HIGHWAYS

**PROPOSED
HIGHWAY PLANS**

VARIOUS ROUTES
D-3 HIGHWAY DAMAGE REPAIR 2005
VARIOUS COUNTIES

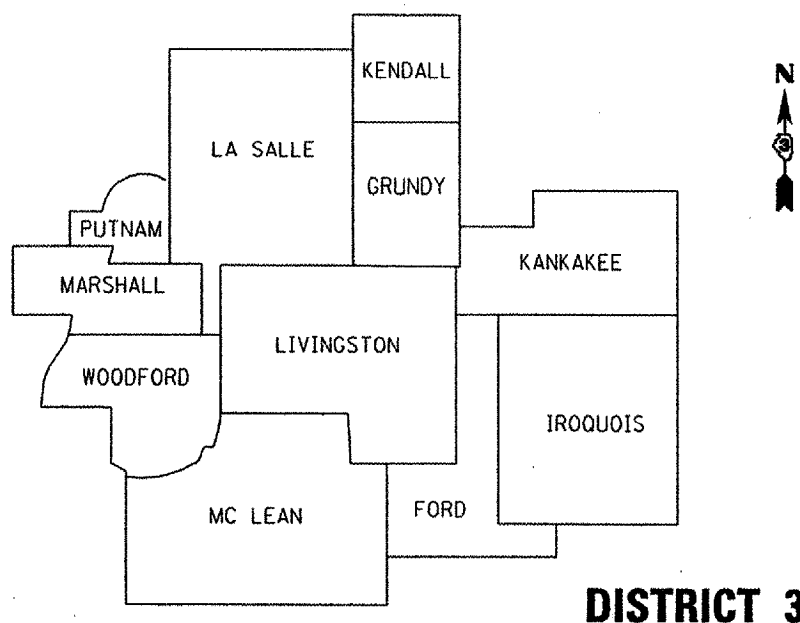
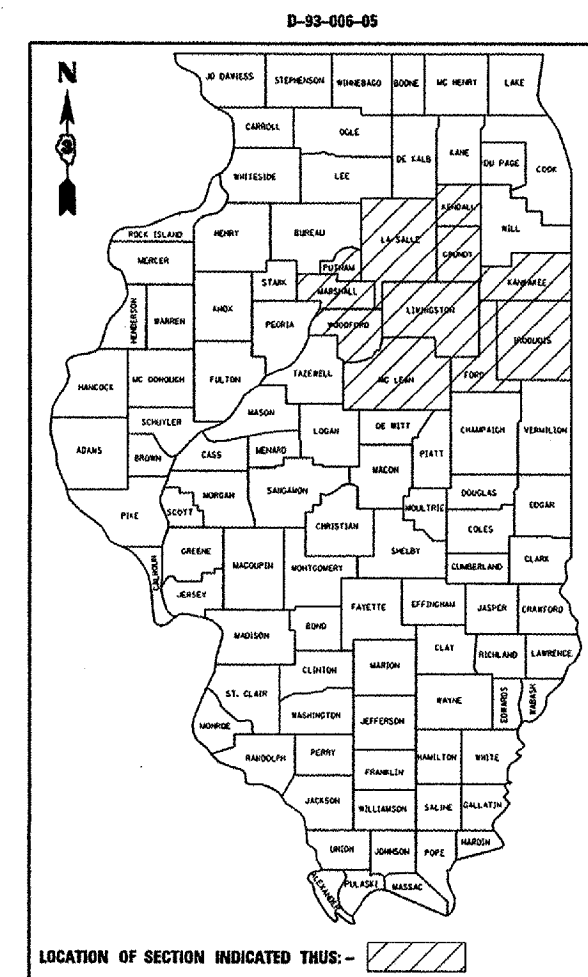
- INDEX OF SHEETS**
- 1 COVER SHEET
 - 2 STANDARDS AND GENERAL NOTES
 - 3-4 SUMMARY OF QUANTITIES
 - 5 REFLECTOR AND TERMINAL MARKER PLACEMENT DETAIL
 - 6 IMPACT ATTENUATOR INSTALLATION DETAIL
 - 7 IMPACT ATTENUATOR (NON-REDIRECTIVE) DETAIL
 - 8-9 TRAFFIC BARRIER TERMINAL, TYPE 1
 - 10-12 TRAFFIC BARRIER TERMINAL, TYPE 3 & 3A
 - 13-14 TRAFFIC BARRIER TERMINAL, TYPE 4

HIGHWAY STANDARDS

SEE PAGE 2 FOR LIST OF HIGHWAY STANDARDS

C - 93 - 052 - 05

REPAIRING MOTORIST CAUSED DAMAGE TO HIGHWAY FACILITIES



LOCATION MAP
NOT TO SCALE

MICROFILMED _____
REEL NUMBER _____
AWARDED _____
RESIDENT ENGINEER _____
AS BUILT CHANGES WERE MADE
ON THE FOLLOWING SHEETS _____

J.U.L.I.E.
JOINT UTILITY LOCATION INFORMATION FOR EXCAVATION
1-800-892-0123

CONTRACT **66660**
DISTRICT 3 NO. (815) 434-6131

PROJECT ENGINEER: KRIS FOGARTY
PLANS /FILE: MARK JONES /758-201

STATE OF ILLINOIS
DEPARTMENT OF TRANSPORTATION
DIVISION OF HIGHWAYS

SUBMITTED March 31, 2005
Gregory L. Mounts
DEPUTY DIRECTOR OF HIGHWAYS, REGION ENGINEER

May 13, 2005
Mike Hine
ENGINEER OF DESIGN AND ENVIRONMENT

May 13, 2005
Justin Mader
DIRECTOR OF HIGHWAYS, CHIEF ENGINEER

**PRINTED BY THE AUTHORITY
OF THE STATE OF ILLINOIS**

F. A. REL.	SECTION	COUNTY	TOTAL SHEETS	SHEET NO.
VAR.	*	VAR.	14	2
STA.	TO STA.			
FED. ROAD DIST. NO.	ILLINOIS	FED. AID PROJECT		

• D-3 HIGHWAY DAMAGE REPAIR 2005
CONTRACT #66660

HIGHWAY STANDARDS

509001	TUBULAR THRIE BEAM RETROFIT RAIL FOR BRIDGES
606001-02	CONCRETE CURB TYPE B AND COMBINATION CONCRETE CURB AND GUTTER
630001-05	STEEL PLATE BEAM GUARDRAIL
630101-05	GUARDRAIL MOUNTED ON EXISTING CULVERTS
630301-03	SHOULDER WIDENING FOR TYPE 1 (SPECIAL) GUARDRAIL TERMINALS
631011-02	TRAFFIC BARRIER TERMINAL, TYPE 2
631026-02	TRAFFIC BARRIER TERMINAL, TYPE 5 & 5A
631031-05	TRAFFIC BARRIER TERMINAL, TYPE 6
631032-01	TRAFFIC BARRIER TERMINAL, TYPE 6A
631033-01	TRAFFIC BARRIER TERMINAL, TYPE 6B
631036-04	TRAFFIC BARRIER TERMINAL, TYPE 8
631041-01	TRAFFIC BARRIER TERMINAL, TYPE 9
631046-02	TRAFFIC BARRIER TERMINAL, TYPE 10
631056-01	TRAFFIC BARRIER TERMINAL, TYPE 12
635001	DELINEATORS
635006-02	REFLECTOR AND TERMINAL MARKER PLACEMENT
664001-01	CHAIN LINK FENCE
665001-01	WOVEN WIRE FENCE
701001-01	OFF-ROAD OPERATIONS 2L, 2W, MORE THAN 4.5 m (15') AWAY
701006-02	OFF-ROAD OPERATIONS 2L, 2W, 4.5 m (15') TO 600 mm (24") FROM PAVEMENT EDGE
701101-01	OFF-ROAD OPERATIONS MULTILANE, 4.5 m (15') TO 600 mm (24") FROM PAVEMENT EDGE
701106-01	OFF-ROAD OPERATIONS, MULTILANE, MORE THAN 4.5 m (15') AWAY
701201-02	LANE CLOSURE, 2L, 2W, DAY ONLY, FOR SPEEDS ≥ 45 MPH
701301-02	LANE CLOSURE, 2L, 2W, SHORT TIME OPERATIONS
701400-02	APPROACH TO LANE CLOSURE, FREEWAY/EXPRESSWAY
701406-04	LANE CLOSURE, FREEWAY/EXPRESSWAY, DAY OPERATIONS ONLY
701411-03	LANE CLOSURE, MULTILANE, AT ENTRANCE OR EXIT RAMP FOR SPEEDS ≥ 45 MPH
701421-01	LANE CLOSURE, MULTILANE, DAY OPERATIONS ONLY, FOR SPEEDS ≥ 45 MPH TO 55 MPH
701426-02	LANE CLOSURE, MULTILANE INTERMITTENT OR MOVING OPERATION, FOR SPEEDS ≥ 45 MPH
701501-03	URBAN LANE CLOSURE, 2L, 2W, UNDIVIDED
701502-01	URBAN LANE CLOSURE 2L, 2W, WITH BIDIRECTIONAL LEFT TURN LANE
701601-04	URBAN LANE CLOSURE, MULTILANE, 1W OR 2W WITH NONTRAVERSABLE MEDIAN
701602-02	URBAN LANE CLOSURE, MULTILANE, 2W WITH BIDIRECTIONAL LEFT TURN LANE
701606-04	URBAN LANE CLOSURE, MULTILANE, 2W WITH MOUNTABLE MEDIAN
701701-04	URBAN LANE CLOSURE, MULTILANE INTERSECTION
701801-03	LANE CLOSURE, MULTILANE 1W OR 2W CROSSWALK OR SIDEWALK CLOSURE
702001-05	TRAFFIC CONTROL DEVICES

GENERAL NOTES

THE CONTRACTOR IS REMINDED TO CAREFULLY EXAMINE THIS CONTRACT FOR NEW OR CHANGED CONDITIONS FROM ANY PREVIOUS VERSION HE MAY HAVE EXAMINED.

THE REMOVAL OF DAMAGED GUARDRAIL AND DAMAGED POSTS SHALL NOT BE PAID FOR SEPARATELY BUT SHALL BE CONSIDERED INCLUDED IN THE COST OF THE VARIOUS REPLACEMENT PAY ITEMS.

THE TRAFFIC CONTROL REQUIRED FOR THE REPAIRS OR INSTALLATION OF GUARDRAIL OR FENCE SHALL BE CONSIDERED INCIDENTAL TO THE VARIOUS PAY ITEMS OF WORK, AND SHALL BE IN ACCORDANCE WITH THE TRAFFIC CONTROL STANDARDS INCLUDED HEREIN.

ALL HARDWARE (NUTS, BOLTS, WASHERS, STAPLES, WIRES, TIES, ETC.) REQUIRED FOR THE REPAIRS TO OR INSTALLATION OF GUARDRAIL AND FENCE SHALL BE CONSIDERED INCIDENTAL TO THE VARIOUS PAY ITEMS OF WORK IN THIS CONTRACT.

THE CONTRACTOR SHALL BE RESPONSIBLE FOR PROTECTING UTILITY PROPERTY FROM CONSTRUCTION OPERATIONS AS OUTLINED IN ARTICLE 107.31 OF THE STANDARD SPECIFICATIONS. THE J.U.L.I.E. NUMBER IS 1-800-892-0123. A MINIMUM OF FORTY-EIGHT HOURS ADVANCE NOTICE IS REQUIRED.

ANY REFERENCE TO A STANDARD IN THESE PLANS SHALL BE INTERPRETED TO MEAN THE EDITION AS INDICATED BY THE SUBNUMBER LISTED ON THE INDEX OF SHEETS OR THE COPY OF THE STANDARD INCLUDED IN THESE PLANS.

STATE OF ILLINOIS
DEPARTMENT OF TRANSPORTATION
DISTRICT THREE

PREPARED BY: Thomas R. Santolucito
DISTRICT STUDIES & PLANS ENGINEER

DATE: March 31, 2005

EXAMINED BY: Herbert K. Jay III
DISTRICT CONSTRUCTION ENGINEER

Kenneth R. Long III
DISTRICT MATERIALS ENGINEER

Bruce A. Wuehler
DISTRICT OPERATIONS ENGINEER

REVISIONS	
NAME	DATE

ILLINOIS DEPARTMENT OF TRANSPORTATION

GENERAL NOTES

SUMMARY OF QUANTITIES

P.A. NO.	SECTION	COUNTY	TOTAL SHEETS	SHEET NO.
VAR.	*	VAR.	14	3
STA.	TO STA.			
FID. AND DIST. NO.	BLKNO.	FID. AND PROJECT		
* D-3 HIGHWAY DAMAGE REPAIR 2005				
CONTRACT #66660				

CODE NO.	ITEM	CONSTRUCTION CODE TYPE:		100% MCHD	100% STATE
		UNIT	TOTAL QUANTITY	MCHD SFTY-3J	CONTR. MAINT. SFTY-3J
60600605	CONCRETE CURB, TYPE B	FOOT	30	30	
63100045	TRAFFIC BARRIER TERMINAL, TYPE 2	EACH	2	2	
63100070	TRAFFIC BARRIER TERMINAL, TYPE 5	EACH	1	1	
63100085	TRAFFIC BARRIER TERMINAL, TYPE 6	EACH	1	1	
63100087	TRAFFIC BARRIER TERMINAL, TYPE 6A	EACH	1	1	
63100089	TRAFFIC BARRIER TERMINAL, TYPE 6B	EACH	1	1	
63100095	TRAFFIC BARRIER TERMINAL, TYPE 8	EACH	1	1	
63100101	TRAFFIC BARRIER TERMINAL, TYPE 9	EACH	1	1	
63100105	TRAFFIC BARRIER TERMINAL, TYPE 10	EACH	1	1	
63100115	TRAFFIC BARRIER TERMINAL, TYPE 12	EACH	1	1	
63100167	TRAFFIC BARRIER TERMINAL TYPE 1, SPECIAL (TANGENT)	EACH	45	40	5
63100169	TRAFFIC BARRIER TERMINAL TYPE 1, SPECIAL (FLARED)	EACH	3	2	1
63200305	STEEL PLATE BEAM GUARDRAIL REMOVAL	FOOT	650	500	150
63301000	REMOVE AND RE-ERECT STEEL PLATE BEAM GUARDRAIL	FOOT	50		50
63400105	GUARD POSTS	EACH	100	50	50
66400105	CHAIN LINK FENCE, 4'	FOOT	300	150	150
66400305	CHAIN LINK FENCE, 6'	FOOT	350	200	150
66500105	WOVEN WIRE FENCE, 4'	FOOT	9800	8550	1250
67100100	MOBILIZATION	L SUM	1	0.5	0.5
78200405	GUARDRAIL MARKERS	EACH	102	90	12
78201000	TERMINAL MARKER - DIRECT APPLIED	EACH	60	50	10
X0300159	EMERGENCY WORK CALL OUT	EACH	115	90	25
X0300160	PULL POST ARRANGEMENT	EACH	22	20	2
X0300161	CONCRETE STRUCTURE REPAIR	CU FT	15	15	
X0321563	REPAIR TRAFFIC BARRIER TERMINAL TYPE 1 SPECIAL	EACH	35	25	10
X0639500	CHAIN LINK FENCE POST	EACH	21	15	6

REVISIONS	
NAME	DATE

ILLINOIS DEPARTMENT OF TRANSPORTATION

SUMMARY OF QUANTITIES

3/31/2005 c:\p\projects\ed0605\ed060115.dgn

SUMMARY OF QUANTITIES

CODE NO.	ITEM	CONSTRUCTION CODE TYPE:		100% MCHD	100% STATE
		UNIT	TOTAL QUANTITY	MCHD SFTY-3J	CONTR. MAINT. SFTY-3J
X6310166	TRAFFIC BARRIER TERMINAL, TYPE 1 (SPECIAL), EXTRUDER	EACH	11	10	1
X6310167	TRAFFIC BARRIER TERMINAL, TYPE 1 (SPECIAL), WOOD POST	EACH	50	30	20
X6310168	TRAFFIC BARRIER TERMINAL, TYPE 1 (SPECIAL), STEEL TUBE	EACH	14	10	4
Z0025550	FURNISHING AND INSTALLING RAIL ELEMENT PLATES	FOOT	7550	6550	1000
Z0026260	FURNISHING AND INSTALLING TUBULAR THRIE BEAM	FOOT	550	500	50
Z0026700	FURNISHING AND SETTING STEEL POSTS	EACH	600	500	100
Z0026800	FURNISHING AND SETTING STEEL POSTS (MODIFIED)	EACH	5	5	
Z0026900	FURNISHING AND SETTING STEEL POSTS (SPECIAL)	EACH	50		50
*Z0030380	IMPACT ATTENUATORS (FULLY REDIRECTIVE, NARROW), TEST LEVEL 3, STATE FURNISHED	EACH	2	2	
*Z0030385	REPAIR IMPACT ATTENUATORS (FULLY REDIRECTIVE, NARROW), TEST LEVEL 3, STATE FURNISHED	EACH	1	1	
*Z0030390	IMPACT ATTENUATORS, REPLACEMENT (NON-REDIRECTIVE), TEST LEVEL 3	EACH	195	175	20
Z0052400	REPAIR TRAFFIC BARRIER TERMINAL, TYPE 1	EACH	4	2	2
Z0052600	REPAIR TRAFFIC BARRIER TERMINAL, TYPE 2	EACH	1	1	
Z0052800	REPAIR TRAFFIC BARRIER TERMINAL, TYPE 3A	EACH	1	1	
Z0052900	REPAIR TRAFFIC BARRIER TERMINAL, TYPE 4	EACH	2	2	
Z0053000	REPAIR TRAFFIC BARRIER TERMINAL, TYPE 5	EACH	1	1	
Z0053200	REPAIR TRAFFIC BARRIER TERMINAL, TYPE 6	EACH	2	2	
Z0053210	REPAIR TRAFFIC BARRIER TERMINAL, TYPE 6A	EACH	2	2	
Z0053220	REPAIR TRAFFIC BARRIER TERMINAL, TYPE 6B	EACH	2	2	
Z0053400	REPAIR TRAFFIC BARRIER TERMINAL, TYPE 8	EACH	1	1	
Z0053500	REPAIR TRAFFIC BARRIER TERMINAL, TYPE 9	EACH	1	1	
Z0053575	REPAIR TRAFFIC BARRIER TERMINAL, TYPE 12	EACH	1	1	

* SFTY - 3N

F. A. NO.	SECTION	COUNTY	TOTAL SHEETS	SHEET NO.
VAR.	*	VAR.	14	4
STA.	TO STA.			
FED. ROAD DIST. NO.	RAMPS	FED. RD PROJECT		
* D-3 HIGHWAY DAMAGE REPAIR 2005 CONTRACT #66660				

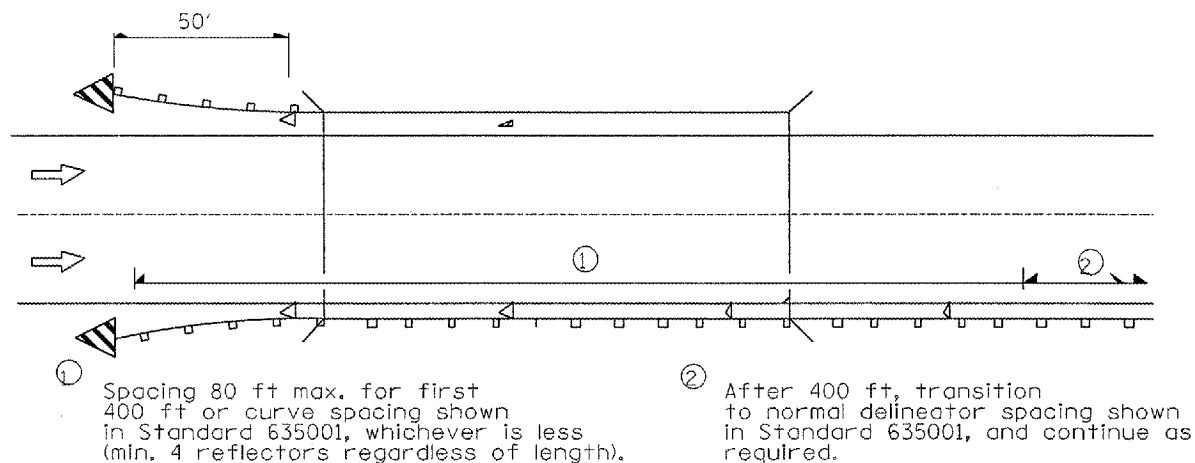
REVISIONS	
NAME	DATE

ILLINOIS DEPARTMENT OF TRANSPORTATION
SUMMARY OF QUANTITIES

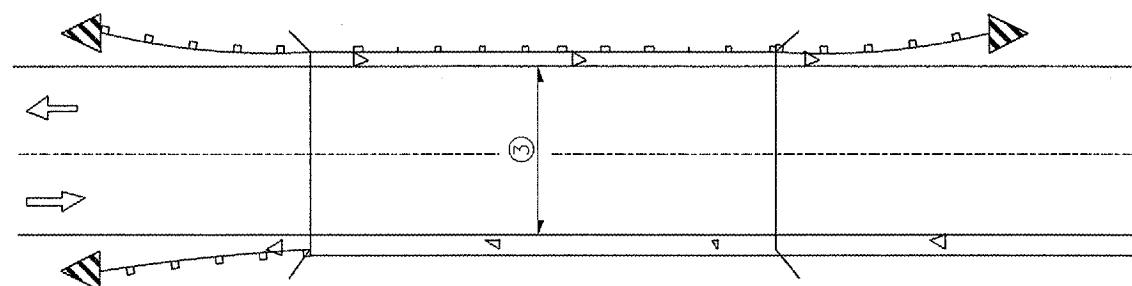
3/31/2005 c:\pro\lects\ed0605\deral\ls.dgn

F. A. SHE.	SECTION	COUNTY	TOTAL SHEETS	SHEET NO.
VAR.	*	VAR.	14	5
STA.	TO STA.			
FED. ROAD DIST. NO.	ILLINOIS	FED. AID PROJECT		

* D-3 HIGHWAY DAMAGE REPAIR 2005
CONTRACT #66660

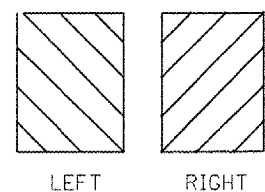
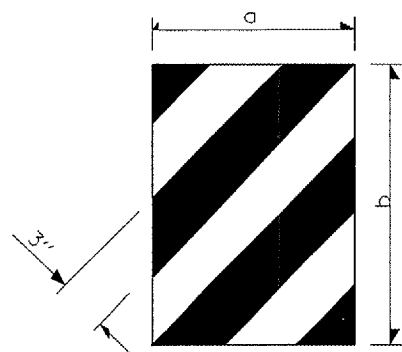


ONE-WAY TRAFFIC



TWO-WAY TRAFFIC

- ◁ Monodirectional silver
- ◀ Monodirectional amber
- ▴ Terminal Marker - Black/Yellow Left or Right as appropriate



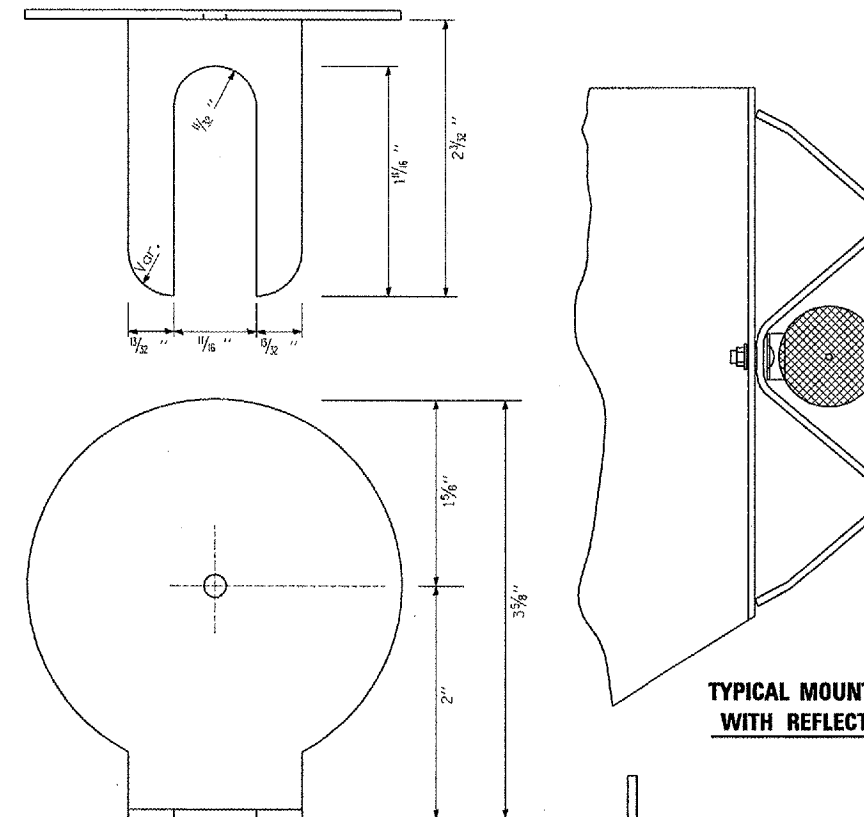
DIMENSION	CASE I	CASE II
a	*	450 (18)
b	*	406 (16)

* The width and height (a, b) of the terminal marker shall be within approximately 25 mm (1 inch) of the outer edge of the terminal end, with a minimum reflective area of 0.18 m² (288 sq. in.)

TERMINAL MARKER DETAILS

Color: Black / Yellow reflectorized

REFLECTOR AND TERMINAL MARKER PLACEMENT

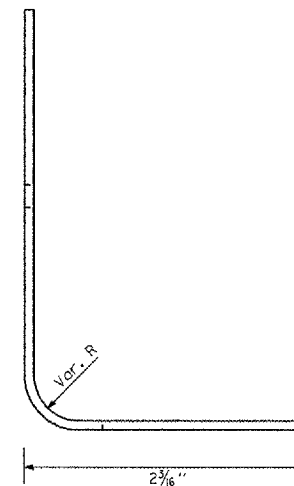


TYPICAL MOUNTING WITH REFLECTOR

REFLECTOR MARKER TYPE A

NOTES:

- BRACKET IS TO BE FABRICATED FROM 12 GA. (MIN) STEEL GALVANIZED IN ACCORDANCE WITH AASHTO M III.
- MIN. 3 REFLECTORS PER SIDE.
- BRACKET "FOOT" SHALL BE PLACED BETWEEN THE BOLT HEAD AND THE PLATE WASHER (IF PRESENT).
- BRACKETS SHALL NOT BE PLACED WITHIN 25 FT OF THE END OF A BREAKAWAY CABLE TERMINAL (BCT) SECTION OR WITHIN AN EXPANSION SPLICE
- ON THRIE BEAM RAIL, THE BRACKETS SHALL BE ATTACHED TO THE UPPER SPLICE BOLTS.
- USE CRYSTAL COLOR, BI-DIRECTIONAL REFLECTORS USE AMBER (LEFT) AND CRYSTAL (RIGHT), MONODIRECTIONAL REFLECTORS ON INTERSTATES
- ALL DIMENSIONS SHOWN ARE MINIMUM



REFLECTOR DETAIL

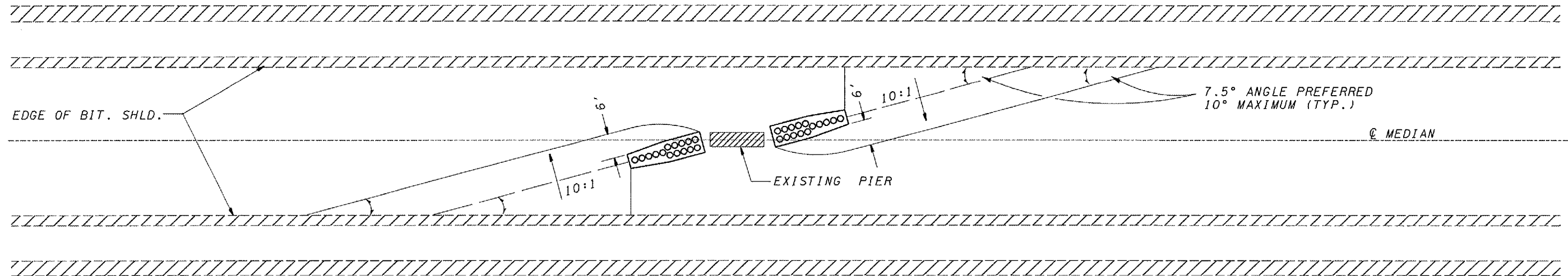
REVISIONS	
NAME	DATE

ILLINOIS DEPARTMENT OF TRANSPORTATION

DETAILS

T. & E. NO.	SECTION	COUNTY	TOTAL SHEETS	SHEET NO.
VAR.	*	VAR.	14	6
STA.		TO STA.		
FED. ROAD DIST. NO.	ILLINOIS	FED. AID PROJECT		

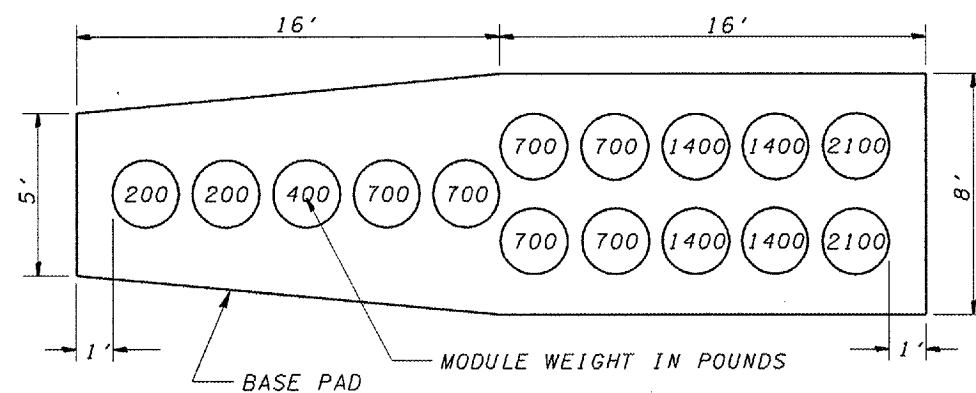
D-3 HIGHWAY DAMAGE REPAIR 2005
CONTRACT #66660



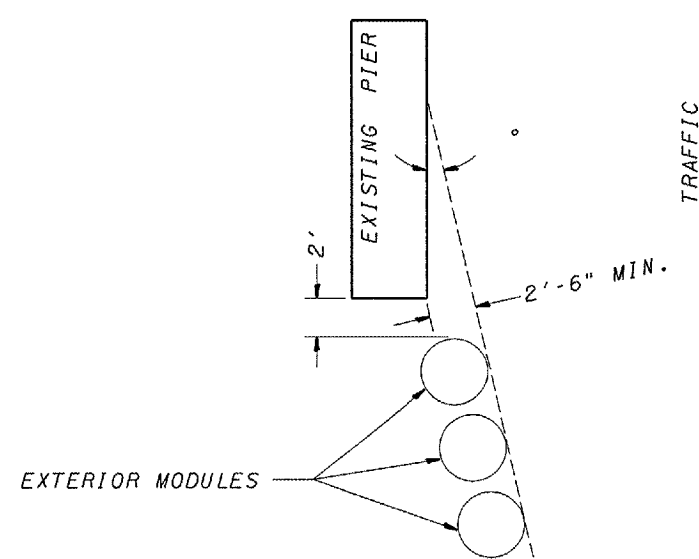
**IMPACT ATTENUATOR LAYOUT AND GRADING PLAN
FOR INFORMATION ONLY**

NOTES:

1. THE PAY ITEM "IMPACT ATTENUATORS, REPLACEMENT (NON-REDIRECTIVE), TEST LEVEL 3" HAS BEEN INCLUDED TO REPLACE INDIVIDUAL DAMAGED SAND MODULES.
2. REPLACEMENT MODULES SHALL MATCH THE KIND OF MODULES THAT ARE REMAINING.
3. IMPACT ATTENUATORS SHALL BE IN ACCORDANCE WITH THE BDE SPECIAL PROVISION FOR IMPACT ATTENUATORS, EFFECTIVE: NOVEMBER 1, 2003.
4. THIS SHEET SHOWS THE LAYOUT INFORMATION FOR REPLACEMENT OF SAND MODULES (IMPACT ATTENUATORS) AT A TYPICAL INTERSTATE LOCATION.
5. ADJACENT SAND MODULE IMPACT ATTENUATORS THAT ARE NOT DAMAGED, BUT HAVE BEEN SHIFTED LATERALLY FROM THEIR ORIGINAL POSITION SHALL BE REALIGNED OR MOVED BACK TO THEIR ORIGINAL POSITION, AS DIRECTED BY THE ENGINEER. REALIGNMENT OR MOVING OF ADJACENT UNDAMAGED MODULES SHALL NOT BE PAID FOR SEPARATELY BUT SHALL BE CONSIDERED INCLUDED IN THE COST OF REPLACEMENT. THE WORK TO REALIGN OR SHIFT UP TO 2 MODULES SHALL BE INCLUDED WITH EACH REPLACED SAND MODULE IMPACT ATTENUATOR.



**LAYOUT FOR IMPACT ATTENUATOR
(NON-REDIRECTIVE), TEST LEVEL 3
FOR INFORMATION ONLY**



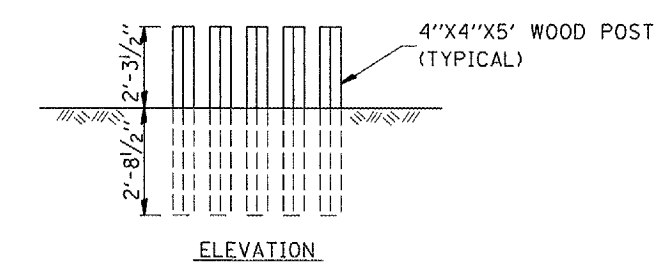
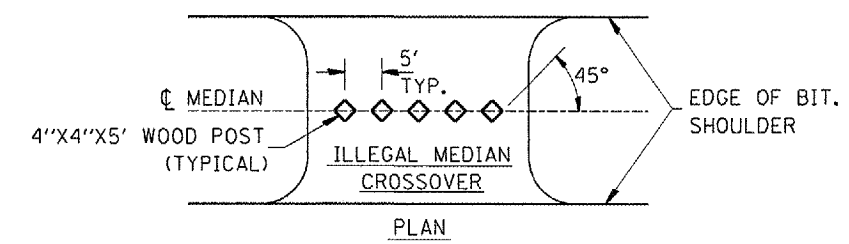
**EXTERIOR MODULE LAYOUT
FOR INFORMATION ONLY**

REVISIONS	
NAME	DATE

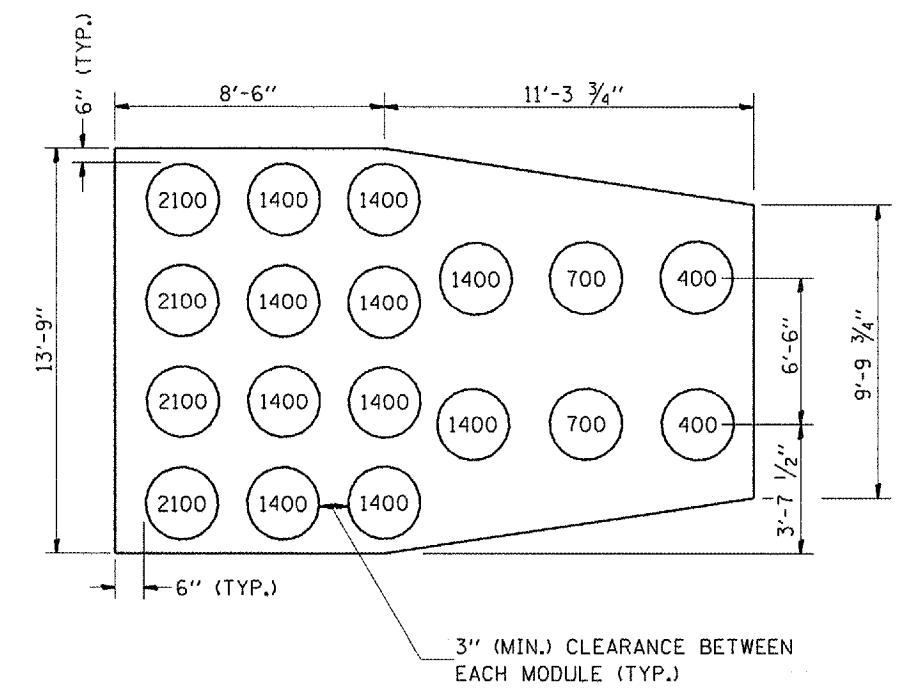
ILLINOIS DEPARTMENT OF TRANSPORTATION
**IMPACT ATTENUATOR
INSTALLATION
DETAIL**

F.A. SHE.	SECTION	COUNTY	TOTAL SHEETS	SHEET NO.
VAR.	*	VAR.	14	7
STA.		TO STA.		
FED. ROAD DIST. NO.	ILLINOIS	FED. AID PROJECT		

* D-3 HIGHWAY DAMAGE REPAIR 2005
CONTRACT #66660



GUARD POST DETAIL



IMPACT ATTENUATOR (NON-REDIRECTIVE) DETAIL

REVISIONS	
NAME	DATE

ILLINOIS DEPARTMENT OF TRANSPORTATION

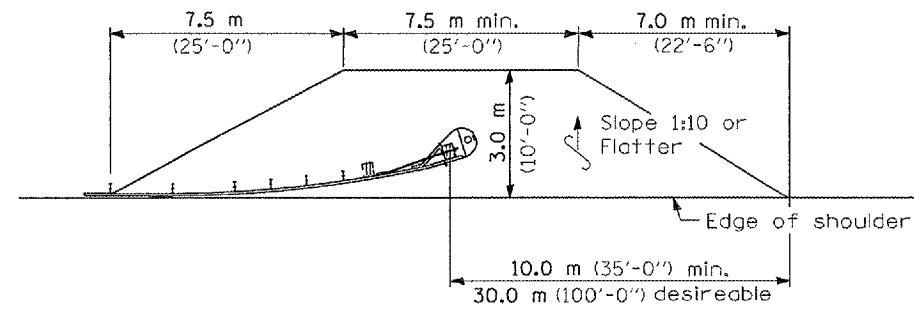
IMPACT ATTENUATOR (NON-REDIRECTIVE) DETAIL

3/31/2005 c:\pro\lects\ed00605\deto11s.dgn

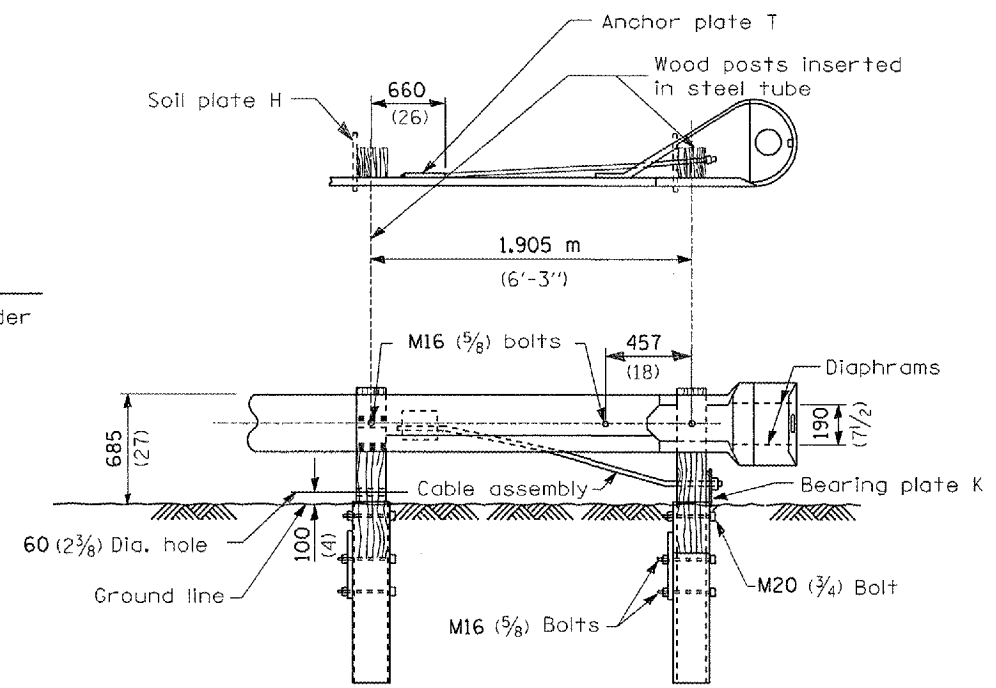
F.A. No.	SECTION	COUNTY	TOTAL SHEETS	SHEET NO.
VAR.	*	VAR.	14	8
STA.	TO STA.			
FED. ROAD DIST. NO.	ILLINOIS	FED. AID PROJECT		

* D-3 HIGHWAY DAMAGE REPAIR 2005
CONTRACT #66660

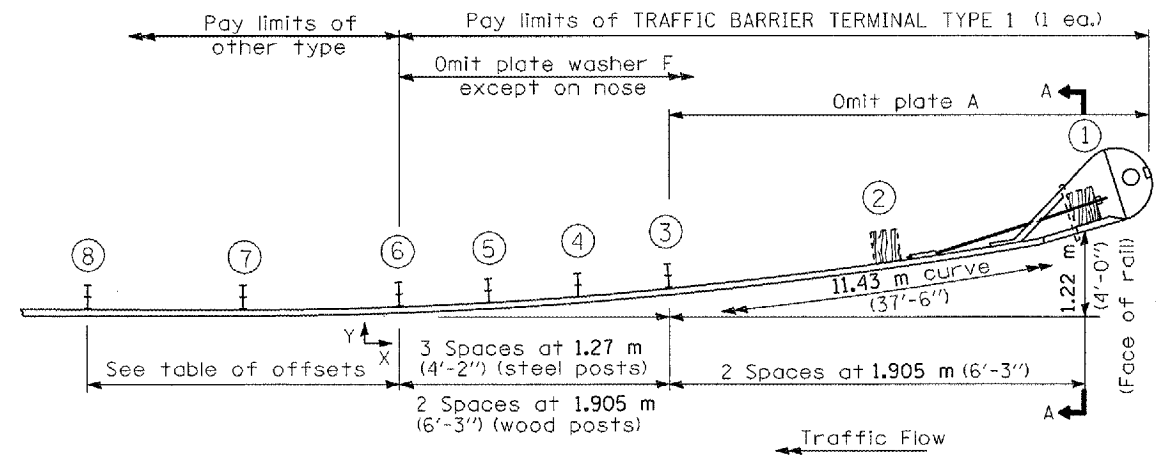
Post	X ^m (ft)	Y ^m (ft)
①	11.345 (37.22)	1.22 (4.0)
②	9.475 (31.09)	0.850 (2.79)
③	7.595 (24.92)	0.545 (1.79)
④	6.335 (20.79)	0.380 (1.25)
⑤	5.070 (16.64)	0.245 (0.80)
⑥	3.805 (12.49)	0.135 (0.45)
⑦	1.905 (6.25)	0.035 (0.11)
⑧	0 (0.00)	0 (0.00)



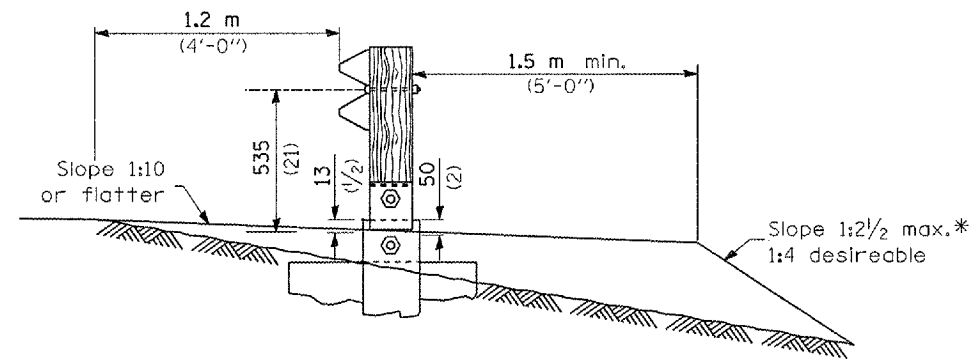
SHOULDER WIDENING TRANSITION



WOOD BREAKAWAY POSTS
TUBULAR STEEL FOUNDATIONS



PLAN



SECTION A-A

* If fill height exceeds 1.5 m (5'-0") use 1:3 max.

**DETAIL INCLUDED
FOR REPAIR ONLY**

GENERAL NOTES

See Standard 630001 for details of guardrail not shown.

Posts at location 1 & 2 shall be wood breakaway posts. Posts other than 1 & 2 may be either standard wood posts or steel posts, at the option of the Contractor. If standard wood posts are used, one post shall be located midway between and in lieu of posts 4 & 5. The offset (Y) for this post shall be 300 mm (12 inches).

A two-piece assembly may be substituted for the one piece nose shown above.

The bearing plate K shall be held in position by (2) two eightpenny nails driven into the post and bent over the top of the plate.

All slope ratios are expressed as units of vertical displacement to units of horizontal displacement (V:H).

All dimensions are in millimeters (inches) unless otherwise shown.

REVISIONS	
NAME	DATE

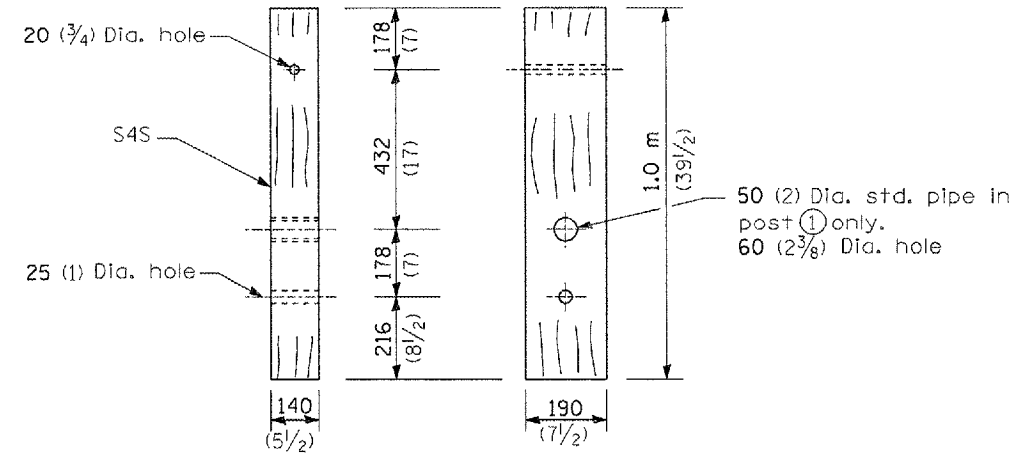
ILLINOIS DEPARTMENT OF TRANSPORTATION

**TRAFFIC BARRIER
TERMINAL TYPE 1**
STANDARD B.L.R. 23

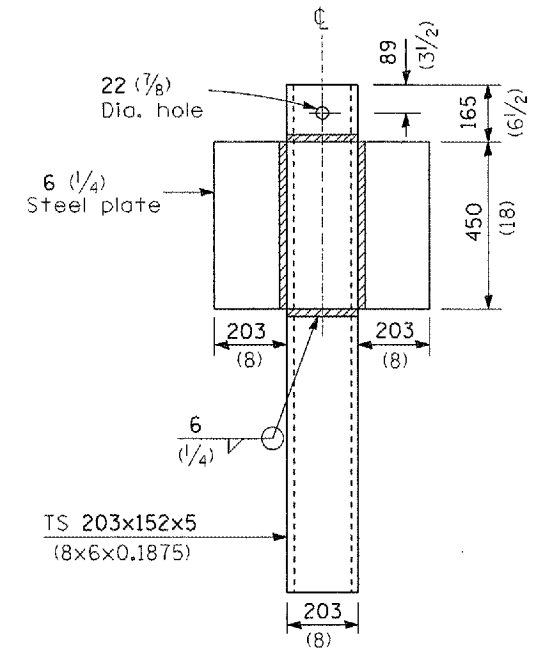
3/31/2005 c:\pro\ecfs\ved00605\det.d\l1s.dgn

F.A. RFL.	SECTION	COUNTY	TOTAL SHEETS	SHEET NO.
VAR.	*	VAR.	14	9
STA.	TO STA.			
FED. ROAD DIST. NO.	ILLINOIS	FED. AID PROJECT		

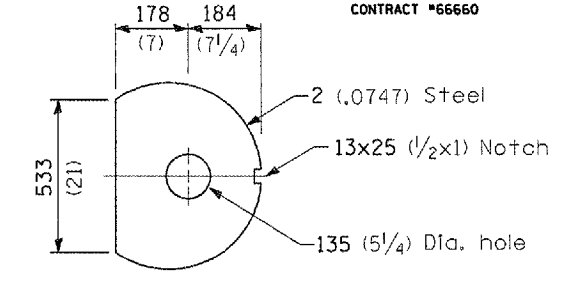
D-3 HIGHWAY DAMAGE REPAIR 2005
CONTRACT #66660



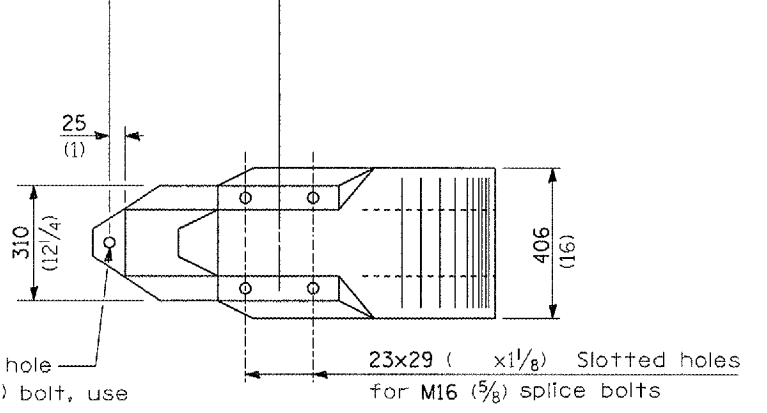
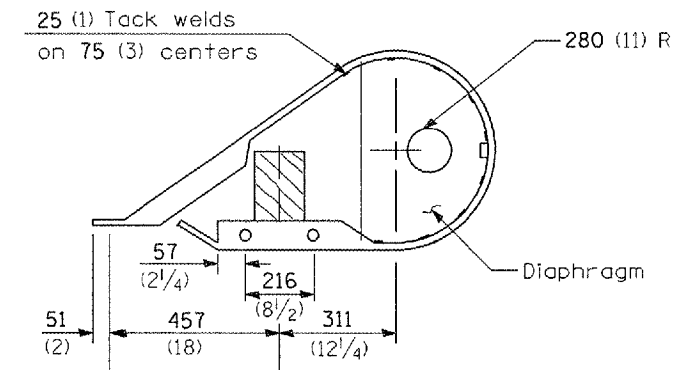
WOOD BREAKAWAY POST
(2 ea.)



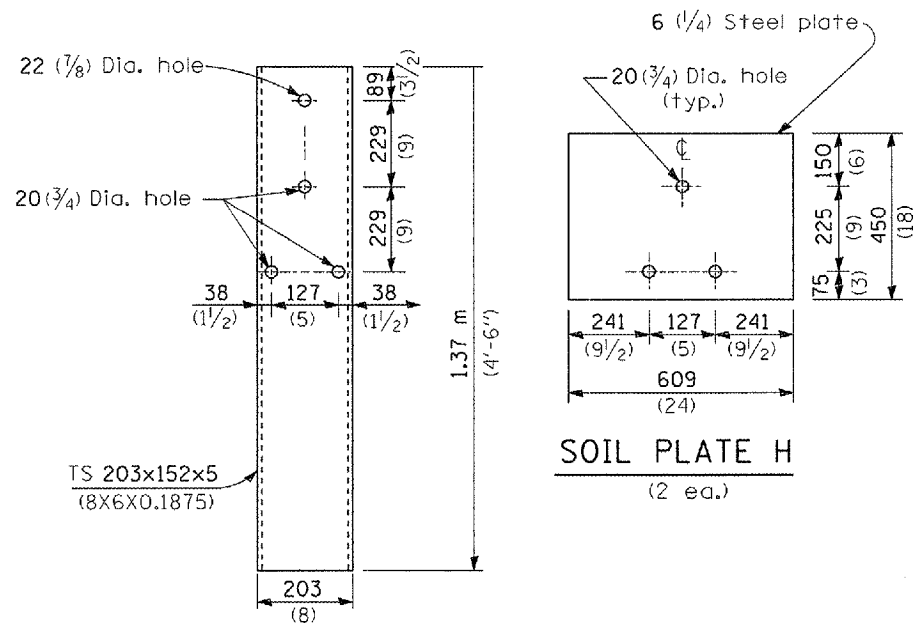
ALTERNATE SOIL PLATE CONNECTION



DIAPHRAGM
(2 ea.)

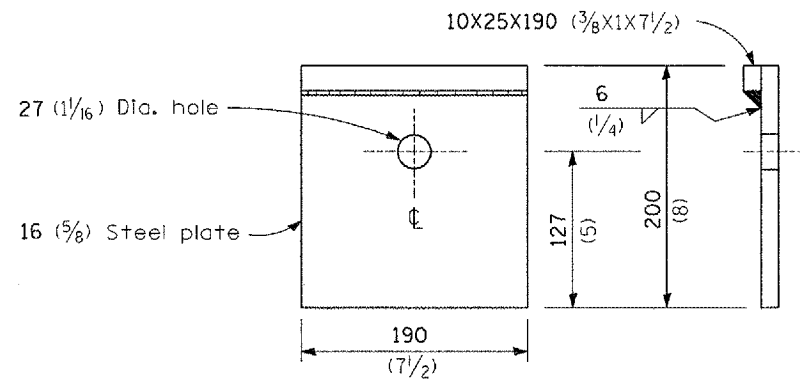


NOSE
(1 ea.)



STEEL TUBE
(2 ea.)

SOIL PLATE H
(2 ea.)



BEARING PLATE K
(1 ea.)

All dimensions are in millimeters (inches) unless otherwise shown.

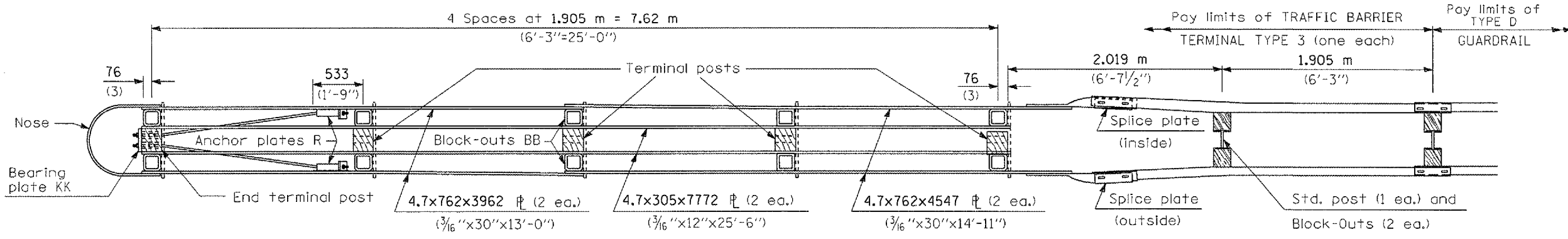
DETAIL INCLUDED FOR REPAIR ONLY

REVISIONS	
NAME	DATE

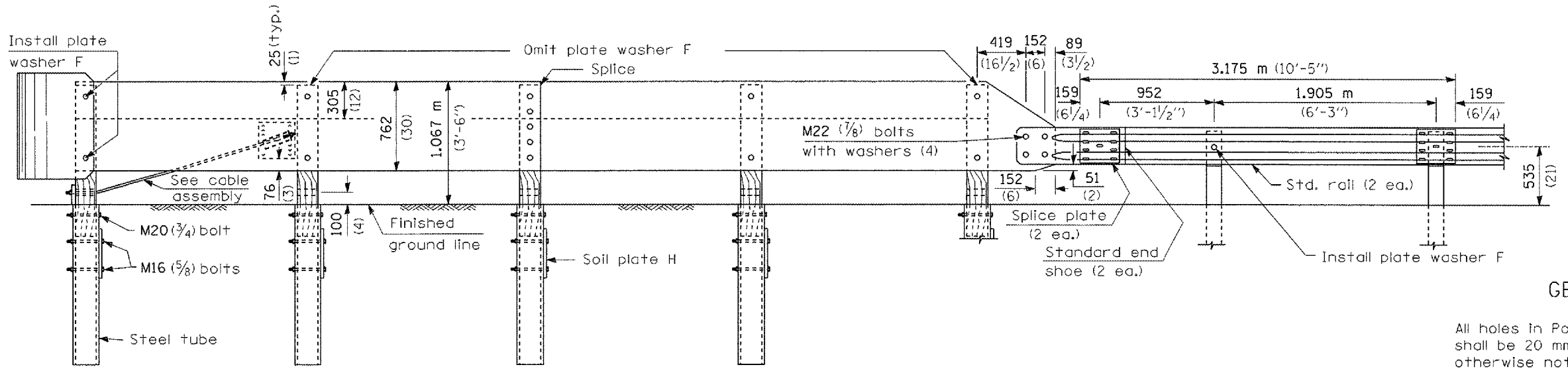
ILLINOIS DEPARTMENT OF TRANSPORTATION
TRAFFIC BARRIER TERMINAL TYPE 1
STANDARD B.L.R. 23

3/31/2005 c:\pco\lects\ed00605\defa11.s.dgn

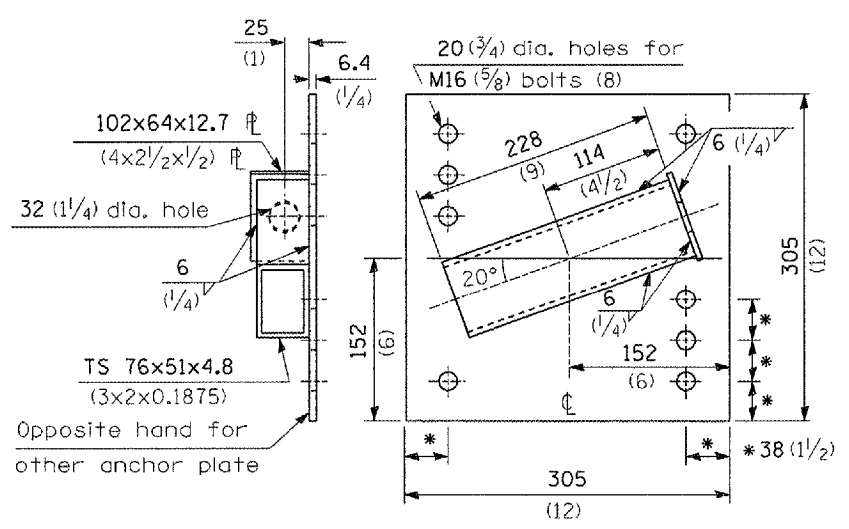
F.A. FILE	SECTION	COUNTY	TOTAL SHEETS	SHEET NO.
VAR.	•	VAR.	14	10
STA.		TO STA.		
FED. ROAD DIST. NO.	ILLINOIS	FED. AID PROJECT		
• D-3 HIGHWAY DAMAGE REPAIR 2005				
CONTRACT #66660				



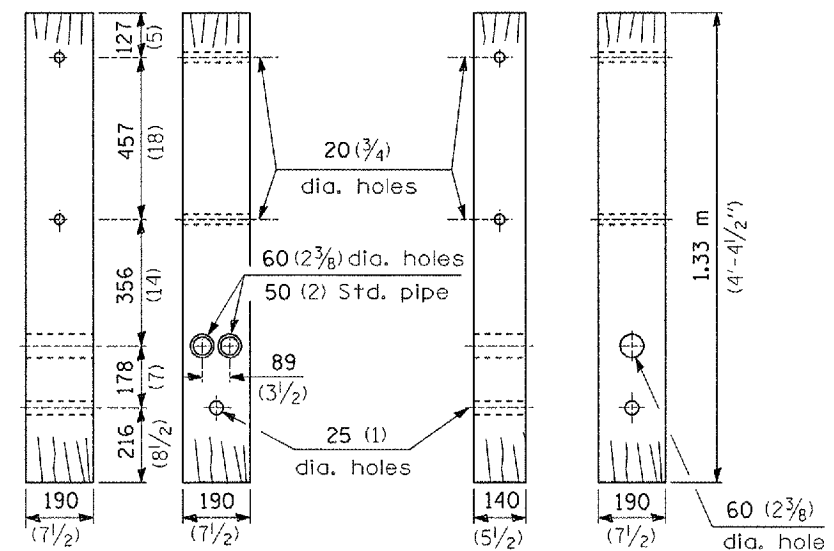
PLAN - TRAFFIC BARRIER TERMINAL TYPE 3



ELEVATION

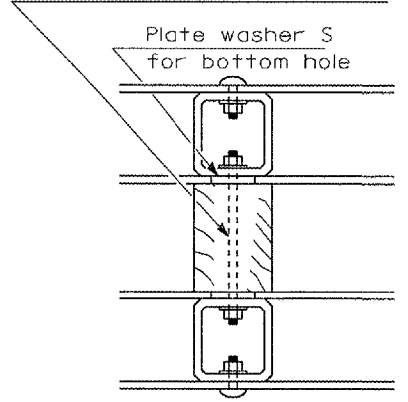


ANCHOR PLATE R
(1 ea. lt. hd. & 1 ea. rt. hd.)



END TERMINAL POST (1 ea.)
TERMINAL POST (4 ea. Type 3) (5 ea. Type 3A)

M16 (5/8) x 280 (11) threaded rod with nuts and washers (10 ea. Type 3) (12 ea. Type 3A)



TYPICAL BLOCK-OUT/POST ATTACHMENT

GENERAL NOTES

- All holes in Posts, Block-Outs and Plates shall be 20 mm (3/4") diameter unless otherwise noted.
- See Standard 630001 for details of guardrail elements not shown.
- Unless otherwise shown all bolts and nuts shall be Standard Post and Splice Bolts and Nuts (See Standard 630001).
- Block-Out AA shall be used at all locations unless otherwise noted.

DETAIL INCLUDED FOR REPAIR ONLY

All dimensions are in millimeters (inches) unless otherwise shown.

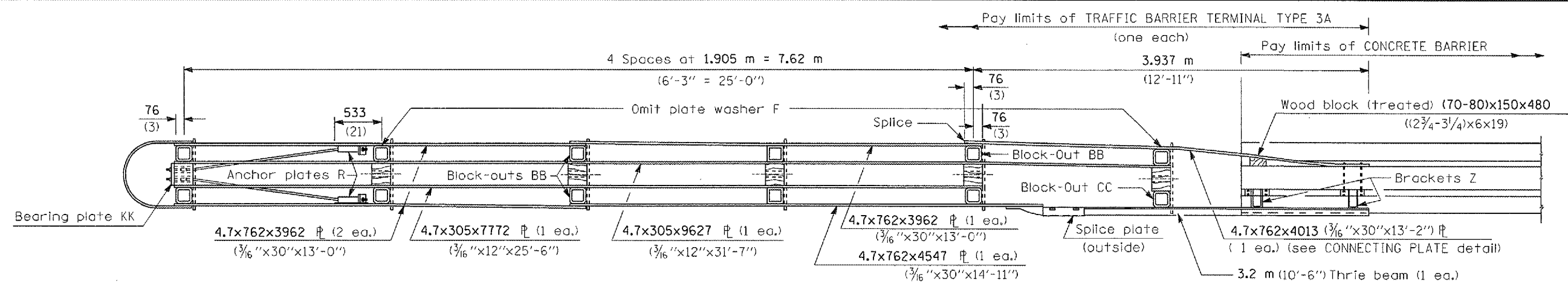
REVISIONS	
NAME	DATE

ILLINOIS DEPARTMENT OF TRANSPORTATION
TRAFFIC BARRIER TERMINAL TYPE 3 & 3A

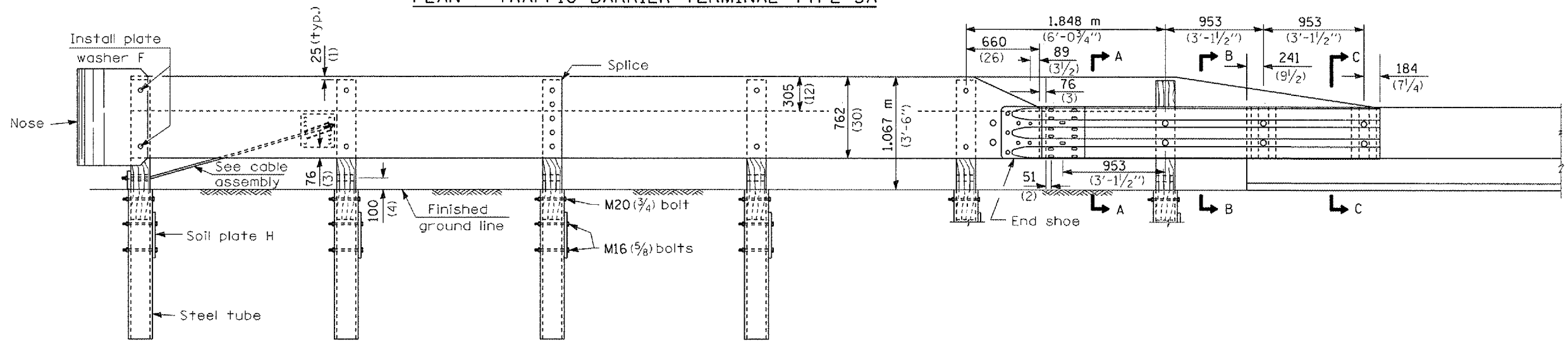
3/31/2005 c:\pro\lects\ed0605\det011.s.dgn

F. & A. REF.	SECTION	COUNTY	TOTAL SHEETS	SHEET NO.
VAR.	#	VAR.	14	11
STA.	TO STA.			
FED. ROAD DIST. NO.	ILLINOIS	FED. AID PROJECT		

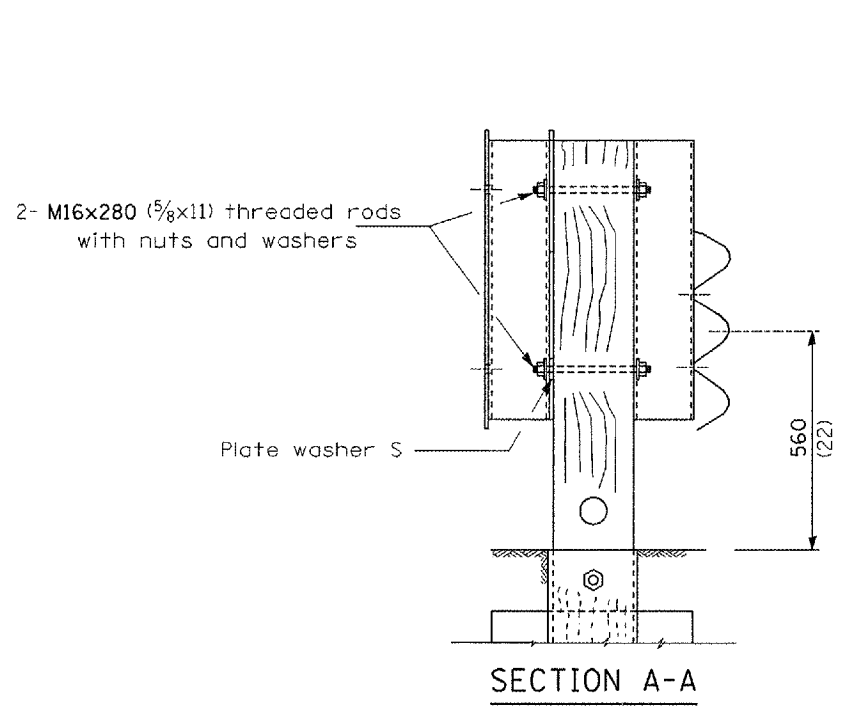
D-3 HIGHWAY DAMAGE REPAIR 2005
CONTRACT #6660



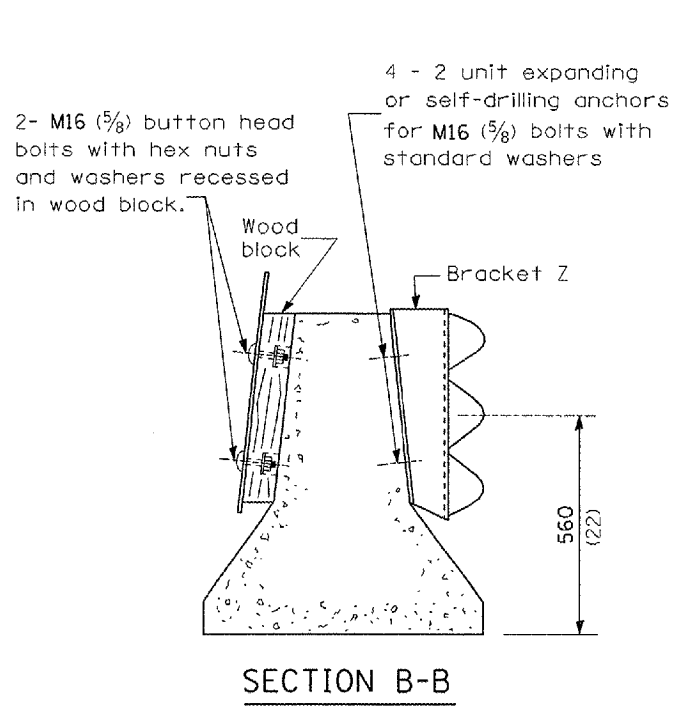
PLAN - TRAFFIC BARRIER TERMINAL TYPE 3A



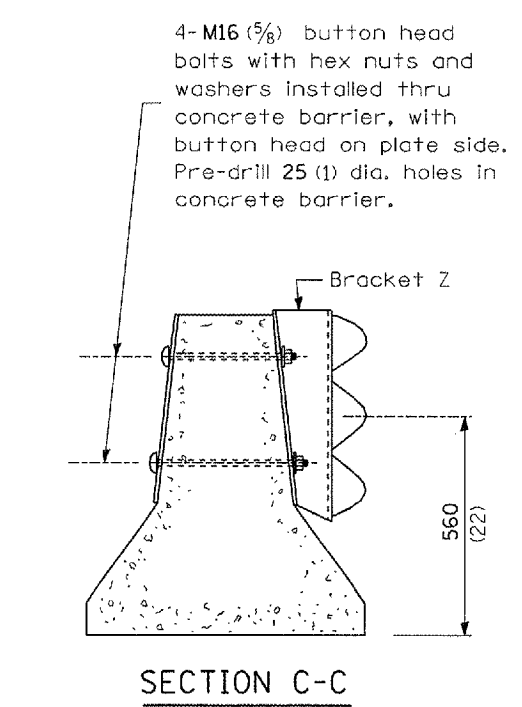
ELEVATION



SECTION A-A



SECTION B-B



SECTION C-C

DETAIL INCLUDED FOR REPAIR ONLY

All dimensions are in millimeters (inches) unless otherwise shown.

ILLINOIS DEPARTMENT OF TRANSPORTATION

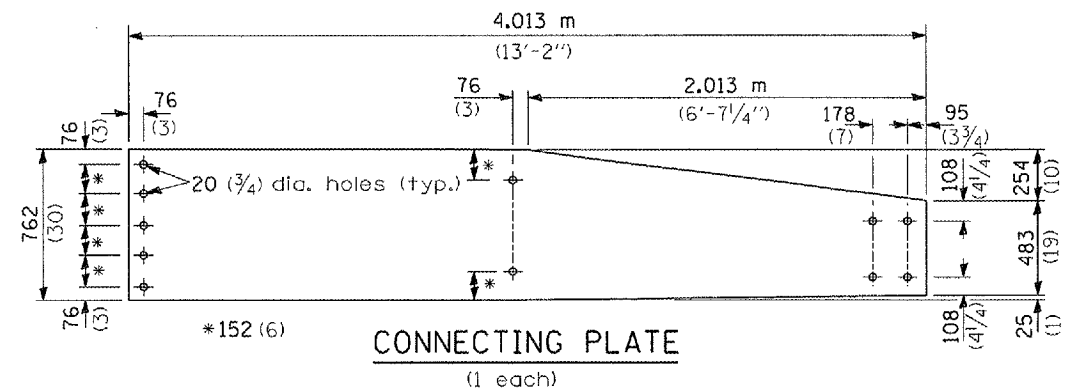
TRAFFIC BARRIER TERMINAL TYPE 3 & 3A

REVISIONS	
NAME	DATE

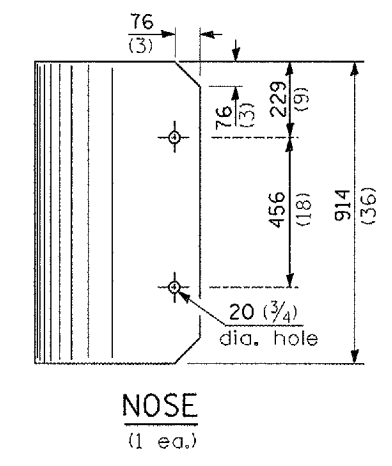
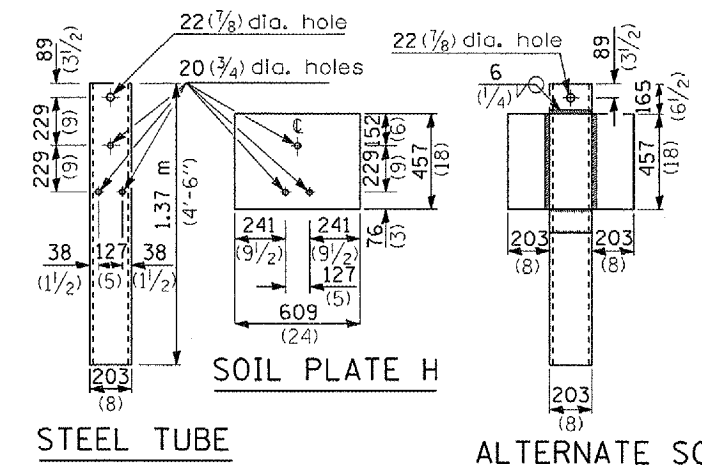
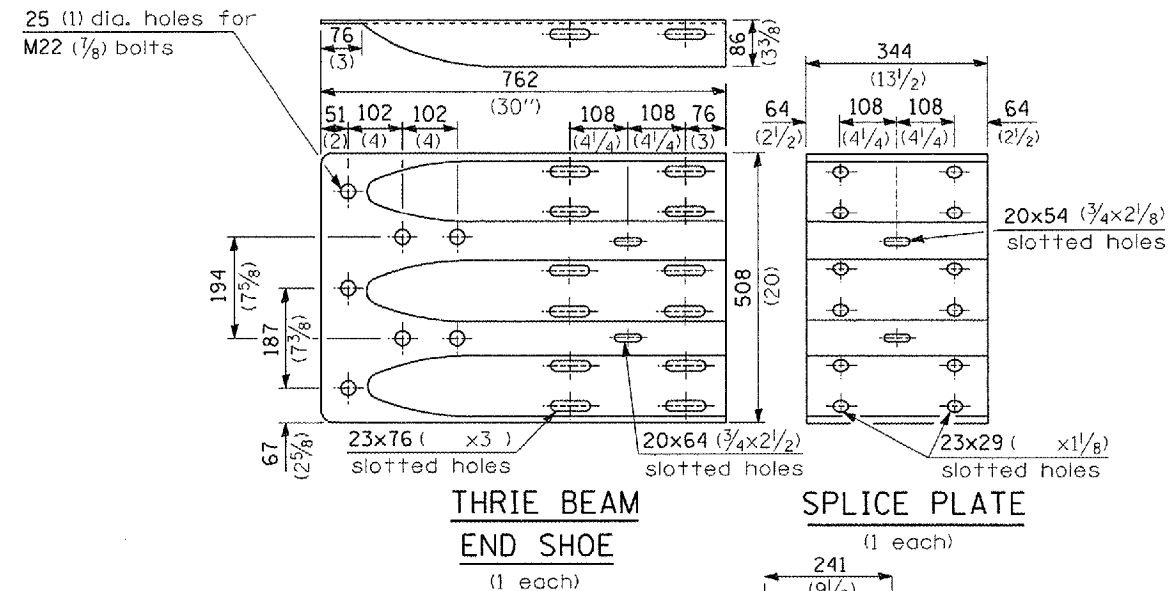
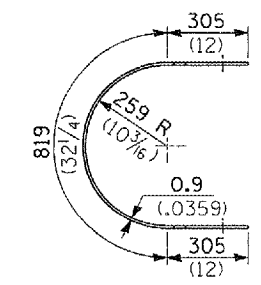
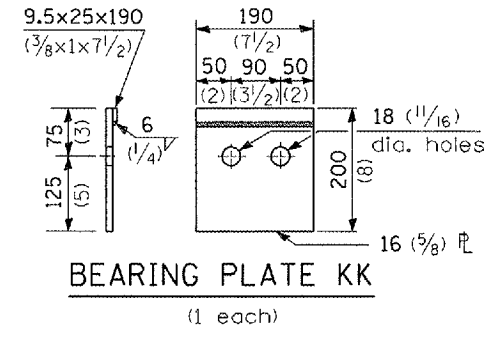
3/31/2005 c:\pro\sects\ec00605\ver011.s.dgn

F. A. REF.	SECTION	COUNTY	TOTAL SHEETS	SHEET NO.
VAR.	*	VAR.	14	12
STA.		TO STA.		
FED. ROAD DIST. NO.		ILLINOIS		FED. AID PROJECT
* D-3 HIGHWAY DAMAGE REPAIR 2005				
CONTRACT #66660				

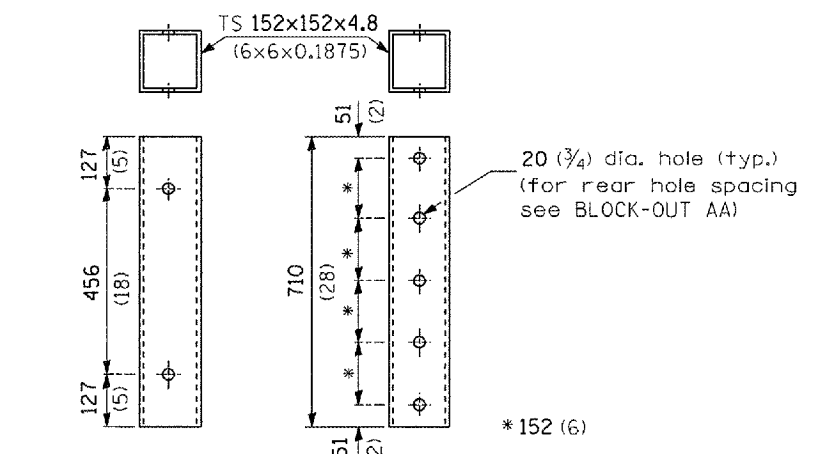
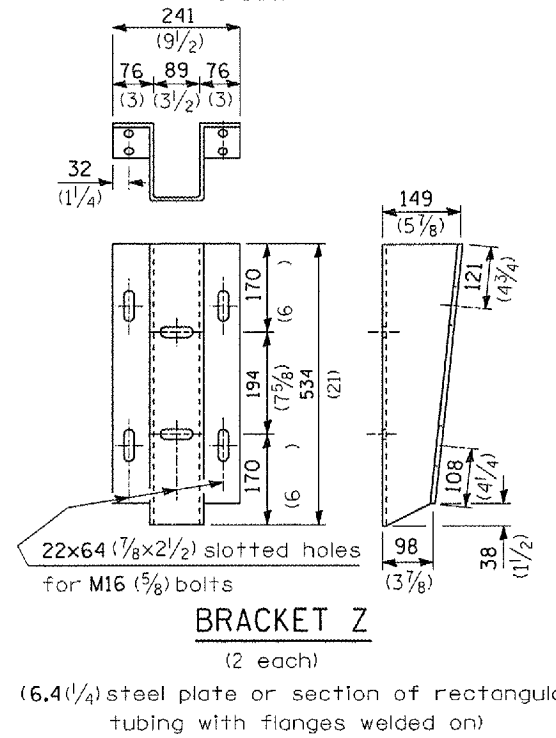
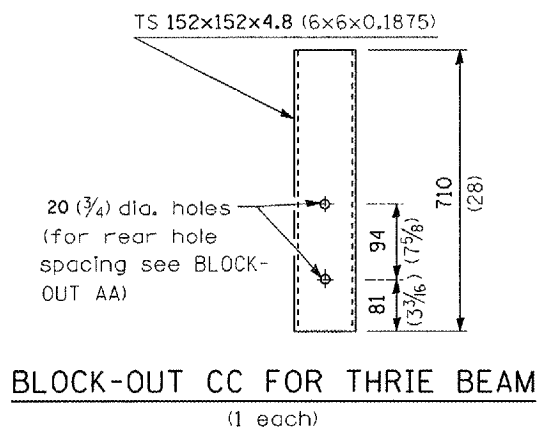
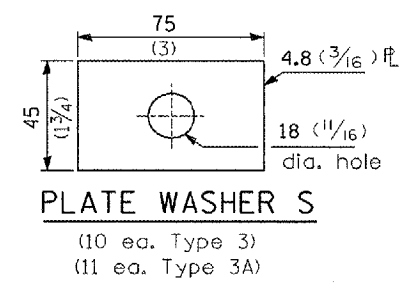
TYPE 3A ONLY



TYPE 3 & 3A



STEEL TUBE
TS 203x203x4.8 (8x8x0.1875) (end terminal post) (1 ea.)
TS 203x152x4.8 (8x6x0.1875) (terminal post) (4 ea. Type 3) (5 ea. Type 3A)



DETAIL INCLUDED FOR REPAIR ONLY

All dimensions are in millimeters (inches) unless otherwise shown.

REVISIONS	
NAME	DATE

ILLINOIS DEPARTMENT OF TRANSPORTATION
TRAFFIC BARRIER TERMINAL TYPE 3 & 3A

3/31/2005 c:\pro\lects\ed00605\deral.is.dgn

OFFSETS TO FACE OF RAIL

POST	DISTANCE X (m) (ft.)	OFFSET Y (m) (ft.)
POINT 0	0 (0)	0 (0)
(4)	7.60 (24.93)	0.56 (1.83)
(8)	15.14 (49.68)	1.60 (5.28)
(12)	22.60 (74.16)	3.16 (10.37)
(16)	29.94 (98.23)	5.20 (17.05)
(20)	37.13 (121.83)	7.71 (25.3)
(24)	44.14 (144.83)	10.70 (35.09)

Offsets (Y) are measured between the face of rail and the offset baseline, which is parallel to the pavement edge and passes through point 0.

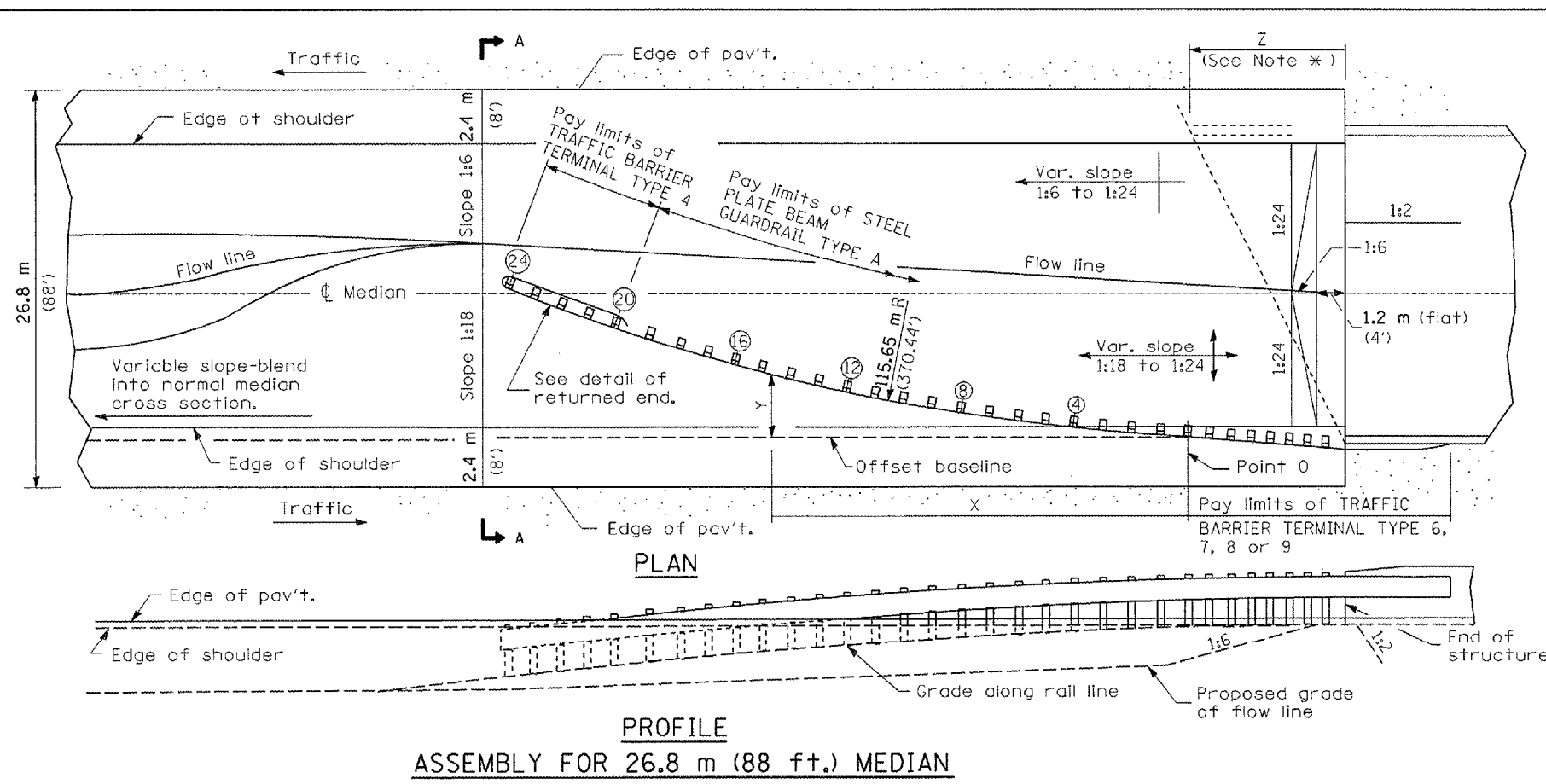
The location of point 0 will vary, being dependent on structure details and the type of traffic barrier terminal utilized.

GENERAL NOTES

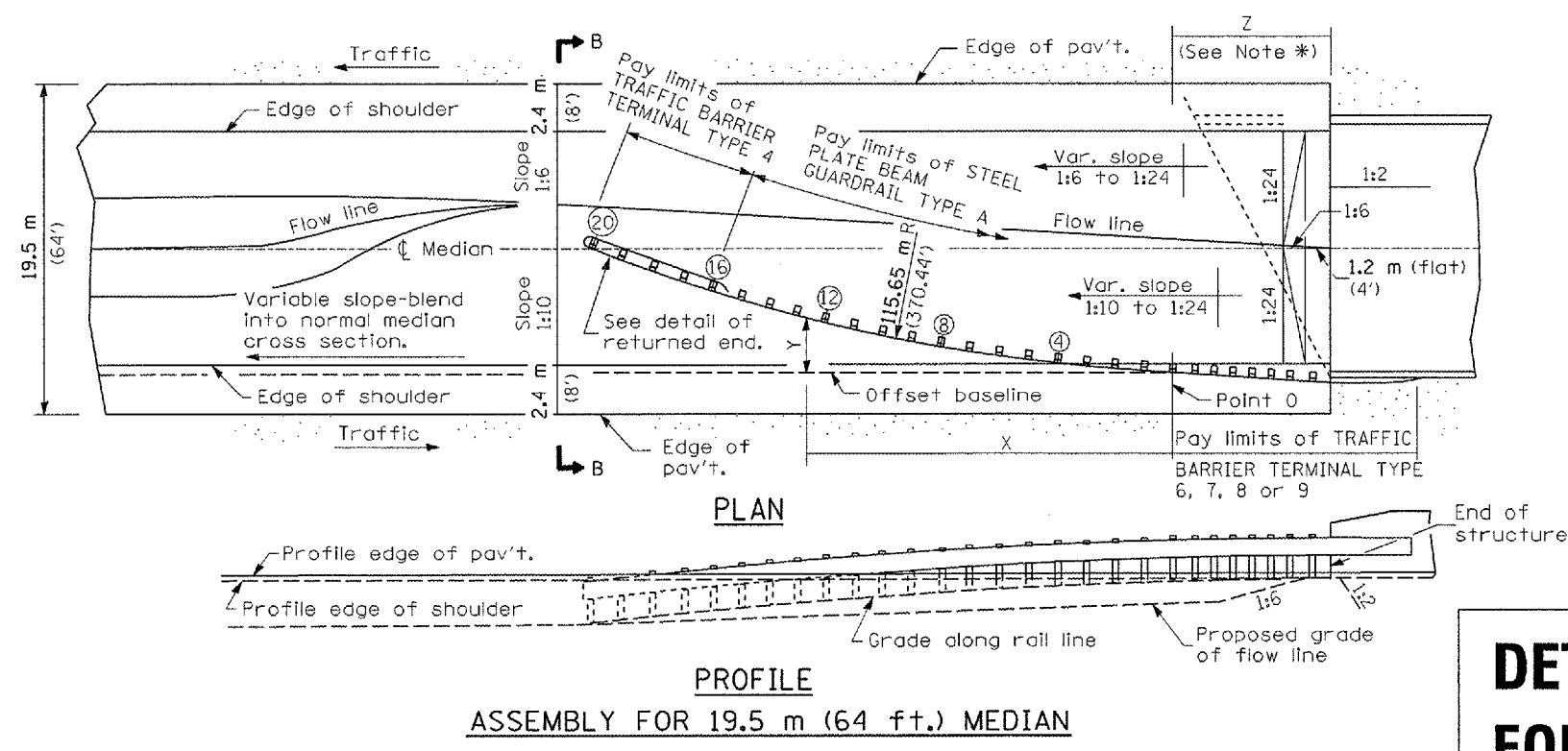
- See Standard 630001 for details of guard-rail not shown.
- * For dual structures skewed right forward, the nose of the Type 4 terminal shall be positioned longitudinally away from the structure for a distance equal to dimension Z. Appropriate adjustments to the length of the Type A guardrail and its offsets (Y) shall be calculated and used. All additional lengths of guardrail shall be in increments of 3.87 m (12'-6").
- For dual structures that are 90°, or skewed left forward, the length of guardrail is appropriate.
- The bearing plate K shall be held in position by (2) two eight penny nails driven into the post and bent over the top of the plate.
- All slopes are expressed as units of vertical displacement to units of horizontal displacement (V:H).

All dimensions are in millimeters (inches) unless otherwise shown.

All dimensions are in millimeters (inches) unless otherwise shown.



PROFILE
ASSEMBLY FOR 26.8 m (88 ft.) MEDIAN



PROFILE
ASSEMBLY FOR 19.5 m (64 ft.) MEDIAN

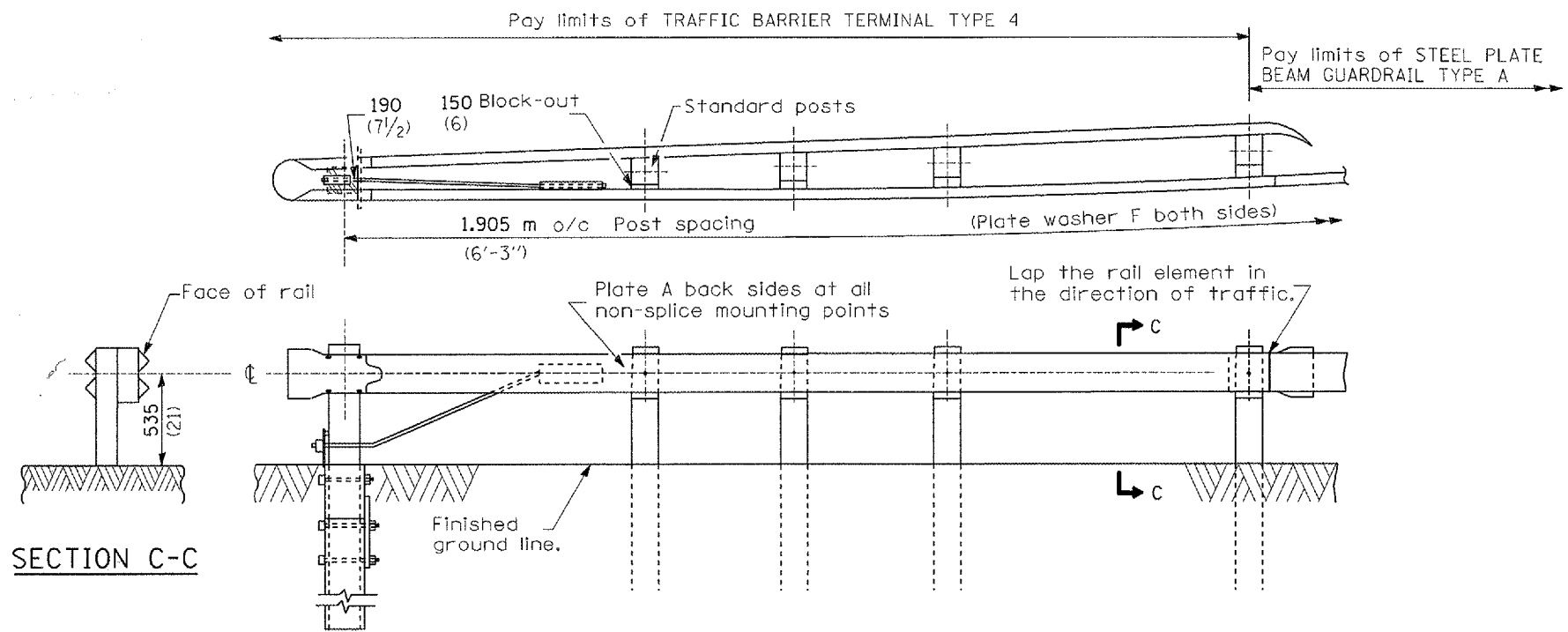
DETAIL INCLUDED FOR REPAIR ONLY

REVISIONS	
NAME	DATE

ILLINOIS DEPARTMENT OF TRANSPORTATION
TRAFFIC BARRIER TERMINAL TYPE 4

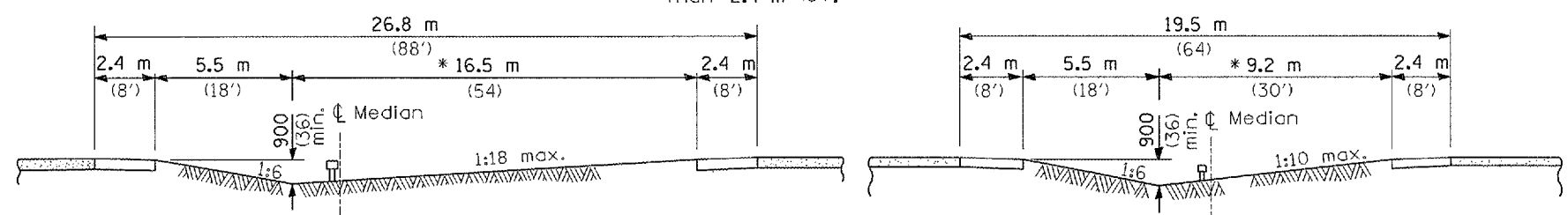
F. A. SHE.	SECTION	COUNTY	TOTAL SHEETS	SHEET NO.
VAR.	*	VAR.	14	14
STA.	TO STA.			
FED. ROAD DIST. NO.	ILLINOIS	FED. AID PROJECT		

D-3 HIGHWAY DAMAGE REPAIR 2005
CONTRACT #66660



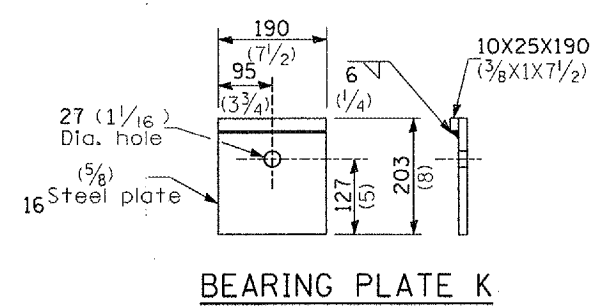
RETURNED END DETAIL

* Adjust this dimension when the width of the shoulders is other than 2.4 m (8').

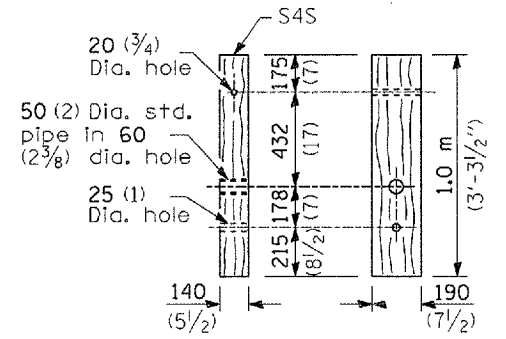


SECTION A-A

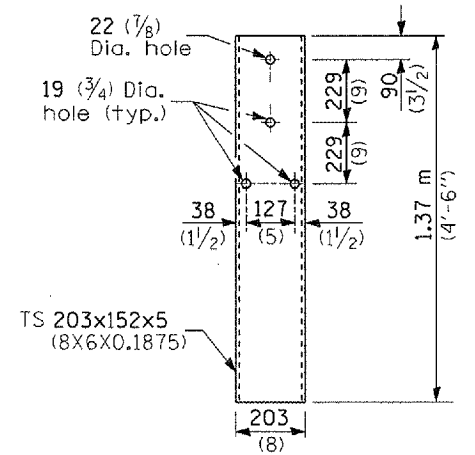
SECTION B-B



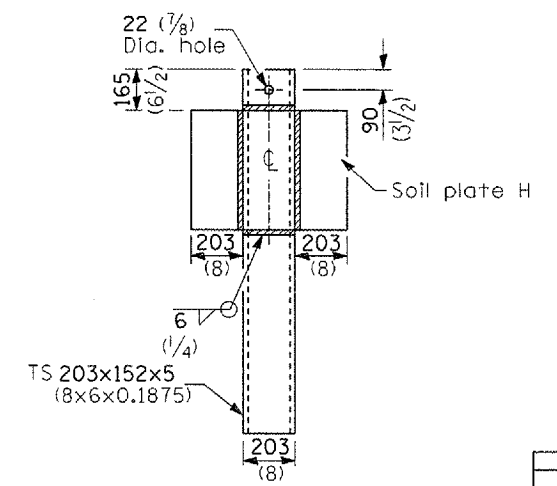
BEARING PLATE K



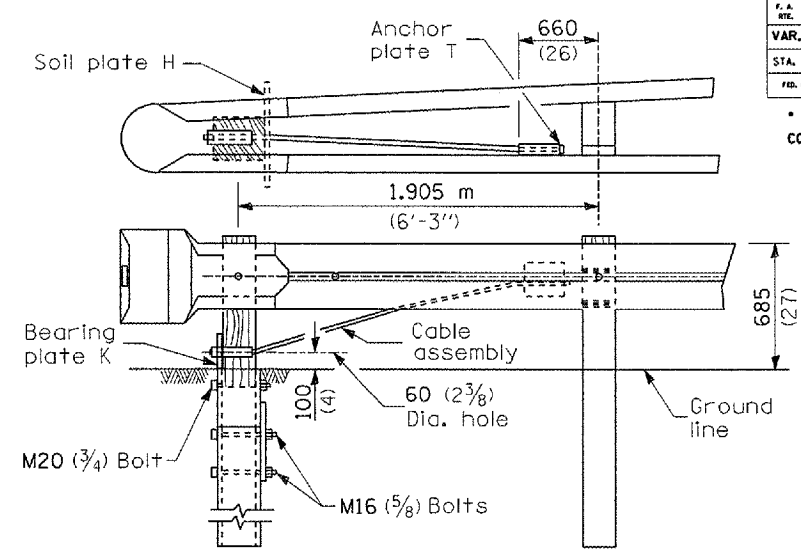
WOOD BREAKAWAY POST



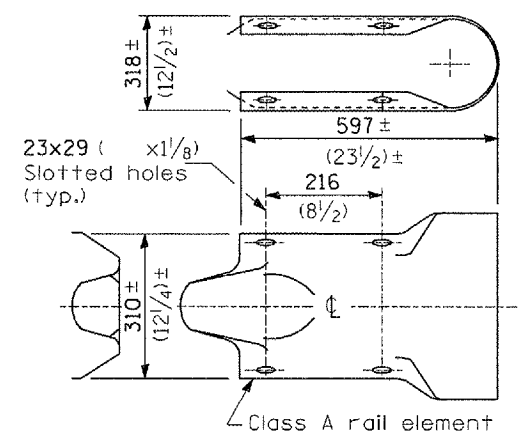
STEEL TUBE



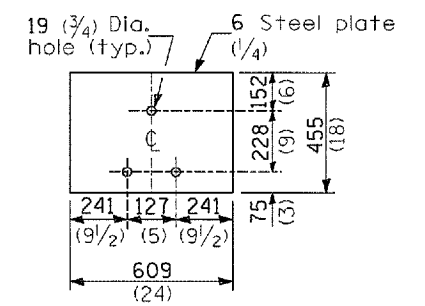
ALTERNATE SOIL PLATE CONNECTION



WOOD POST TUBULAR STEEL FOUNDATION



RETURN END SECTION



SOIL PLATE H

DETAIL INCLUDED FOR REPAIR ONLY

All dimensions are in millimeters (inches) unless otherwise shown.

ILLINOIS DEPARTMENT OF TRANSPORTATION

TRAFFIC BARRIER TERMINAL TYPE 4

REVISIONS	
NAME	DATE

3/31/2005 c:\p\ro\lect\led0605\detal1.s.dgn