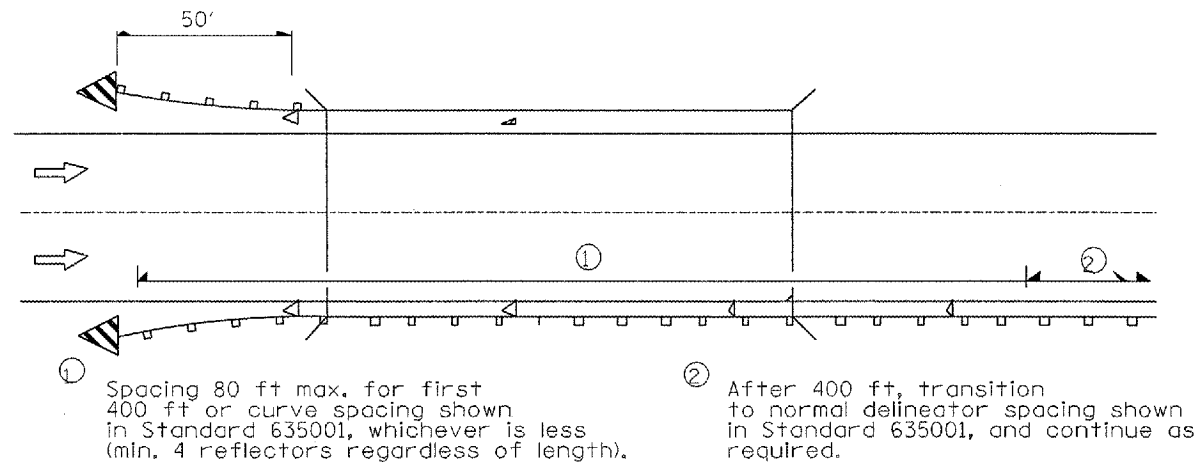
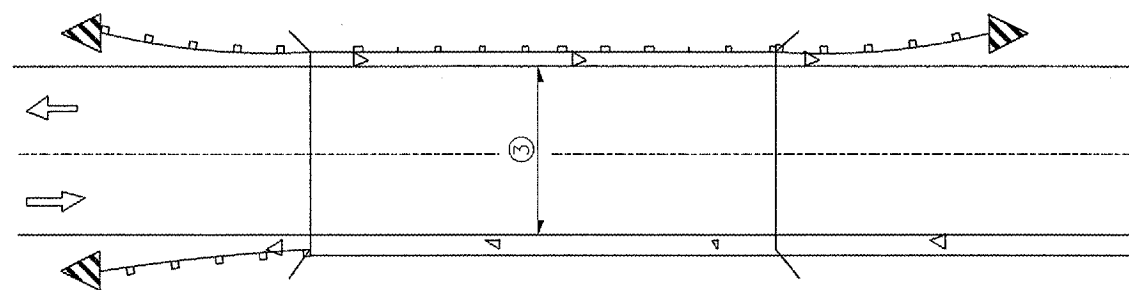


F. A. SHE.	SECTION	COUNTY	TOTAL SHEETS	SHEET NO.
VAR.	*	VAR.	14	5
STA.	TO STA.			
FED. ROAD DIST. NO.	ILLINOIS	FED. AID PROJECT		

* D-3 HIGHWAY DAMAGE REPAIR 2005
CONTRACT #66660

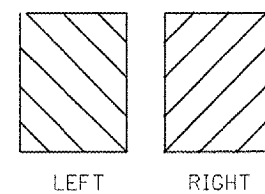
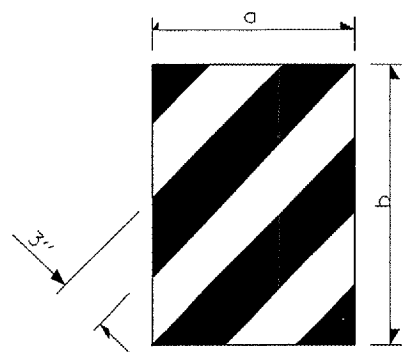


ONE-WAY TRAFFIC



TWO-WAY TRAFFIC

- ◁ Monodirectional silver
- ◀ Monodirectional amber
- ▴ Terminal Marker - Black/Yellow Left or Right as appropriate



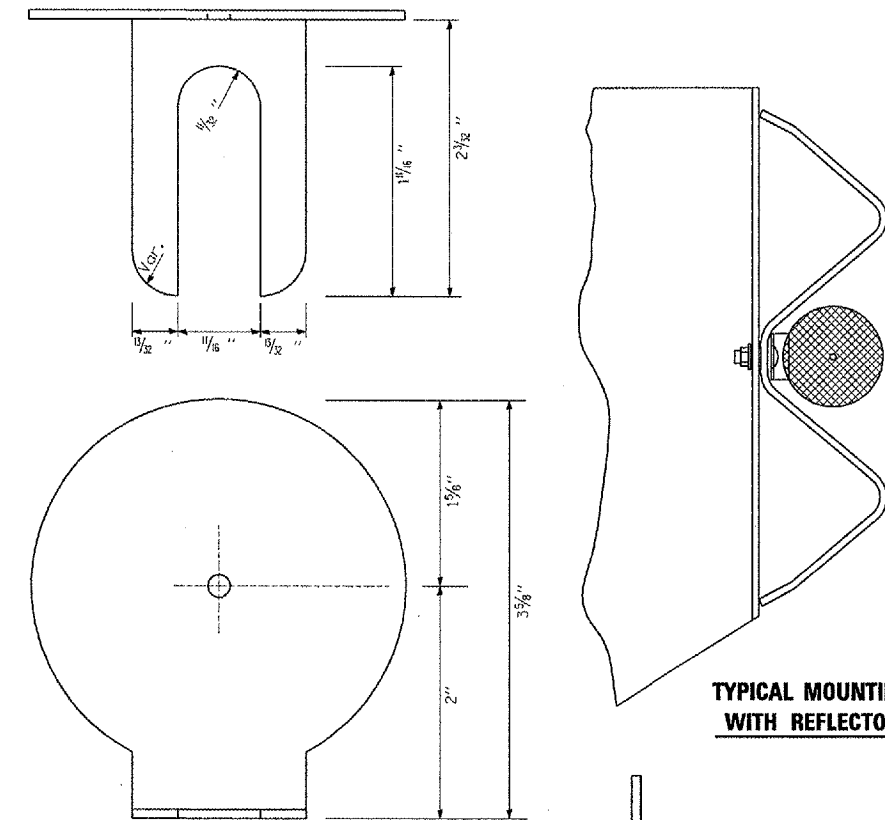
DIMENSION	CASE I	CASE II
a	*	450 (18)
b	*	406 (16)

* The width and height (a, b) of the terminal marker shall be within approximately 25 mm (1 inch) of the outer edge of the terminal end, with a minimum reflective area of 0.18 m² (288 sq. in.)

TERMINAL MARKER DETAILS

Color: Black / Yellow reflectorized

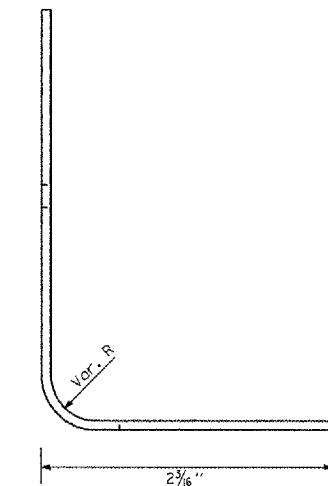
REFLECTOR AND TERMINAL MARKER PLACEMENT



REFLECTOR MARKER TYPE A

NOTES:

- BRACKET IS TO BE FABRICATED FROM 12 GA. (MIN) STEEL GALVANIZED IN ACCORDANCE WITH AASHTO M III.
- MIN. 3 REFLECTORS PER SIDE.
- BRACKET "FOOT" SHALL BE PLACED BETWEEN THE BOLT HEAD AND THE PLATE WASHER (IF PRESENT).
- BRACKETS SHALL NOT BE PLACED WITHIN 25 FT OF THE END OF A BREAKAWAY CABLE TERMINAL (BCT) SECTION OR WITHIN AN EXPANSION SPLICE
- ON THRIE BEAM RAIL, THE BRACKETS SHALL BE ATTACHED TO THE UPPER SPLICE BOLTS.
- USE CRYSTAL COLOR, BI-DIRECTIONAL REFLECTORS USE AMBER (LEFT) AND CRYSTAL (RIGHT), MONODIRECTIONAL REFLECTORS ON INTERSTATES
- ALL DIMENSIONS SHOWN ARE MINIMUM



REFLECTOR DETAIL

REVISIONS	
NAME	DATE

ILLINOIS DEPARTMENT OF TRANSPORTATION

DETAILS