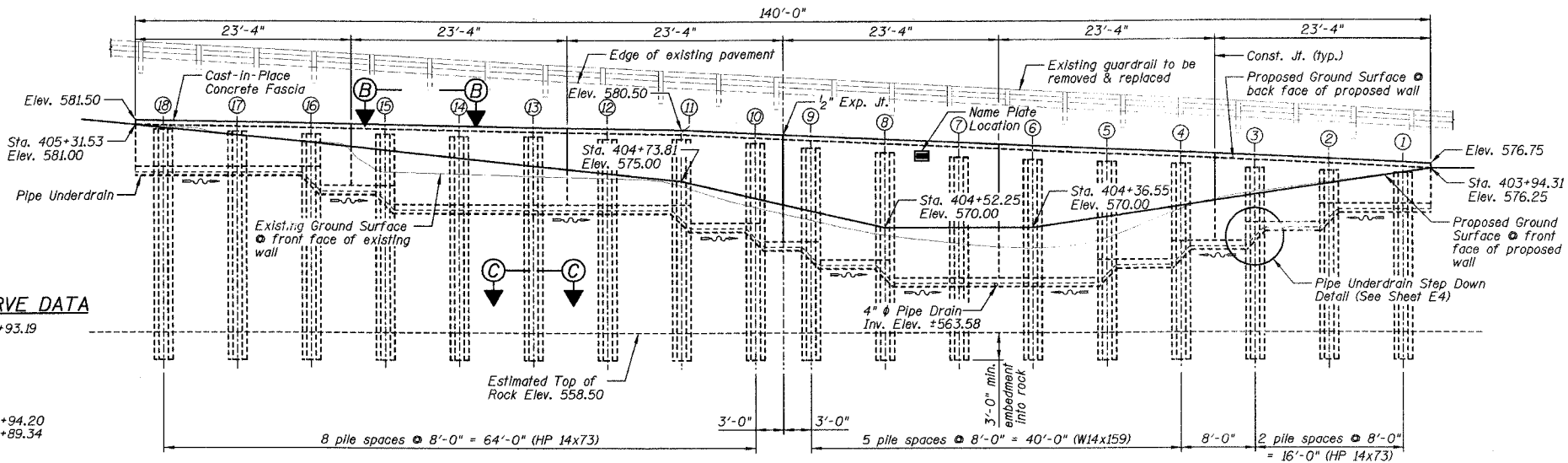


Benchmarks: 1.) Top of guardrail post on the South side of IL Rte. 71 @ the back center of the 10th post East from the West end of the rail @ Station 400+80.31/14.61' RT., Elevation = 581.01.
 2.) Top of guardrail post on the South side of IL Rte. 71 @ back center of the 10th post West from the East end of the rail @ Station 403+50.18/14.71' RT., Elevation = 580.64.

Existing Structure: Existing Retaining Wall, built 1922, Section I-1 from Station ±402+30.00/±29.0' LT. to Station ±405+09.00/±34.0' LT. of F.A.P. 627 (IL 71). Consists of sheet piling and 28 steel piles @ approximately 4'-0" centers. The structure is approximately 279'-0" long.

No Salvage.



DESIGN SPECIFICATIONS

ASHTO 2002

DESIGN STRESSES

FIELD UNITS

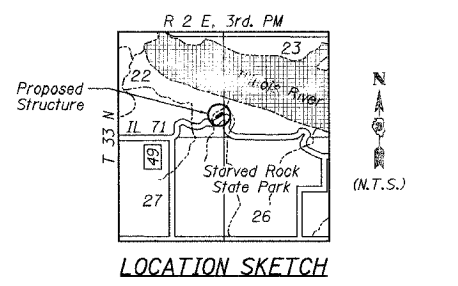
f'c = 3,500 psi (Cast-in-Place Concrete)
 fy = 60,000 psi (Reinforcement)
 fy = 36,000 psi (Soldier Pile Steel)

HORIZONTAL CURVE DATA

P.I. STA. = 404+93.19
 Δ = 16°27'
 D = 4°09'50"
 R = 1375.98'
 T = 198.89'
 L = 395.05'
 E = 143'
 P.C. STA. = 402+94.20
 P.T. STA. = 406+89.34

F.A.P. RTE.	SECTION	COUNTY	TOTAL SHEETS NO.
627	(1-1)-1	A SALLE	60 41
STA.	TO STA.		
FED. ROAD DIST. NO.	ILLINOIS FED. AID PROJECT		
CONTRACT NO. 66550	SHEET NO. E1		

OF 9 SHEETS



- CONSTRUCTION SEQUENCE:**
- Excavate working platform and drill shaft excavation for soldier pile, embedment into rock shall be as shown on the plans.
 - Set soldier pile in the shaft excavation and brace to maintain proper pile position.
 - Place encasement concrete around soldier pile to the bottom of the C.I.P. concrete fascia, and Controlled Low Strength Material (CLSM) to the excavated ground surface.
 - Excavate in front of wall in stages removing only the soil necessary to place each timber lagging snug against excavated surface. (Removal of the Existing Retaining Wall shall be done during this sequence.)
 - After the lagging has been placed to the depths shown in the plans, the Geocomposite Wall Drain shall be attached to and cover the untreated timber lagging.
 - The French Drain shall be excavated, lined with fabric, pipe and aggregate placed and connected to the Geocomposite Wall Drain as shown on the plans.
 - Attach stud shear connectors, set reinforcement, form and pour C.I.P. concrete fascia.

INDEX TO SHEETS

SHEET NO.	TITLE
E1	GENERAL PLAN AND ELEVATION
E2	GENERAL NOTES, BILL OF MATERIALS, SECTIONS AND DETAILS
E3	WALL REINFORCEMENT AND SOLDIER PILE INFORMATION
E4	RUSTICATION FINISH DETAILS AND PIPE UNDERDRAIN DETAILS
E5-E7	SOIL BORING/ROCK CORE LOGS
E8-E9	EXISTING PLANS

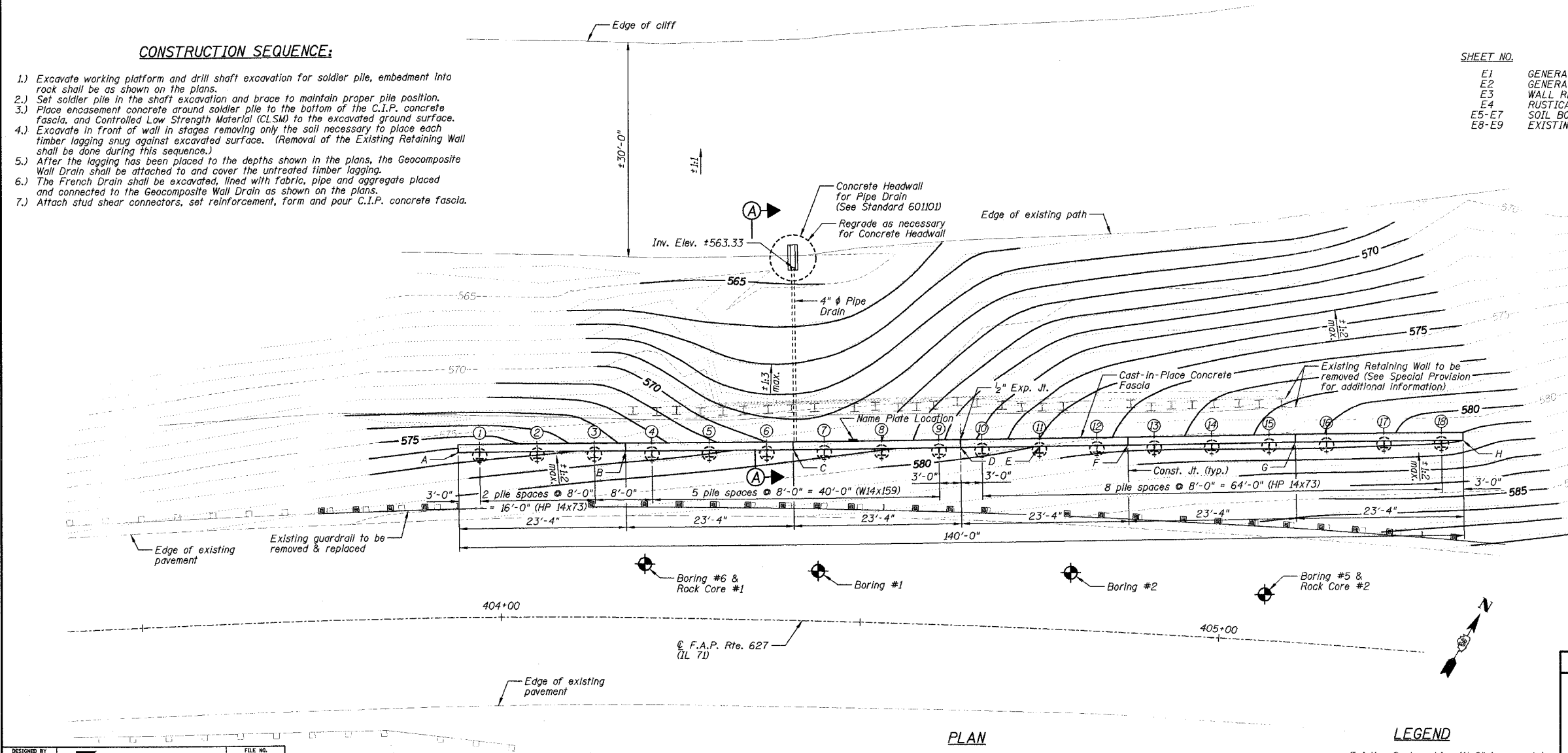
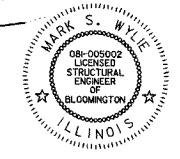
- NOTES:**
- Work this sheet with Sheets E2 thru E4.
 - For Sections A-A, B-B & C-C see Sheet E2.
 - The existing retaining wall to be removed is not shown in the Elevation for clarity.

WALL INFORMATION CHART

Reference Points	Station to Back Face of Wall	Offset to Back Face of Wall
A	403+94.31	23.12' LT.
B	404+17.25	23.34' LT.
C	404+40.19	23.94' LT.
D	404+63.09	24.93' LT.
E	404+73.88	25.54' LT.
F	404+85.96	26.31' LT.
G	405+08.77	28.08' LT.
H	405+31.53	30.23' LT.

APPROVED
 FOR STRUCTURAL ADEQUACY ONLY

Mark S. Wylie
 MARK S. WYLIE
 LICENSED STRUCTURAL ENGINEER
 NO. 081-005002
 Exp. Date 11/30/06



DESIGNED BY: J.M.L.
 DRAWN BY: D.J.M.
 CHECKED BY: M.S.W.

Farnsworth GROUP
 2700 Midway Drive
 Bloomington, Illinois 61704
 309/663-6436, 309/663-1871

FILE NO. 24-6772
 DATE 03-24-05
 SHEET NO. 41 of 60

LEGEND

Existing Contour Line (1'-0" increments)

Existing Contour Line (5'-0" increments)

Proposed Contour Line

GENERAL PLAN AND ELEVATION
 IL ROUTE 71
 SOLDIER PILE RETAINING WALL
 F.A.P. ROUTE 627 - SEC. (1-1)-1
 LA SALLE COUNTY
 STATION 403+94.31 TO STATION 405+31.53
 STRUCTURE NO. 050-W002