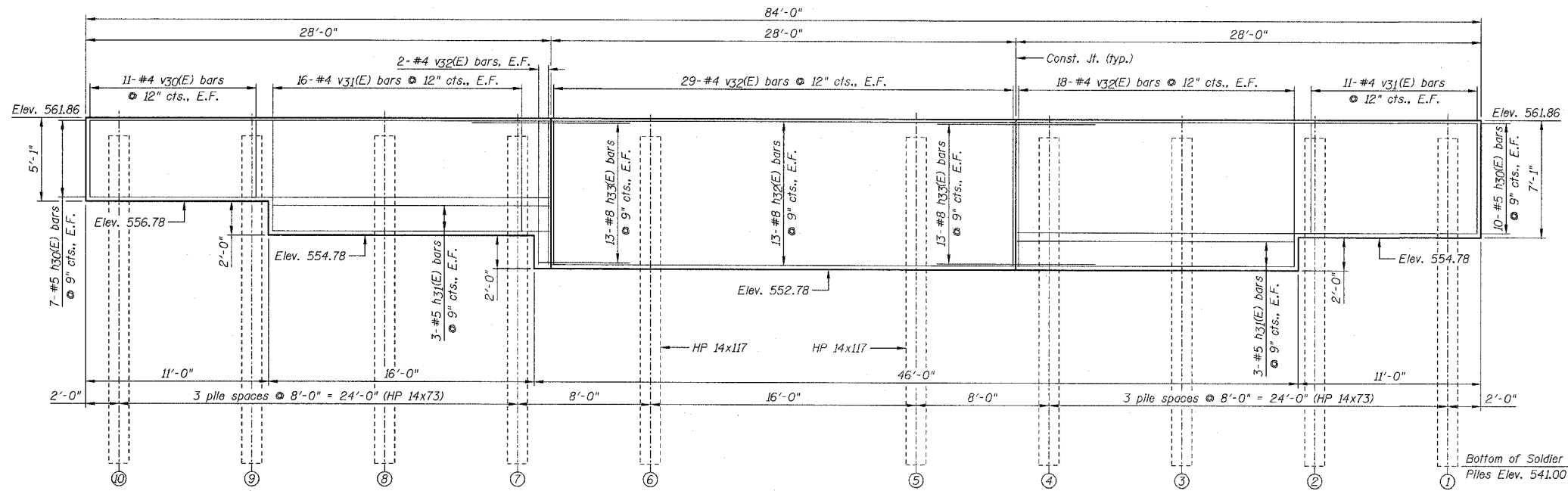
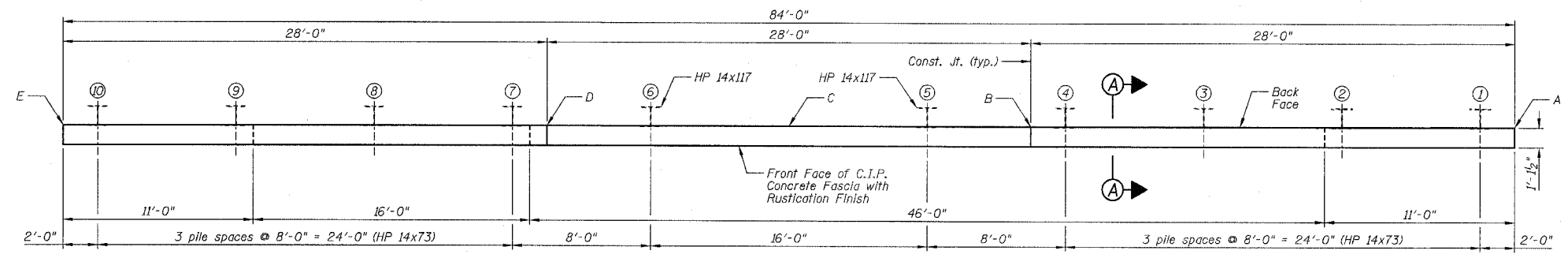


F.A.P. RTE.	SECTION	COUNTY	TOTAL SHEETS	SHEET NO.
627	(1-11-1)	LA SALLE	60	37
STA.	TO STA.			
FED. ROAD DIST. NO.	ILLINOIS FED. AID PROJECT			
CONTRACT NO. 66550	SHEET NO. D3			

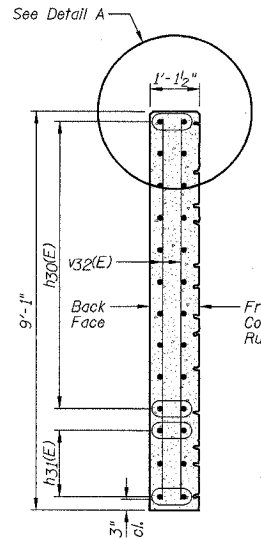
OF 6 SHEETS



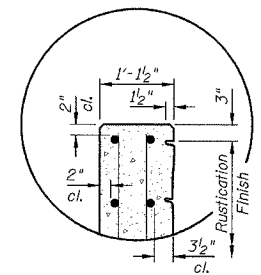
ELEVATION (SHOWING REINFORCEMENT)
(Looking South)



PLAN



SECTION A-A



DETAIL A

BILL OF MATERIALS

Bar	No.	Size	Length	Shape
h30(E)	34	#5	27'-8"	
h31(E)	12	#5	16'-8"	
h32(E)	26	#8	27'-10"	
h33(E)	52	#8	9'-6"	
v30(E)	22	#4	4'-8"	
v31(E)	54	#4	6'-8"	
v32(E)	98	#4	8'-8"	

Item	Unit	Quantity
Concrete Structures	Cu. Yds.	27.7
Stud Shear Connectors	Each	104
Furnishing Soldier Piles (HP 14x73)	Foot	158
Furnishing Soldier Piles (HP 14x117)	Foot	40
Reinforcement Bars, Epoxy Coated	Pound	5320

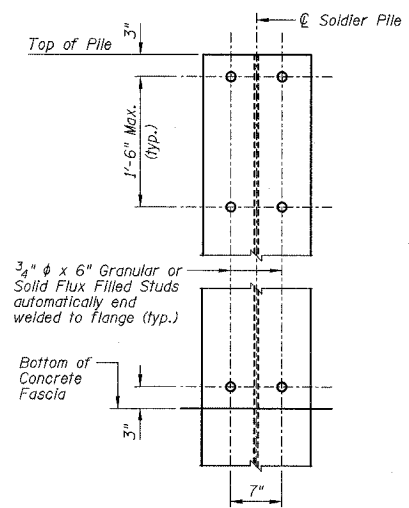
WALL INFORMATION CHART

Reference Points	Location at Wall	Station to Back Face of Wall	Offset to Back Face of Wall	Wall Height
A	Begin Wall	401+80.00	37.57' LT.	7'-1"
B	Const. Jt.	402+08.00	37.57' LT.	9'-1"
C	∅ Wall	402+22.00	37.57' LT.	9'-1"
D	Const. Jt.	402+36.00	37.57' LT.	9'-1"
E	End Wall	402+64.00	37.57' LT.	5'-1"

Note: See Plan for Reference Point locations.

STEEL SOLDIER PILE INFORMATION CHART

Pile No.	Station	Offset to Ctr. of Pile	Pile Section	Top of Pile Elevation	Bottom of Pile Elevation	Pile Length	No. of Stud Shear Connectors	Top of Class SI Concrete Encasement Elevation
1	401+82.00	37.04' LT.	HP 14x73	560.75	541.00	19'-9"	10	554.78
2	401+90.00	37.04' LT.	HP 14x73	560.75	541.00	19'-9"	10	552.78
3	401+98.00	37.04' LT.	HP 14x73	560.75	541.00	19'-9"	12	552.78
4	402+06.00	37.04' LT.	HP 14x73	560.75	541.00	19'-9"	12	552.78
5	402+14.00	37.04' LT.	HP 14x117	560.75	541.00	19'-9"	12	552.78
6	402+30.00	37.04' LT.	HP 14x117	560.75	541.00	19'-9"	12	552.78
7	402+38.00	37.04' LT.	HP 14x73	560.75	541.00	19'-9"	10	552.78
8	402+46.00	37.04' LT.	HP 14x73	560.75	541.00	19'-9"	10	554.78
9	402+54.00	37.04' LT.	HP 14x73	560.75	541.00	19'-9"	8	554.78
10	402+62.00	37.04' LT.	HP 14x73	560.75	541.00	19'-9"	8	556.78



STUD SHEAR CONNECTORS LAYOUT

NOTES:

- 1) Work this sheet with Sheets D1, D2 and D4.
- 2) E.F. denotes Each Face.
- 3) For "Rustication Finish" details see Sheet D4.
- 4) Reinforcement bars designated (E) shall be epoxy coated.
- 5) h33(E) bars shall be field cut as required.
- 6) Minimum lap length: #8 bar = 4'-6"
- 7) See Sheet D2 For Construction Joint Detail.

**WALL REINFORCEMENT AND
SOLDIER PILE INFORMATION**

**IL ROUTE 71
SOLDIER PILE RETAINING WALL
F.A.P. ROUTE 627 - SEC. (1-11-1)
LA SALLE COUNTY
STATION 401+80.00 TO STATION 402+64.00
STRUCTURE NO. 050-W003**

DESIGNED BY J.M.L.	Farnsworth GROUP 2700 McGraw Drive Bloomington, Illinois 61704 800/888-8436, 308/883-1671 fax	FILE NO. 24-6772
DRAWN BY D.J.M.		DATE 03-24-05
CHECKED BY M.S.W.		SHEET NO. 37 of 60