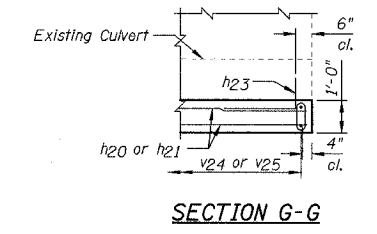
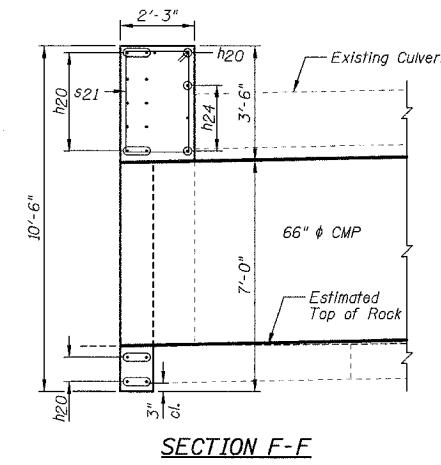
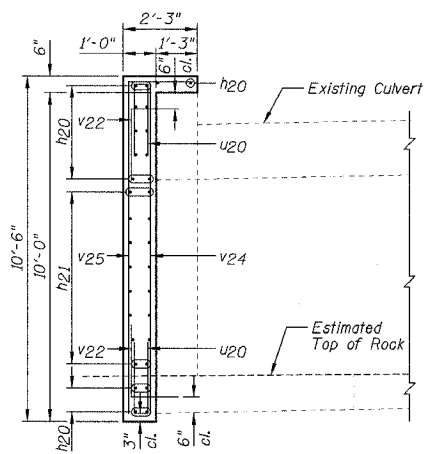
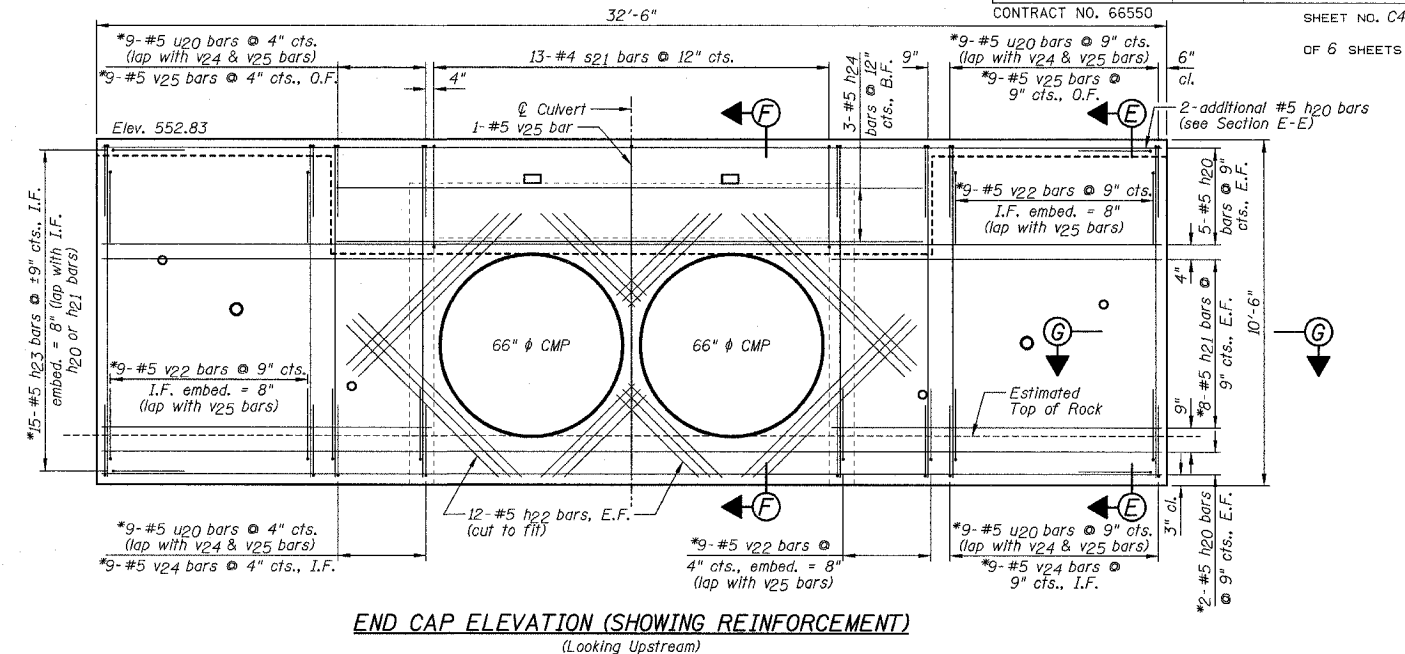
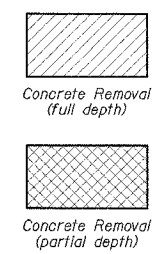
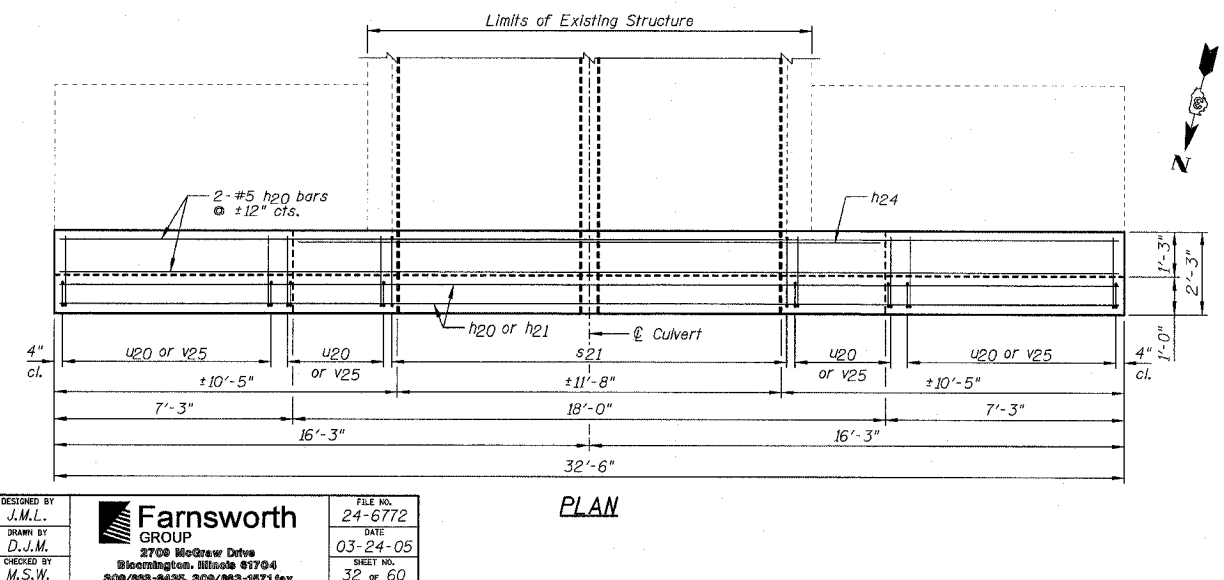
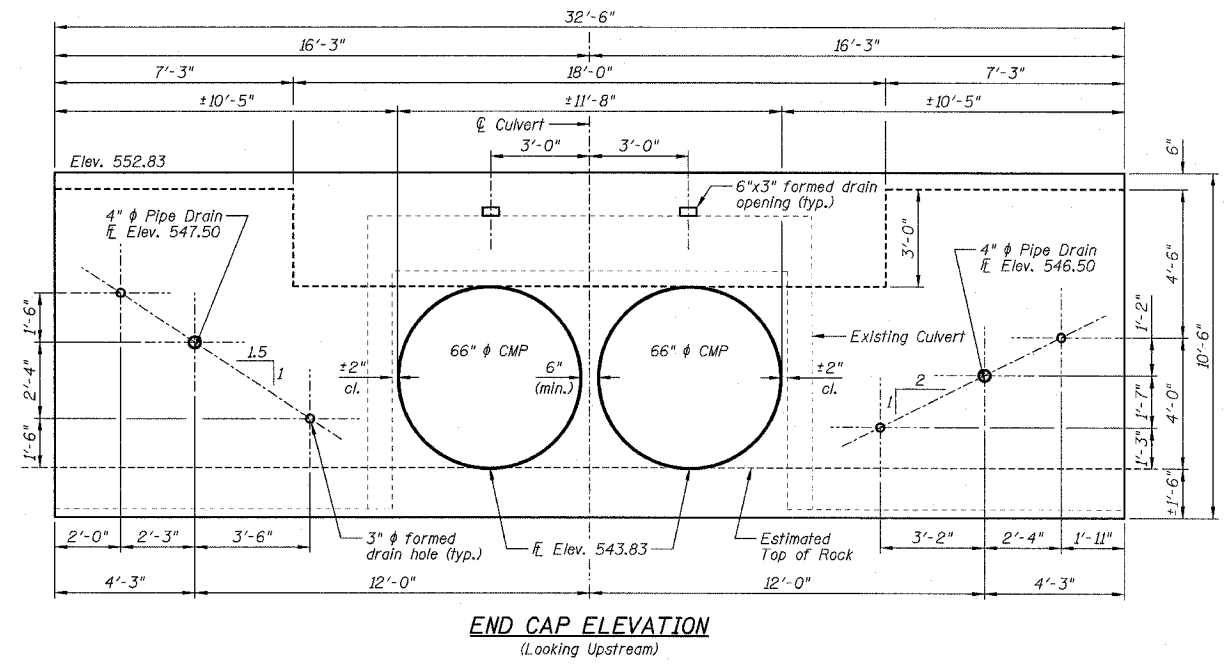
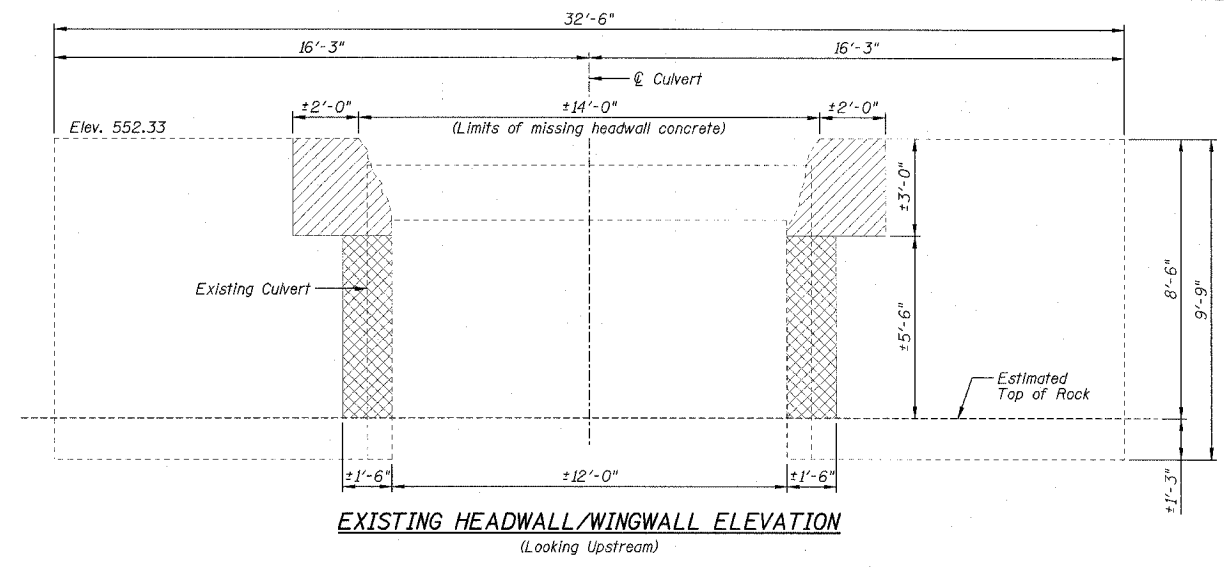


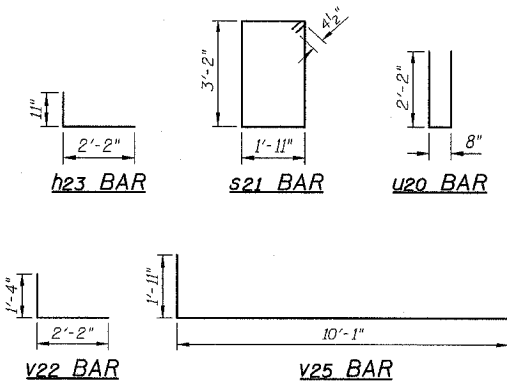
F.A.P. RTE.	SECTION	COUNTY	TOTAL SHEETS	SHEET NO.
627	(1-11-1)	LA SALLE	60	32
STA.	TO STA.			
	ILLINOIS FED. AID PROJECT			
FED. ROAD DIST. NO.	CONTRACT NO. 66550		SHEET NO. C4	
			OF 6 SHEETS	



- NOTES:**
- 1.) Work this sheet with Sheets C1 thru C3.
 - 2.) Minimum lap length: #5 bar = 2'-2"
 - 3.) The existing concrete within the hatched area denoted as "Concrete Removal (partial depth)" shall have all loose, unsound concrete removed completely to a depth approved by the Engineer. Cost included with "Concrete Removal".
 - 4.) Existing reinforcement not extended into new concrete shall be cut off flush.
 - 5.) Existing reinforcement extending into new concrete shall be cleaned, straightened and incorporated into the new construction. Cost included with "Concrete Removal".
 - 6.) Drill & epoxy grout h23 and v25 bars in 8" (min.) drilled holes according to Section 584 of the Standard Specifications.
 - 7.) The type of epoxy grout shall be approved by the Engineer.
 - 8.) E.F. denotes Each Face I.F. denotes Inside Face O.F. denotes Outside Face B.F. denotes Back Face
 - 9.) Cut the h22 bars as required to fit diagonally around the 66" pipe culverts (min. 3" clearance from the 66" pipe culverts).
 - 10.) The concrete cover over reinforcement shall be 2" clear unless otherwise noted.
 - 11.) All proposed formed openings shown on the End Cap Elevation shall be extended through the existing headwall and wingwalls. The cost of removing the existing concrete to facilitate these openings will be included with "Concrete Removal".
 - 12.) Space reinforcement bars to miss proposed formed openings.
 - 13.) *The reinforcement bars are designated in one location on the End Cap Elevation (Showing Reinforcement), but are symmetrical about the centerline of the culvert.

BILL OF MATERIALS

Bar	No.	Size	Length	Shape	
h20	16	#5	32'-2"	—	
h21	32	#5	9'-11"	—	
h22	48	#5	7'-0"	—	
h23	30	#5	3'-1"	—	
h24	3	#5	17'-8"	—	
s21	13	#4	10'-11"	□	
u20	72	#5	5'-0"	—	
v22	54	#5	3'-6"	—	
v24	36	#5	10'-1"	—	
v25	37	#5	12'-0"	—	
Item				Unit	Quantity
Reinforcement Bars				Pound	2880
Concrete Structures				Cu Yd	14.1
Concrete Removal				Cu Yd	1.0



DESIGNED BY J.M.L. FILE NO. 24-6772
 DRAWN BY D.J.M. DATE 03-24-05
 CHECKED BY M.S.W. SHEET NO. 32 OF 60

Farnsworth GROUP
 2709 McGraw Drive
 Bloomington, Illinois 61704
 309/858-9435 309/858-1671 fax

NORTH CAST-IN-PLACE END CAP PLAN, ELEVATIONS, SECTIONS AND DETAILS
 IL ROUTE 71
 OVER TRIBUTARY TO ILLINOIS RIVER
 F.A.P. ROUTE 627 - SEC. (1-11-1)
 LA SALLE COUNTY
 STATION 402+22.00
 STRUCTURE NO. 050-C803