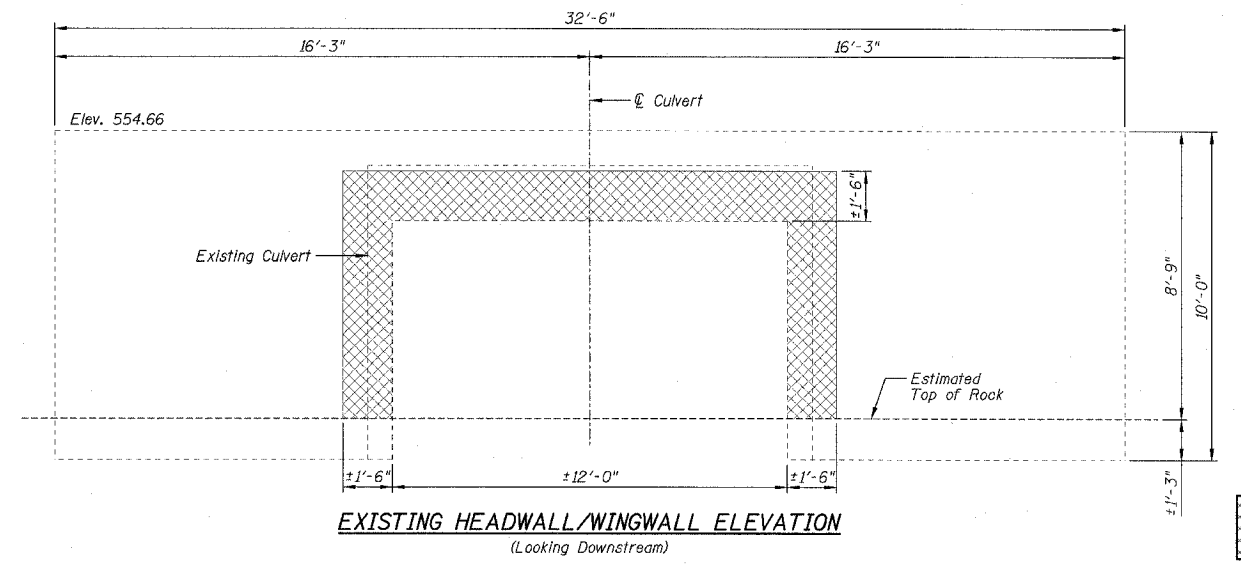
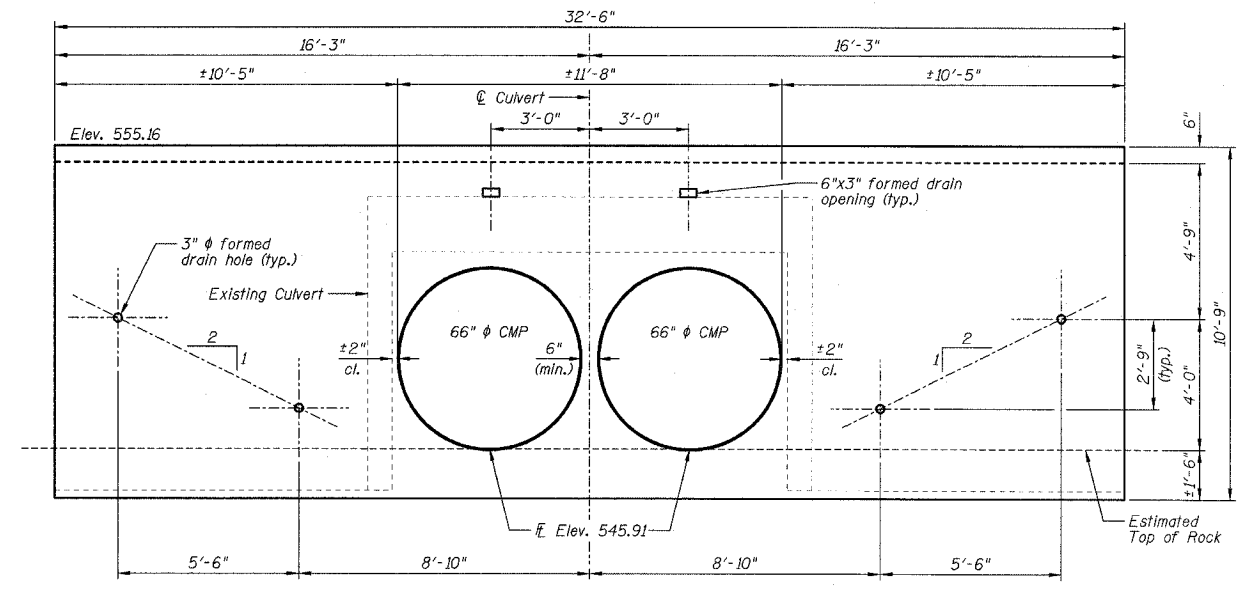
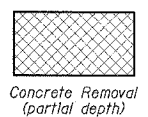


F.A.P. RTE.	SECTION	COUNTY	TOTAL SHEETS NO.
627	(1-1)I-1	LA SALLE	60 31
STA.	TO STA.		
FED. ROAD DIST. NO.	ILLINOIS FED. AID PROJECT		
CONTRACT NO. 66550			SHEET NO. C3

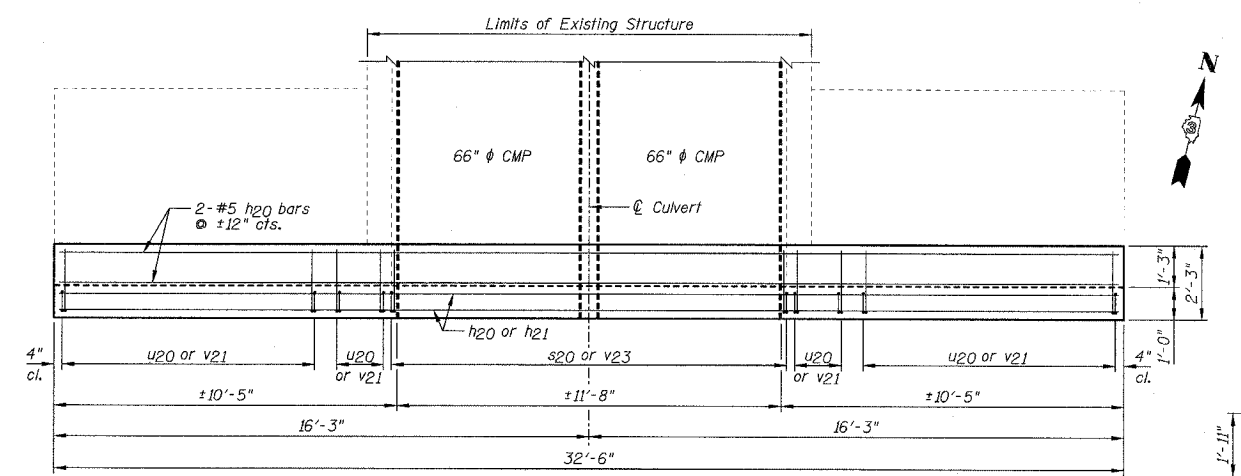
OF 6 SHEETS



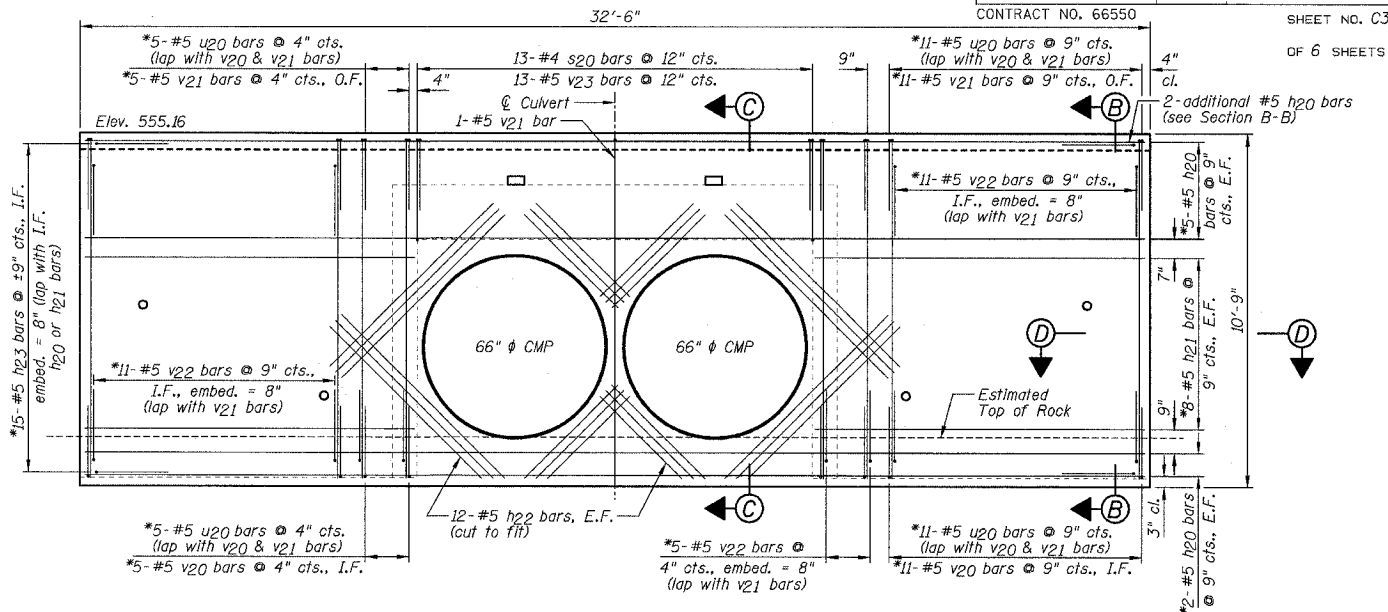
**EXISTING HEADWALL/WINGWALL ELEVATION**  
(Looking Downstream)



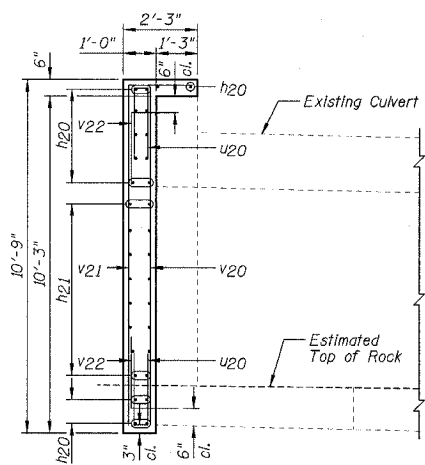
**END CAP ELEVATION**  
(Looking Downstream)



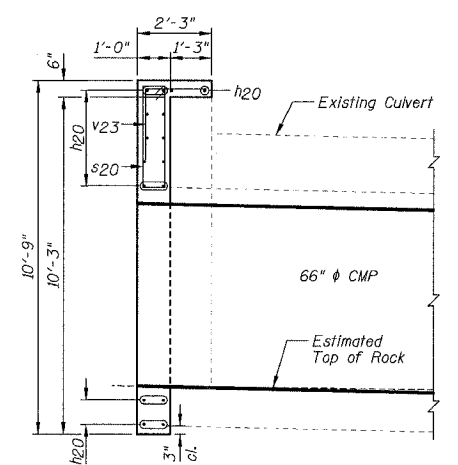
**PLAN**



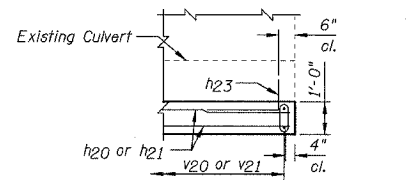
**END CAP ELEVATION (SHOWING REINFORCEMENT)**  
(Looking Downstream)



**SECTION B-B**



**SECTION C-C**



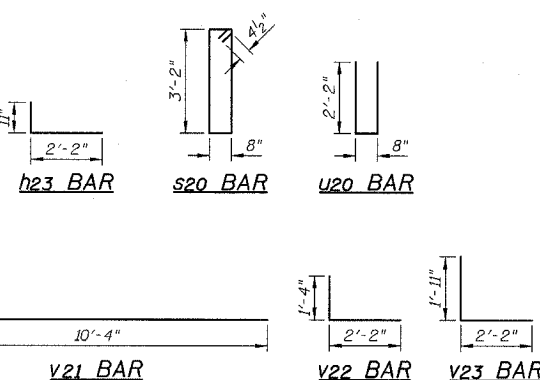
**SECTION D-D**

**NOTES:**

- 1.) Work this sheet with Sheets C1, C2 & C4.
- 2.) Minimum lap length: #5 bar = 2'-2"
- 3.) The existing concrete within the hatched area denoted as "Concrete Removal (partial depth)" shall have all loose, unsound concrete removed completely to a depth approved by the Engineer. Cost included with "Concrete Removal".
- 4.) Existing reinforcement extending into new concrete shall be cleaned, straightened and incorporated into the new construction. Cost included with "Concrete Removal".
- 5.) Drill & epoxy grout h23 and v22 bars in 8" (min.) drilled holes according to Section 584 of the Standard Specifications.
- 6.) The type of epoxy grout shall be approved by the Engineer.
- 7.) E.F. denotes Each Face I.F. denotes Inside Face O.F. denotes Outside Face
- 8.) Cut the h22 bars as required to fit diagonally around the 66" φ pipe culverts (min. 3" clearance from the 66" φ pipe culverts).
- 9.) The concrete cover over reinforcement shall be 2" clear unless otherwise noted.
- 10.) All proposed formed openings shown on the End Cap Elevation shall be extended through the existing headwall and wingwalls. The cost of removing the existing concrete to facilitate these openings will be included with "Concrete Removal".
- 11.) Space reinforcement bars to miss proposed formed openings.
- 12.) \*The reinforcement bars are designated in one location on the End Cap Elevation (Showing Reinforcement), but are symmetrical about the centerline of the culvert.

**BILL OF MATERIALS**

Bar	No.	Size	Length	Shape
h20	16	#5	32'-2"	—
h21	32	#5	9'-11"	—
h22	48	#5	7'-0"	—
h23	30	#5	3'-1"	—
s20	13	#4	8'-5"	□
u20	64	#5	5'-0"	—
v20	32	#5	10'-4"	—
v21	33	#5	12'-3"	—
v22	54	#5	3'-6"	—
v23	13	#5	4'-1"	—
Item	Unit	Quantity		
Reinforcement Bars	Pound	2740		
Concrete Structures	Cu Yd	11.9		
Concrete Removal	Cu Yd	1.0		



DESIGNED BY J.M.L.  
 DRAWN BY D.J.M.  
 CHECKED BY M.S.W.

**Farnsworth GROUP**  
 2700 McGraw Drive  
 Bloomington, Illinois 61704  
 302/888-8436, 302/888-6711 fax

FILE NO. 24-6772  
 DATE 03-24-05  
 SHEET NO. 31 OF 60

**SOUTH CAST-IN-PLACE END CAP PLAN, ELEVATIONS, SECTIONS AND DETAILS**  
**IL ROUTE 71**  
**OVER TRIBUTARY TO ILLINOIS RIVER**  
**F.A.P. ROUTE 627 - SEC. (1-1)I-1**  
**LA SALLE COUNTY**  
**STATION 402+22.00**  
**STRUCTURE NO. 050-C803**