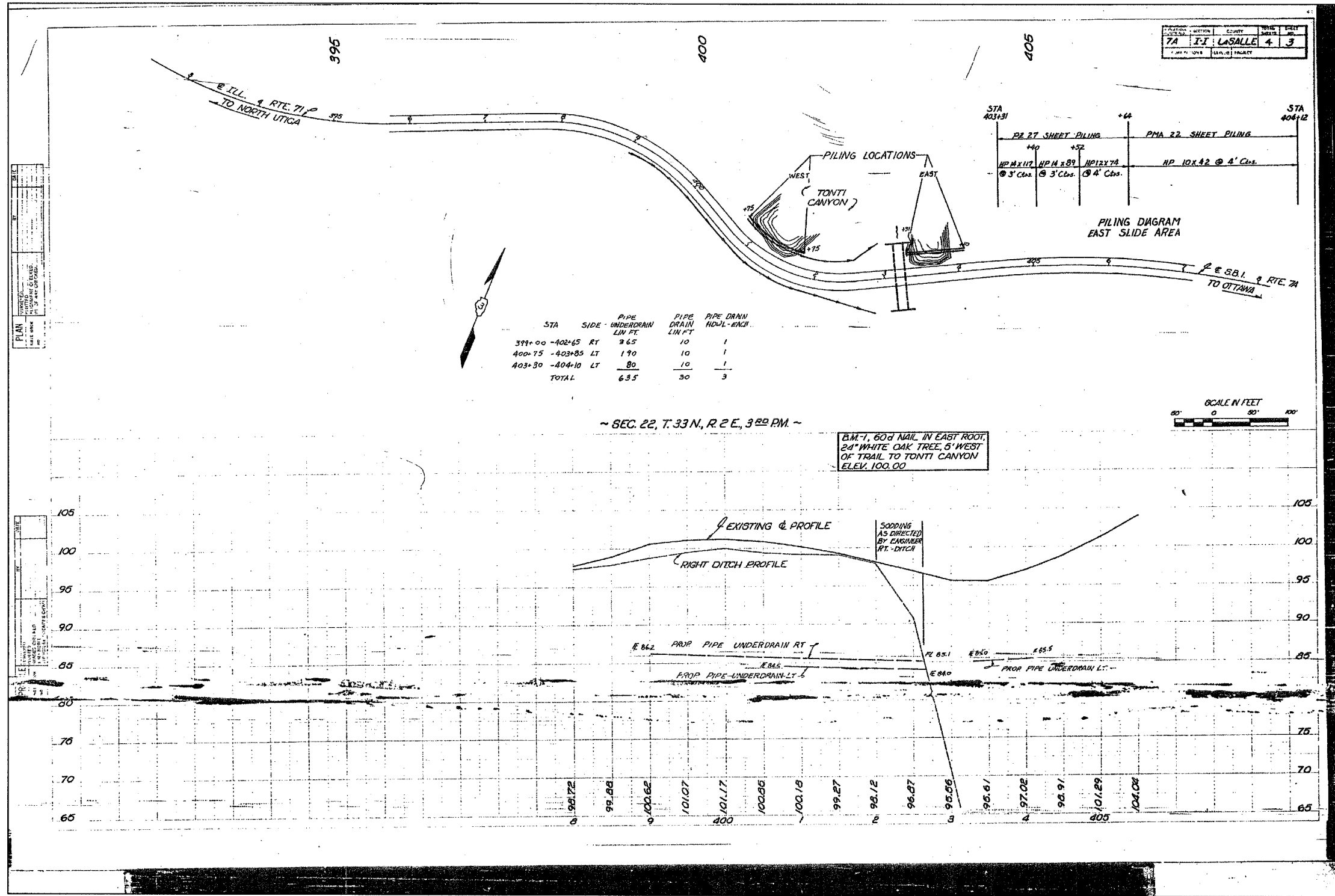


F.A.P. RTE.	SECTION	COUNTY	TOTAL SHEETS NO.
627	(1-11-1)	LA SALLE	60 28
STA.	TO STA.		
FED. ROAD DIST. NO.	ILLINOIS	FED. AID PROJECT	
CONTRACT NO. 66550	SHEET NO. B9		OF 9 SHEETS



STA	SIDE	PIPE UNDERDRAIN LIN FT.	PIPE DRAIN LIN FT.	PIPE DRAIN HOWL-EACH
399+00 - 402+65	RT	365	10	1
400+75 - 403+85	LT	190	10	1
403+30 - 404+10	LT	80	10	1
TOTAL		635	30	3

FOR INFORMATIONAL USE ONLY

EXISTING PLANS
 IL ROUTE 71
 SOLDIER PILE RETAINING WALL
 F.A.P. ROUTE 627 - SEC. (1-11-1)
 LA SALLE COUNTY
 STATION 399+91.88 TO STATION 400+87.50
 STRUCTURE NO. 050-W001

DESIGNED BY J.M.L.		FILE NO. 24-6772
DRAWN BY D.J.M.		DATE 03-24-05
CHECKED BY M.S.W.		SHEET NO. 28 OF 60
2700 McGraw Drive Bloomington, Illinois 61704 309/833-8433, 309/833-1671 fax		