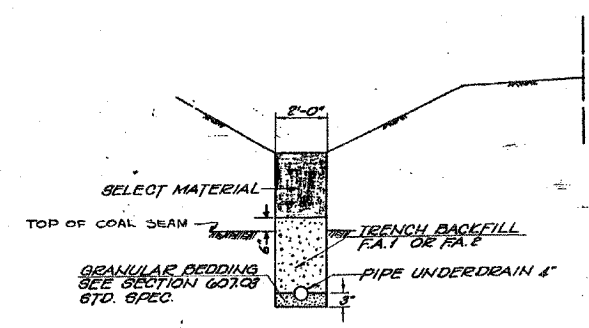


| | | | | |
|---------------------|---------|--------------|------------------|-----------|
| F.A.P. RTE. | SECTION | COUNTY | TOTAL SHEETS | SHEET NO. |
| 627 | (1-DI-1 | LA SALLE | 60 | 27 |
| STA. | | TO STA. | | |
| FED. ROAD DIST. NO. | | ILLINOIS | FED. AID PROJECT | |
| CONTRACT NO. 66550 | | SHEET NO. 88 | | |

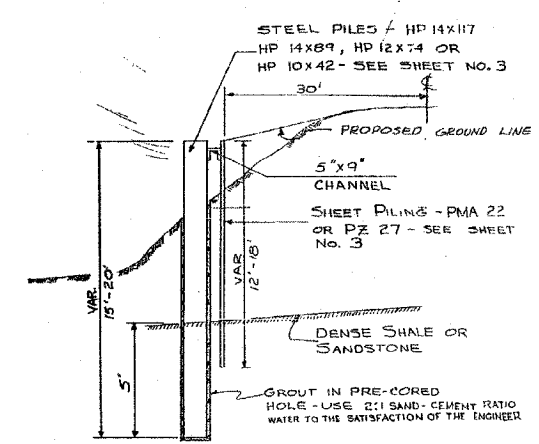
OF 9 SHEETS

| | | | |
|---------|---------|--------------|-----------|
| SECTION | COUNTY | TOTAL SHEETS | SHEET NO. |
| 7A I-I | LaSALLE | 4 | 2 |



PIPE UNDERDRAINS

THE LOCATIONS OF THE UNDERDRAINS SHALL BE DETERMINED BY THE ENGINEER IN THE FIELD AND ESTIMATED QUANTITIES SHOWN HERE ARE INCLUDED IN APPROPRIATE SCHEDULES.

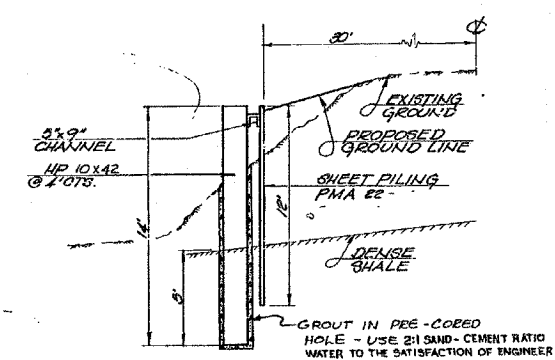


RETAINING WALL EAST SLIDE

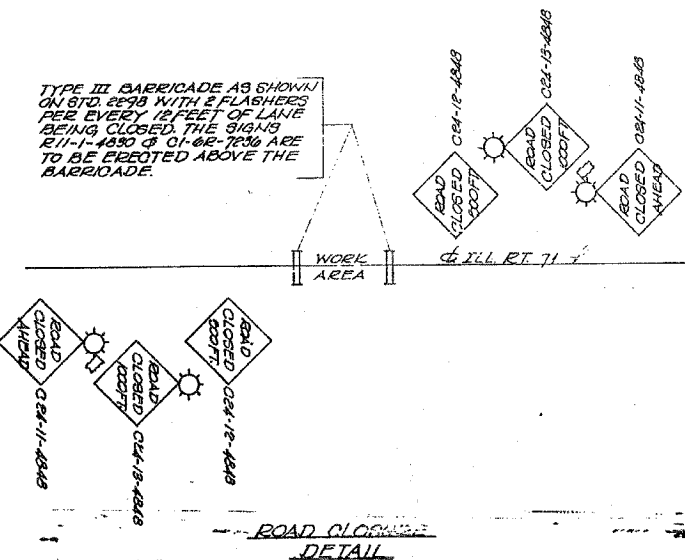
SUMMARY OF QUANTITIES

| CODE NO. | ITEM | UNIT | TOTAL QUANTITY | LOCATION | |
|----------|---|----------|----------------|----------|------|
| | | | | EAST | WEST |
| 204001 | BORROW EXCAVATION | CU. YD. | 910 | 100 | 210 |
| * 503004 | CONCRETE HEADWALLS FOR PIPE DRAINS | EACH | 3 | 1 | 2 |
| 513014 | FURNISHING STEEL PILES HP 10x42 | LIN. FT. | 508 | 144 | 364 |
| * 513049 | STEEL SHEET PILING | SQ. FT. | 2400 | 1200 | 1200 |
| 633004 | CABLE ROAD GUARD REMOVAL | LIN. FT. | 180 | 80 | 100 |
| * 642002 | SEEDING II | ACRE | 10 | .25 | .75 |
| * 644001 | SODDING | SQ. YD. | 59 | 53 | 6 |
| * X62837 | SP8CR TY A | LIN. FT. | 187.5 | 87.5 | 100 |
| * X60708 | CORRUGATED POLYETHYLENE TUBING PIPE DRAINS, 4 INCH | LIN. FT. | 30 | 10 | 20 |
| * X60709 | CORRUGATED POLYETHYLENE TUBING PIPE UNDERDRAINS, 4 INCH | LIN. FT. | 635 | 80 | 555 |
| * X04615 | 5 INCH X 9 INCH CHANNEL IRON | LIN. FT. | 182 | 80 | 100 |
| 513017 | FURNISHING STEEL PILES 12x74 | LIN. FT. | 48 | 48 | |
| 513019 | FURNISHING STEEL PILES 14x89 | LIN. FT. | 72 | 72 | |
| 513021 | FURNISHING STEEL PILES 14x117 | LIN. FT. | 84 | 34 | |
| * X04616 | PILE PLACEMENT | LIN. FT. | 712 | 348 | 364 |

* SEE SPECIAL PROVISIONS



RETAINING WALL West Slide



TYPE III BARRICADE AS SHOWN ON STD. 2298 WITH 2 FLASHERS PER EVERY 15 FEET OF LANE BEING CLOSED. THE SIGNS R11-1-4807 & C1-66-7236 ARE TO BE ERECTED ABOVE THE BARRICADE.

FOR INFORMATIONAL USE ONLY

DESIGNED BY J.M.L.
 DRAWN BY D.J.M.
 CHECKED BY M.S.W.

Farnsworth GROUP
 2709 Bluegrass Drive
 Bloomington, Illinois 61704
 309/853-5435, 309/853-1571 fax

FILE NO. 24-6772
 DATE 03-24-05
 SHEET NO. 27 OF 60

EXISTING PLANS
 IL ROUTE 71
 SOLDIER PILE RETAINING WALL
 F.A.P. ROUTE 627 - SEC. (1-DI-1
 LA SALLE COUNTY
 STATION 399+91.88 TO STATION 400+87.50
 STRUCTURE NO. 050-W001