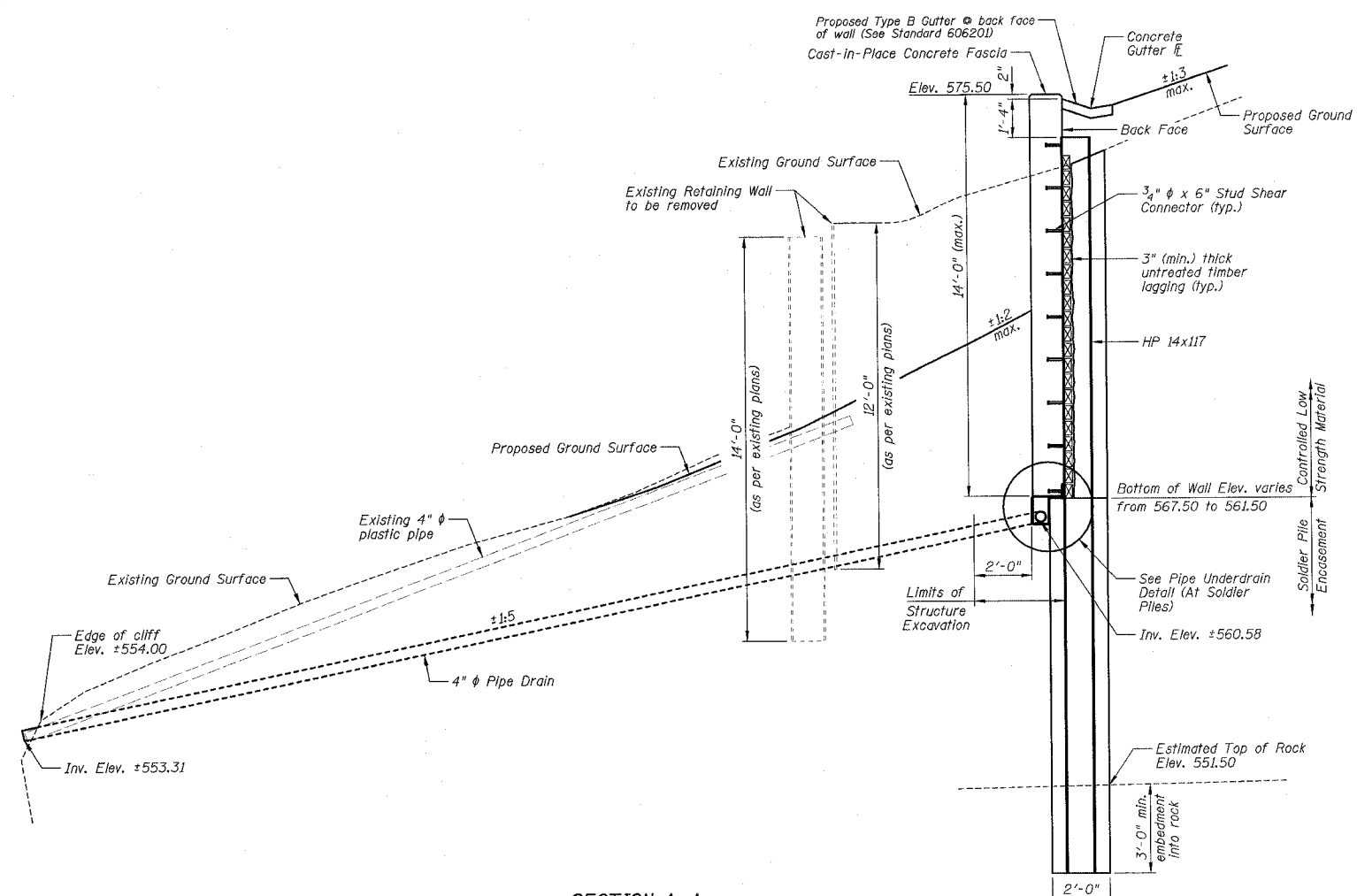
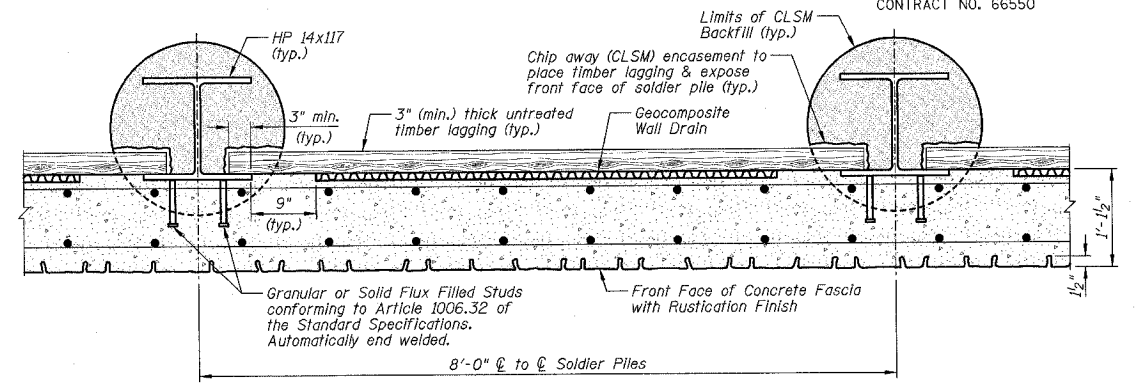


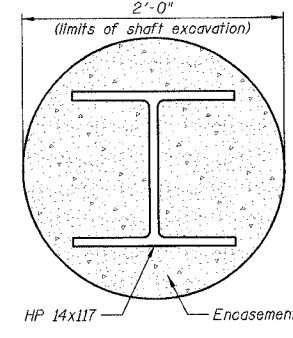
F.A.P. RTE.	SECTION	COUNTY	TOTAL SHEETS	SHEET NO.
627	(1-11-1)	LA SALLE	60	21
STA.		TO STA.		
FED. ROAD DIST. NO.		ILLINOIS FED. AID PROJECT		
CONTRACT NO. 66550		SHEET NO. B2		
OF 9 SHEETS				



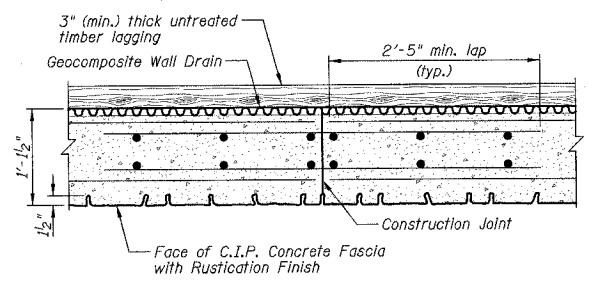
SECTION A-A



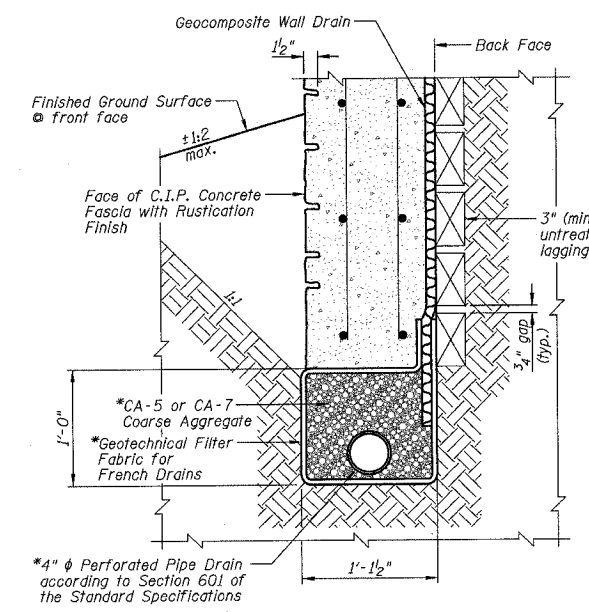
SECTION B-B



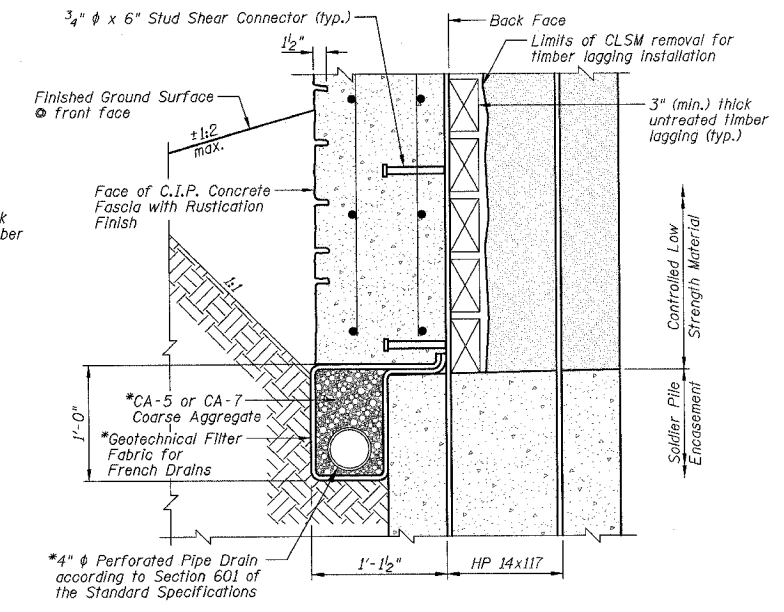
SECTION C-C



CONSTRUCTION JOINT DETAIL



BETWEEN SOLDIER PILES



AT SOLDIER PILES

PIPE UNDERDRAIN DETAIL
*Cost Included with "Pipe Underdrains for Structures".

GENERAL NOTES:

- 1.) Reinforcement bars shall conform to the requirements of AASHTO M31 or M322 Grade 60.
- 2.) See Sheets B5 thru B7 for soil boring and rock core data.
- 3.) All exposed edges shall be chamfered 3/4" except as noted.
- 4.) The Contractor is responsible for the design and performance of the Untreated Timber Lagging using no less than a 3" nominal rough-sawn thickness and timber with a minimum fb of 1000 psi. The design shall be approved by the Engineer.
- 5.) Stud Shear Connectors shall be 3/4" diameter x 6" granular or solid flux filled headed studs automatically end welded to the front flange in field.
- 6.) For information on the Drilled Soldier Pile Retaining Wall, see Special Provision "Drilled Soldier Pile Retaining Wall".
- 7.) All construction joints shall be bonded.
- 8.) See Sheet B4 for the limits of "Rustication Finish". See Special Provision "Rustication Finish" for additional information.
- 9.) All Cast-in-Place concrete shall be integrally colored. See the Special Provision "Colored Concrete - Cast-in-Place" for additional information.
- 10.) For backfilling of the retaining wall, see the Standard Specifications.
- 11.) See Roadway Plans for 4" diameter Pipe Drain quantity.
- 12.) C.I.P. denotes Cast-in-Place.
- 13.) The existing plans are provided for informational use only.

STATION 399+91.88 TO STATION 400+87.50
BUILT 200... BY
STATE OF ILLINOIS
F.A.P. RTE. 627 SECTION (1-DI-1)
F.A. PROJECT:
STR. NO. 050-W001

NAME PLATE DETAIL
See Standard 515001

TOTAL WALL BILL OF MATERIALS

ITEMS	UNITS	TOTAL
Removal of Existing Structures No. 1	Each	1
Structure Excavation	Cu Yd	135
Concrete Structures	Cu Yd	41.8
Rustication Finish	Sq Ft	980
Stud Shear Connectors	Each	166
Untreated Timber Lagging	Sq Ft	776
Furnishing Soldier Piles (HP 14x117)	Foot	281
Reinforcement Bars, Epoxy Coated	Pound	3900
Name Plates	Each	1
Geocomposite Wall Drain	Sq Yd	63
Pipe Underdrains for Structures 4"	Foot	88
Drilling and Setting Soldier Piles (in Rock)	Cu Ft	104
Drilling and Setting Soldier Piles (in Soil)	Cu Ft	794

NOTES:

- 1.) Work this sheet with Sheets B1, B3 and B4.
- 2.) For location of Sections A-A, B-B and C-C see Sheet B1.

GENERAL NOTES, BILL OF MATERIALS,
SECTIONS AND DETAILS
IL ROUTE 71
SOLDIER PILE RETAINING WALL
F.A.P. ROUTE 627 - SEC. (1-DI-1)
LA SALLE COUNTY
STATION 399+91.88 TO STATION 400+87.50
STRUCTURE NO. 050-W001

DESIGNED BY
J.M.L.

DRAWN BY
D.J.M.

CHECKED BY
M.S.W.

Farnsworth GROUP
2708 McGraw Drive
Bloomington, Illinois 61704
309/882-6636, 309/953-1871 fax

FILE NO.
24-6772

DATE
03-24-05

SHEET NO.
21 of 60