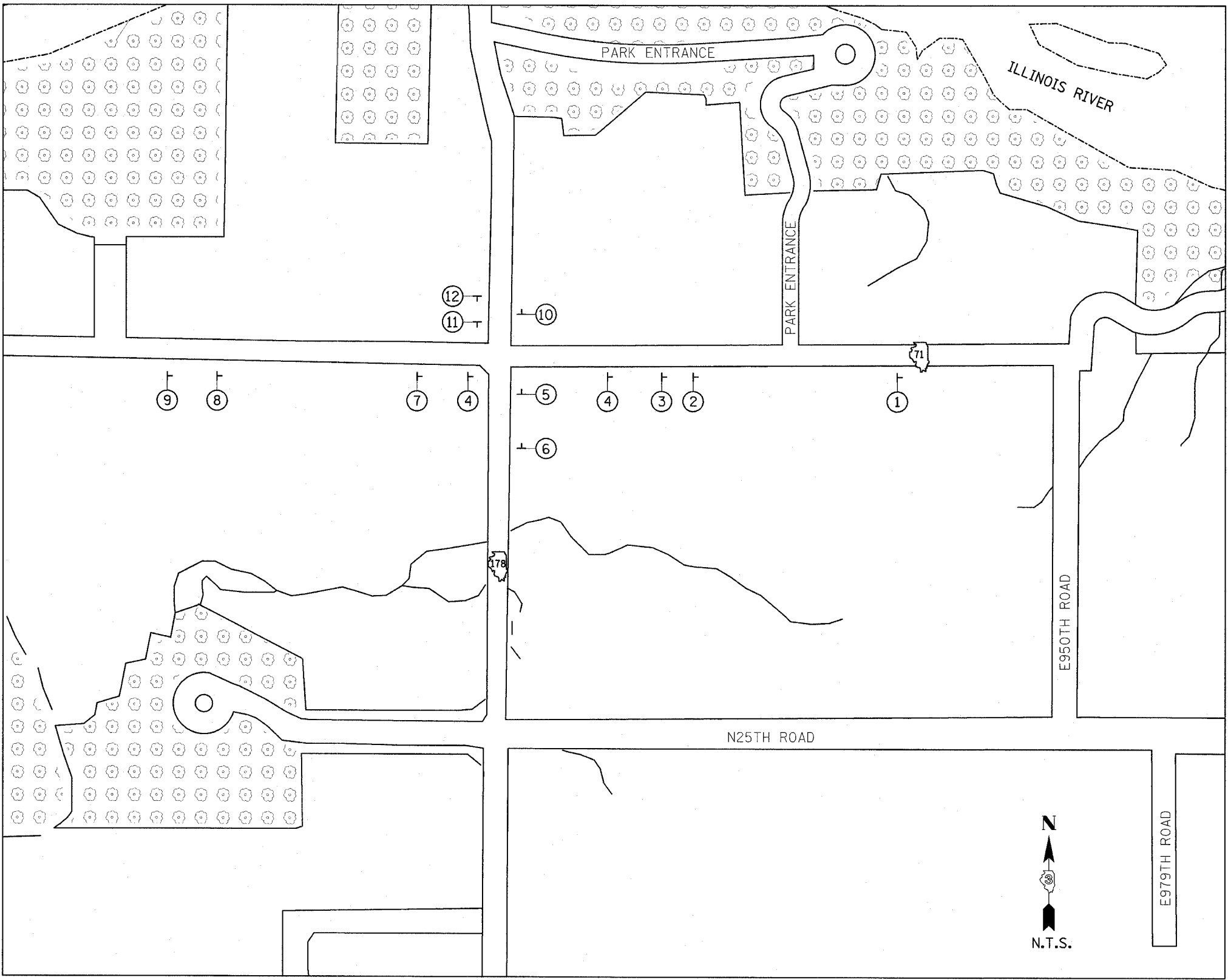


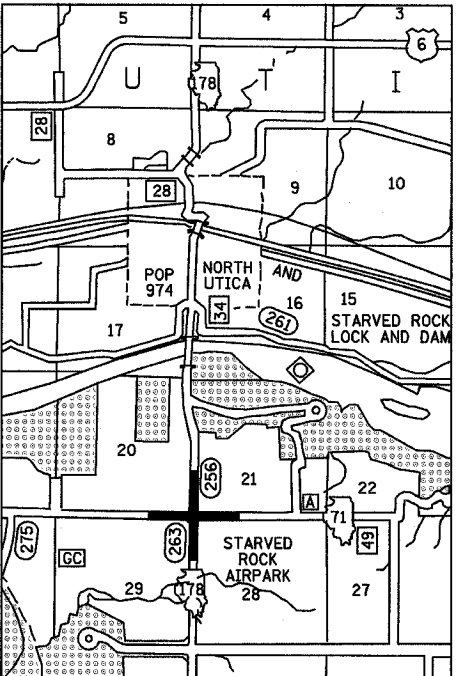
F.A.P. RTE.	SECTION	COUNTY	TOTAL SHEETS	SHEET NO.
627	(1-1)I-1	LA SALLE	60	13
STA.		TO STA.		
FED. ROAD DIST. NO.		ILLINOIS FED. AID PROJECT		
CONTRACT NO. 66550				

LEGEND

- XXXX TO BE COVERED
- FLASHING LIGHT
- ◇ 18"x8" ORANGE FLAG
- TT TYPE III BARRICADE
- DIRECTION ARROW CHANGE
- ① **ROAD CLOSED**
1/2 MILES AHEAD
LOCAL TRAFFIC ONLY
MI-1100 24x24
R11-3a 60x30
- ② **STARVED ROCK 1**
- ③ **STARVED ROCK 2**
- ④ **ROAD CLOSED**
1 1/2 MILES AHEAD
LOCAL TRAFFIC ONLY
MI-1100 24x24
R11-3a 60x30
- ⑤ **71**
- ⑥ **OGLESBY**
OTTAWA
- ⑦ **71**
DETOUR
M4-10 48x18
- ⑧ **DETOUR AHEAD**
W20-2 36x36
- ⑨ **ROAD CLOSED AHEAD**
W20-3 36x36
- ⑩ **DETOUR**
M4-8 24x12
MI-1100 24x24
- ⑪ **71**
- ⑫ **OTTAWA**
OGLESBY



JUNCTION IL 178 & IL 71



LOCATION MAP

DETOUR MAP

IL ROUTE 71
OVER TRIBUTARY TO ILLINOIS RIVER
F.A.P. ROUTE 627 - SEC. (1-1)I-1
LA SALLE COUNTY

GENERAL NOTES:

- 1.) ONLY SIGNS THAT ARE TO BE CHANGED OR ADDED ARE SHOWN ON THIS MAP.
- 2.) ALL SIGNS TO BE POST MOUNTED.

DESIGNED BY MSW	<p>Farnsworth GROUP 2709 McGraw Drive Bloomington, Illinois 61704 302/883-8426 302/883-1671 fax</p>	FILE NO. 24-6772
DRAWN BY DJM		DATE 03/24/05
CHECKED BY MSW		SHEET NO. 13 OF 60