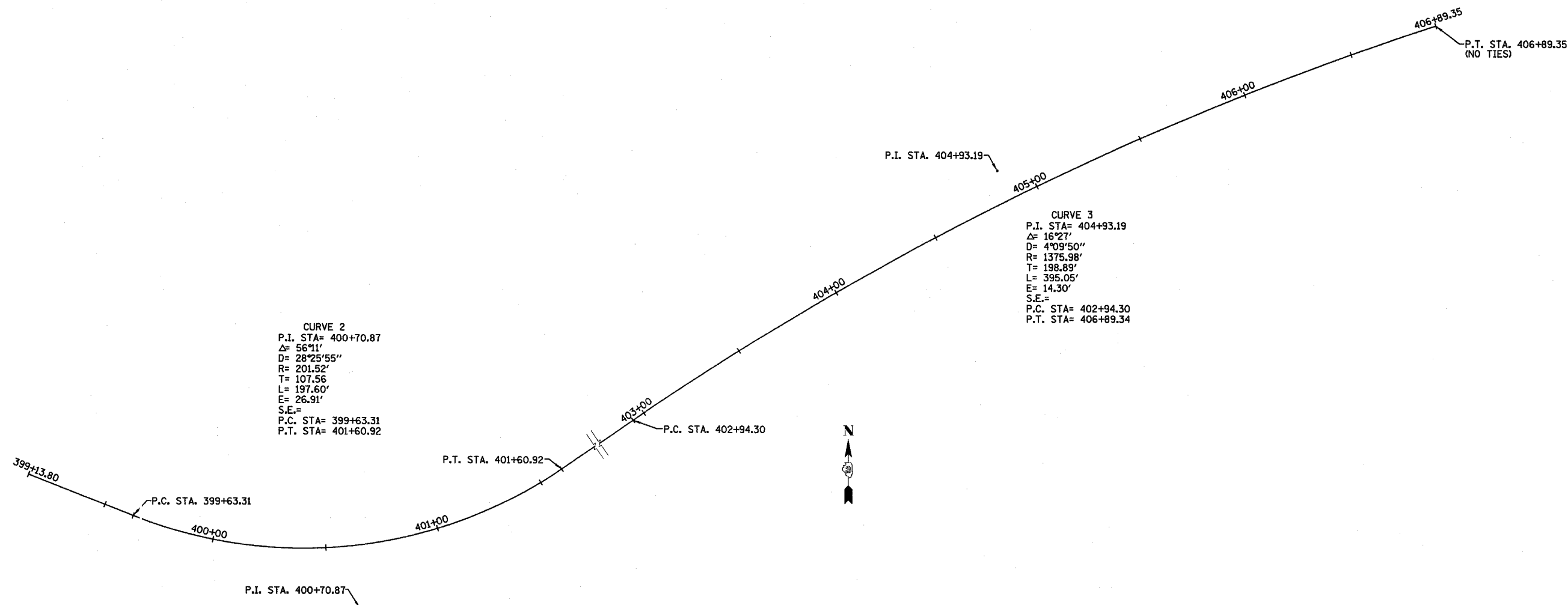
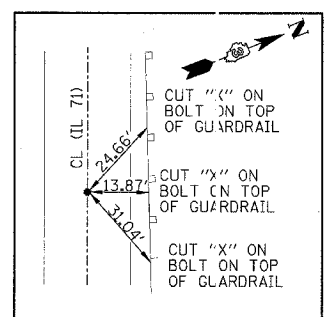


F.A.P. RYE.	SECTION	COUNTY	TOTAL SHEETS	SHEET NO.
627	(1-1)I-1	LA SALLE	60	8
STA.		TO STA.		
FED. ROAD DIST. NO.		ILLINOIS FED. AID PROJECT		
CONTRACT NO. 66550				

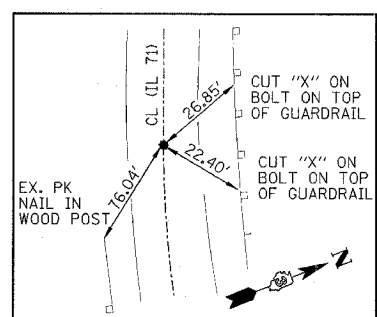


CURVE 2
P.I. STA= 400+70.87
 Δ = 56°11'
D= 28°25'55"
R= 201.52'
T= 107.56'
L= 197.60'
E= 26.91'
S.E.=
P.C. STA= 399+63.31
P.T. STA= 401+60.92

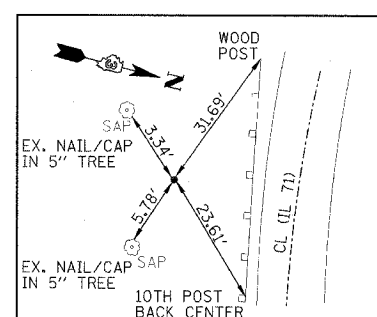
CURVE 3
P.I. STA= 404+93.19
 Δ = 16°27'
D= 4°09'50"
R= 1375.98'
T= 198.89'
L= 395.05'
E= 14.30'
S.E.=
P.C. STA= 402+94.30
P.T. STA= 406+89.34



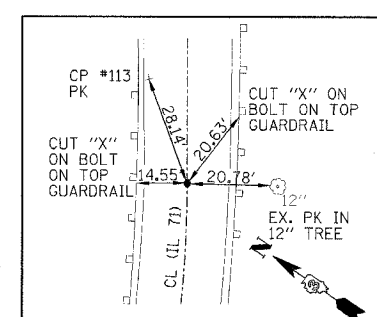
STA. 399+13.80, 0.00' LT
SPINDLE NAIL ON TANGENT
N=1692255.72
E=808085.76



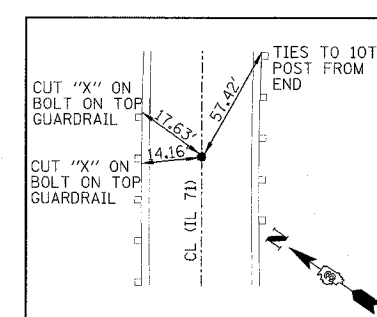
P.C. STA. 399+63.31, 0.00' LT
(CURVE #2) SPINDLE NAIL
N=1692237.391
E=808131.755



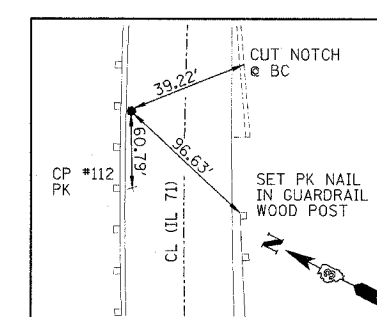
P.I. STA. 400+70.87, 26.91' RT
(CURVE #2) IR SET
N=1692197.570
E=808231.677



P.T. STA. 401+60.92, 0.00' LT
(CURVE #2) SPINDLE NAIL
N=1692258.425
E=808320.370



P.C. STA. 402+94.30, 0.00' LT
(CURVE #3) SPINDLE NAIL
N=1692333.888
E=808430.355



P.I. STA. 404+93.19, 14.30' LT
(CURVE #3) SPINDLE NAIL
N=1692446.414
E=808594.357

TRANSIT LINE LOCATION & TIES
STRUCTURES 050-W001, 050-C803
& 050-W002
STA. 399+50 TO STA. 405+50

IL ROUTE 71
OVER TRIBUTARY TO ILLINOIS RIVER
F.A.P. ROUTE 627 - SEC. (1-1)I-1
LA SALLE COUNTY

DESIGNED BY MSW	 2709 McGraw Drive Bloomington, Illinois 61704 309/863-8636 309/863-8771 fax	FILE NO. 24-6772
DRAWN BY DJM		DATE 03/24/05
CHECKED BY MSW		SHEET NO. 8 OF 60