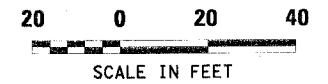
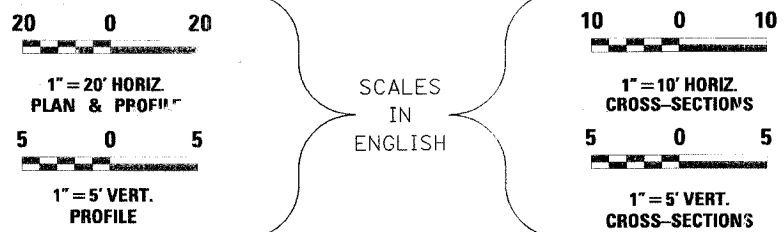


INDEX OF SHEETS

1	COVER SHEET
2	GENERAL NOTES
3-4	SUMMARY OF QUANTITIES
5	TYPICAL SECTIONS
6-7	SCHEDULE OF QUANTITIES
8	TRANSIT LINE LOCATION & TIES
9-11	PLAN & PROFILE SHEETS
12	STAKE
13-16	TOUR MAPS
17-18	LIMITS OF CONSTRUCTION, EROSION CONTROL AND TREE REMOVAL PLAN
19	LIMITS OF CONSTRUCTION AND EROSION CONTROL
20-28	S.N. 050-W001
29-34	S.N. 050-C803
35-40	S.N. 050-W003
41-49	S.N. 050-W002
50	DISTRICT DETAILS
51	DISTRICT DETAIL AND DETAILS
52-60	CROSS SECTIONS

STANDARDS

000001-04	602401	701006-02
001001	602406-01	701011-01
280001-02	604001-02	701201-02
442101-05	604006-02	701301-02
482001	606001-02	701306-01
515001-02	630001-05	701311-02
542401	630201-03	701326-02
601101	635006-02	702001-05
602301	635011-01	780001-01
602306	701001-01	781001-02



FULL SIZE PLANS HAVE BEEN PREPARED USING STANDARD ENGINEERING SCALES, REDUCED SIZED PLANS WILL NOT CONFORM TO STANDARD SCALES, IN MAKING MEASUREMENTS ON REDUCED PLANS, THE ABOVE SCALES MAY BE USED.

MICROFILMED \_\_\_\_\_  
 REEL NUMBER \_\_\_\_\_  
 AWARDED \_\_\_\_\_  
 RESIDENT ENGINEER \_\_\_\_\_  
 AS BUILT CHANGES WERE MADE \_\_\_\_\_  
 ON THE FOLLOWING SHEETS \_\_\_\_\_

JULIE 1-800-892-012

CENTRIC 3 NO. (815) 434-6131

ENGINEER: DANIEL J. DRAPER  
 F: PAT BRABOY  
 TOW: DEER PARK

CONTRACT NO. 66550

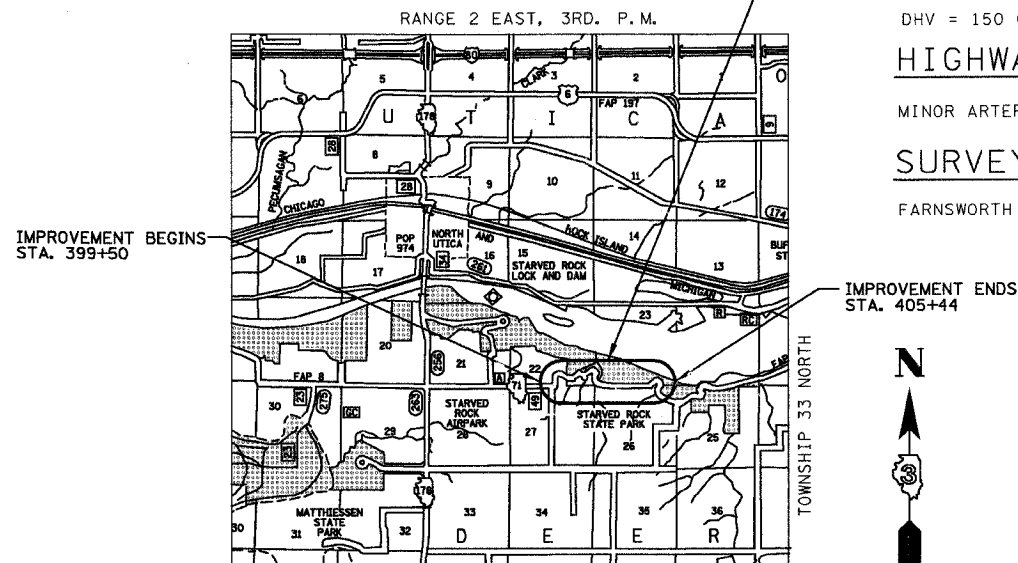
STATE OF ILLINOIS  
 DEPARTMENT OF TRANSPORTATION  
 DIVISION OF HIGHWAYS  
**PLANS FOR PROPOSED  
 FEDERAL AID HIGHWAY IMPROVEMENT**

F.A.P. RTE. 627 (IL RTE. 71)  
 SECTION (1-1)I-1  
 LaSALLE COUNTY  
 C-93-032-05  
 PROJECT F-0627(009)

ONE CULVERT REPAIR AND THREE RETAINING WALL REPLACEMENTS, 2.02 MILES EAST OF IL 178

- 1.) S.N. 050-W001 @ STA. 399+91.88 TO STA. 400+87.50
- 2.) S.N. 050-C803 @ STA. 402+22.00
- 3.) S.N. 050-W003 @ STA. 401+80.00 TO STA. 402+64.00
- 4.) S.N. 050-W002 @ STA. 403+94.31 TO STA. 405+31.53

NOTE: SEE PLANS FOR LOCATION AND DETAILS



LOCATION MAP



GROSS LENGTH OF IMPROVEMENT = 594 FEET = (0.11 MILES)  
 NET LENGTH OF IMPROVEMENT = 513 FEET = (0.10 MILES)

FAP RTE	SECTION	COUNTY	TOTAL SHEETS	SHEET NO.
627	(1-1)I-1	LaSALLE	60	1

PROJECT NO. C-93-032-99 CONTRACT NO. 66550  
 DISTRICT NO. 025-05



DESIGN DESIGNATION

POSTED ADVISORY SPEED LIMIT: 25 MPH  
 ADT = 1500 (2005) 1740 (2015)  
 % SU = 1.6%  
 % MU = 0.8%  
 DHV = 150 (2005) 174 (2015)

HIGHWAY CLASSIFICATION

MINOR ARTERIAL (RURAL)

SURVEY BOOK NOS.

FARNSWORTH GROUP, INC. BOOK 2490

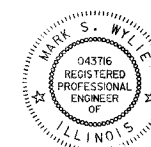
STATE OF ILLINOIS  
 DEPARTMENT OF TRANSPORTATION  
 DIVISION OF HIGHWAYS

SUBMITTED April 7, 2005

*Gregory Mounts*  
 DEPUTY DIRECTOR OF HIGHWAYS, REGION ENGINEER

May 13, 2005  
*Mike Hine*  
 ENGINEER OF DESIGN AND ENVIRONMENT

May 13, 2005  
*Victor Maden*  
 DIRECTOR, DIVISION OF HIGHWAYS



*Mark S. Wylie* Date 3/24/05  
 MARK S. WYLIE  
 ILLINOIS PROFESSIONAL ENGINEER  
 NO. 062-043716  
 EXPIRATION 11/30/05

**Farnsworth GROUP**  
 2700 McGraw Drive  
 Bloomington, Illinois 61704  
 309/663-2225, 309/663-1571 fax  
 PRINTED BY THE AUTHORITY OF THE STATE OF ILLINOIS