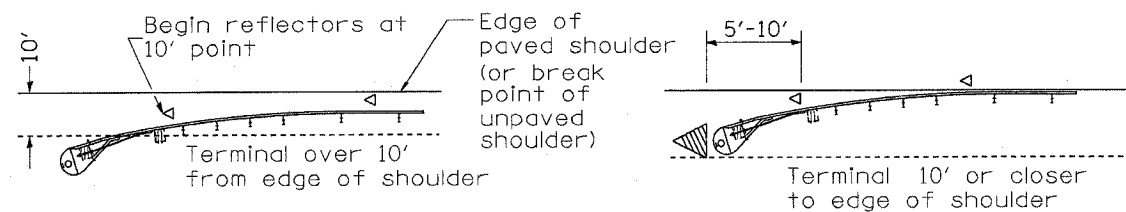


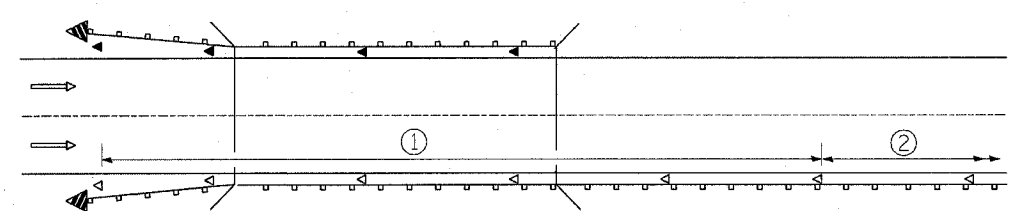
F.A.S. R.T.E.	SECTION	COUNTY	TOTAL SHEETS	SHEET NO.
317	(36,37) RS-2	IROQUOIS	13	12
STA.	TO STA.			
FED. ROAD DIST. NO.	ILLINOIS	FED. AID PROJECT		

CONTRACT #66338



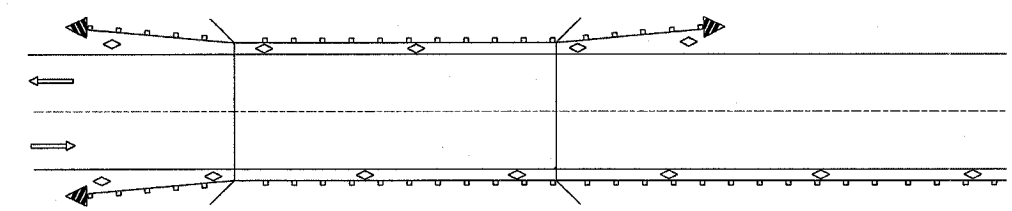
Omit terminal mark when terminal over 10' from edge of paved shoulder or break point of unpaved shoulder, or when terminal buried in blackslope.

TERMINAL MARKER PLACEMENT



- ① Spacing 80' max. for first 400' or curve spacing shown in Standard 635001, whichever is less (min. 4 reflectors regardless of length).
- ② After 400', transition to normal delineator spacing shown in Standard 635001, and continue as required.

ONE-WAY TRAFFIC

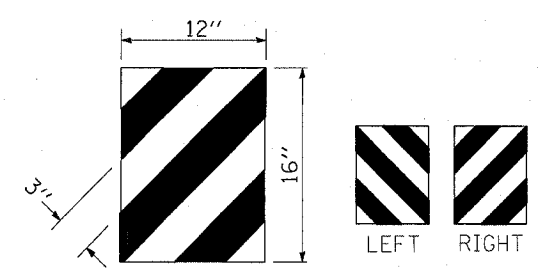


- ◁ Monodirectional silver
- ◄ Monodirectional amber
- ◇ Bidirectional silver
- ▤ Terminal Marker - Black/Yellow
Left or Right as appropriate

TWO-WAY TRAFFIC

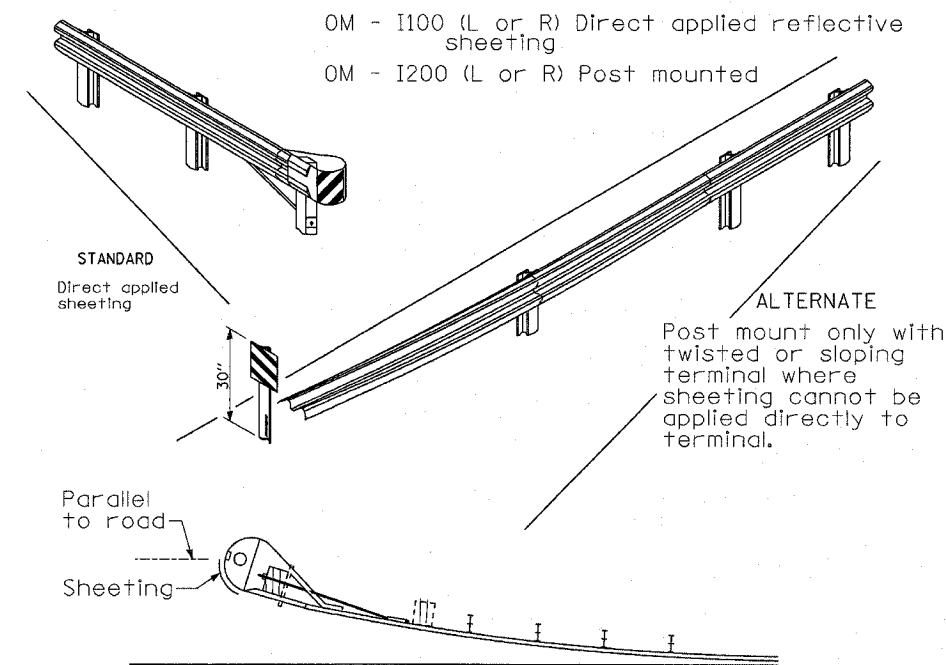
**GUARDRAIL / BARRIER WALL /
BRIDGE RAIL REFLECTORS**

**REFLECTOR AND TERMINAL
MARKER PLACEMENT**



TERMINAL MARKER DETAILS

Color: Black / Yellow reflectorized
 OM - I100 (L or R) Direct applied reflective sheeting
 OM - I200 (L or R) Post mounted



SHEETING POSITION

3/31/2005
c:\projects\ed02603\detail1.s.dgn