

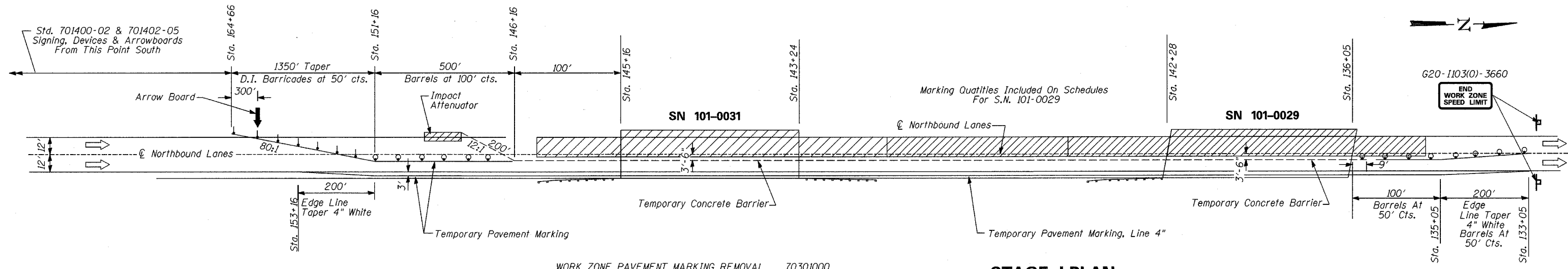
<b>TEMPORARY CONCRETE BARRIER</b> 70400100	<b>PAVEMENT MARKING REMOVAL</b> 78300105
Location: STA. 148+02 TO STA. 136+05	Location: RT. STA. 153+16 TO RT. STA. 133+05
Foot: 1197	Color: White
Total 1197 Foot	Foot: 2011
	Total 2011 Foot

**STATE OF ILLINOIS  
DEPARTMENT OF TRANSPORTATION**

<b>IMPACT ATTENUATORS (NON-REDIRECTIVE), TEST LEVEL 3</b> Z0030150
Location: STA. 148+16
Each: 1
Total 1 Each

ROUTE NO.	SECTION	COUNTY	DATE	SHEET
S.R.L.	* Winnebago	36	5	
F.A.L.				
FED. ROAD DIST. NO. 7	ILLINOIS	FED. AID PROJECT		

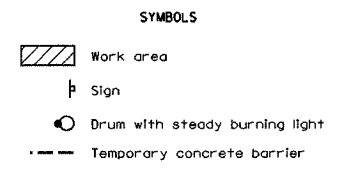
(5VB, 5HB, 1-2HB)M



<b>TEMPORARY PAVEMENT MARKING - LINE 4"</b> 70300220		
Location: LT. STA. 164+66 TO STA. 133+05	Color: Yellow	Foot: 3161
RT. STA. 153+16 TO RT. STA. 133+05	White	2011
Total 5172 Foot		

<b>WORK ZONE PAVEMENT MARKING REMOVAL</b> 70301000		
Location: LT. STA. 164+66 TO RT. STA. 146+16	Color: Yellow	Sq. Ft.: 617
RT. STA. 153+16 TO RT. STA. 145+16	White	267
RT. STA. 143+24 TO RT. STA. 142+28	White	32
RT. STA. 136+05 TO RT. STA. 133+05	White	100
RT. STA. 135+96 TO RT. STA. 133+05	Yellow	97
Total 1113 Sq. Ft.		

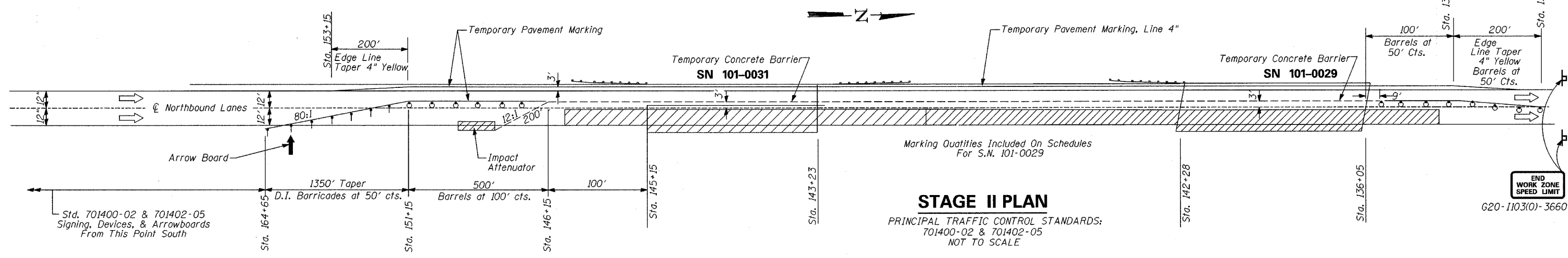
**STAGE I PLAN**  
PRINCIPAL TRAFFIC CONTROL STANDARDS:  
701400-02 & 701402-05  
NOT TO SCALE



<b>IMPACT ATTENUATORS, RELOCATE (NON-REDIRECTIVE), TEST LEVEL 3</b> Z0030350	
Location: STA. 148+16	Each: 1
Total 1 Each	

<b>WORK ZONE PAVEMENT MARKING REMOVAL</b> 70301000		
Location: LT. STA. 153+15 TO LT. STA. 133+05	Color: Yellow	Sq. Ft.: 670
RT. STA. 164+65 TO RT. STA. 133+05	White	1053
Total 1723 Sq.Ft.		

<b>RELOCATE TEMPORARY CONCRETE BARRIER</b> 70400200	
Location: STA. 148+02 TO STA. 136+05	Foot: 1197
Total 1197 Foot	



<b>PAVEMENT MARKING REMOVAL</b> 78300105		
Location: LT. STA. 153+15 TO LT. STA. 133+05	Color: Yellow	Foot: 2010
Total 2010 Foot		
<b>TEMPORARY PAVEMENT MARKING - LINE 4"</b> 70300220		
Location: LT. STA. 153+15 TO LT. STA. 133+05	Color: Yellow	Foot: 2010
RT. STA. 164+65 TO RT. STA. 133+05	White	3160
Total 5170 Foot		

<b>PERMANENT PAVEMENT MARKING - LINE 4"</b> 78007110		
Location: LT. STA. 153+15 TO LT. STA. 133+05	Color: Yellow	Foot: 2010
RT. STA. 153+16 TO RT. STA. 133+05	White	2011
STA. 146+16 TO STA. 135+05	White	278
Total 4299 Foot		

**STAGE II PLAN**  
PRINCIPAL TRAFFIC CONTROL STANDARDS:  
701400-02 & 701402-05  
NOT TO SCALE

DESIGNED
CHECKED
DRAWN
CHECKED

**TRAFFIC CONTROL PLAN**  
F.A.P. RTE. 303 & F.A.P. RTE 738  
(IL 251) OVER RAILROAD  
SECTION (5VB, 5HB, 1-2HB)M  
WINNEBAGO COUNTY  
SN 101-0029 & SN 101-0031