

64A27

| F.A.I. RTE. | SECTION | COUNTY | TOTAL SHEETS | SHEET NO. |
|-------------|---------|--------|--------------|-----------|
| 80 | * | BUREAU | 60 | 1 |

* SECTION (06-5, 06-6, 06-7, 06 & 50-8)M

STATE OF ILLINOIS
DEPARTMENT OF TRANSPORTATION
DIVISION OF HIGHWAYS

**PROPOSED
HIGHWAY PLANS**

FAI ROUTE 80 (I-80)
SECTION (06-5, 06-6, 06-7, 06 & 50-8)M
PROJECT IM-080-2(062)057
BUREAU COUNTY
C-92-054-05

FOR INDEX OF SHEETS, SEE SHEET NO. 2

FOR LIST OF STANDARDS, SEE SHEET NO. 2

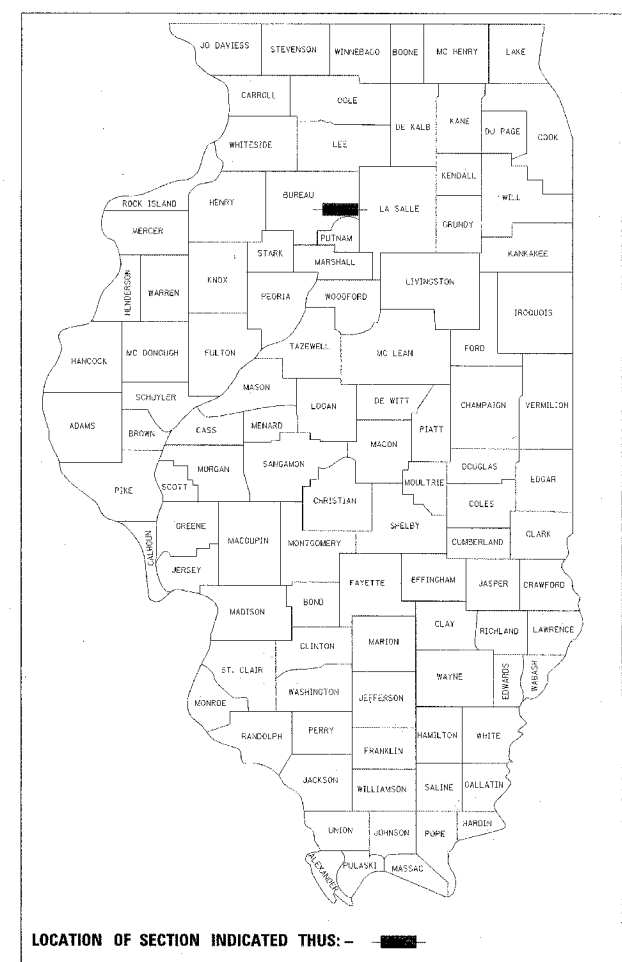
TRAFFIC VOLUMES:

I-80 WEST OF I-180
CURRENT ADT: 19,300 43% TRUCKS

I-80 EAST OF I-180
CURRENT ADT: 21,500 41% TRUCKS

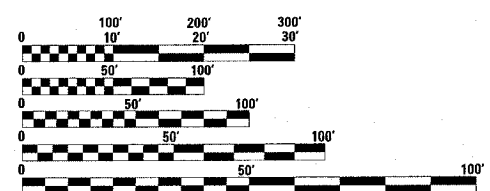
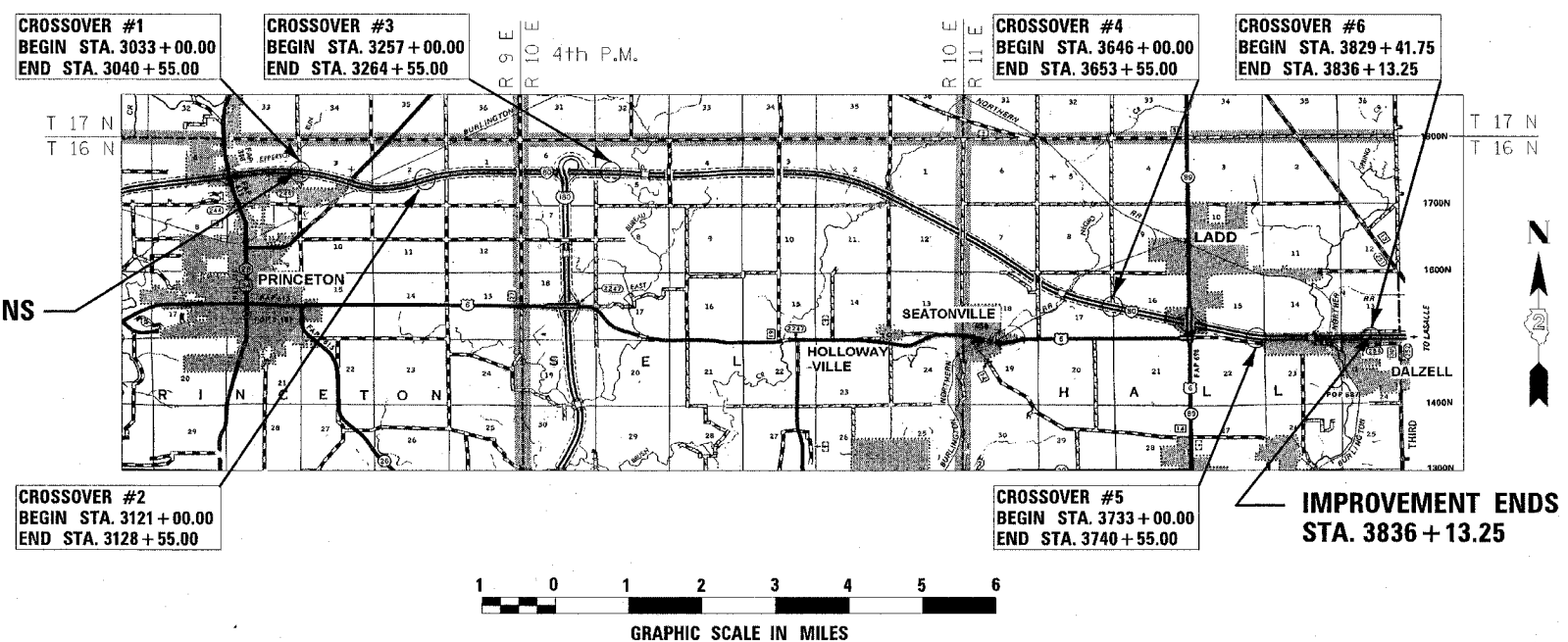
I-80 EAST OF IL RTE 89
CURRENT ADT: 25,100 38% TRUCKS

D-92-077-04



LOCATION OF SECTION INDICATED THUS: - [shaded box] -

MAURER STUTZ, INC.
ENGINEERS SURVEYORS
7615 N. HARKER DR. PEORIA, IL 61615
(309) 693-7615
ILLINOIS PROFESSIONAL DESIGN FIRM CORPORATION NUMBER 184-000177



FULL SIZE PLANS HAVE BEEN PREPARED USING STANDARD ENGINEERING SCALES. REDUCED SIZED PLANS WILL NOT CONFORM TO STANDARD SCALES. IN MAKING MEASUREMENTS ON REDUCED PLANS, THE ABOVE SCALES MAY BE USED.

J.U.L.I.E.
JOINT UTILITY LOCATION INFORMATION FOR EXCAVATION
1-800-892-0123

PRINCETON TOWNSHIP; SECTIONS: 2, 3, 4
SELBY TOWNSHIP; SECTION: 5
HALL TOWNSHIP; SECTIONS: 13, 15, 16, 17, 22, 24

CONTRACT NO. 64A27

GROSS PROJECT LENGTH: 80,313.25 FEET = 15.211 MILES
NET PROJECT LENGTH: 4,446.50 FEET = 0.842 MILES



RJA Anderson 4/12/05

ILLINOIS REGISTRATION NO. 062-044812
EXPIRATION DATE: 11/30/2005

STATE OF ILLINOIS
DEPARTMENT OF TRANSPORTATION
DIVISION OF HIGHWAYS

SUBMITTED *April 13, 2005*
Gregory R. Mountain DISTRICT ENGINEER

May 13, 2005
Mike Hine ENGINEER OF DESIGN AND ENVIRONMENT

May 13, 2005
Victor Madec DIRECTOR, DIVISION OF HIGHWAYS

PRINTED BY THE AUTHORITY
OF THE STATE OF ILLINOIS

DISTRICT 2, DIXON, IL

PROJECT ENGINEER: ROBERT WAGNER

CONSULTANT: MAURER-STUTZ INC. CONTACT: RICK ANDERSON (309) 693-7615

SQUAD LEADER: KYLE LORENZ (815) 284-5942