

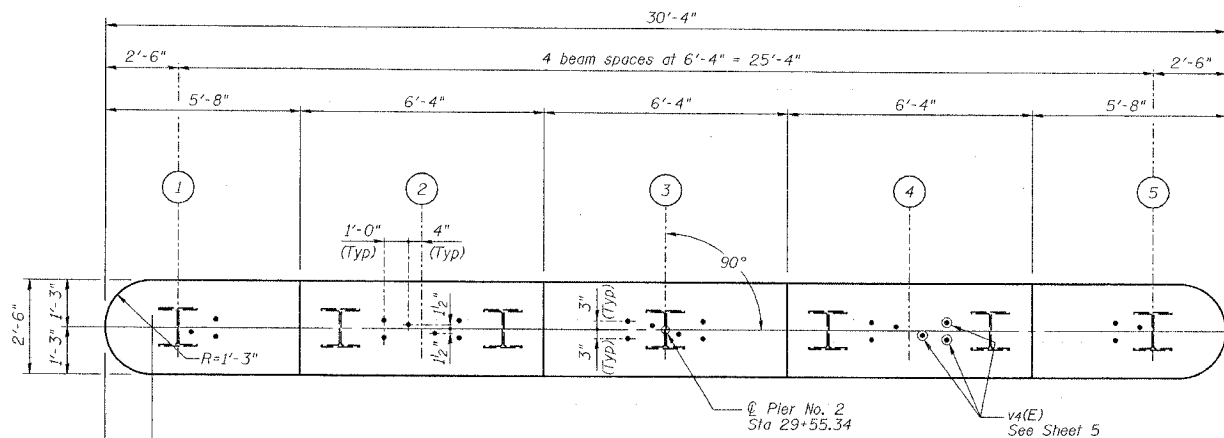
STATE OF ILLINOIS
DEPARTMENT OF TRANSPORTATION

Sheet No. 13
of 16 Sheets

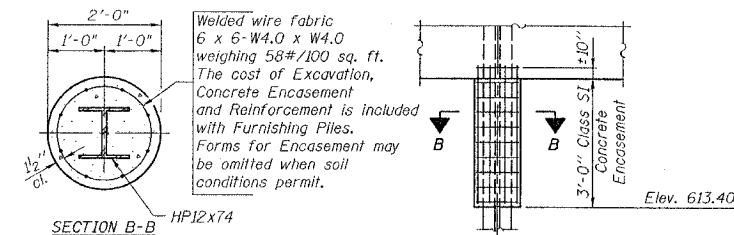
ROUTE NO.	SECTION	COUNTY	TOTAL SHEETS	SHEET NO.
SBI 88	103C-BR	BUREAU	51	24
FEDROAD DIST. NO.	ILLINOIS	PROJECT		

CONTRACT #64423

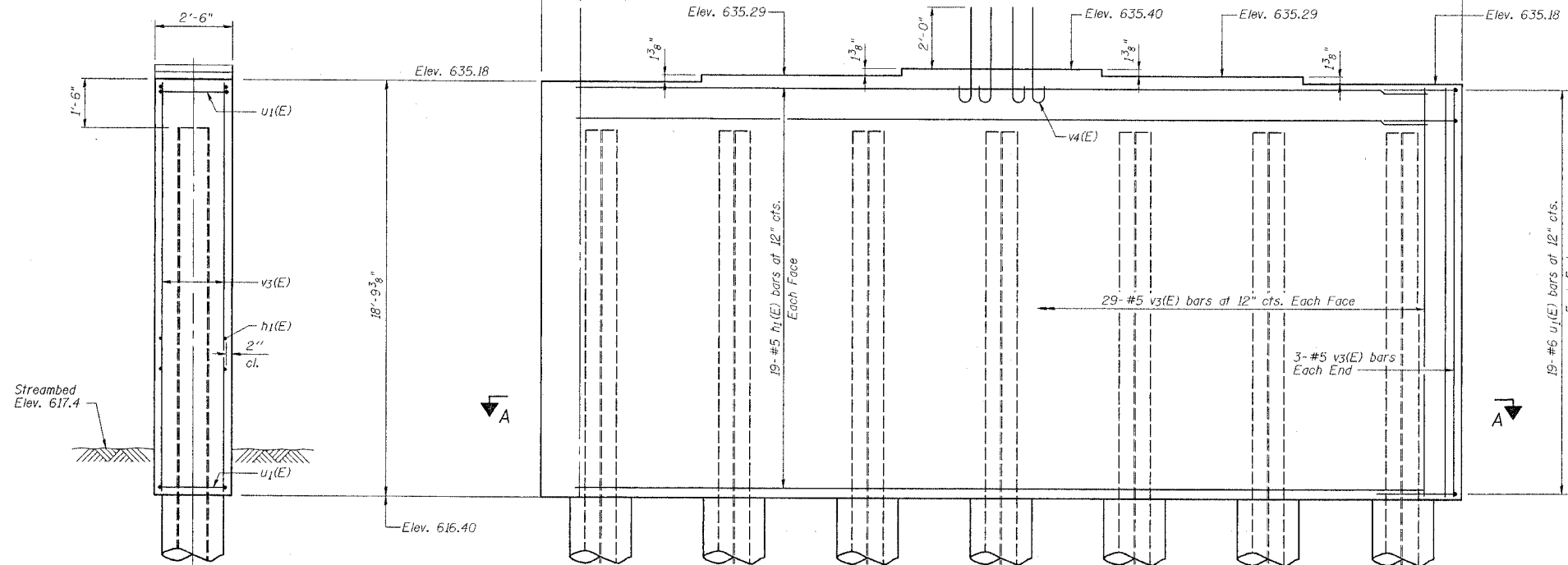
PILE DATA
Type: Steel HP12x74
Capacity: 60 T design driven to 90 T bearing
Est. Length: 100'
No. Req'd: 6 plus 1 test pile



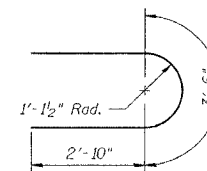
TOP PLAN



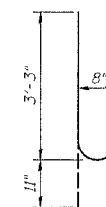
PILE ENCASEMENT DETAIL



ELEVATION
(Looking Up Station)



BAR u1(E)



BAR v4(E)

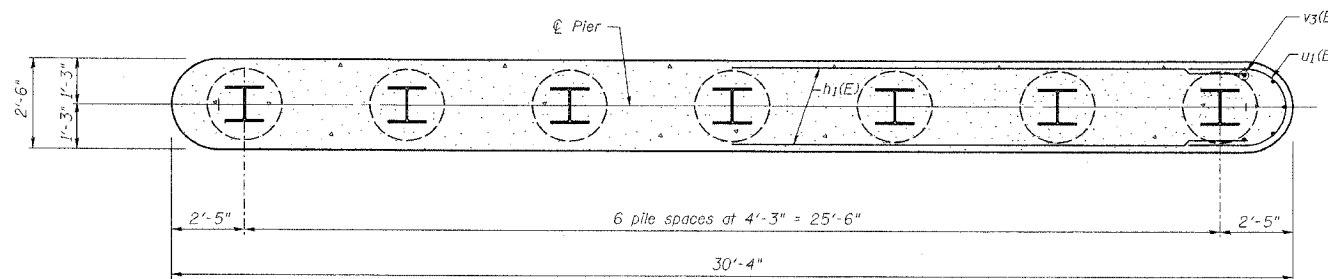
BILL OF MATERIAL

Bar	No.	Size	Length	Shape
h1(E)	38	#5	27'-10"	—
u1(E)	38	#6	9'-2"	U
v3(E)	64	#5	18'-6"	—
v4(E)	24	#8	4'-2"	U
Structure Excavation			Cu. Yd.	9
Concrete Structures			Cu. Yd.	52.1
Reinforcement Bars, Epoxy Coated			Pound	3130
Furnishing Steel Piles HP12x74			Foot	600
Driving Steel Piles			Foot	600
Test Pile Steel HP12x74			Each	1
Underwater Structure Excavation Protection - Location 2			Each	1

Reinforcement Bars designated (E) shall be epoxy coated.

NOTES

- Four steps monolithically with cap.
- Space reinforcement in cap to miss anchor bolts.



SECTION A-A

NEW BEDFORD ROAD OVER GREEN RIVER

PIER NO. 2 DETAILS

REVISIONS No. DATE INITIALS		STATE OF ILLINOIS DEPARTMENT OF TRANSPORTATION DIVISION OF HIGHWAYS		DRAWN BY DATE R King 4/04
		SBI 88 SPUR SECTION 103C-BR		CHECKED BY DATE CMV 4/04
		STA 29+25.34 SN 006-0163 BUREAU COUNTY		DATE BY DATE BWP 4/04
		HOMER L. CHASTAIN & ASSOCIATES, LLP CONSULTING ENGINEERS 184-00397		BOOK NUMBER PROJECT NO. 4858-1
				SHEET NO.