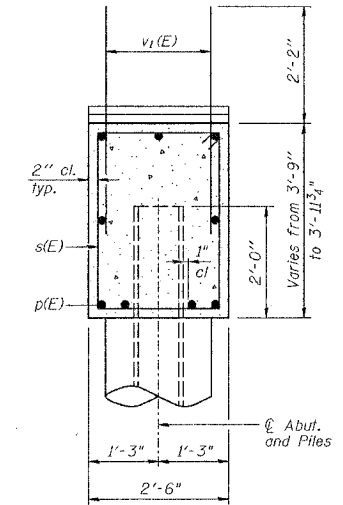
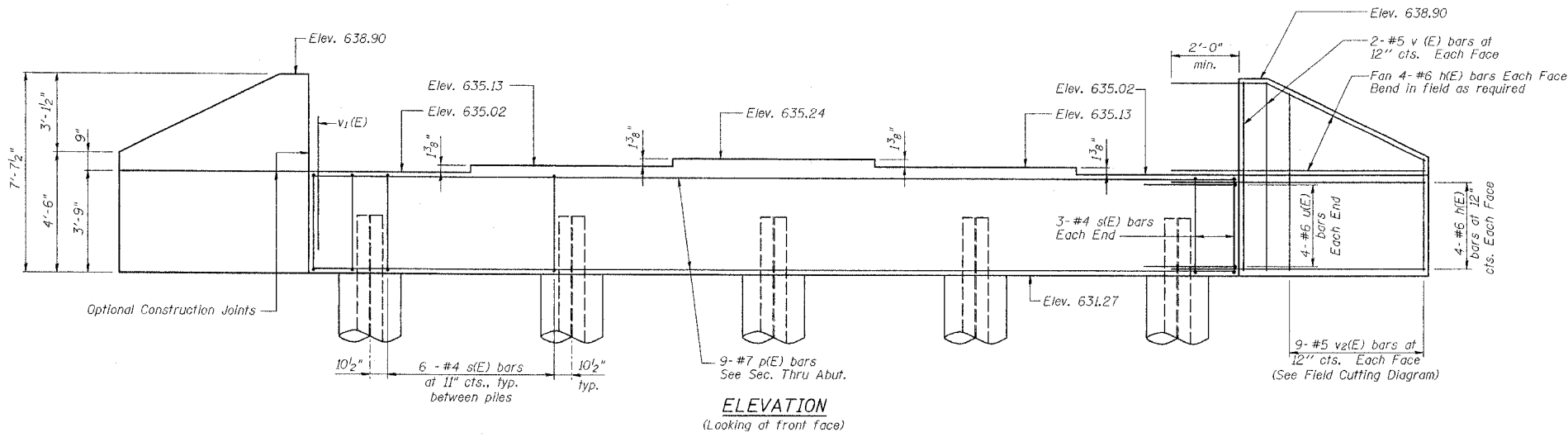


STATE OF ILLINOIS
DEPARTMENT OF TRANSPORTATION

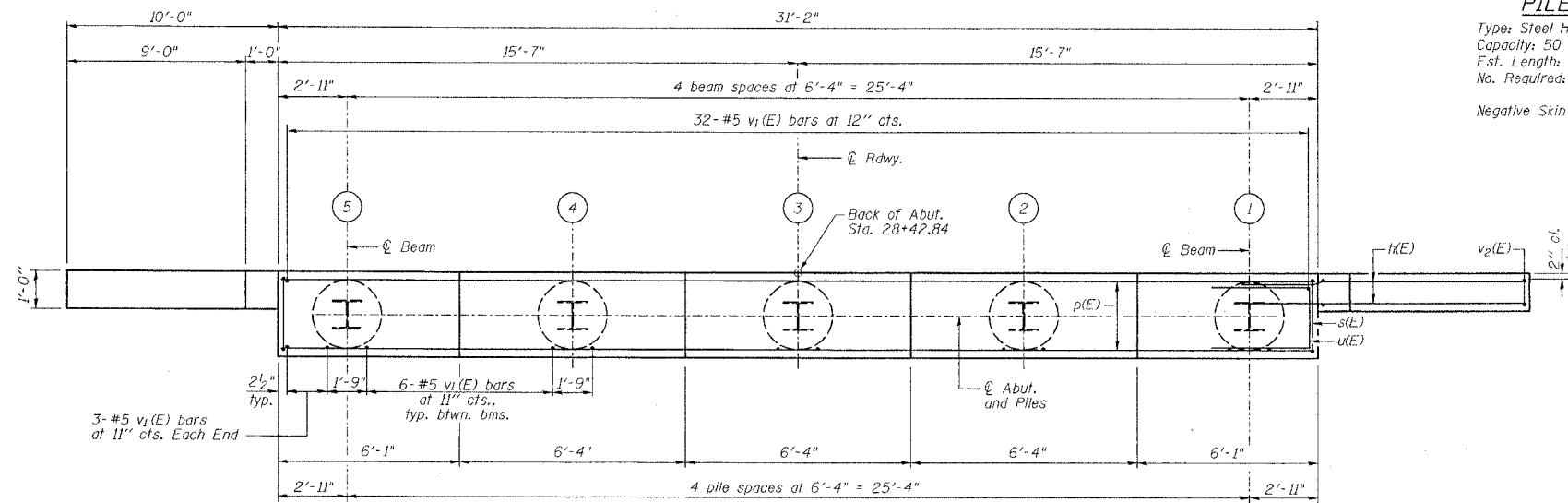
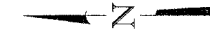
Sheet No. 10
of 16 Sheets

ROUTE NO.	SECTION	COUNTY	TOTAL SHEETS	SHEET NO.
SBI 88	103C-BR	BUREAU	51	21
FED. ROAD DIST. NO.	LLINGS	PROJECT	CONTRACT #64423	



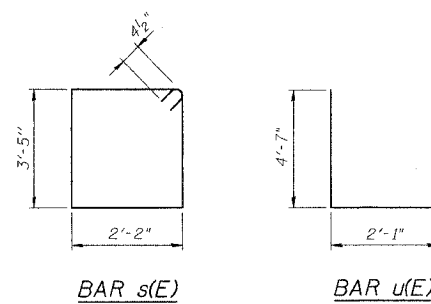
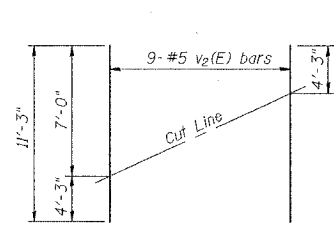
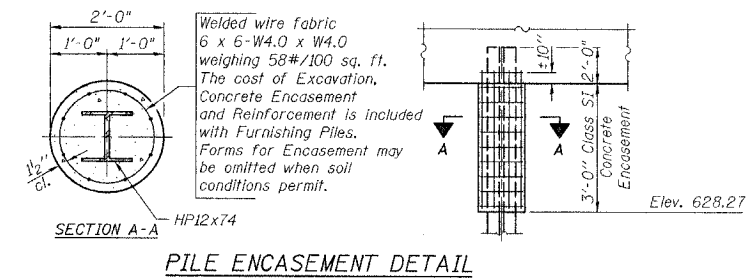
PILE DATA

Type: Steel HP 12x74
Capacity: 50 T design driven to 87 T bearing
Est. Length: 87'
No. Required: 4 plus 1 test pile
Negative Skin Friction Allowance = 12 T



BILL OF MATERIAL

Bar	No.	Size	Length	Shape
h(E)	32	#6	12'-4"	—
p(E)	9	#7	30'-10"	—
s(E)	30	#4	11'-11"	⊠
u(E)	8	#6	11'-3"	⊠
v(E)	8	#5	7'-4"	—
v ₁ (E)	62	#5	4'-4"	—
v ₂ (E)	18	#5	11'-3"	—
Concrete Structures	Cu. Yd.	13.8		
Reinforcement Bars, Epoxy Coated	Pound	2090		
Structure Excavation	Cu. Yd.	87		
Test Pile Steel HP12x74	Each	1		
Furnishing Steel Piles HP12x74	Foot	348		
Driving Steel Piles	Foot	348		



NOTES

Pour steps monolithically with cap.
Reinforcement bars designated (E) shall be epoxy coated.

NEW BEDFORD ROAD OVER GREEN RIVER

EAST ABUTMENT DETAILS

REVISIONS		STATE OF ILLINOIS DEPARTMENT OF TRANSPORTATION DIVISION OF HIGHWAYS		DRAWN BY DATE R King 4/04	
NO.	DATE	INITIALS	DATE	CHECKED BY	DATE
1				CMV	4/04
2					
3					
4					
5					
6					
7					
8					
9					
10					
11					
12					

SBI 88 SPUR	SECTION 103C-BR	PROJECT NO. 4858-1
STA 29+25.34	BUREAU COUNTY	SHEET NO.
HOMER L. CHASTAIN & ASSOCIATES, LLP CONSULTING ENGINEERS 184-001397		