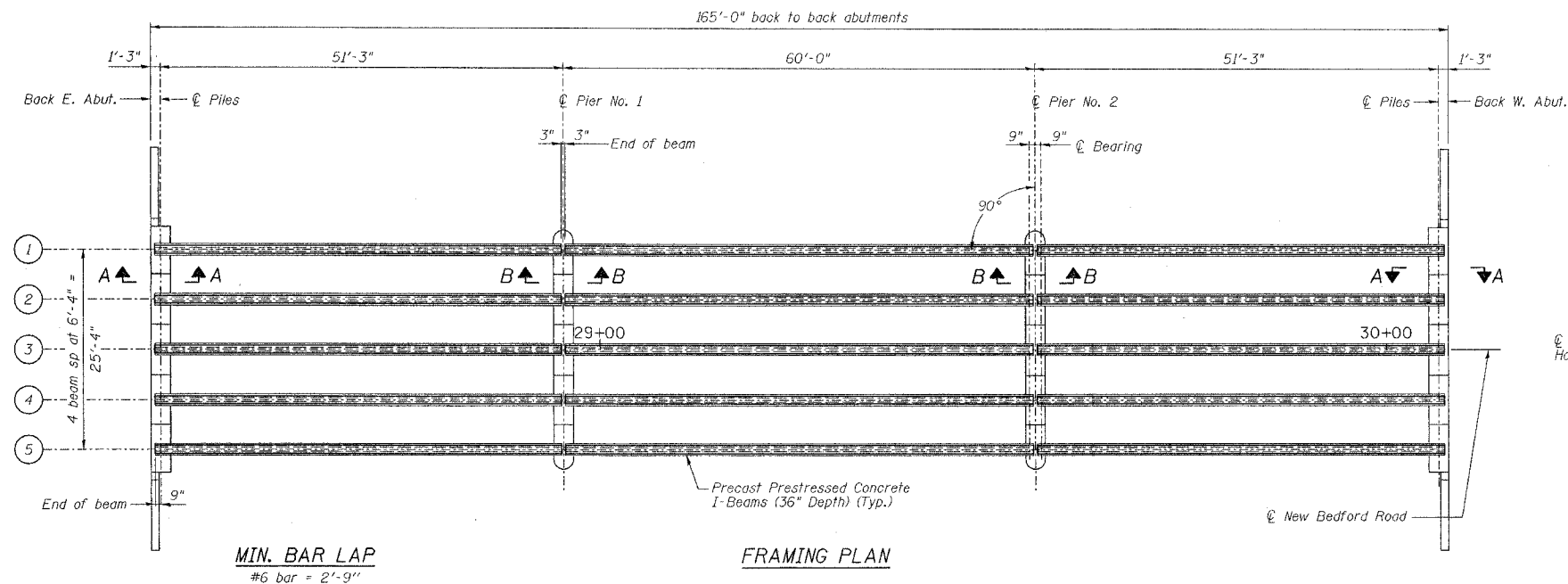


STATE OF ILLINOIS  
DEPARTMENT OF TRANSPORTATION

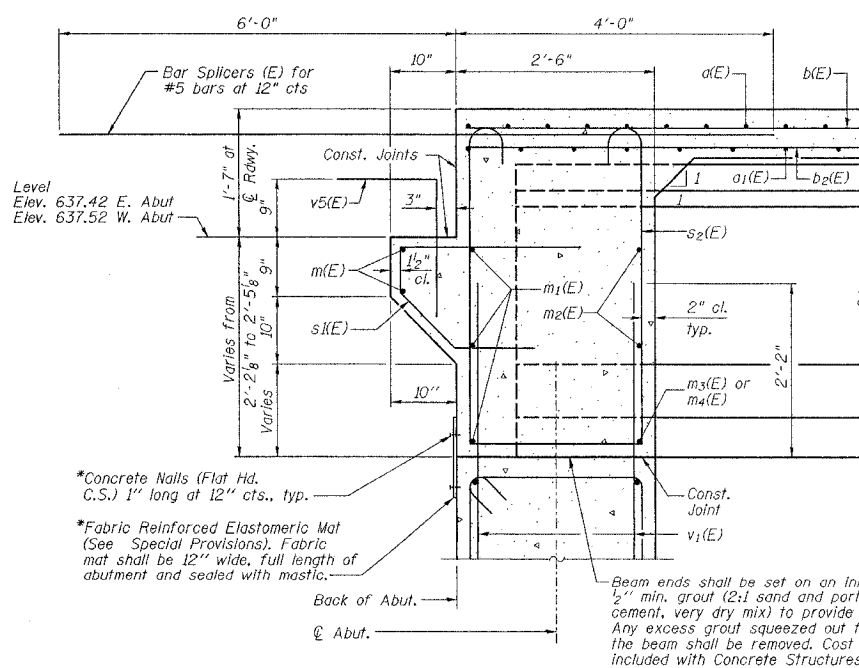
Sheet No. 5  
of 16 Sheets

ROUTE NO.	SECTION	COUNTY	TOTAL SHEETS	SHEET NO.
SBI 88	103C-BR	BUREAU	51	16
FEDERAL DIST. NO.	ILLINOIS	PROJECT		

CONTRACT #64423

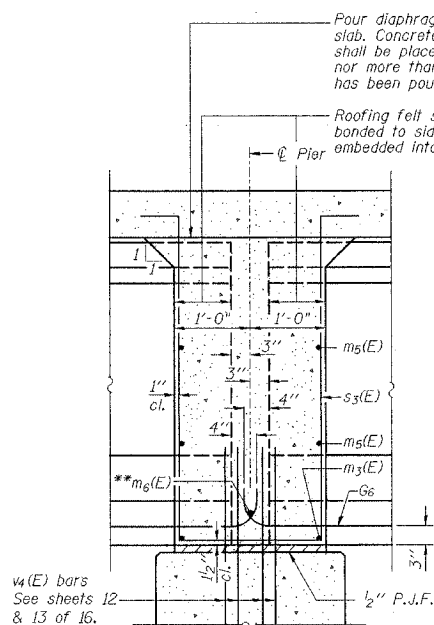


FRAMING PLAN



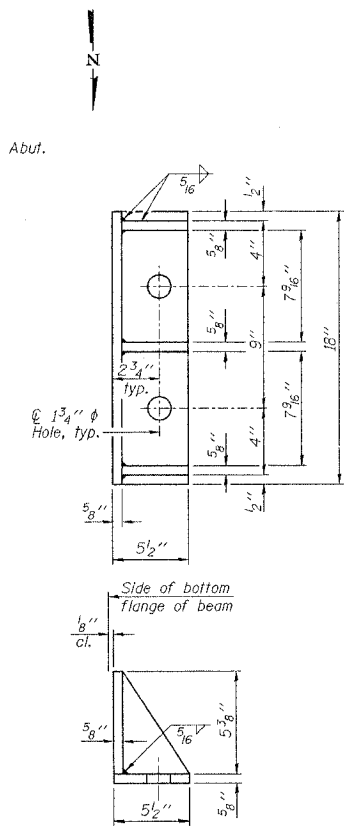
SECTION A-A

\*Cost included with Concrete Structures.



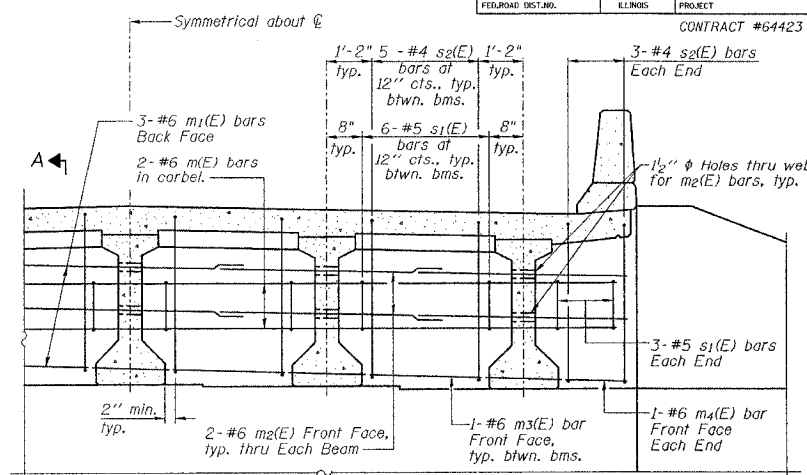
SECTION B-B

Dimensions along  $\bar{C}$  of beam, except as shown.

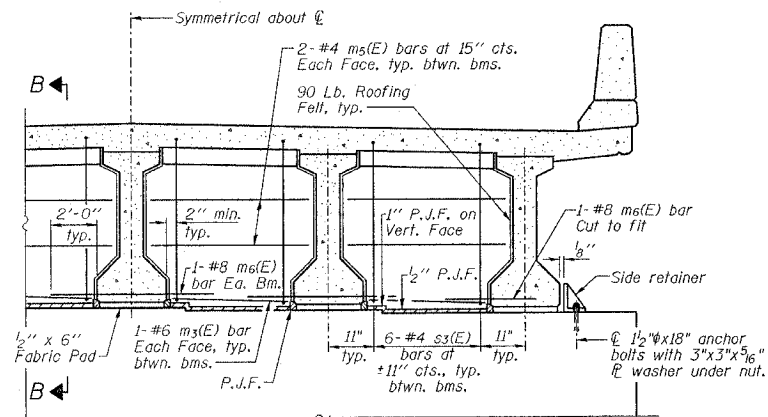


SIDE RETAINER

Equivalent rolled angle with stiffeners will be allowed in lieu of welded plates.



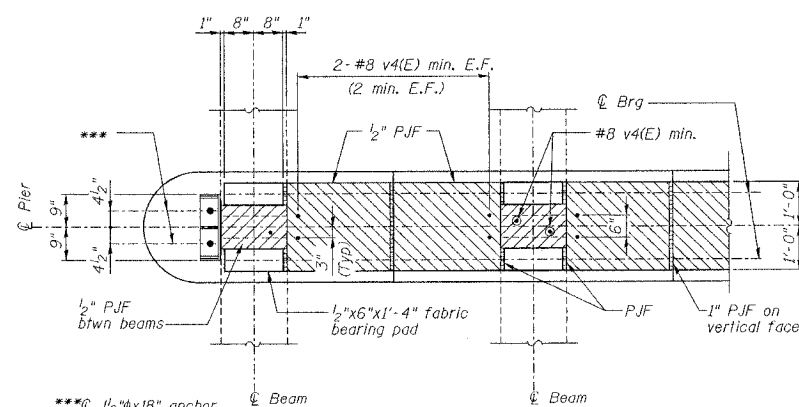
DIAPHRAGM ELEVATION AT ABUTMENT



DIAPHRAGM AT PIER

Notes:

- Reinforcement bars in diaphragm are billed with superstructure on sheet 6 of 16.
- Concrete in diaphragm is included with Concrete Superstructure on sheet 6 of 16.
- Cost of 90 Lb. roofing felt is included with Concrete Superstructure.
- The side retainer shall be galvanized after shop fabrication according to AASHTO M 111 and ASTM A 385. Cost of side retainer and anchor bolts shall be included with Concrete Structures.
- See sheet 9 of 16 for anchor bolt details.
- For details of bars s1(E), s2(E) and s3(E) see sheet 6 of 16. Spacing for these bars shall be at right angles to the beams.



PLAN AT PIER

(Showing bearing pad and P.J.F. details)

NEW BEDFORD ROAD OVER GREEN RIVER

SUPERSTRUCTURE DETAILS

REVISIONS		STATE OF ILLINOIS DEPARTMENT OF TRANSPORTATION DIVISION OF HIGHWAYS		DRAWN BY DATE R King 4/04	
1	DATE	INITIALS		CHECKED BY DATE CMW 4/04	
2				DATE BY DATE CWC 4/04	
3				BOOK NUMBER	
4					
5					
6					
7					
8					
9					
10					
11					
12					