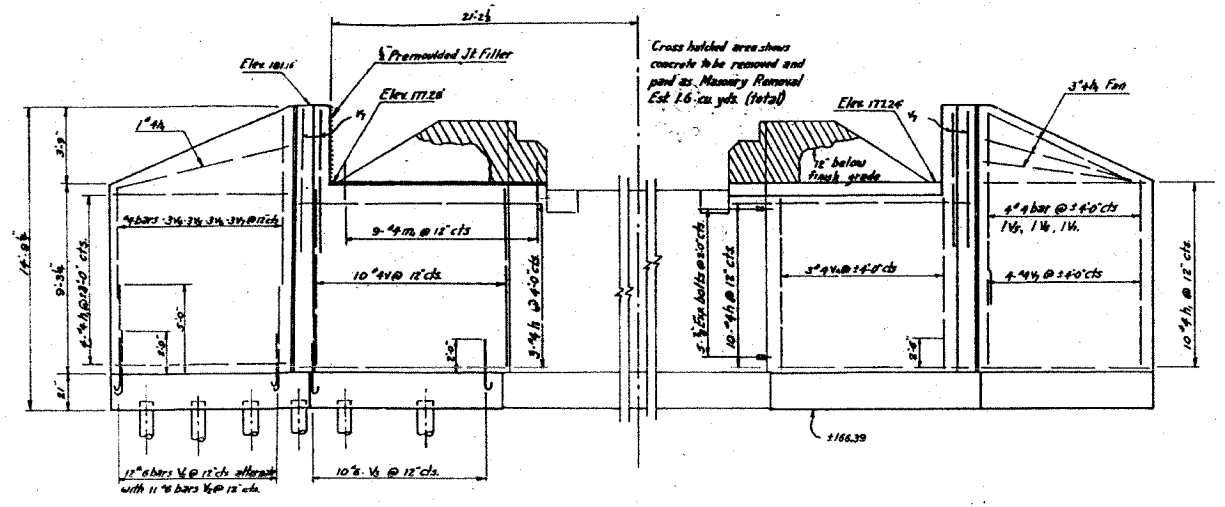


FOR INFORMATION ONLY

STATE OF ILLINOIS
DEPARTMENT OF PUBLIC WORKS & BUILDINGS
DIVISION OF HIGHWAYS

ROUTE NO.	SECTION	COUNTY	TOTAL SHEETS	SHEET NO.
105 BR	105 BY	Whiteside	9	8
SHEET NO. 3				
3 SHEETS.				



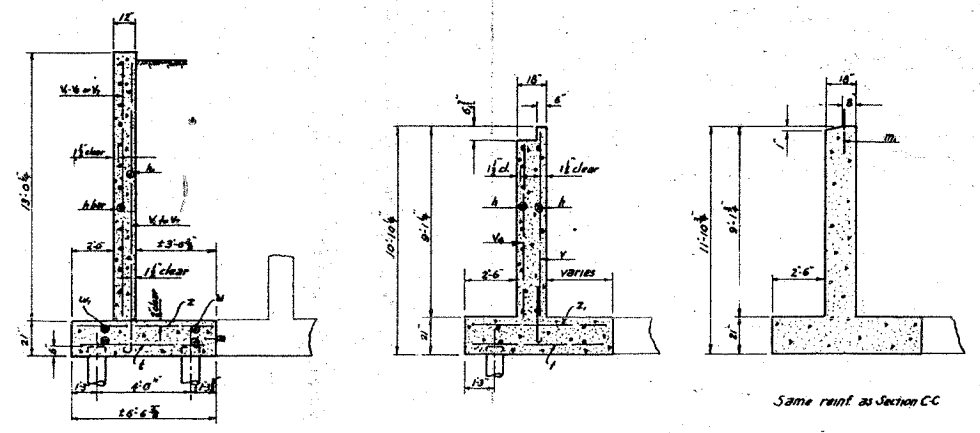
REINE BACK FACE

Elevation as seen on West Abut.

REINE FRONT FACE

Elevation as seen on East Abut.

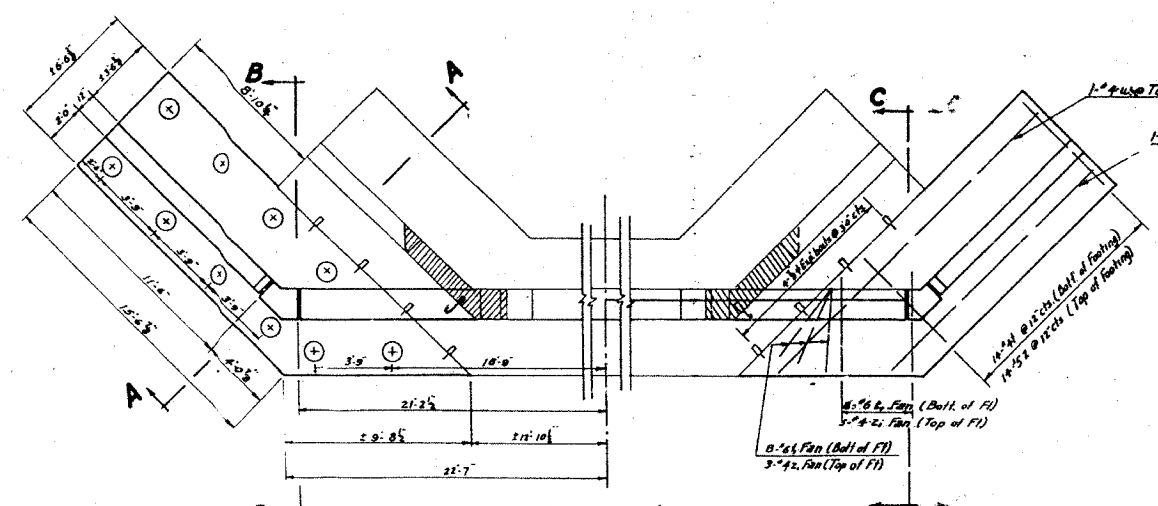
ELEVATION



SEC. AA

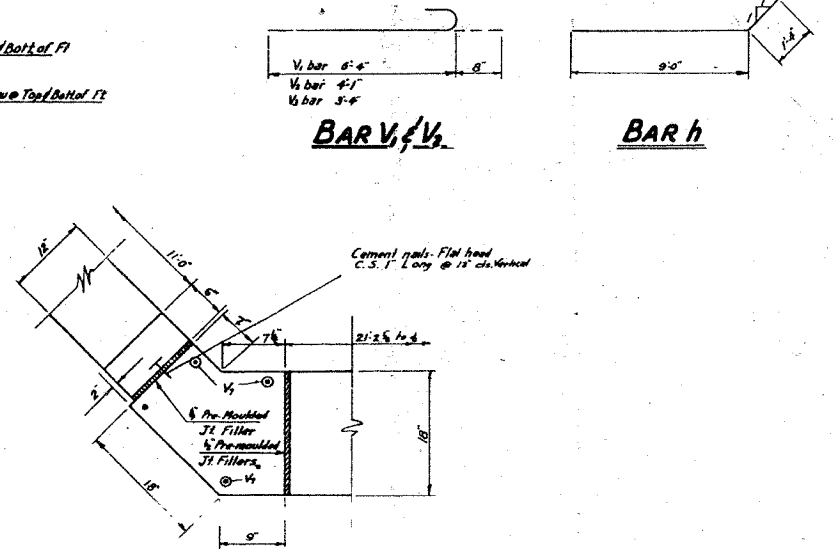
SEC. CC

SEC. BB



PLAN

American Double Unit, Exp. Bolt or Equal



CORNER DETAIL

FILE DATA

12' Untreated Piles
Est. Length 20.00
Min. Capacity - 20 Tons
No. Required - 40

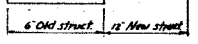
**BILL OF MATERIALS
2 ABUTMENTS**

Bars	No.	Size	Length	Shape
V	40	4	7'-0"	U
V	44	6	7'-0"	U
V	44	6	4'-9"	U
V	40	6	4'-0"	U
V	24	4	8'-6"	U
V	16	4	7'-6"	U
V	16	4	6'-9"	U
V	52	4	5'-0"	U
f	56	4	6'-3"	U
h	56	6	11'-6"	U
Z	56	5	6'-3"	U
Z	32	4	4'-6"	U
h	52	4	10'-4"	U
h	72	4	11'-0"	U
w	8	4	18'-3"	U
w	8	4	16'-0"	U
m	18	4	5'-0"	U
Class x Concrete				Cu. yds. 71.4
Reinf. Bars				lbs. 3950
Expansion Bolts				Each 36
Masonry Removal				Cu. yds. 2.0
Untreated Timber Piles				Lin. Ft. 780
Test Piles				Each One

D. SIGNED: Edward M. France
CHECKED: George P. Pender
DR. IN: E. M. F.
C. ED: [Signature]

EXAMINED: [Signature]
PASSED: [Signature]
APPROVED: [Signature]

DETAIL OF EXPANSION BOLT



**ABUTMENTS
SBI RT 86 SEC 105 BY
WHITESIDE COUNTY
STA. 229+82**