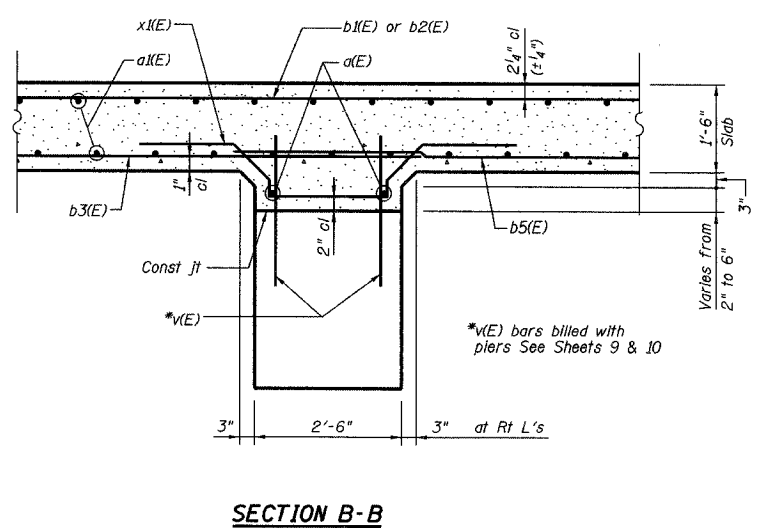
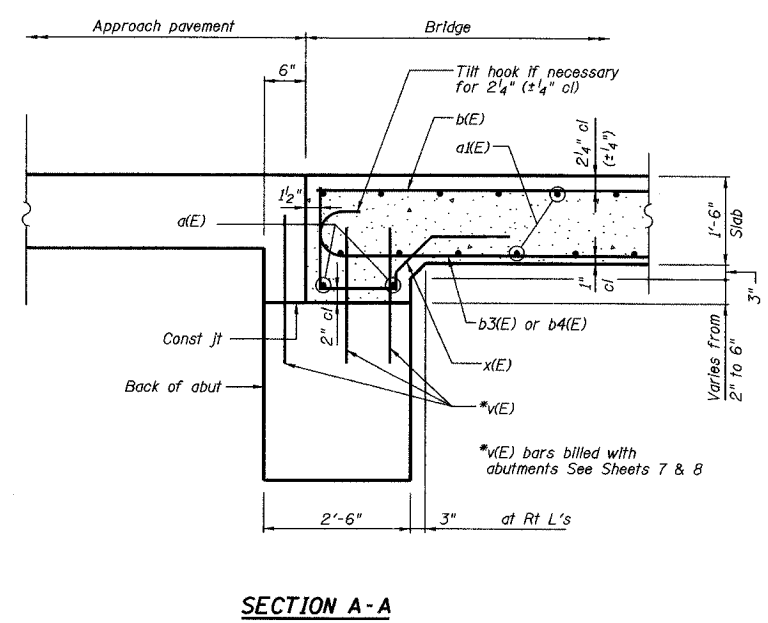
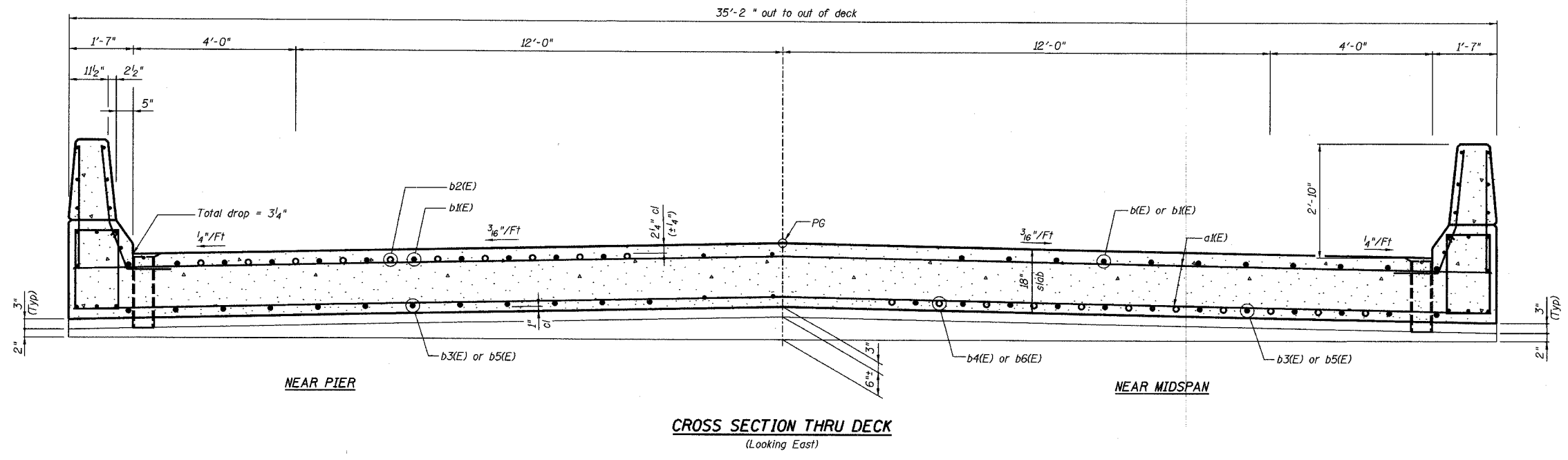


STATE OF ILLINOIS
DEPARTMENT OF TRANSPORTATION

Sheet No. 5
of 11 Sheets

ROUTE NO.	SECTION	COUNTY	TOTAL SHEETS	SHEET NO.
FAS 1197	105BR-2	WHITESIDE	59	20
FED. ROAD DIST. NO.	ILLINOIS	PROJECT	CONTRACT 64421	



NOTES:
See Sheet No. 6 of 11 for Superstructure Details, parapet reinforcing and Bill of Material.
Reinforcement bars designated (E) shall be epoxy coated.
Bars indicated thus 6x3-#5 etc indicates 6 lines of bars with 3 lengths per line.
See Sheet No. 1 of 11 for floor drain spacing.
Space reinforcement bars to miss floor drains.

REVISIONS		SUPERSTRUCTURE DETAILS	
No.	DATE	INITIALS	
1			
2			
3			
4			
5			
6			
7			
8			
9			
10			
11			
12			

MOLINE ROAD OVER UNNAMED TRIBUTARY TO ROCK RIVER		DRAWN BY DATE R King 8/04
FAS ROUTE 1197 SECTION 105BR-2		CHECKED BY DATE CMV 8/04
STA 229+67.50 SN 098-0110		QA/QC BY DATE CWC 8/04
WHITESIDE COUNTY		BOOK NUMBER
HOMER L. CHASTAIN & ASSOCIATES, LLP CONSULTING ENGINEERS 184-001397		PROJECT NO. 4858-3
		SHEET NO.