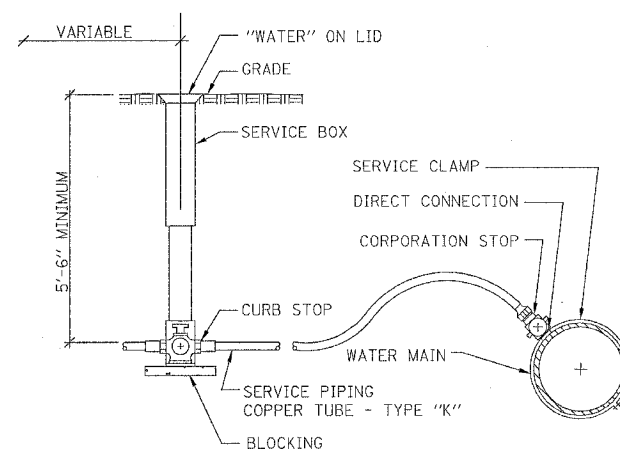
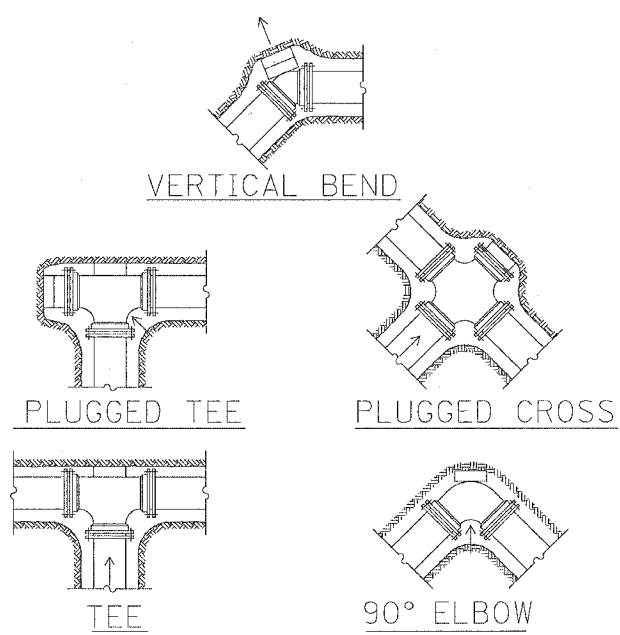


F.A.P. RTE.	SECTION	COUNTY	TOTAL SHEETS	SHEET NO.
549	116RS-1	OGLE	593	232
STA.		TO STA.		
FED. ROAD DIST. NO.		ILLINOIS FED. AID PROJECT		

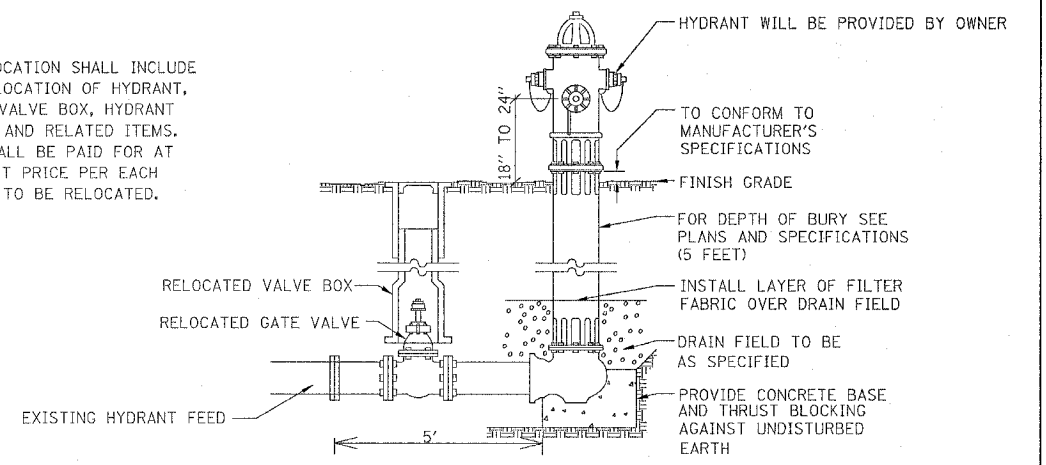


2594.2-B
TAP SERVICE
PIPING INSTALLATION - COPPER
N.T.S.



2594.1-B
THRUST BLOCK INSTALLATION
N.T.S.

NOTE:
 HYDRANT RELOCATION SHALL INCLUDE COMPLETE RELOCATION OF HYDRANT, GATE VALVE, VALVE BOX, HYDRANT BRANCH PIPE, AND RELATED ITEMS. THIS UNIT SHALL BE PAID FOR AT CONTRACT UNIT PRICE PER EACH FOR HYDRANT TO BE RELOCATED.



NOTES:
 CONCRETE BASE AND BLOCKING MATERIAL SHALL NOT BLOCK NOR OBSTRUCT HYDRANT DRAIN.
 HYDRANT INSTALLATION COMPLETE SHALL INCLUDE HYDRANT, GATE VALVE, VALVE BOX, HYDRANT BRANCH PIPE, AND TEE. THIS UNIT SHALL BE PAID FOR AT CONTRACT UNIT PRICE PER EACH FOR HYDRANT INSTALLATION COMPLETE.

02594.3-C
HYDRANT INSTALLATION
N.T.S.

GENERAL NOTES:

- R.J.T. INDICATES RESTRAINED JOINT TYPE.
- COORDINATE WITH VILLAGE PUBLIC WATER DEPARTMENT FOR FILLING, DISINFECTING, FLUSHING AND TESTING OF MAINS. INSTALL TEMPORARY FITTINGS AS NECESSARY. COST INCIDENTAL TO 6" WATER MAIN.
- ALL WATER MAIN SHALL HAVE 5.5 FOOT MINIMUM BURY DEPTH AND 10' MINIMUM HORIZONTAL AND 18" VERTICAL SEPARATION FROM SANITARY AND STORM SEWER.
- ALL CONSTRUCTION SHALL BE DONE IN ACCORDANCE WITH THE "STANDARD SPECIFICATIONS FOR WATER AND SEWER MAIN CONSTRUCTION IN ILLINOIS", LATEST EDITION AND THE STANDARD SPECIFICATIONS FOR ROAD AND BRIDGE CONSTRUCTION IN ILLINOIS, LATEST EDITION
- CONTRACTOR SHALL VERIFY ALL UNDERGROUND UTILITY LOCATIONS IN FIELD.
- QUANTITIES SHOWN ARE ESTIMATES FOR INFORMATION ONLY. PAYMENT WILL BE BASED ON ACTUAL QUANTITIES MEASURED IN THE FIELD OR ON PAYMENT LIMIT DETAILS.
- ALL EXCAVATIONS FOR STRUCTURES SHALL BE KEPT DE WATERED DURING CONSTRUCTION UNTIL BACK FILL IS IN PLACE.
- ALL WATER MAIN SHALL BE DUCTILE IRON, CLASS 52.
- ALL WATER MAIN SHALL BE DISINFECTED IN ACCORDANCE WITH SECTION 41-2.14 OF THE STANDARD SPECIFICATIONS FOR WATER AND SEWER MAIN CONSTRUCTION IN ILLINOIS, LATEST EDITION.
- TRENCH BACK FILL SHALL BE USED IN LOCATIONS WHERE THERE IS EXISTING AND PROPOSED PAVEMENT. THE PAVEMENT AND BASE SHALL BE REPLACED WITH THE SAME TYPE AND SPECIFICATIONS USED FOR THE EXISTING PAVEMENT.
- DIMENSIONS SHOWING PROPOSED WATER MAIN LOCATIONS ARE APPROXIMATE. THE HORIZONTAL ALIGNMENT MAY BE ADJUSTED WITH THE ENGINEER'S APPROVAL WHERE EXISTING BURIED UTILITIES MAY CONFLICT.
- CONNECTION OF WATER SERVICES SHALL INCLUDE CORPORATION STOP AND CONNECTION OF COPPER WATER SERVICE TO CORPORATION. LOCATION OF WATER SERVICES AND CURB STOPS ARE APPROXIMATE AND SHALL BE FIELD VERIFIED.

- MAIN SHUT DOWNS SHALL BE KEPT TO A MINIMUM. WORK SHALL BE COORDINATED WITH VILLAGE OF PUBLIC WORKS PERSONNEL. NO USER SHALL BE WITHOUT WATER SERVICE FOR MORE THAN 24 HOURS UNLESS SPECIAL APPROVAL IS OBTAINED.
- ALL WATER MAIN SHALL BE PRESSURE TESTED IN ACCORDANCE WITH SECTION 41-2.13 OF THE STANDARD SPECIFICATIONS FOR WATER AND SEWER MAIN CONSTRUCTION IN ILLINOIS, LATEST EDITION.
- CONTRACTOR SHALL COORDINATE ALL WATER MAIN CONSTRUCTION ACTIVITIES WITH THE VILLAGE OF FORRESTON PUBLIC WORKS DEPARTMENT (ALAN CRUTHIS, SUPERINTENDENT OF PUBLIC WORKS) AND VILLAGE ENGINEER (FEHR-GRAHAM & ASSOCIATES, CONTACT MICK GRONEWOLD).
- CONTRACTOR SHALL COORDINATE WATER MAIN CONSTRUCTION ACTIVITIES IN FRONT OF THE VILLAGE OF FORRESTON FIRE STATION WITH FIRE CHIEF JIM DAWS (815)938-2345. CONTRACTOR SHALL GIVE THE FIRE DEPARTMENT A MINIMUM ONE WEEK NOTICE PRIOR TO BEGINNING THIS WORK.
- ACTUAL LOCATION OF FIRE HYDRANTS TO BE DETERMINED BY VILLAGE OF FORRESTON SUPERINTENDENT OF PUBLIC WORKS AND FORRESTON FIRE PROTECTION DISTRICT FIRE CHIEF.

PLOT DATE = Wed Feb 09 07:52:12 2005
 FILE NAME = C:\pcc\mcs\p200497\080497.mcd
 PLOT SCALE = 30.0000 / IN.
 REFERENCE = REF#

REVISIONS		ILLINOIS DEPARTMENT OF TRANSPORTATION
NAME	DATE	
		SCALE: VERT. HORIZ. DATE
DRAWN BY		CHECKED BY