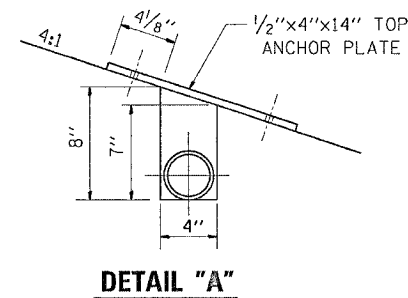
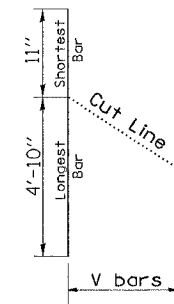
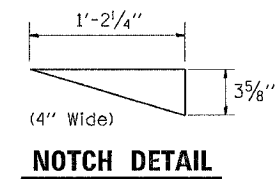
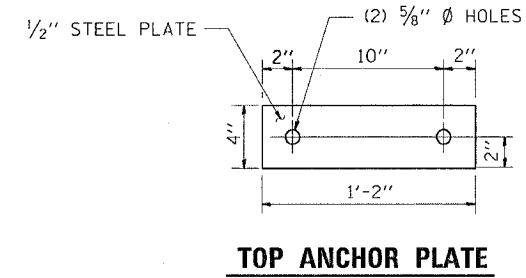
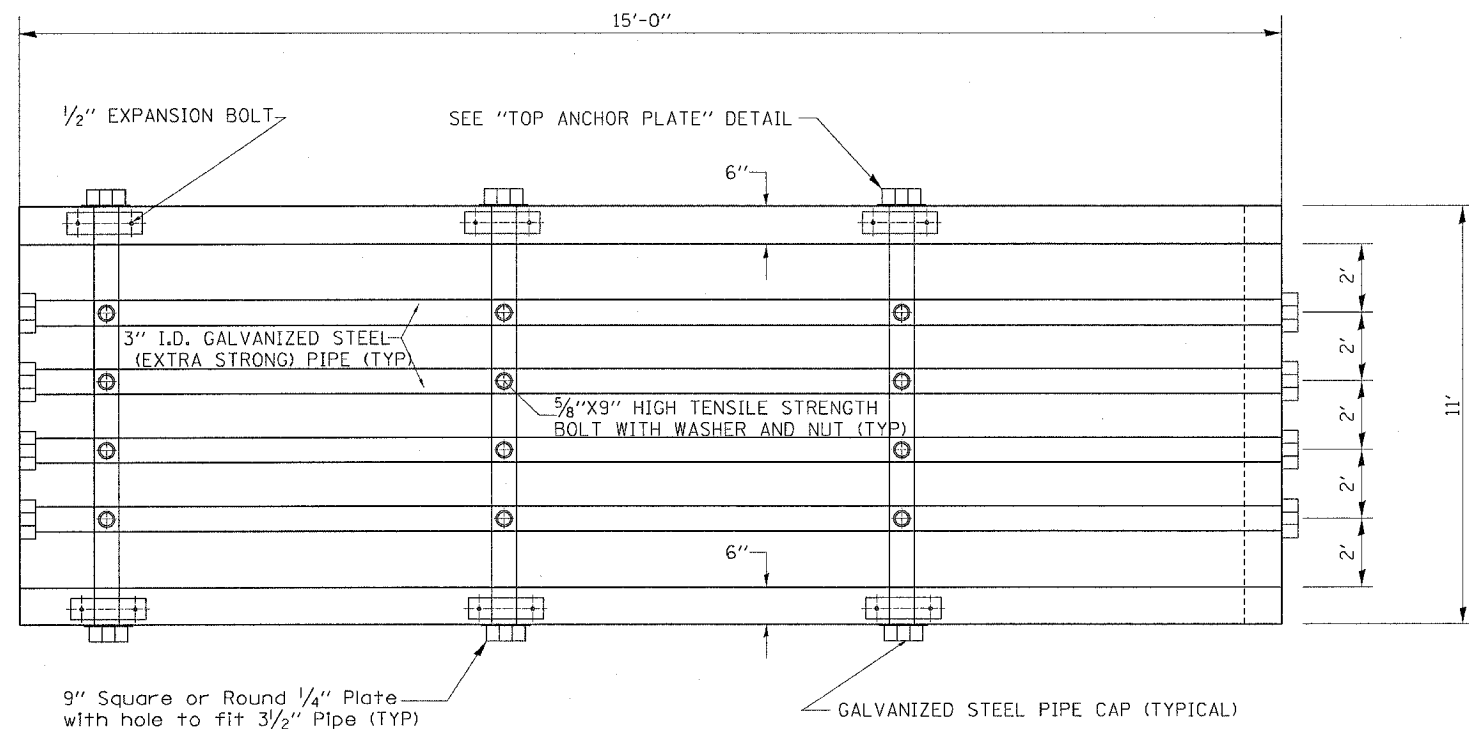


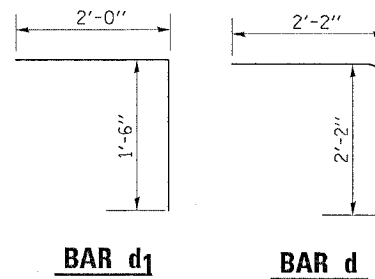
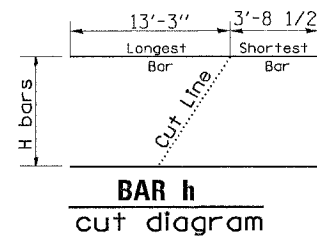
# CONCRETE BOX CULVERT END SECTION

## STA. 700+65.73 RT & LT

F.A.P. RTE.	SECTION	COUNTY	TOTAL SHEETS	SHEET NO.
549	116 RS-1	OGLE	593	212
STA.		TO STA.		
FED. ROAD DIST. NO.		ILLINOIS FED. AID PROJECT		



Order v AND h bars full length  
Cut to fit as shown and  
use remainder of bars in  
opposite wall.



**BILL OF MATERIALS**  
(Both Ends)

BAR	NUMBER	SIZE	LENGTH
h	8	#5	14'-0"
v	36	#4	5'-9"
d	2	#8	4'-4"
a	2	#4	10'-9"
d1	18	#5	3'-6"

DESCRIPTION	UNIT	QTY.
Class "SI" Concrete	CU. YD	14.3
Reinforcement Bars	LBS.	716.6
3" I.D. Galvanized Steel Pipe	4@	15'-4"
3" Galv Pipe Caps	3@	11'-4"
1/4" Galv. Stl. Plate (9" Nominal)	EACH	14
1/2" x 4" x 14" Galv. Steel Plate	EACH	6
5/8" x 9" Galv. Steel Bolts	EACH	12
Expansion Bolts 1/2"	EACH	12

**GENERAL NOTES:**

Class "SI" concrete shall be used throughout. Exposed edges shall be beveled 3/4".

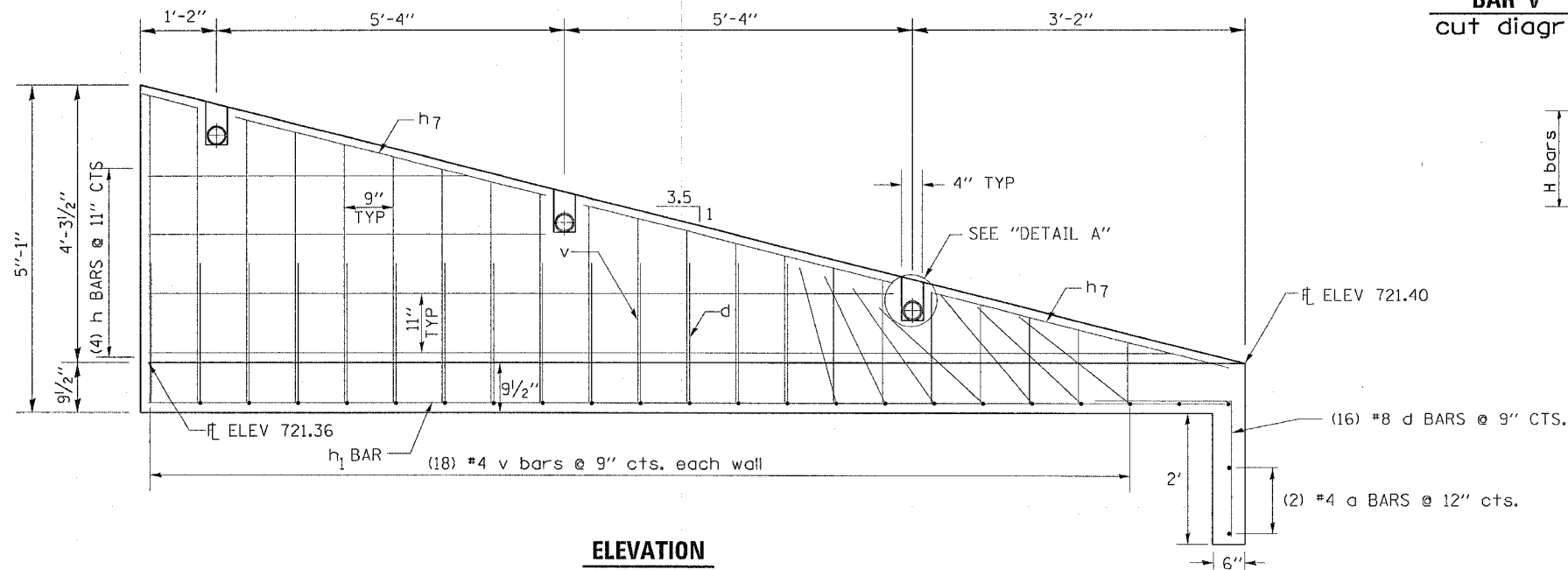
Bolts, Nuts, and Washers shall be in accordance with Article 540 of the standard specification and shall be galvanized.

All work and materials incorporated (Except Rein. Bars) into the construction of the Box Culvert, End Sections and grates shall be paid for at the contract unit price cu yd for CONCRETE BOX CULVERTS. bars will be paid for at the contract unit price pound for REINFORCEMENT BARS

Steel pipes shall conform to A.S.T.M. A-53 (Type E or S) Grade B, Schedule 40, and shall be galvanized conforming to A.S.T.M. A-120

Steel Plates shall conform to AASHTO M-183 and shall be galvanized conforming to AASHTO M-111.

Reinforcement bars shall conform to the requirements of AASHTO M-31 or M-53, grade 60.



DATE TIME  
DRAWN BY  
CHECKED BY  
APP. REF  
APP. REF