

F.A. RTE.	SECTION	COUNTY	TOTAL SHEETS	SHEET NO.
549	116RS-1	OGL	593	82
STA. 547+00		TO STA. 563+00		
FED. ROAD DIST. NO.		ILLINOIS FED. AID PROJECT		

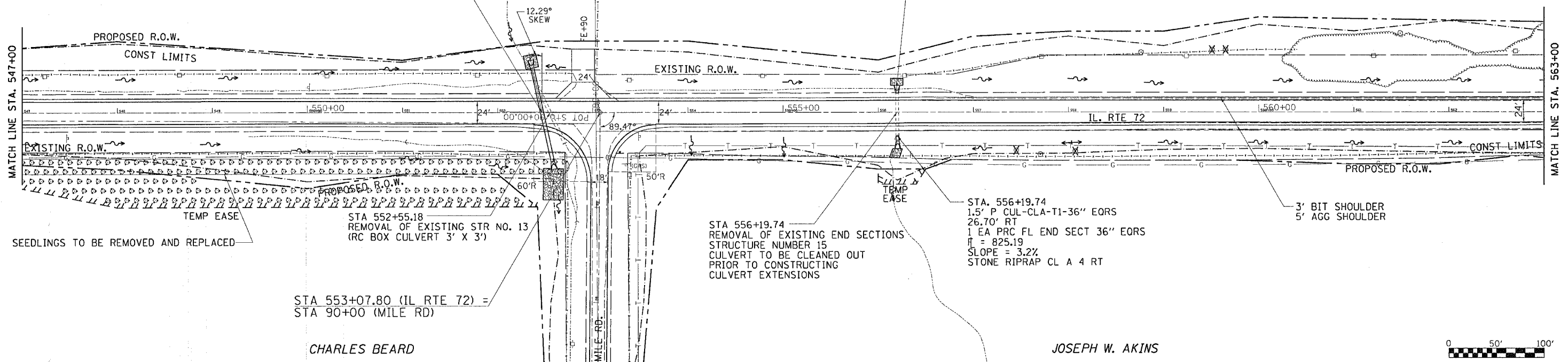
MARSDON D. STUKENBERG

EDNA A. UPCHURCH



STA 552+42
 101' P CUL, CLA, T2, 42"
 @ 12.29° SKEW RT AHEAD
 32.24' LT STA. 552+39.65
 36.97' RT STA. 552+54.72
 2 EA PRC FL END SECT. 42"
 H = 824.42 - 824.00
 SLOPE = 0.53%
 STONE RIPRAP CL A 4 LT & RT

STA. 556+19.74
 1 EA PRC FL END SECT 36" EORS
 H = 826.73
 SLOPE = 3.2%
 STONE RIPRAP CL A 4 LT



STA 553+07.80 (IL RTE 72) =
 STA 90+00 (MILE RD)

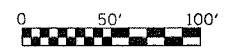
STA 556+19.74
 REMOVAL OF EXISTING END SECTIONS
 STRUCTURE NUMBER 15
 CULVERT TO BE CLEANED OUT
 PRIOR TO CONSTRUCTING
 CULVERT EXTENSIONS

STA. 556+19.74
 1.5' P CUL-CLA-T1-36" EORS
 26.70' RT
 1 EA PRC FL END SECT 36" EORS
 H = 825.19
 SLOPE = 3.2%
 STONE RIPRAP CL A 4 RT

3' BIT SHOULDER
 5' AGG SHOULDER

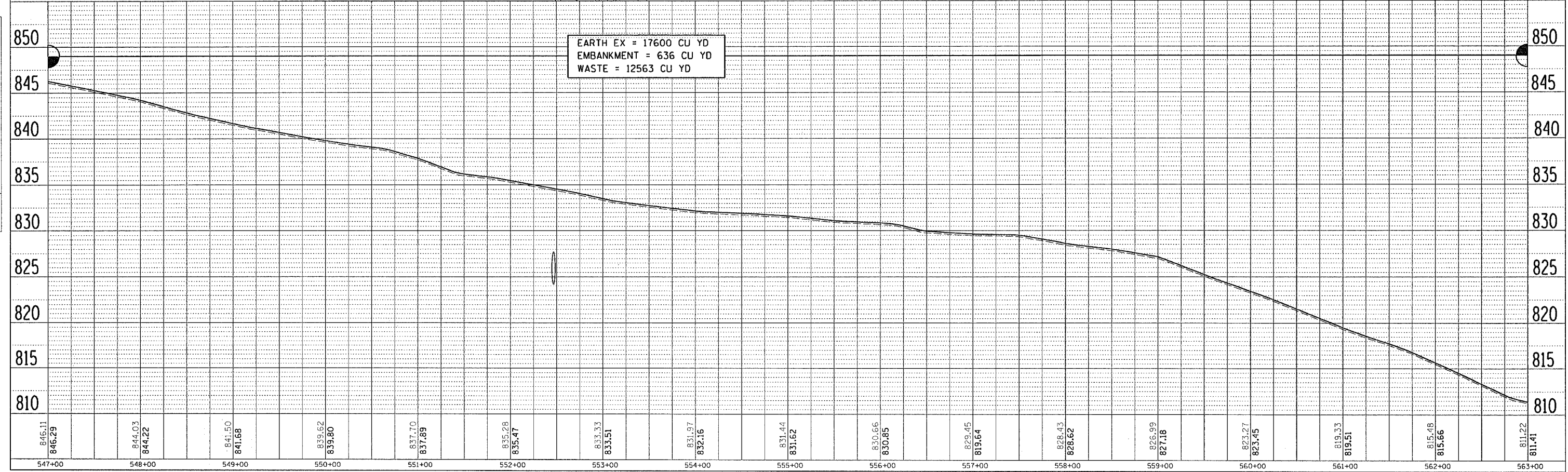
CHARLES BEARD

JOSEPH W. AKINS



PLAN	DATE

PROFILE	DATE



EARTH EX = 17600 CU YD
 EMBANKMENT = 636 CU YD
 WASTE = 12563 CU YD

DATE-TIME:
 10:00 AM 11/17/17
 REF 7
 REF