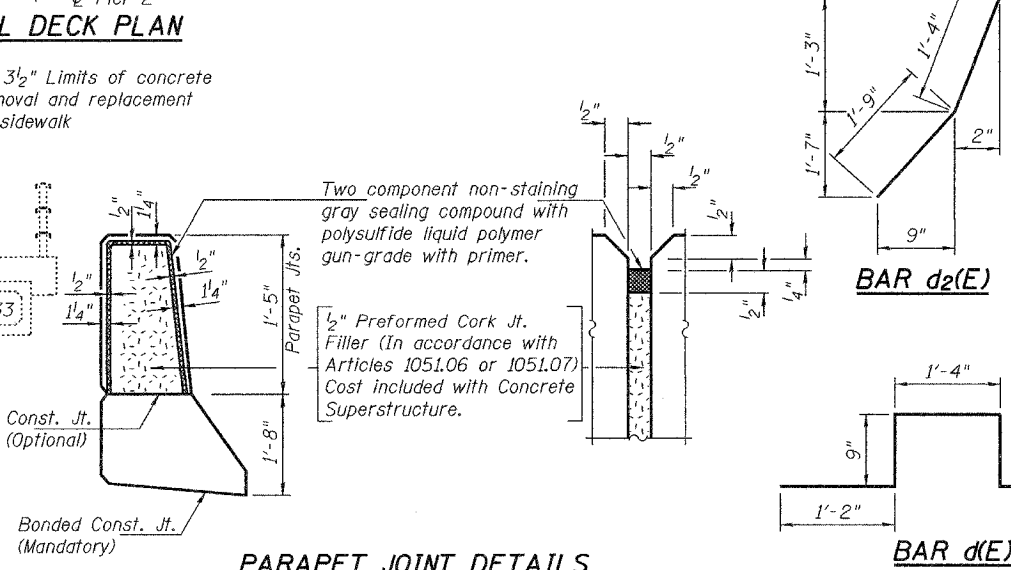
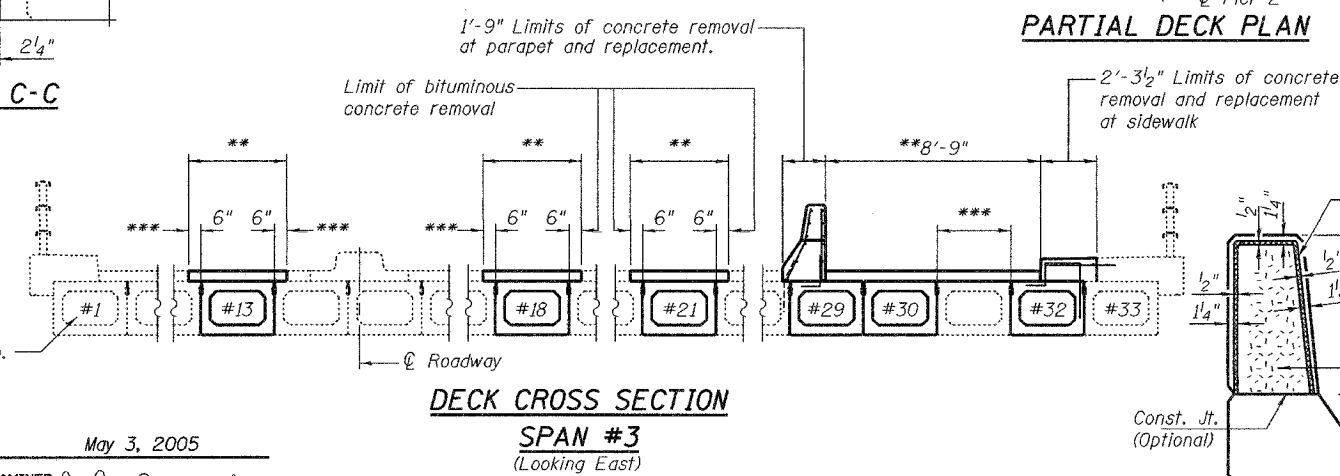
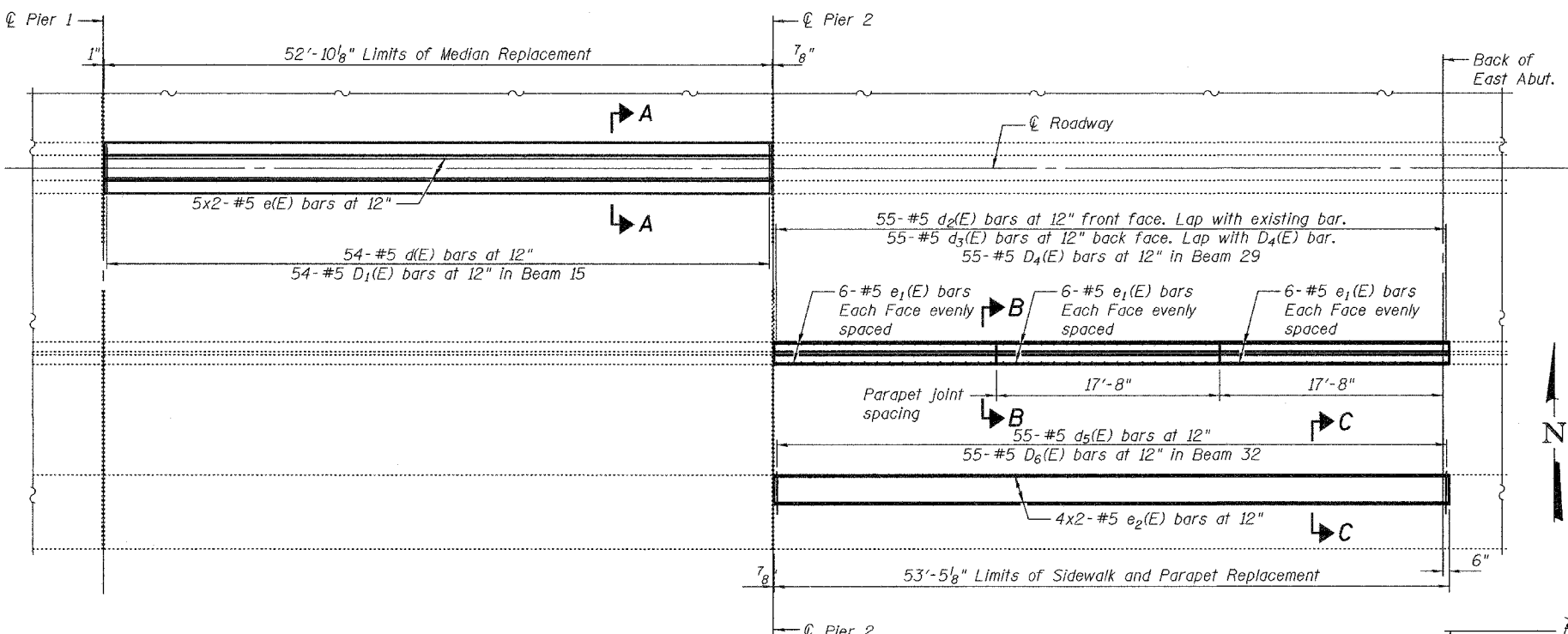
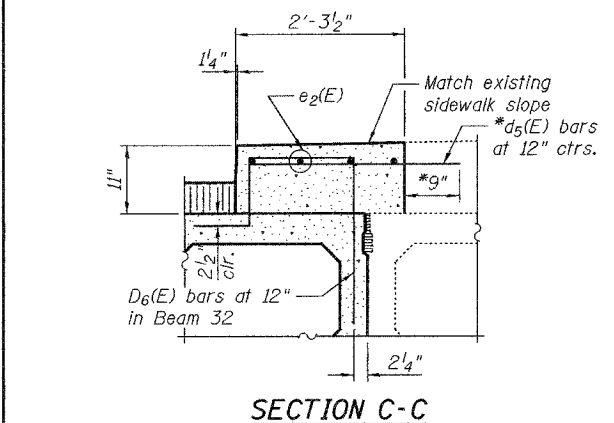
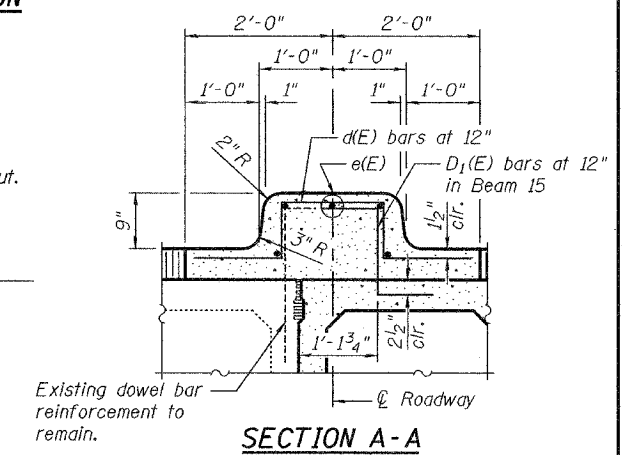
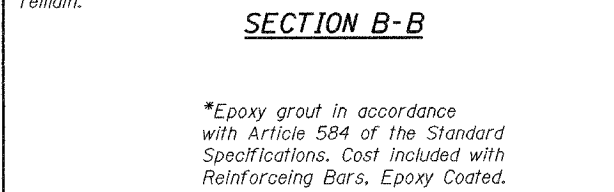
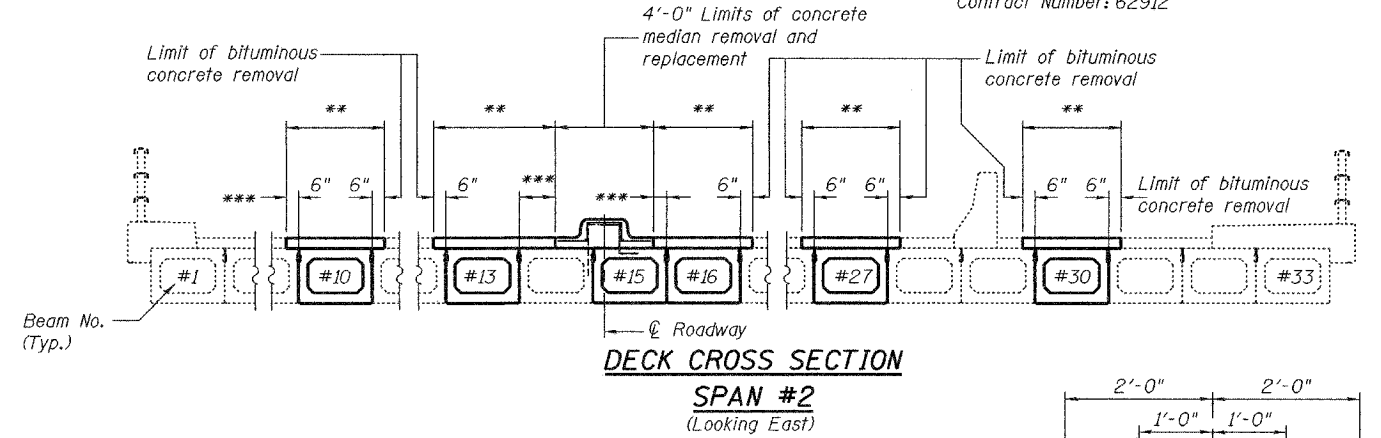
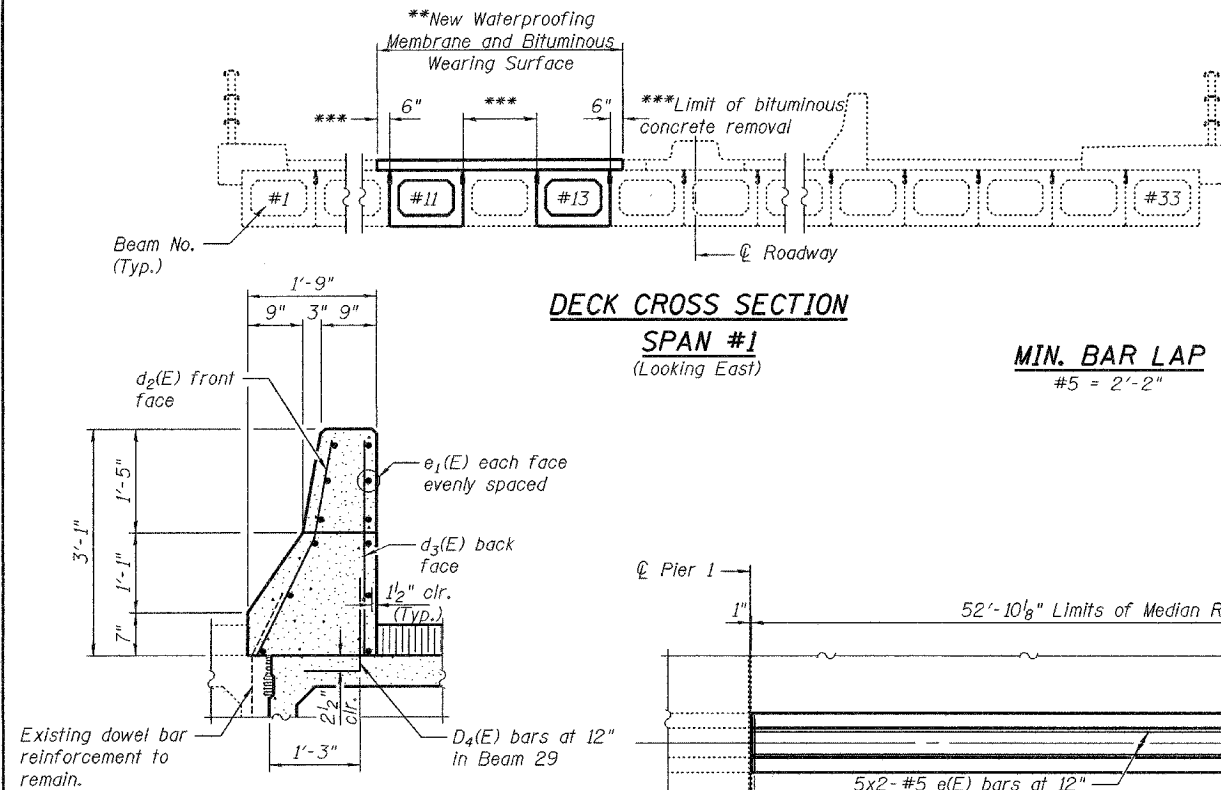


STATE OF ILLINOIS
DEPARTMENT OF TRANSPORTATION

ROUTE NO.	SECTION	COUNTY	SHEETS	SHEET NO.
		DuPage	14	12
Contract Number: 62912				

4 SHEETS



BILL OF MATERIAL

Bar	No.	Size	Length	Shape
d(E)	54	#5	5'-2"	[Symbol]
d2(E)	55	#5	3'-1"	[Symbol]
d3(E)	55	#5	2'-11"	[Symbol]
d5(E)	55	#5	2'-10"	[Symbol]
e(E)	10	#5	27'-6"	[Symbol]
e1(E)	36	#5	17'-5"	[Symbol]
e2(E)	8	#5	27'-10"	[Symbol]
Concrete Removal			Cu. Yd.	16.8
Concrete Superstructure			Cu. Yd.	18.7
Reinforcement Bars, Epoxy Coated			Lbs.	1970

Reinforcement bars designated (E) shall be epoxy coated.
Bars indicated thus 1 x 2-#5 etc. indicates 1 line of bars with 2 lengths per line.

DECK CROSS SECTIONS AND DECK DETAILS
F.A.U. RT. 9877
OVER SALT CREEK
DUPAGE COUNTY
SN 022-0084

DESIGNED	V.H.V.	EXAMINED	John A. Morris ENGINEER OF STRUCTURAL SERVICES
CHECKED	A.T.H.	PASSED	Ralph E. Anderson ENGINEER OF BRIDGES AND STRUCTURES
DRAWN	Drew Christopher		
CHECKED	V.H.V. A.T.H.		

May 3, 2005