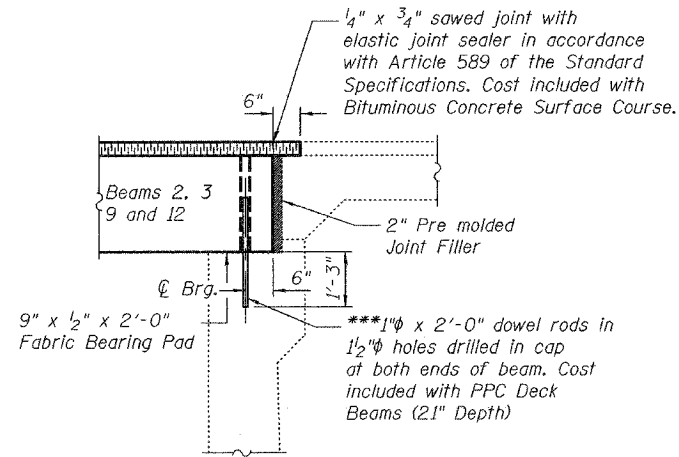
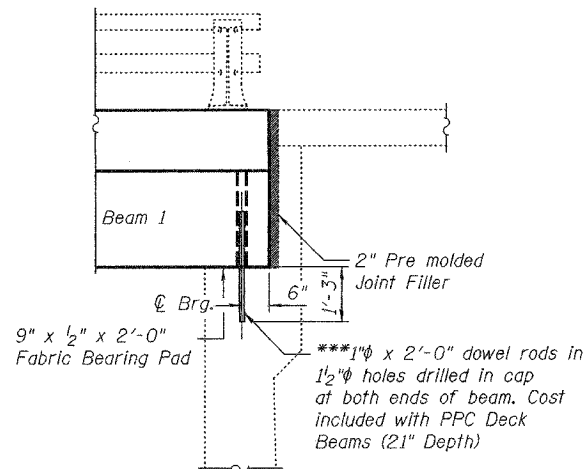


STATE OF ILLINOIS
DEPARTMENT OF TRANSPORTATION

ROUTE NO.	SECTION	COUNTY	TOTAL SHEETS	SHEET NO.	SHEET NO. 3
		Cook	14	9	4 SHEETS
FED. ROAD DIST. NO. 7	ILLINOIS	FED. AID PROJECT	Contract Number: 62912		



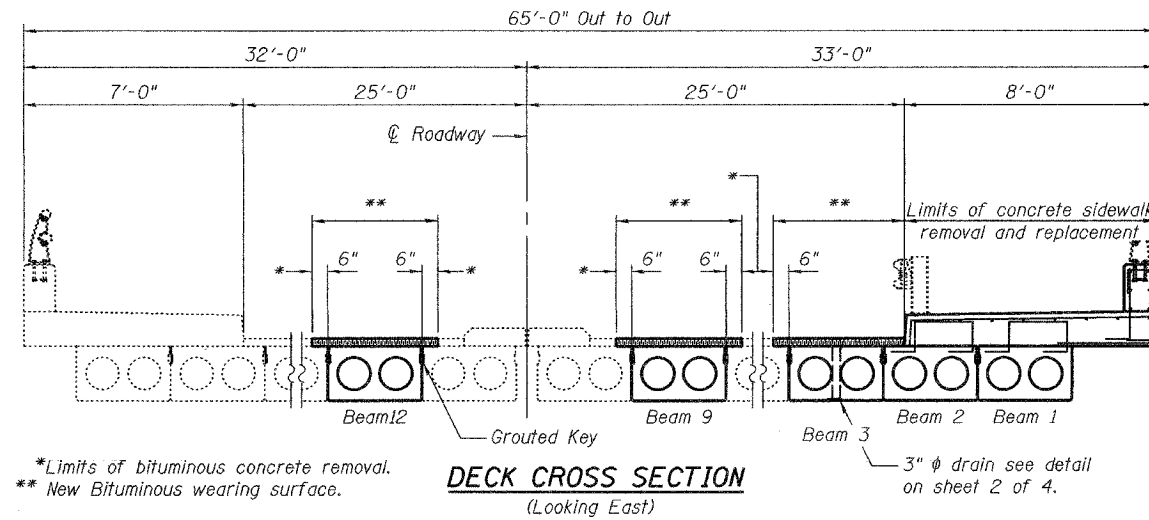
TYPICAL ABUTMENT SECTION



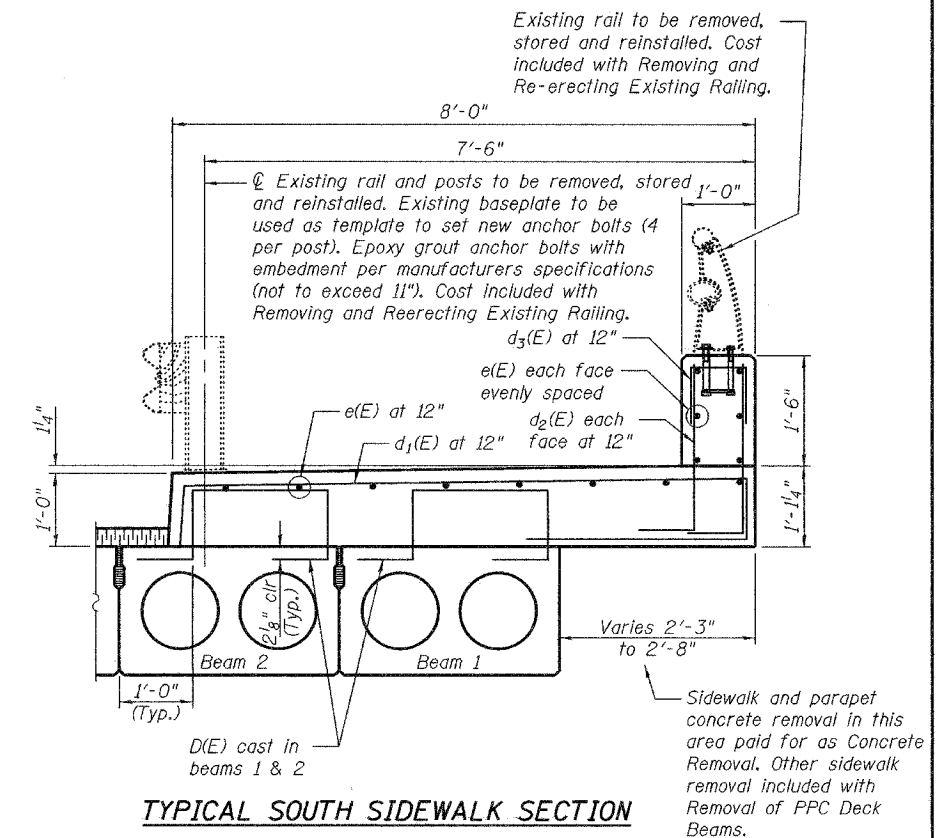
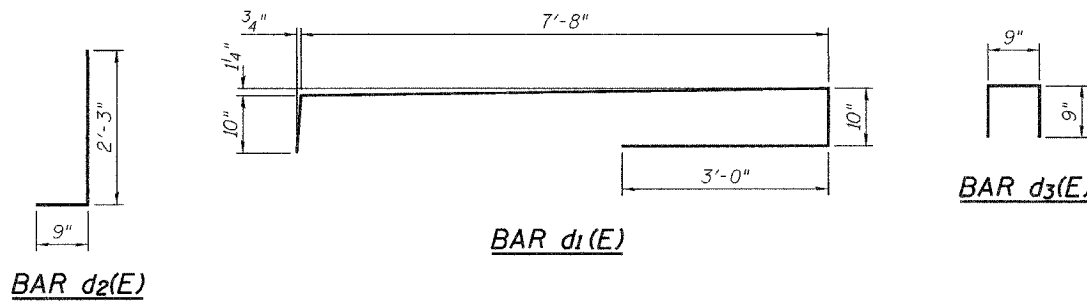
ABUTMENT SECTION AT SOUTH SIDEWALK

Notes:
Cut existing dowel rods at Beam 1 flush with the abutment cap.

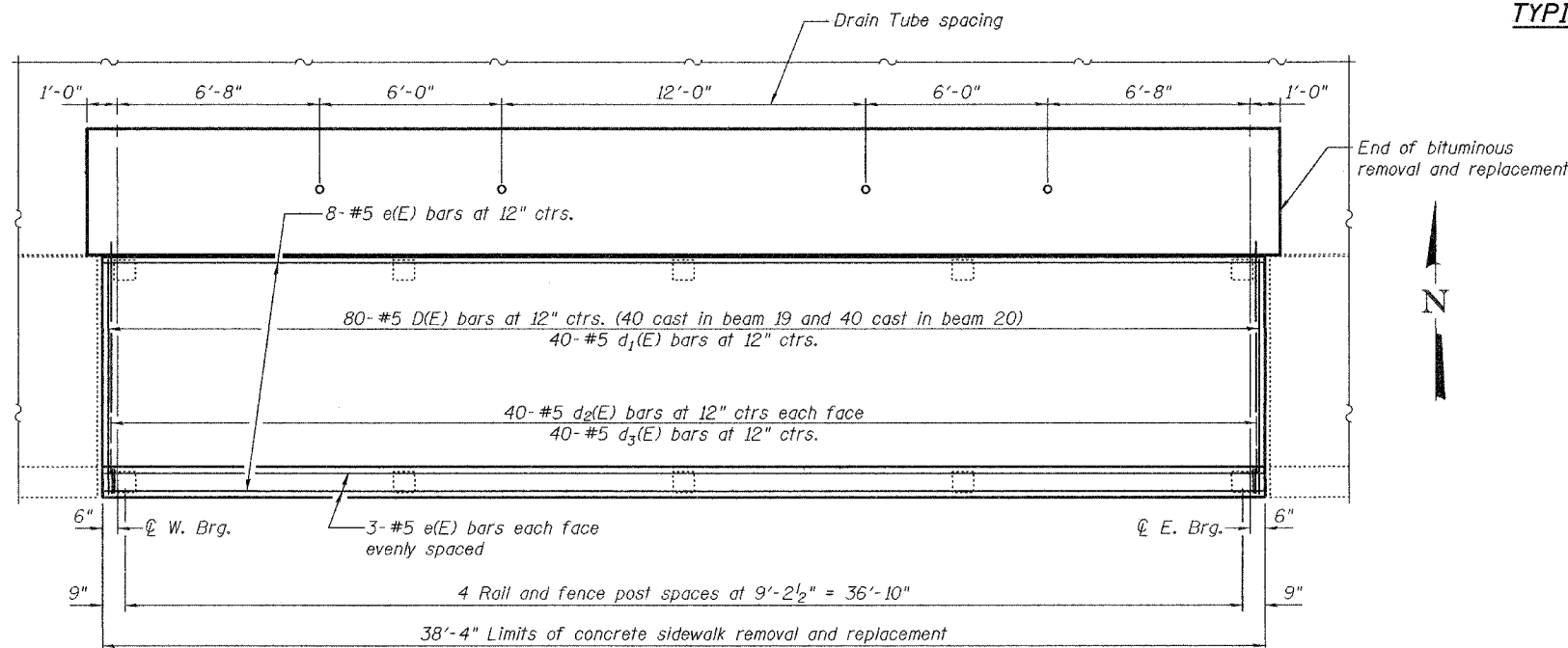
***Dowel rods to be grouted after beams are in place and allowed to cure for a minimum of 24 hours prior to grouting shear keys.



DECK CROSS SECTION
(Looking East)



TYPICAL SOUTH SIDEWALK SECTION



PARTIAL DECK AND SIDEWALK PLAN

BILL OF MATERIAL

Bar	No.	Size	Length	Shape
d ₁ (E)	40	#5	12'-4"	
d ₂ (E)	80	#5	3'-0"	
d ₃ (E)	40	#5	2'-3"	
e(E)	14	#5	38'-0"	
Concrete Removal		Cu. Yd.	5.9	
Concrete Superstructure		Cu. Yd.	13.5	
Reinforcement Bars, Epoxy Coated		Lbs.	1410	

Reinforcement bars designated (E) shall be epoxy coated.

DESIGNED	V.H.V.
CHECKED	S.J.B.
DRAWN	Drew Christopher
CHECKED	V.H.V. S.J.B.

EXAMINED	John A. Morris ENGINEER OF STRUCTURAL SERVICES
PASSED	Ralph E. Anderson ENGINEER OF BRIDGES AND STRUCTURES

May 3, 2005

DECK DETAILS
F.A.P. RT. 343
COOK COUNTY
SN 016-0525