

62890

F.A.P. RTE.	SECTION	COUNTY	TOTAL SHEETS	SHEET NO.
1238	2004-125 TS	LAKE	18	1
D-91-086-05				

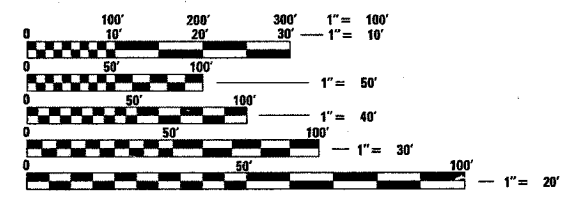
**INDEX OF SHEETS**

1. TITLE SHEET
2. SUMMARY OF QUANTITIES
- 3-6. STANDARD TRAFFIC SIGNAL DESIGN DETAILS
7. TRAFFIC SIGNAL MODIFICATION PLAN - IL. RTE. 176 AT BRADLEY RD.
8. CABLE PLAN, PHASE DESIGNATION DIAGRAM, EMERGENCY VEHICLE PREEMPTION SEQUENCE AND SCHEDULE OF QUANTITIES - IL. RTE. 176 AT BRADLEY RD.
9. TRAFFIC SIGNAL MODIFICATION PLAN - IL. RTE. 176 AT EAST OF I-94 RAMP/ LAMBS FARM ENTRANCE
10. CABLE PLAN, PHASE DESIGNATION DIAGRAM, EMERGENCY VEHICLE PREEMPTION SEQUENCE AND SCHEDULE OF QUANTITIES - IL. RTE. 176 AT EAST OF I-94 RAMP/LAMP FARM ENTRANCE
11. TRAFFIC SIGNAL MODIFICATION PLAN - IL. RTE. 176 WEST OF I-94 RAMP
12. CABLE PLAN, PHASE DESIGNATION DIAGRAM, EMERGENCY VEHICLE PREEMPTION SEQUENCE AND SCHEDULE OF QUANTITIES - IL. RTE. 176 AT WEST OF I-94 RAMP
- 13-14. TRAFFIC SIGNAL MODIFICATION PLAN - IL. RTE. 176 AT ST. MARY'S RD.
15. CABLE PLAN, PHASE DESIGNATION DIAGRAM, EMERGENCY VEHICLE PREEMPTION SEQUENCE AND SCHEDULE OF QUANTITIES - IL. RTE. 176 AT ST. MARY'S RD.
- 16-17. INTERCONNECT PLAN - ILL. RTE. 176 FROM ST. MARY'S RD. TO BRADLEY RD.
18. INTERCONNECT SCHEMATIC

**STANDARDS**

701006-02	702001-05	880006	701801-03
701011-01	424001-03	701501-03	
701101-01	814001	701606-04	
701301-02	857001	701701-04	

IMPROVEMENT LOCATED IN THE VILLAGE OF LIBETVILLE, ILLINOIS



FULL SIZE PLANS HAVE BEEN PREPARED USING STANDARD ENGINEERING SCALES. REDUCED SIZED PLANS WILL NOT CONFORM TO STANDARD SCALES. IN MAKING MEASUREMENTS ON REDUCED PLANS, THE ABOVE SCALES MAY BE USED.

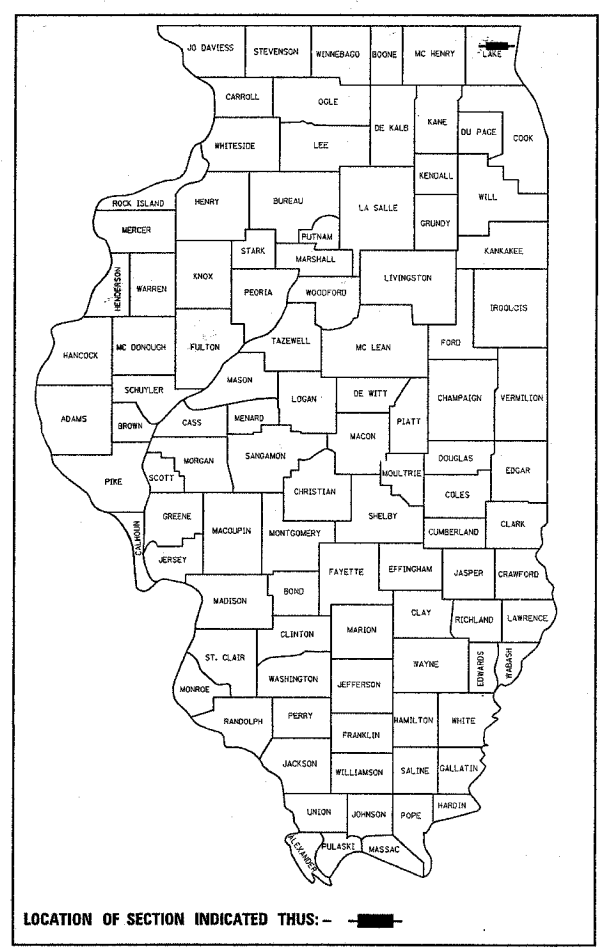
PREPARED BY: Terry Rammacher 3/4/05  
 TRAFFIC ENGINEER DATE

**CONTRACT NO. 62890**

**STATE OF ILLINOIS  
 DEPARTMENT OF TRANSPORTATION**

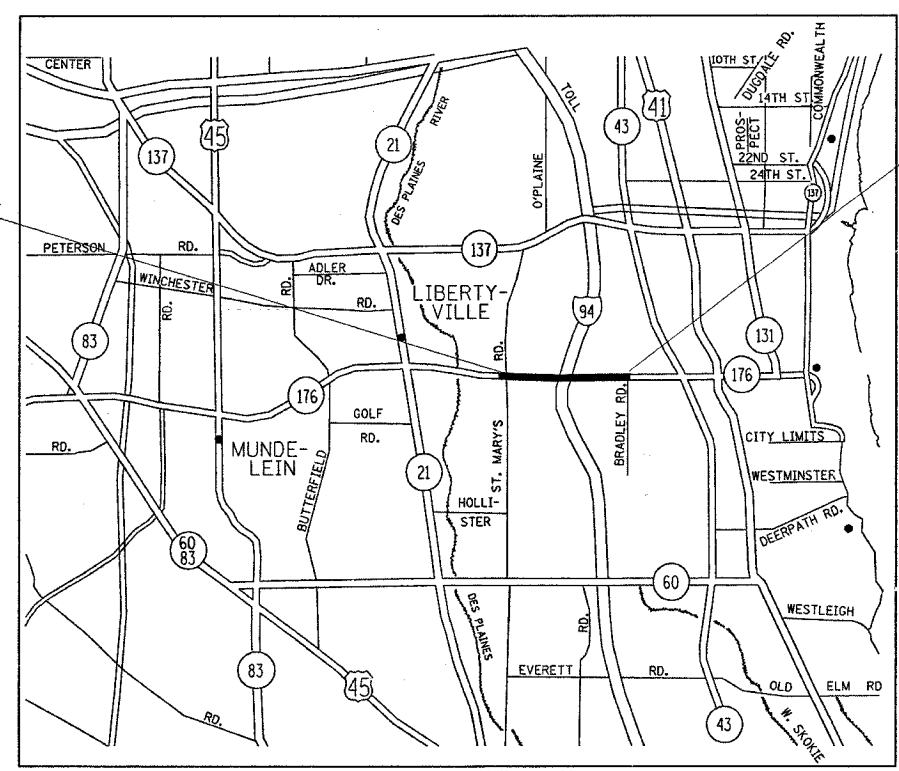
**DIVISION OF HIGHWAYS  
 PLANS FOR PROPOSED  
 FEDERAL AID HIGHWAY**

**DISTRICT 1  
 CONGESTION MITIGATION AIR QUALITY  
 FIBER OPTIC COMMUNICATIONS NETWORK  
 FAU ROUTE 1238/ILL. ROUTE 176 (PARK AVE.)  
 FROM ST. MARY'S ROAD TO BRADLEY ROAD  
 SECTION 2004-125 TS  
 LAKE COUNTY  
 C-91-086-05  
 PROJECT: CMM-1238(008)**



LOCATION OF SECTION INDICATED THUS: - [shaded box] -

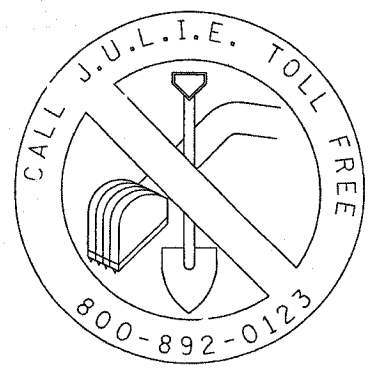
PROJECT BEGINS



LENGTH OF IMPROVEMENT = 1.2 MI  
 LIBERTYVILLE TOWNSHIP  
 LOCATION MAP

SCALE PLAN 1" = 20'  
 INTERCONNECT 1" = 50'

PROJECT ENDS



48 - HOURS BEFORE DIGGING

STATE OF ILLINOIS  
 DEPARTMENT OF TRANSPORTATION  
 DIVISION OF HIGHWAYS

SUBMITTED March 4 2005  
Deane M. O'Keefe DEPUTY DIRECTOR OF HIGHWAYS, REGION ENGINEER

May 13 2005  
Mike Hane ENGINEER OF DESIGN AND ENVIRONMENT

May 13 2005  
Victor Mader DIRECTOR OF HIGHWAYS, CHIEF ENGINEER

**PRINTED BY AUTHORITY OF  
 THE STATE OF ILLINOIS**

BUREAU OF TRAFFIC: TERRY RAMMACHER / DARYLE DREW (847) 705-4420