

F.A.I. No.	SECTION	COUNTY	TOTAL SHEETS	SHEET NO.
Var.	2004-1131	COOK	20	1

CONTRACT NO. 62869

STATE OF ILLINOIS

DEPARTMENT OF TRANSPORTATION

DIVISION OF HIGHWAYS

PLANS FOR PROPOSED HIGHWAY

VARIOUS ROUTES  
VARIOUS LOCATIONS

BRIDGE PARAPET AND DECK REPAIR

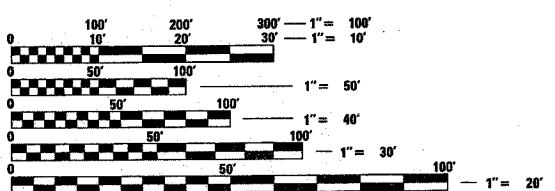
COOK COUNTY

SECTION 2004-1131

C-91-046-05

FOR INDEX OF SHEETS, SEE SHEET NO. 2

IMPROVEMENT IS LOCATED  
IN THE CITY OF CHICAGO AND  
THE VILLAGE OF SUMMIT AND  
ROLLING MEADOWS



FULL SIZE PLANS HAVE BEEN PREPARED USING STANDARD ENGINEERING SCALES. REDUCED SIZED PLANS WILL NOT CONFORM TO STANDARD SCALES. IN MAKING MEASUREMENTS ON REDUCED PLANS, THE ABOVE SCALES MAY BE USED.

SEE SHEET 4 AND 5 FOR LOCATION MAPS

C.U.A.N.  
CHICAGO UTILITY ALERT NETWORK  
1-312-744-7000

J.U.L.I.E.  
JOINT UTILITY LOCATION INFORMATION FOR EXCAVATION  
1-800-892-0123

CONTRACT NO. 62869

STATE OF ILLINOIS  
DEPARTMENT OF TRANSPORTATION  
DIVISION OF HIGHWAYS

SUBMITTED April 14, 2005  
Dina O'Keefe AP  
DEPUTY DIRECTOR OF HIGHWAYS, REGION ENGINEER

May 13, 2005  
Mike Hane ID  
ENGINEER OF DESIGN AND ENVIRONMENT

May 13, 2005  
Victor Maden ID  
DIRECTOR, DIVISION OF HIGHWAYS

PRINTED BY THE AUTHORITY  
OF THE STATE OF ILLINOIS

REGION ONE - BUREAU OF DESIGN:  
PLAN PREPARATION ENGINEER: K. ENGR/R. BORO (847) 705-4178

FAU RTE.	SECTION	COUNTY	TOTAL SHEETS	SHEET NO.
Var.	2004-1131	COOK	20	2
STA.		TO STA.		
FED. ROAD DIST. NO.	ILLINOIS	FED. AID PROJECT		

CONTRACT NO. 62869

**INDEX OF SHEETS**

SHEET NO	DESCRIPTION
1	TITLE SHEET
2	INDEX OF SHEETS, STATE STANDARDS, & GENERAL NOTES
3	SUMMARY OF QUANTITIES
4-5	LOCATION MAPS
6	LOCATION & DESCRIPTION OF REPAIRS
7	PARAPET DIMENSIONS
8	LOCATION NO. 15 PATCHING
9	LOCATION NO. 15 DETAILS AND LIMITS OF PROTECTIVE SHIELDING
10-17	LOCATION NO. 15 TRAFFIC CONTROL AND PROTECTION
18	FREEWAY ENTRANCE AND EXIT RAMP CLOSURE DETAILS
19	TRAFFIC CONTROL FOR SHOULDER CLOSURE AND PARTIAL RAMP CLOSURE
20-20A	FREEWAY PAVEMENT MARKING

**STATE STANDARDS**

STANDARD NO	DESCRIPTION
000001-04	STANDARD SYMBOLS, ABBREVIATIONS AND PATTERNS
001001	AREAS AND SPACING OF REINFORCEMENT BARS
701101-01	OFF ROAD OPERATIONS, MULTILANE LESS THAN 4.5m (15') AWAY FOR SPEEDS > 45 MPH
701400-02	APPROACH TO LANE CLOSURE, FREEWAY/EXPRESSWAY
701401-03	LANE CLOSURE, FREEWAY/EXPRESSWAY
701411-03	LANE CLOSURE, MULTILANE, AT ENTRANCE OR EXIT RAMP FOR SPEEDS > 45 MPH
701426-02	LANE CLOSURE, MULTILANE, INTERMITTENT OR MOVING OPERATIONS FOR SPEEDS > 45 MPH
701446	TWO LANE CLOSURE FREEWAY/EXPRESSWAY
702001-05	TRAFFIC CONTROL DEVICES

**GENERAL NOTES**

- BEFORE STARTING ANY EXCAVATION, THE CONTRACTOR SHALL CALL "J.U.L.I.E." AT (800) 892-0123 FOR FIELD LOCATIONS OF BURIED ELECTRIC, TELEPHONE AND GAS UTILITIES. 48 HOUR NOTIFICATION IS REQUIRED.
- TRANSITIONS SHALL BE USED TO MATCH PROPOSED CURB AND GUTTER AND MEDIAN ITEMS OF WORK TO EXISTING CURBS AND GUTTER AND MEDIANS IN THE FIELD, UNLESS OTHERWISE SHOWN. THE TRANSITIONS SHALL BE PAID FOR AT THE CONTRACT UNIT PRICE FOR THE PROPOSED ITEMS OF WORK SPECIFIED.
- THE CONTRACTOR SHALL COORDINATE CONSTRUCTION ACTIVITIES WITH UTILITY COMPANIES.
- THE CONTRACTOR WILL NOT BE ALLOWED TO SET UP A YARD OR FIELD OFFICE ON STATE (or TOLLWAY) PROPERTY WITHOUT WRITTEN PERMISSION FROM THE DEPARTMENT (or ISTHA).
- WHEN ARTIFICIAL LIGHTING IS UTILIZED IN NIGHT OPERATIONS, THE CONTRACTOR SHALL EXERCISE THE UTMOST PRECAUTIONS IN PREVENTING ADVERSE VISIBILITY TO THE MOTORING PUBLIC AND ADJOINING RESIDENTIAL AREAS.
- ALL DAMAGE TO EXISTING PAVEMENT MARKINGS OR RAISED REFLECTIVE PAVEMENT MARKERS OUTSIDE THE REMOVAL LINE SHOWN ON THE PLANS SHALL BE REPLACED AT THE CONTRACTOR'S EXPENSE.
- BEFORE BEGINNING ANY WORK, THE CONTRACTOR SHALL RETAIN AND RECORD FOR FUTURE REFERENCE, ALL EXISTING PAVEMENT MARKING LINES (AND RAISED REFLECTIVE PAVEMENT MARKERS) IN ORDER THAT THESE LOCATIONS CAN BE RE-ESTABLISHED FOR STRIPING. EXACT LOCATIONS OF ALL PAVEMENT MARKINGS SHALL BE AS DIRECTED BY THE ENGINEER.
- ALL PAVEMENT PATCHING LOCATIONS WILL BE DETERMINED IN THE FIELD BY THE ENGINEER.
- IT SHALL BE THE CONTRACTOR'S RESPONSIBILITY TO VERIFY ALL DIMENSIONS AND CONDITIONS EXISTING IN THE FIELD PRIOR TO CONSTRUCTION AND ORDERING OF MATERIALS.
- THE CONTRACTOR SHALL CONTACT THE DISTRICT ONE TRAFFIC CONTROL SUPERVISOR AT (847)705-4155 A MINIMUM OF 72 HOURS IN ADVANCE OF BEGINNING WORK.
- WHERE SECTION OR SUB-SECTION MONUMENTS ARE ENCOUNTERED, THE ENGINEER SHALL BE NOTIFIED BEFORE SUCH MONUMENTS ARE REMOVED. THE CONTRACTOR SHALL PROTECT AND CAREFULLY PRESERVE ALL PROPERTY MARKERS AND MONUMENTS UNTIL THE OWNER, AN AUTHORIZED SURVEYOR OR AGENT HAS WITNESSED THEIR LOCATION.
- THESE PLANS HAVE BEEN PREPARED FROM NOTES RECEIVED FROM FIELD MAINTENANCE ENGINEERS (TECHNICIANS or BRIDGE INSPECTORS).
- THE CONTRACTOR SHALL BE REQUIRED TO PROVIDE ACCESS TO ABUTTING PROPERTY AT ALL TIMES DURING THE CONSTRUCTION OF THIS PROJECT.
- THE CONTRACTOR SHALL BE RESPONSIBLE FOR THE NOTIFICATION OF ALL EMERGENCY SERVICES, SCHOOL DISTRICTS, I.D.O.T.'S COMMUNICATIONS CENTER, SPRINGFIELD TRUCK PERMIT SECTION AND OTHER AGENCIES AFFECTED BY THE CLOSURE. THE CONTRACTOR SHALL ALSO BE RESPONSIBLE FOR POSTING SIGNS THAT WILL INDICATE THE DATES THE CLOSURE WILL BE IN PLACE.
- DO NOT SCALE PLANS FOR CONSTRUCTION DIMENSIONS.
- DOUBLE LANE MARKERS ARE TO BE USED AS SHOWN ON THE DISTRICT ONE DETAIL FOR TYPICAL APPLICATION OF RAISED REFLECTIVE PAVEMENT MARKERS (SNOW-PLOW RESISTANT) SHOWN IN THE PLANS.

**GENERAL NOTES (City of Chicago)**

- BEFORE STARTING ANY EXCAVATION, THE CONTRACTOR SHALL CALL "C.U.A.N." (CHICAGO UTILITY ALERT NETWORK) AT (312)744-7000 FOR FIELD LOCATIONS OF BURIED ELECTRIC, TELEPHONE AND GAS UTILITIES. (48 HOUR NOTIFICATION IS REQUIRED).
- THE CONTRACTOR SHALL COORDINATE CONSTRUCTION ACTIVITIES WITH UTILITY COMPANIES AND THE CITY OF CHICAGO.

**GENERAL NOTES (Bridge)**

- THE CONTRACTOR SHALL TAKE NECESSARY PRECAUTIONS TO INSURE THAT NO DEBRIS WILL ENDANGER OR INTERFERE WITH TRAFFIC ON THE ROADWAY BENEATH THE BRIDGE ACCORDING TO ARTICLE 107.09 OF THE STANDARD SPECIFICATIONS. THIS WORK WILL NOT BE PAID FOR SEPERATELY, BUT SHALL BE INCLUDED IN THE CONTRACT UNIT PRICE FOR THE APPROPRIATE PAYITEM INVOLVED AND NO ADDITIONAL COMPENSATION WILL BE ALLOWED.
- EXISTING REINFORCEMENT BARS EXTENDING INTO THE REMOVAL AREA SHALL BE CLEANED, STRAIGHTENED AND INCORPORATED INTO THE NEW CONCRETE. ANY REINFORCEMENT BARS THAT ARE DAMAGED DURING THE REMOVAL SHALL BE REPLACED WITH AN APPROVED BAR SPLICER OR ANCHORAGE SYSTEM. COST INCLUDED WITH CONCRETE REMOVAL.
- FIELD CUTS OF PROPOSED REINFORCEMENT BARS SHALL BE INCLUDED IN THE COST OF REINFORCEMENT BARS (EPOXY COATED).

**GENERAL NOTES (Bridge) cont'd**

- PLAN DIMENSIONS AND DETAILS RELATIVE TO THE EXISTING STRUCTURE HAVE BEEN TAKEN FROM EXISTING PLANS AND ARE SUBJECT TO NOMINAL CONSTRUCTION VARIATIONS. IT SHALL BE THE CONTRACTOR'S RESPONSIBILITY TO VERIFY SUCH DIMENSIONS AND DETAILS IN THE FIELD AND MAKE NECESSARY APPROVED ADJUSTMENTS PRIOR TO CONSTRUCTION OR ORDERING MATERIALS. SUCH VARIATIONS SHALL NOT BE A CAUSE FOR ADDITIONAL COMPENSATION FOR A CHANGE IN THE SCOPE OF WORK; HOWEVER, THE CONTRACTOR WILL BE PAID FOR THE QUANTITY ACTUALLY FURNISHED AT THE UNIT PRICE BID FOR THE WORK.
- REINFORCEMENT BARS SHALL CONFORM TO THE REQUIREMENTS OF AASHTO M-31, M-322, GRADE 60.
- JOINTS ARE TO BE INSTALLED AS NEEDED TO MATCH EXISTING.
- IF A GAP IN THE PARAPET IS TO OCCUR FOR ANY PERIOD OF TIME, A TEMPORARY RAILING MUST BE INSTALLED SO THAT AT NO TIME SHALL THERE BE AN OPENING IN ANY PORTION OF THE EXISTING SYSTEM.

REVISIONS	
NAME	DATE

ILLINOIS DEPARTMENT OF TRANSPORTATION

INDEX OF SHEETS

STATE STANDARDS

GENERAL NOTES

SCALE \_\_\_\_\_ DATE \_\_\_\_\_

DRAWN BY \_\_\_\_\_ CHECKED BY \_\_\_\_\_

08:26:45 04/19/2005

F.A. RTE.	SECTION	COUNTY	TOTAL SHEETS	SHEET NO.
Var.	2004-1131	COOK	20	3
STA.	TO STA.			
FED. ROAD DIST. NO.	ILLINOIS	FED. AID PROJECT		

CONTRACT NO. 62869

SUMMARY OF QUANTITIES			URBAN SPY-2A TOTAL QUANTITY	SN: 016-1026	SN: 016-0026	SN: 016-1115			SN: 016-1067			SN: 016-1109			SN: 016-0120	SN: 016-2133	SN: 016-1111	
CODE NO.	ITEM	UNIT		Loc. 1	Loc. 2	Loc. 3	Loc. 4	Loc. 5	Loc. 6	Loc. 7	Loc. 8	Loc. 9	Loc. 10	Loc. 11	Loc. 12	Loc. 13	Loc. 14	Loc. 15
50102400	CONCRETE REMOVAL	CU YD	14.1	0.6	0.8	2.2	0.8	1.0	0.4	1.5	1.2	1.2	0.9	0.4	0.9	1.2	1.0	0
50300255	CONCRETE SUPERSTRUCTURE	CU YD	16.6	0.6	0.9	2.6	0.8	1.8	0.6	2.0	1.2	1.5	0.9	0.6	0.9	1.2	1.0	0
50800205	REINFORCEMENT BARS, EPOXY COATED	POUND	1920	40	140	380	70	270	100	290	100	210	80	60	80	100	0	0
67000400	ENGINEER'S FIELD OFFICE, TYPE A	CAL MO	3	0.2	0.2	0.2	0.2	0.2	0.2	0.2	0.2	0.2	0.2	0.2	0.2	0.2	0.2	0.2
67100100	MOBILIZATION	L SUM	1	0.06	0.06	0.07	0.06	0.07	0.06	0.07	0.07	0.07	0.07	0.06	0.07	0.07	0.07	0.07
* 78008220	POLYUREA PAVEMENT MARKING TYPE 1 - LINE 5"	FOOT	40	0	0	0	0	0	0	0	0	0	0	0	0	0	0	40
* 78100105	RAISED REFLECTIVE PAVEMENT MARKER (BRIDGE)	EACH	8	0	0	0	0	0	0	0	0	0	0	0	0	0	0	8
X0321781	MECHANICAL SPLICE	EACH	182	12	10	20	10	20	10	20	20	10	10	10	20	10	10	0
X7011015	TRAFFIC CONTROL AND PROTECTION (EXPRESSWAYS)	L SUM	1	0.06	0.06	0.07	0.06	0.07	0.06	0.07	0.07	0.07	0.07	0.06	0.07	0.07	0.07	0.07
70103817	TRAFFIC CONTROL SURVEILLANCE, SPECIAL	CAL DA	3	0	0	0	0	0	0	0	0	0	0	0	0	0	0	1.0
X7015050	PORTABLE CHANGEABLE MESSAGE SIGN	CAL MO	1.5	0	0	0	0	0	0	0	0	0	0	0	0	0	0	1.5
Z0016002	DECK SLAB REPAIR (FULL DEPTH, TYPE ID)	SO YD	12	0	0	0	0	0	0	0	0	0	0	0	0	0	0	12
Z0016200	DECK SLAB REPAIR (PARTIAL)	SO YD	35	0	0	0	0	0	0	0	0	0	0	0	0	0	0	35
Z0047300	PROTECTIVE SHIELD	SO YD	166	0	0	0	0	0	0	0	0	0	0	0	0	0	0	166

\* SPECIALTY ITEMS

ILLINOIS DEPARTMENT OF TRANSPORTATION

REVISIONS	
NAME	DATE

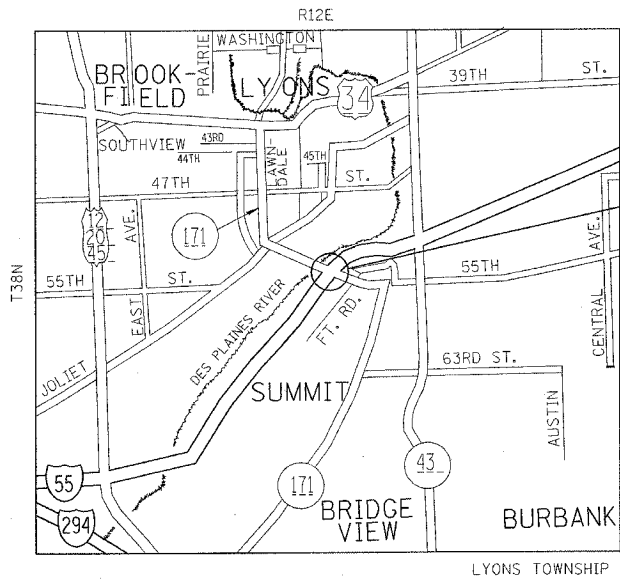
SUMMARY OF QUANTITIES

SCALE  
DATE

DRAWN BY  
CHECKED BY

F.A. No.	SECTION	COUNTY	TOTAL SHEETS	SHEET NO.
Var.	2004-1131	COOK	20	4
STA.	TO STA.			
FED. ROAD DIST. NO. 1   ILLINOIS FED. AID PROJECT				

CONTRACT NO. 62869



Location 1  
SN: 016-1026

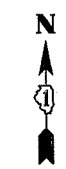


### LOCATION 1

IL 171 SB RAMP TO I-55 (STEVENSON)  
1994 ADT = 13,300

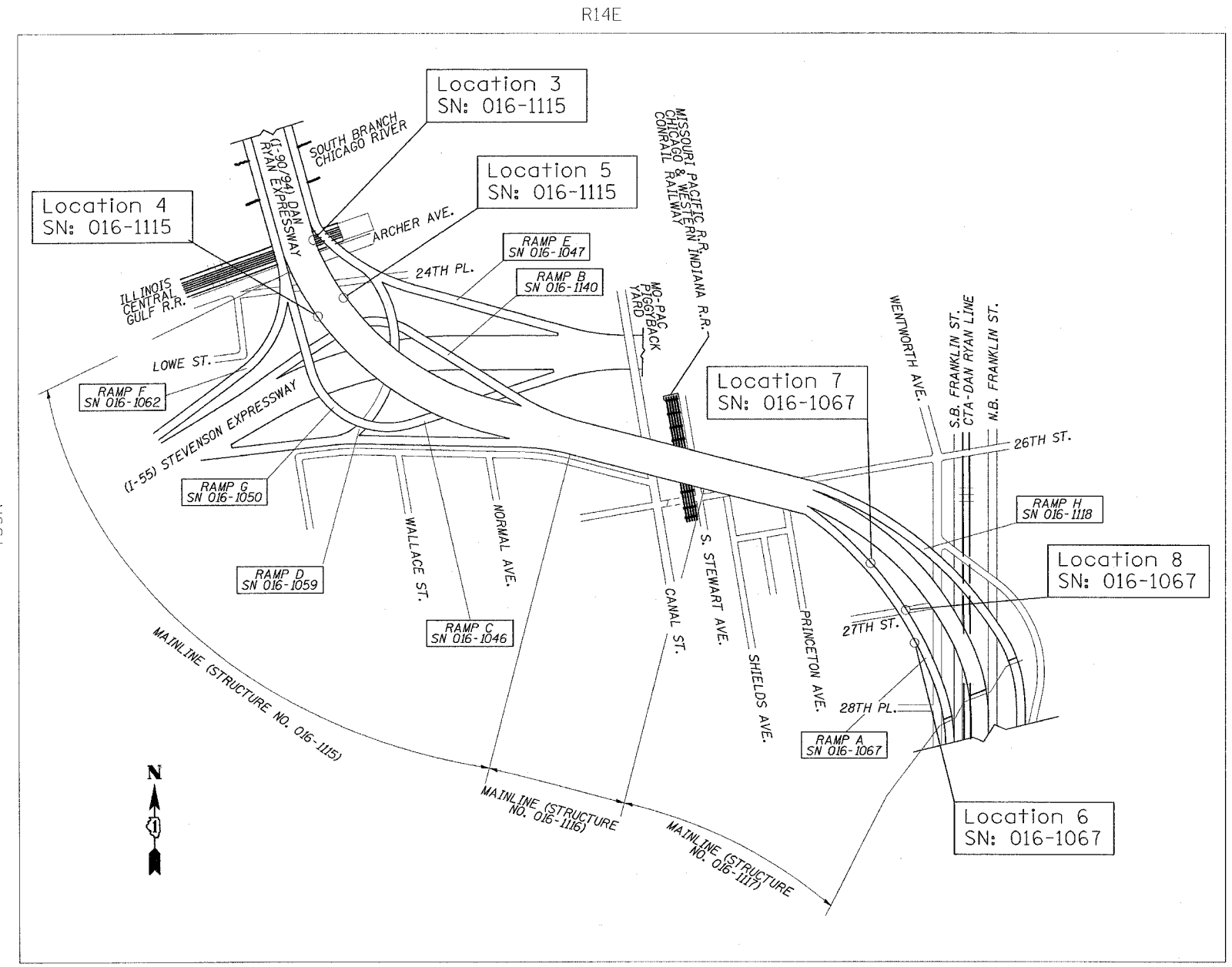


Location 2  
SN: 016-0026



### LOCATION 2

I-55 WB (STEVENSON) at WESTERN AVE.  
2002 ADT = 150,400  
SPEED LIMIT = 55 MPH



### LOCATIONS 3-5

I-90/94 ELEV. (DAN RYAN)  
SOUTH BRANCH CHICAGO RIVER TO CANAL ST.  
2002 ADT = 238,100  
SPEED LIMIT = 55 MPH

### LOCATIONS 6-8

I-90/94 SB DAN RYAN (LOCALS)  
STEWART ST. TO 28TH PL.  
2002 ADT = 238,100  
SPEED LIMIT = 55 MPH

REVISIONS	
NAME	DATE

ILLINOIS DEPARTMENT OF TRANSPORTATION

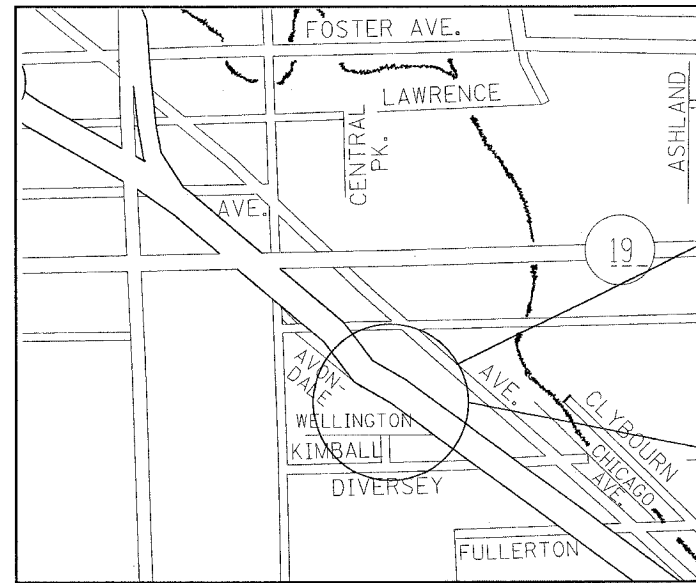
## LOCATION MAPS

SCALE: VERT. \_\_\_\_\_  
HORIZ. \_\_\_\_\_  
DATE 4/18/2005

DRAWN BY \_\_\_\_\_  
CHECKED BY \_\_\_\_\_

F.A. RTE.	SECTION	COUNTY	TOTAL SHEETS	SHEET NO.
Var.	2004-113I	COOK	20	5
STA.	TO STA.			
FED. ROAD DIST. NO.   ILLINOIS FED. AID PROJECT				

CONTRACT NO. 62869

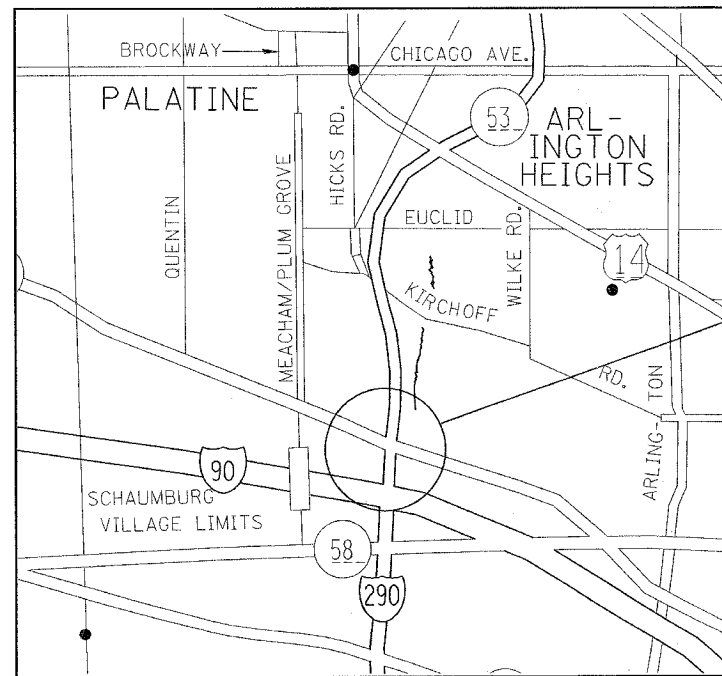


Locations 9-12  
SN: 016-1109

Location 13  
SN: 016-0120

### LOCATIONS 9-13

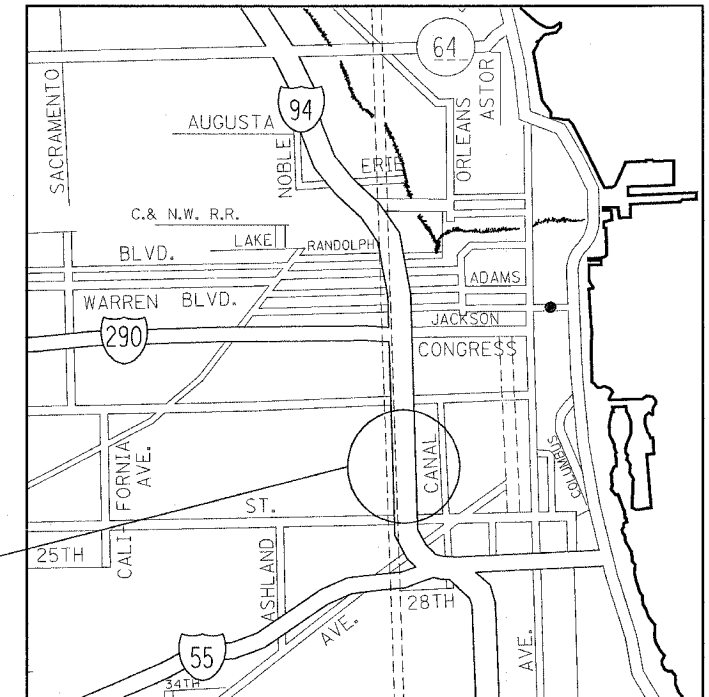
I-90/94 NWB (KENNEDY) at KIMBALL AVE  
2002 ADT = 269,100  
SPEED LIMIT = 55 MPH



Location 14  
SN: 016-2133

### LOCATION 14

IL. ROUTE 53 at IL. ROUTE 62  
2003 ADT = 124,700  
SPEED LIMIT = 55 MPH



Location 15  
SN: 016-1111

### LOCATION 15

I-90/94 SOUTHBOUND ELEV. (DAN RYAN)  
16th STREET TO 18th STREET  
2002 ADT = 295,600  
SPEED LIMIT = 55 MPH

REVISIONS	
NAME	DATE

ILLINOIS DEPARTMENT OF TRANSPORTATION

## LOCATION MAPS

SCALE: VERT.  
HORIZ.  
DATE 4/18/2005

DRAWN BY  
CHECKED BY

\*REF-

\*REF-  
\*REF-  
\*REF-

F.A. RTE.	SECTION	COUNTY	TOTAL SHEETS	SHEET NO.
Var.	2004-113I	COOK	20	6
STA.		TO STA.		
FED. ROAD DIST. NO. 1		ILLINOIS FED. AID PROJECT		

CONTRACT NO. 62869

LOCATION	STRUCTURE NUMBER	FACILITY CARRIED	FEATURE CROSSED	LOCATION OF REPAIR	TYPE OF REPAIR
1	016-1026	IL 171 SB RAMP TO I-55 (STEVENSON)	I-55 AND THE DES PLAINES RIVER	NORTH PARAPET WAL 7' SOUTH OF PIER #42	PARAPET REPAIR - PARTIAL HEIGHT
2	016-0026	I-55 WB (STEVENSON)	WESTERN AVE. VIADUCT	SOUTH WALL BETWEEN PIERS 18 & 19	PARAPET REPAIR - FULL HEIGHT
3	016-1115	I-90/94 ELEV. DAN RYAN	S BRANCH CHICAGO RIVER AND BANK TO CANAL ST	WEST WALL BETWEEN PIERS 21 & 22	PARAPET REPAIR - FULL HEIGHT
4	016-1115	I-90/94 ELEV. DAN RYAN	S BRANCH CHICAGO RIVER AND BANK TO CANAL ST	WEST WALL AT PIER #14	PARAPET REPAIR - FULL HEIGHT
5	016-1115	I-90/94 ELEV. DAN RYAN	S BRANCH CHICAGO RIVER AND BANK TO CANAL ST	EAST WALL AT PIER #14	PARAPET REPAIR - FULL HEIGHT
6	016-1067	SB DAN RYAN LOCALS	STEWART ST TO 28TH PL	WEST WALL SOUTH OF PIER #A-8	PARAPET REPAIR - FULL HEIGHT
7	016-1067	SB DAN RYAN LOCALS	STEWART ST TO 28TH PL	EAST WALL SOUTH OF PIER #A-12	PARAPET REPAIR - FULL HEIGHT
8	016-1067	SB DAN RYAN LOCALS	STEWART ST TO 28TH PL	EAST WALL BETWEEN PIERS A-9 AND A-10	PARAPET REPAIR - FULL HEIGHT
9	016-1109	I-90/94 NWB KENNEDY	KIMBALL AVE.	NORTH WALL AT PIER #2	PARAPET REPAIR - FULL HEIGHT
10	016-1109	I-90/94 NWB KENNEDY	KIMBALL AVE.	NORTH WALL NEAR EAST ABUTMENT	PARAPET REPAIR - FULL HEIGHT
11	016-1109	I-90/94 NWB KENNEDY	KIMBALL AVE.	SOUTH WALL AT WEST ABUTMENT	PARAPET REPAIR - FULL HEIGHT
12	016-1109	I-90/94 NWB KENNEDY	KIMBALL AVE.	SOUTH WALL EAST OF WEST ABUTMENT	PARAPET REPAIR - FULL HEIGHT
13	016-0120	I-90/94 SEB & REVERSIBLES KENNEDY	KIMBALL AVE.	NORTH WALL DIRECTLY BEHIND LOCATION 12	PARAPET REPAIR - FULL HEIGHT
14	016-2133	IL. ROUTE 53	IL. ROUTE 62	WEST WALL	PARAPET REPAIR - FULL HEIGHT
15	016-1111	I-90/94 ELEVATED (DAN RYAN)	16th STREET TO 18th STREET	LANE 3	BRIDGE DECK PATCHING

REVISIONS	
NAME	DATE

ILLINOIS DEPARTMENT OF TRANSPORTATION

LOCATION &  
DESCRIPTION  
OF REPAIRS

SCALE: VERT.  
HORIZ.  
DATE 4/18/2005

DRAWN BY  
CHECKED BY

14:43:37 04/18/2005

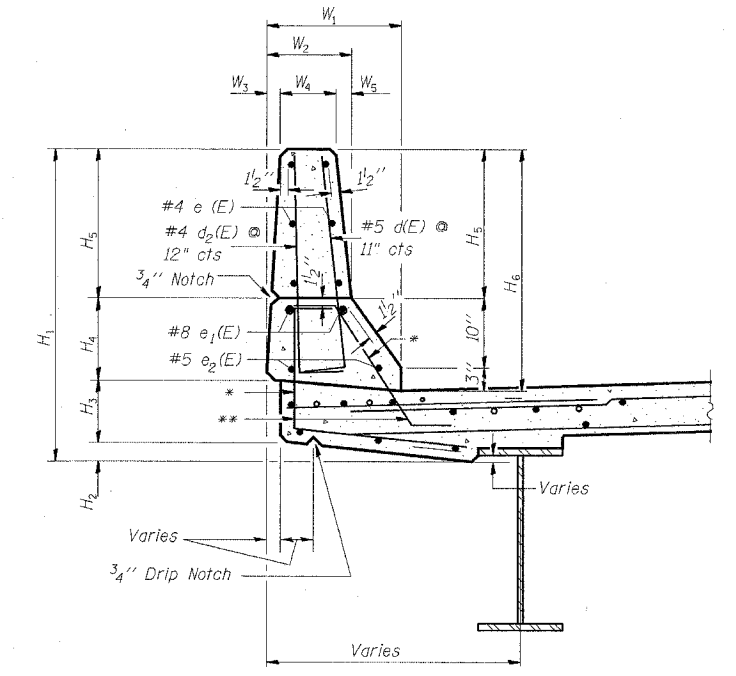
REF-  
REF-  
REF-

F.A. RTE.	SECTION	COUNTY	TOTAL SHEETS	SHEET NO.
Var.	2004-1131	COOK	20	7
STA.		TO STA.		
FED. ROAD DIST. NO. 1		ILLINOIS FED. AID PROJECT		

CONTRACT NO. 62869

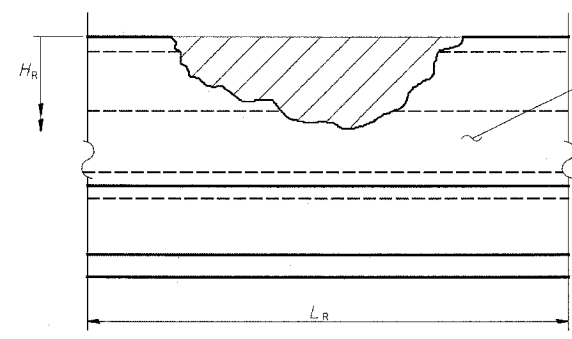
	016-1026	016-0026	016-1115			016-1067			016-1109				016-0120	016-2133
	Loc 1	Loc 2	Loc 3	Loc 4	Loc 5	Loc 6	Loc 7	Loc 8	Loc 9	Loc 10	Loc 11	Loc 12	Loc 13	Loc 14
L <sub>R</sub>	11'-0"	7'-0"	20'-0"	6'-0"	14'-0"	5'-0"	15'-0"	9'-0"	11'-0"	7'-0"	5'-0"	7'-0"	9'-0"	8'-0"
H <sub>R</sub>	1'-9"	3'-6 1/4"	3'-6"	3'-6"	3'-6"	3'-6"	3'-6"	3'-6"	3'-6"	3'-6"	3'-6"	3'-6"	3'-6"	3'-0"
W <sub>1</sub>	1'-7"	1'-7 3/4"	1'-7"	1'-7"	1'-7"	1'-7"	1'-7"	1'-7"	1'-7"	1'-7"	1'-7"	1'-7"	1'-7"	1'-8 3/4"
W <sub>2</sub>	1'-0"	1'-0 1/2"	1'-0"	1'-0"	1'-0"	1'-0"	1'-0"	1'-0"	1'-0"	1'-0"	1'-0"	1'-0"	1'-0"	1'-0"
W <sub>3</sub>	2 "	2 1/2"	2 1/2"	2 1/2"	2 1/2"	2 1/2"	2 1/2"	2 1/2"	2 1/2"	2 1/2"	2 1/2"	2 1/2"	2 1/2"	2"
W <sub>4</sub>	7 3/4"	7"	6 3/8"	6 3/8"	6 3/8"	6 3/8"	6 3/8"	6 3/8"	6 3/8"	6 3/8"	6 3/8"	6 3/8"	6 3/8"	10"
W <sub>5</sub>	2 1/4"	3"	3 1/8"	3 1/8"	3 1/8"	3 1/8"	3 1/8"	3 1/8"	3 1/8"	3 1/8"	3 1/8"	3 1/8"	3 1/8"	0"
H <sub>1</sub>	3'-9 1/2"	4'-4 1/2"	4'-6 1/2"	4'-6 1/2"	4'-6 1/2"	4'-6 1/2"	4'-6 1/2"	4'-6 1/2"	4'-6 1/2"	4'-6 1/2"	4'-6 1/2"	4'-6 1/2"	4'-6 1/2"	4'-0"
H <sub>2</sub>	4"	2 3/4"	5"	5"	5"	5"	5"	5"	5"	5"	5"	5"	5"	0"
H <sub>3</sub>	9 "	9"	9"	9"	9"	9"	9"	9"	9"	9"	9"	9"	9"	1'-0"
H <sub>4</sub>	11 1/2"	11 1/2"	11 1/2"	11 1/2"	11 1/2"	11 1/2"	11 1/2"	11 1/2"	11 1/2"	11 1/2"	11 1/2"	11 1/2"	11 1/2"	9"
H <sub>5</sub>	1'-9 "	2'-5 1/8"	2'-5"	2'-5"	2'-5"	2'-5"	2'-5"	2'-5"	2'-5"	2'-5"	2'-5"	2'-5"	2'-5"	2'-3"
H <sub>6</sub>	2'-10 "	3'-6 1/8"	3'-6"	3'-6"	3'-6"	3'-6"	3'-6"	3'-6"	3'-6"	3'-6"	3'-6"	3'-6"	3'-6"	3'-0"
#5 d(E)	—	8 - 3'-9"	22 - 3'-9"	—	16 - 3'-9"	6 - 3'-9"	17 - 3'-9"	—	12 - 3'-9"	—	—	—	—	—
#4 d <sub>2</sub> (E)	—	7 - 3'-9"	20 - 3'-9"	—	14 - 3'-9"	5 - 3'-9"	16 - 3'-9"	—	11 - 3'-9"	—	—	—	—	—
#4 e (E)	6 - 10'-9"	6 - 6'-9"	6 - 19'-9"	6 - 5'-9"	6 - 13'-9"	6 - 4'-9"	6 - 14'-9"	6 - 8'-9"	6 - 10'-9"	6 - 6'-9"	6 - 4'-9"	6 - 6'-9"	6 - 8'-9"	—
#8 e <sub>1</sub> (E)	—	2 - 6'-9"	2 - 19'-9"	2 - 5'-9"	2 - 13'-9"	2 - 4'-9"	2 - 14'-9"	2 - 8'-9"	2 - 10'-9"	2 - 6'-9"	2 - 4'-9"	2 - 6'-9"	2 - 8'-9"	—
#5 e <sub>2</sub> (E)	—	2 - 6'-9"	2 - 19'-9"	2 - 5'-9"	2 - 13'-9"	2 - 4'-9"	2 - 14'-9"	2 - 8'-9"	2 - 10'-9"	2 - 6'-9"	2 - 4'-9"	2 - 6'-9"	2 - 8'-9"	—
Reinforcement Bars Epoxy Coated (LBS)	43	144	380	66	268	95	290	100	208	78	55	78	100	0
Concrete Removal (CU YD)	0.6	0.8	2.2	0.8	1.0	0.4	1.5	1.2	1.2	0.9	0.4	0.9	1.2	1.0
Concrete (CU YD) Superstructure	0.6	0.9	2.6	0.8	1.8	0.6	2.0	1.2	1.5	0.9	0.6	0.9	1.2	1.0
Mechanical Splice (EACH)	12	10	20	10	20	10	20	20	10	10	10	20	10	0

(E) INDICATES EPOXY COATED



SECTION THRU PARAPET

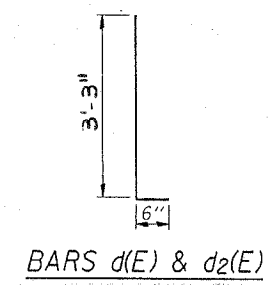
PARAPET DIMENSIONS AND BILL OF MATERIALS



FRONT FACE OF PARAPET

H<sub>r</sub> and L<sub>r</sub> indicate dimensions for concrete removal. Perimeters of concrete removal areas shall be saw cut 3/4" prior to removal of concrete.  
 NOTE: Concrete removal shall extend a minimum of 6" past damage or to joint if within 2'-0".  
 The cost of saw cuts shall be included in the cost of "Concrete Removal"

- Existing bars to be cleaned, straightened, and incorporated in new construction
- \*\* Note: If existing vertical rebar is missing, bars d(E) and d<sub>2</sub>(E) shall be straightened and epoxy grouted into existing concrete 9" deep. Cost shall be included in concrete superstructure



BARS d(E) & d<sub>2</sub>(E)

REVISIONS		NAME	DATE
NO.	DESCRIPTION		

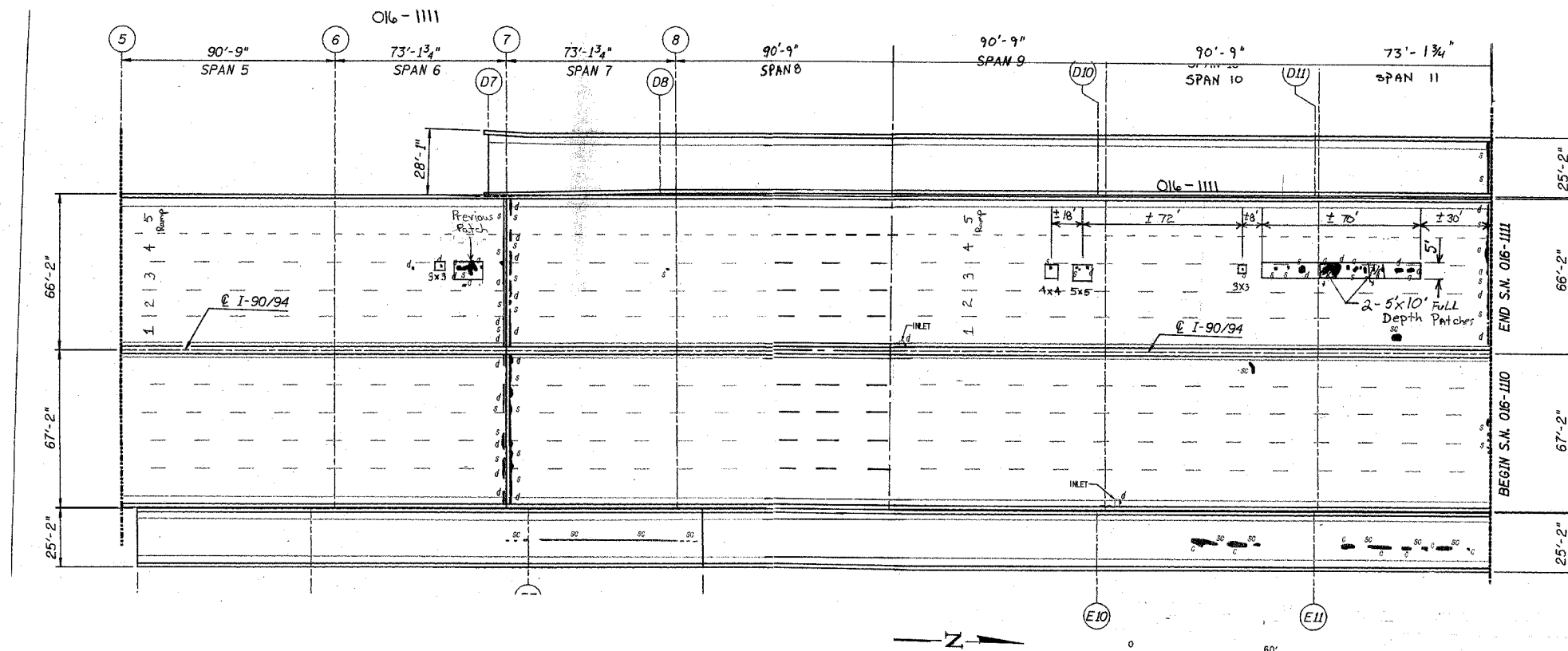
ILLINOIS DEPARTMENT OF TRANSPORTATION

PARAPET DIMENSIONS

SCALE: VERT.      DRAWN BY  
 HORIZ.              CHECKED BY  
 DATE 4/18/2005

F. A. DIST.	SECTION	COUNTY	TOTAL SHEETS	SHEET NO.
VAR	2004-113 I	COOK	20	8
STA.	TO STA.			
FED. ROAD DIST. NO. 7	ILLINOIS	FED. AID PROJECT		

CONTRACT NO. 62869



ALL PATCHES ARE PARTIAL DEPTH UNLESS SPECIFIED OTHERWISE OR AS DIRECTED BY THE ENGINEER

ILLINOIS DEPARTMENT OF TRANSPORTATION

LOCATION NO. 15 PATCHING

SN 016-1111

REVISIONS	
NAME	DATE

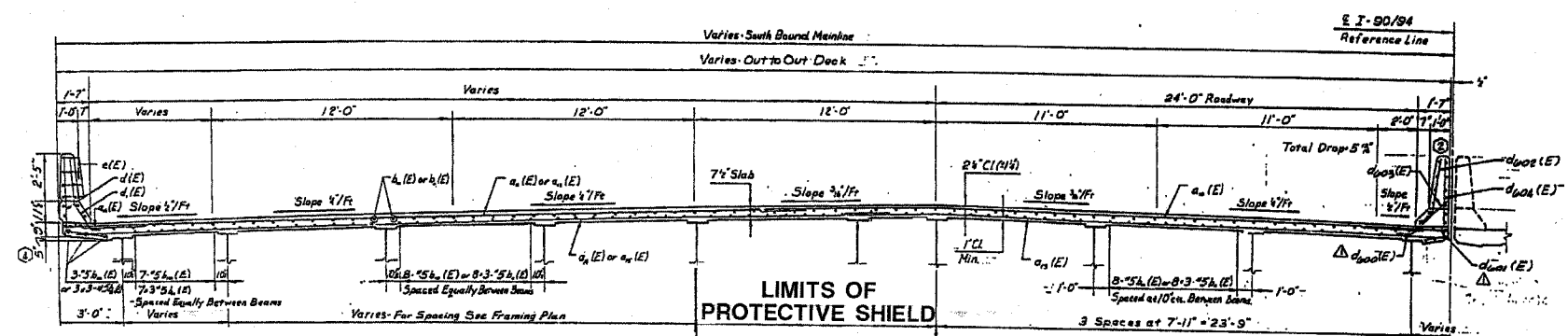
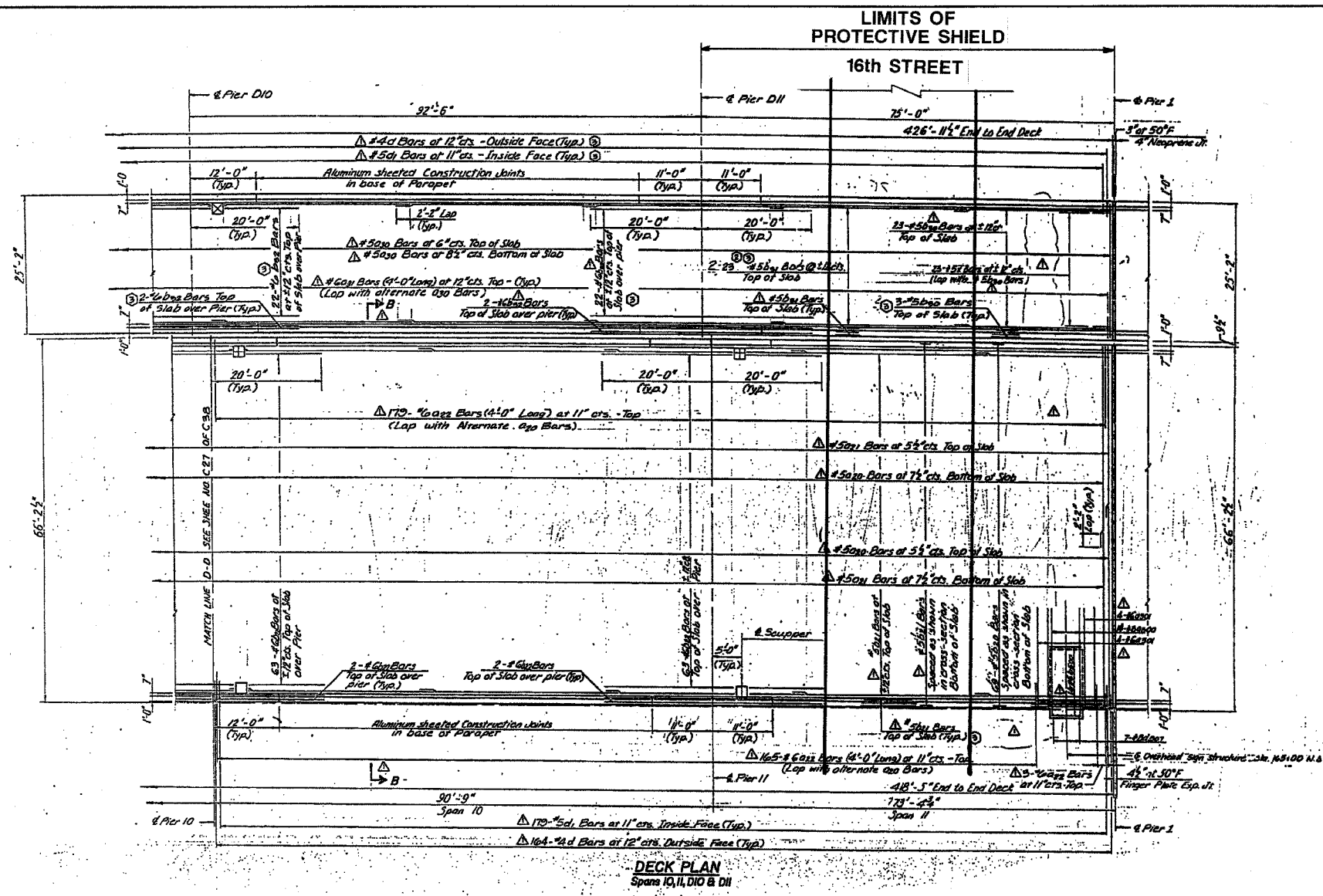
SCALE: VERT. HORIZ.  
DATE

DRAWN BY  
CHECKED BY



F. A. REL.	SECTION	COUNTY	TOTAL SHEETS	SHEET NO.
VAR	2004-1131	COOK	20	9
STA.	TO STA.			
FED. ROAD DIST. NO. 7	ILLINOIS	FED. AID PROJECT		

CONTRACT NO. 62869



SECTION A-A

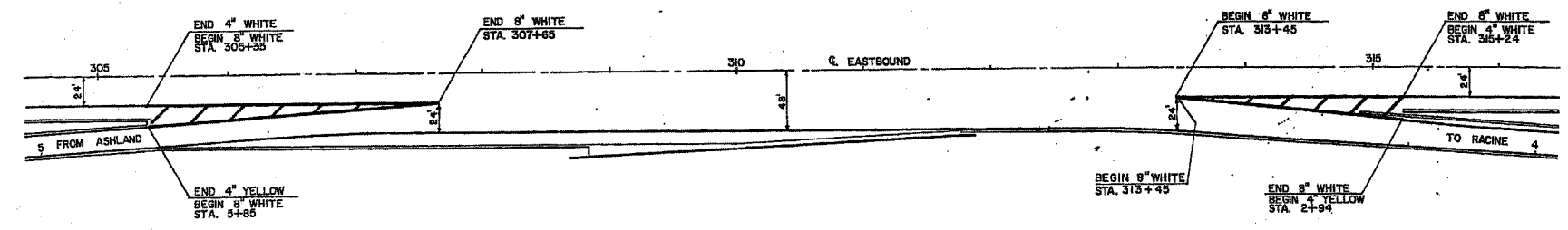
REVISIONS	
NAME	DATE

ILLINOIS DEPARTMENT OF TRANSPORTATION  
**LOCATION NO. 15 DETAILS  
 AND PROTECTIVE SHIELD LIMITS**

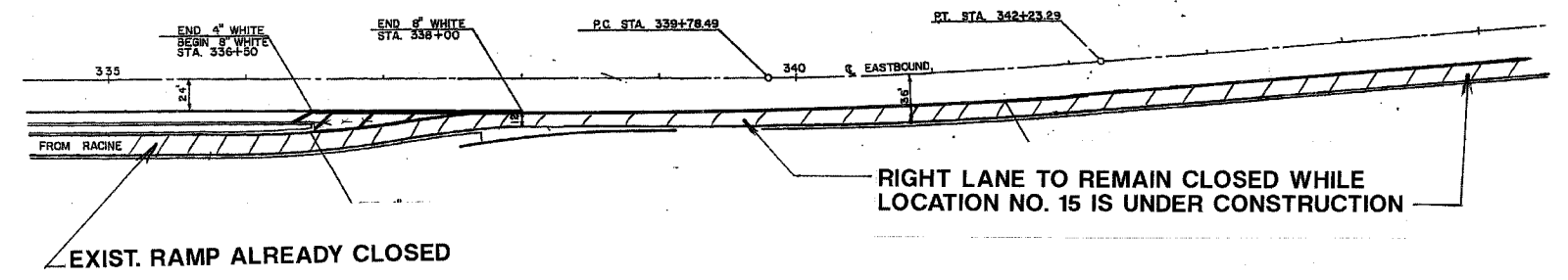
SCALE: VERT. \_\_\_\_\_  
 HORIZ. \_\_\_\_\_  
 DATE \_\_\_\_\_ DRAWN BY \_\_\_\_\_  
 CHECKED BY \_\_\_\_\_

SECTION	COUNTY	TOTAL SHEETS	SHEET NO.
VAR 2004-113 I	COOK	20	10
STA. TO STA.		FED. ROAD DIST. NO. 7 ILLINOIS FED. AID PROJECT	

CONTRACT NO. 62869



RACINE



**NOTES:**  
 ALL TANGENT AND TAPER LENGTHS AND SIGNING SHALL BE AS INDICATED IN THE APPLICABLE STATE STANDARDS.  
 ALL SAFETY BARRICADES SHALL BE 1/2 SPACED OF WHAT IS SHOWN ON THE APPLICABLE STATE STANDARDS.

ONLY TRAFFIC CONTROL ITEMS SHOWN ON THIS SHEET SHALL PERTAIN TO THIS CONTACT.

REVISIONS	
NAME	DATE

ILLINOIS DEPARTMENT OF TRANSPORTATION

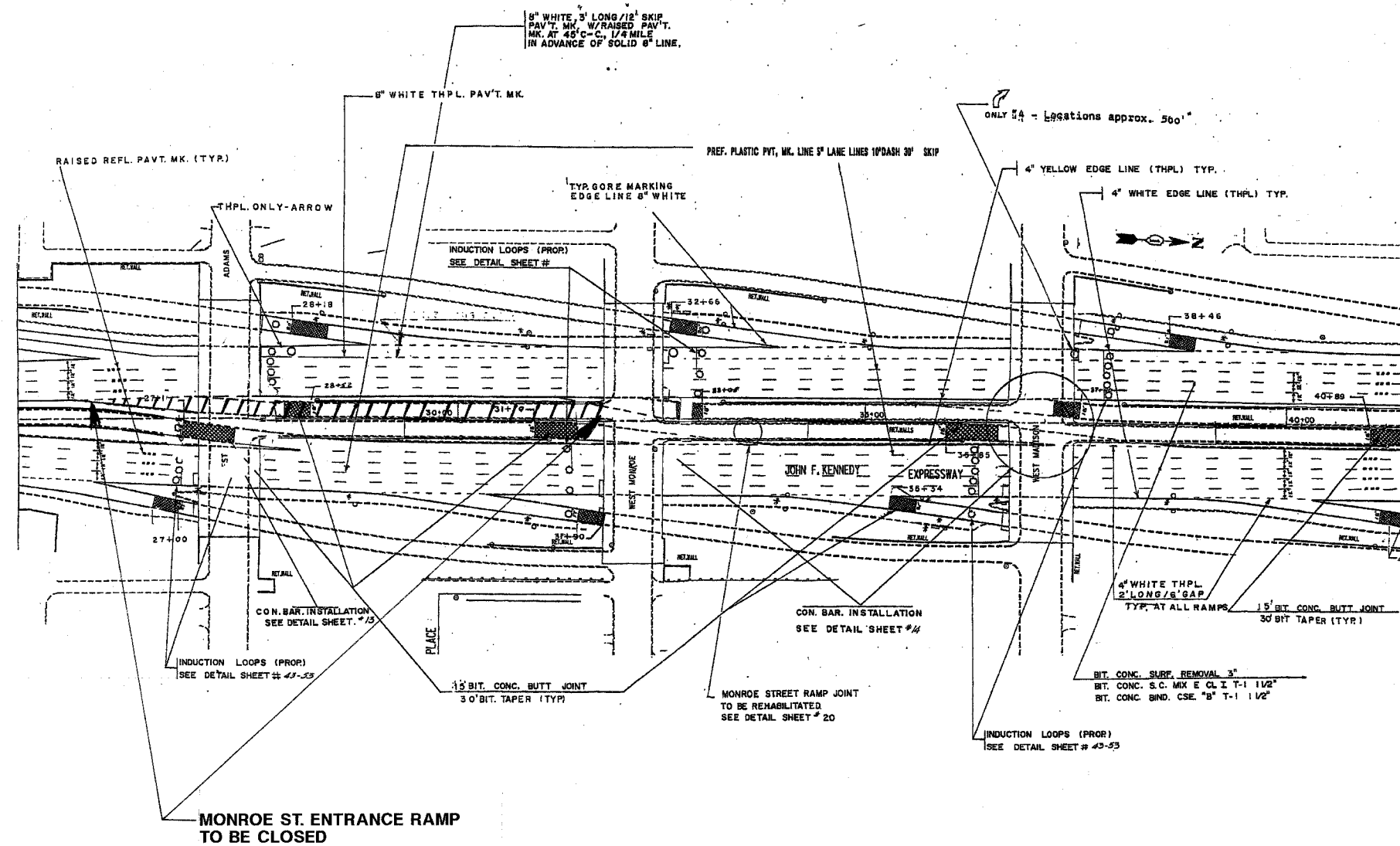
**LOCATION NO. 15**  
**TRAFFIC CONTROL AND PROTECTION**  
**I-290 EISENHOWER EXPRESSWAY**

SCALE: VERT. \_\_\_\_\_  
 HORIZ. \_\_\_\_\_

DATE \_\_\_\_\_ DRAWN BY \_\_\_\_\_  
 CHECKED BY \_\_\_\_\_

F.A. NO.	SECTION	COUNTY	TOTAL SHEETS	SHEET NO.
VAR 2004-113 I		COOK	20	11
STA.	TO STA.			
FED. ROAD DIST. NO. 7	ILLINOIS	FED. AID PROJECT		

CONTRACT NO. 62869



**NOTES:**  
 ALL TANGENT AND TAPER LENGTHS AND SIGNING SHALL BE AS INDICATED IN THE APPLICABLE STATE STANDARDS.  
 ALL SAFETY BARRICADES SHALL BE 1/2 SPACED OF WHAT IS SHOWN ON THE APPLICABLE STATE STANDARDS.

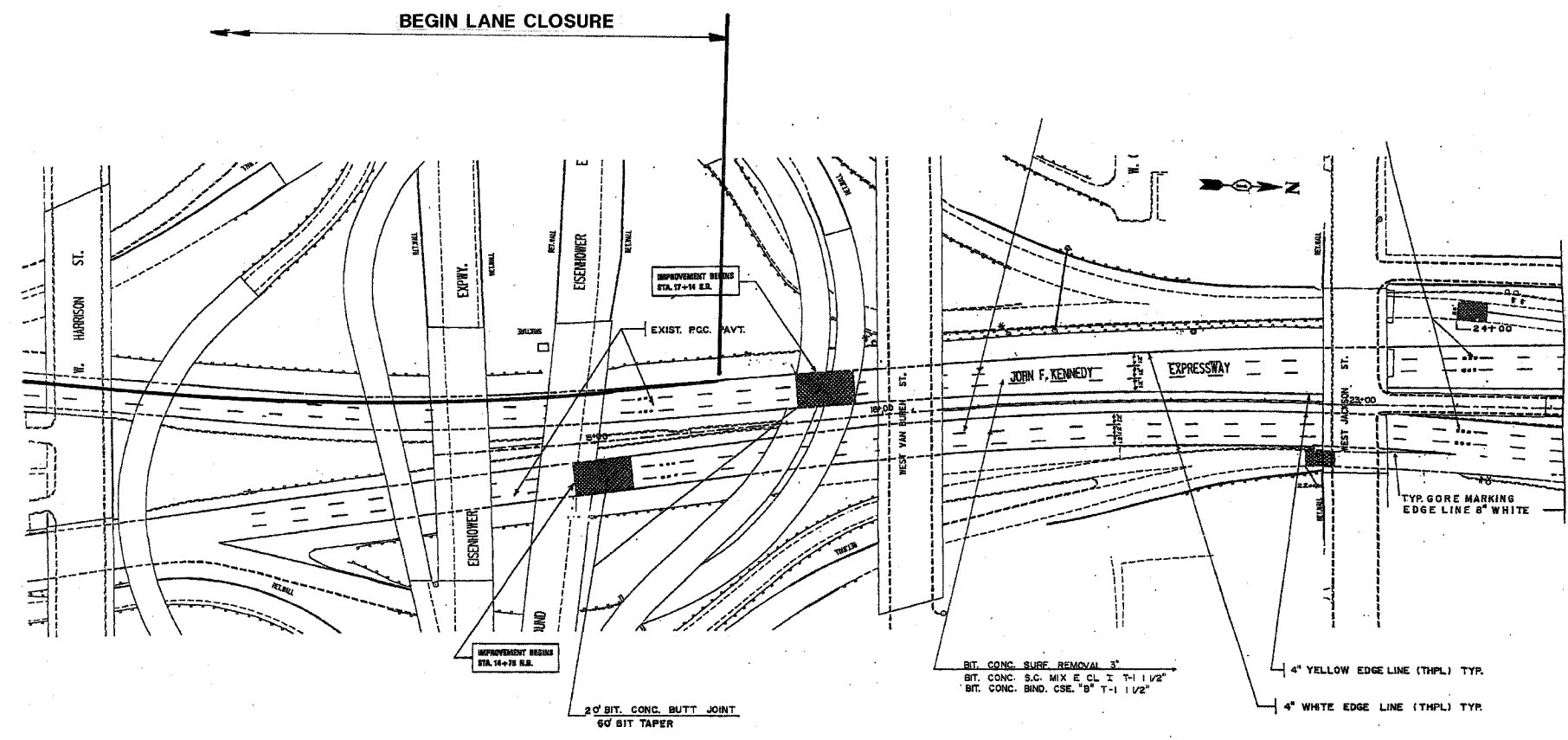
ONLY TRAFFIC CONTROL ITEMS SHOWN ON THIS SHEET SHALL PERTAIN TO THIS CONTACT.

REVISIONS	
NAME	DATE

ILLINOIS DEPARTMENT OF TRANSPORTATION  
 LOCATION NO. 15  
 TRAFFIC CONTROL AND PROTECTION  
 I-90/94 KENNEDY EXPRESSWAY  
 SCALE: VERT. \_\_\_\_\_ DRAWN BY \_\_\_\_\_  
 HORIZ. \_\_\_\_\_ CHECKED BY \_\_\_\_\_  
 DATE \_\_\_\_\_

F. & A. SEC.	SECTION	COUNTY	TOTAL SHEETS	SHEET NO.
VAR 2004-1131	2004-1131	Cook	20	12
STA.		TO STA.		
FED. ROAD DIST. NO. 7		ILLINOIS		FED. AID PROJECT

CONTRACT NO. 62869



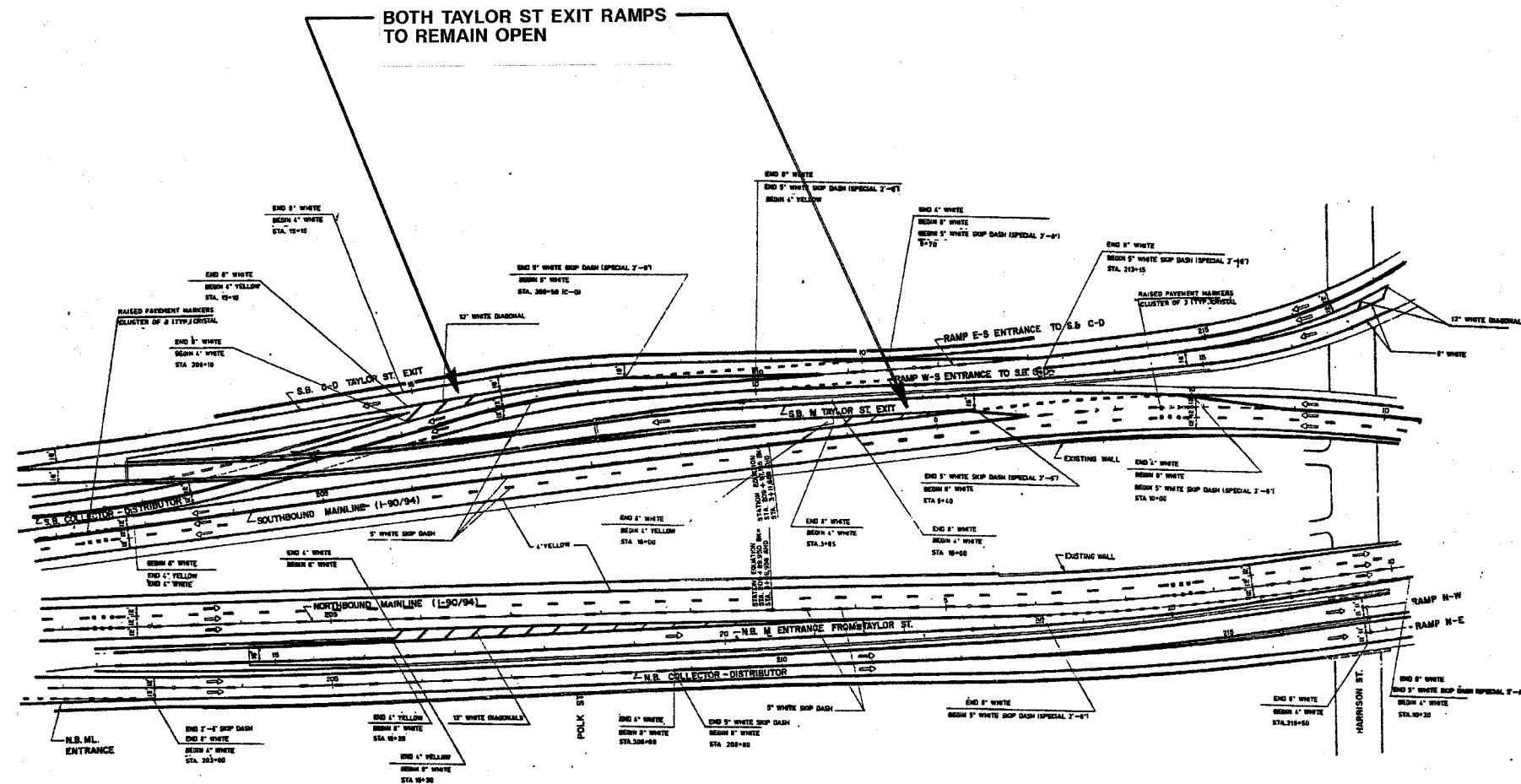
**NOTES:**  
**ALL TANGENT AND TAPER LENGTHS AND SIGNING SHALL BE AS INDICATED IN THE APPLICABLE STATE STANDARDS.**  
**ALL SAFETY BARRICADES SHALL BE 1/2 SPACED OF WHAT IS SHOWN ON THE APPLICABLE STATE STANDARDS.**

**ONLY TRAFFIC CONTROL ITEMS SHOWN ON THIS SHEET SHALL PERTAIN TO THIS CONTACT.**

REVISIONS	
NAME	DATE

ILLINOIS DEPARTMENT OF TRANSPORTATION  
**LOCATION NO. 15**  
**TRAFFIC CONTROL AND PROTECTION**  
**I-90/94 KENNEDY EXPRESSWAY**  
 SCALE: VERT.      DRAWN BY  
           HORIZ.      CHECKED BY  
 DATE

CONTRACT NO. 62869



**NOTES:**  
 ALL TANGENT AND TAPER LENGTHS AND SIGNING SHALL BE AS INDICATED IN THE APPLICABLE STATE STANDARDS.  
 ALL SAFETY BARRICADES SHALL BE 1/2 SPACED OF WHAT IS SHOWN ON THE APPLICABLE STATE STANDARDS.

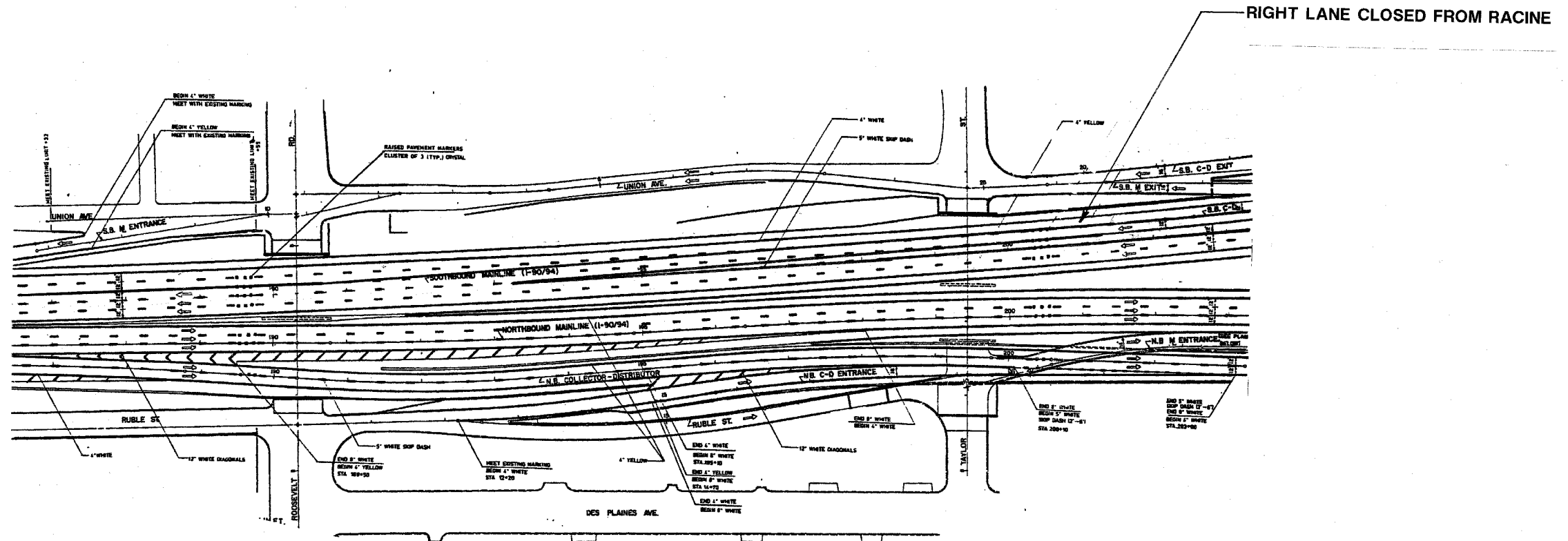
ONLY TRAFFIC CONTROL ITEMS SHOWN ON THIS SHEET SHALL PERTAIN TO THIS CONTACT.

REVISIONS	
NAME	DATE

ILLINOIS DEPARTMENT OF TRANSPORTATION  
 LOCATION NO. 15  
 TRAFFIC CONTROL AND PROTECTION  
 I-90/94 DAN RYAN EXPRESSWAY  
 SCALE: VERT. HORIZ.  
 DATE DRAWN BY CHECKED BY

F. A. DIST.	SECTION	COUNTY	TOTAL SHEETS	SHEET NO.
VAR 2004-113 I	Cook		20	14
STA.		TO STA.		
FED. ROAD DIST. NO. 1		ILLINOIS	FED. AID PROJECT	

CONTRACT NO. 62869



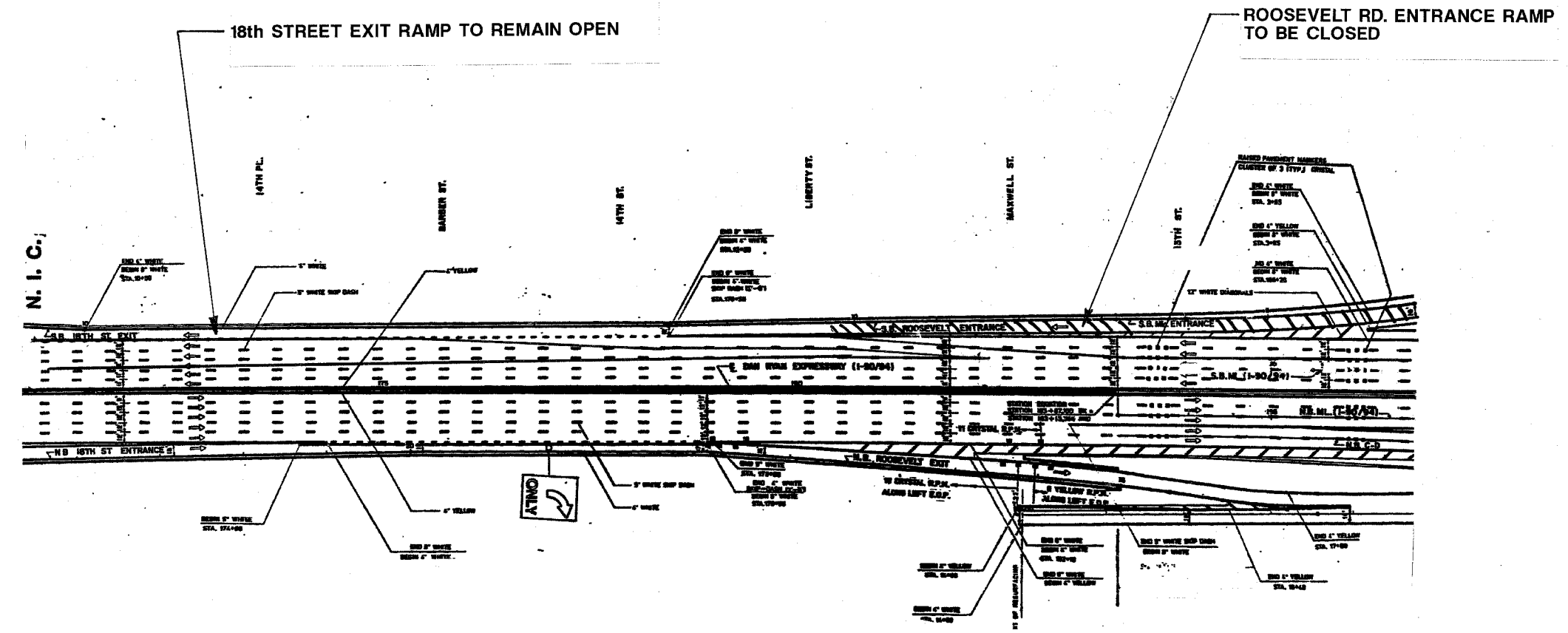
**NOTES:**  
**ALL TANGENT AND TAPER LENGTHS AND SIGNING SHALL BE AS INDICATED IN THE APPLICABLE STATE STANDARDS.**  
**ALL SAFETY BARRICADES SHALL BE 1/2 SPACED OF WHAT IS SHOWN ON THE APPLICABLE STATE STANDARDS.**

**ONLY TRAFFIC CONTROL ITEMS SHOWN ON THIS SHEET SHALL PERTAIN TO THIS CONTACT.**

REVISIONS	
NAME	DATE

ILLINOIS DEPARTMENT OF TRANSPORTATION  
**LOCATION NO. 15**  
**TRAFFIC CONTROL AND PROTECTION**  
**I-90/94 DAN RYAN EXPRESSWAY**  
 SCALE: VERT. \_\_\_\_\_  
 HORIZ. \_\_\_\_\_  
 DATE \_\_\_\_\_ DRAWN BY \_\_\_\_\_  
 CHECKED BY \_\_\_\_\_

CONTRACT NO. 62869



**NOTES:**  
 ALL TANGENT AND TAPER LENGTHS AND SIGNING SHALL BE AS INDICATED IN THE APPLICABLE STATE STANDARDS.  
 ALL SAFETY BARRICADES SHALL BE 1/2 SPACED OF WHAT IS SHOWN ON THE APPLICABLE STATE STANDARDS.

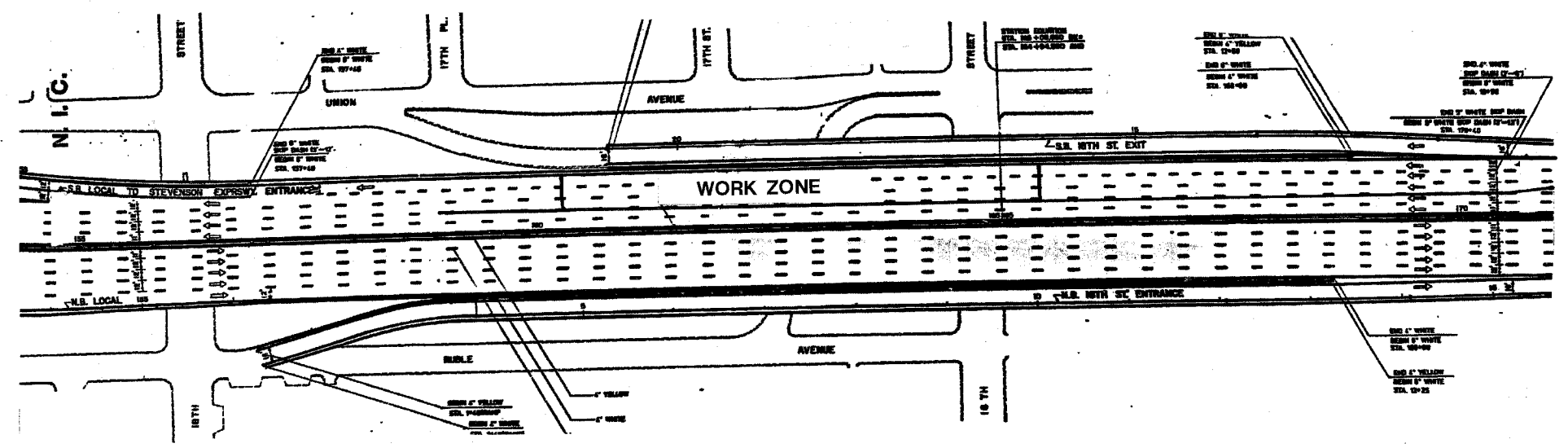
ONLY TRAFFIC CONTROL ITEMS SHOWN ON THIS SHEET SHALL PERTAIN TO THIS CONTRACT

REVISIONS	
NAME	DATE

ILLINOIS DEPARTMENT OF TRANSPORTATION  
 LOCATION NO. 15  
**TRAFFIC CONTROL AND PROTECTION**  
 I-90/94 DAN RYAN EXPRESSWAY  
 SCALE: VERT. \_\_\_\_\_  
 HORIZ. \_\_\_\_\_  
 DATE \_\_\_\_\_ DRAWN BY \_\_\_\_\_  
 CHECKED BY \_\_\_\_\_

DATE	SECTION	COUNTY	TOTAL SHEETS	SHEET NO.
VAR 2004-13 I		COOK	20	16
STA.		TO STA.		
FED. ROAD DIST. NO. 7		ILLINOIS		FED. AID PROJECT

CONTRACT NO. 62869



**NOTES:**  
 ALL TANGENT AND TAPER LENGTHS AND SIGNING SHALL BE AS INDICATED IN THE APPLICABLE STATE STANDARDS.  
 ALL SAFETY BARRICADES SHALL BE 1/2 SPACED OF WHAT IS SHOWN ON THE APPLICABLE STATE STANDARDS.

ONLY TRAFFIC CONTROL ITEMS SHOWN ON THIS SHEET SHALL PERTAIN TO THIS CONTRACT

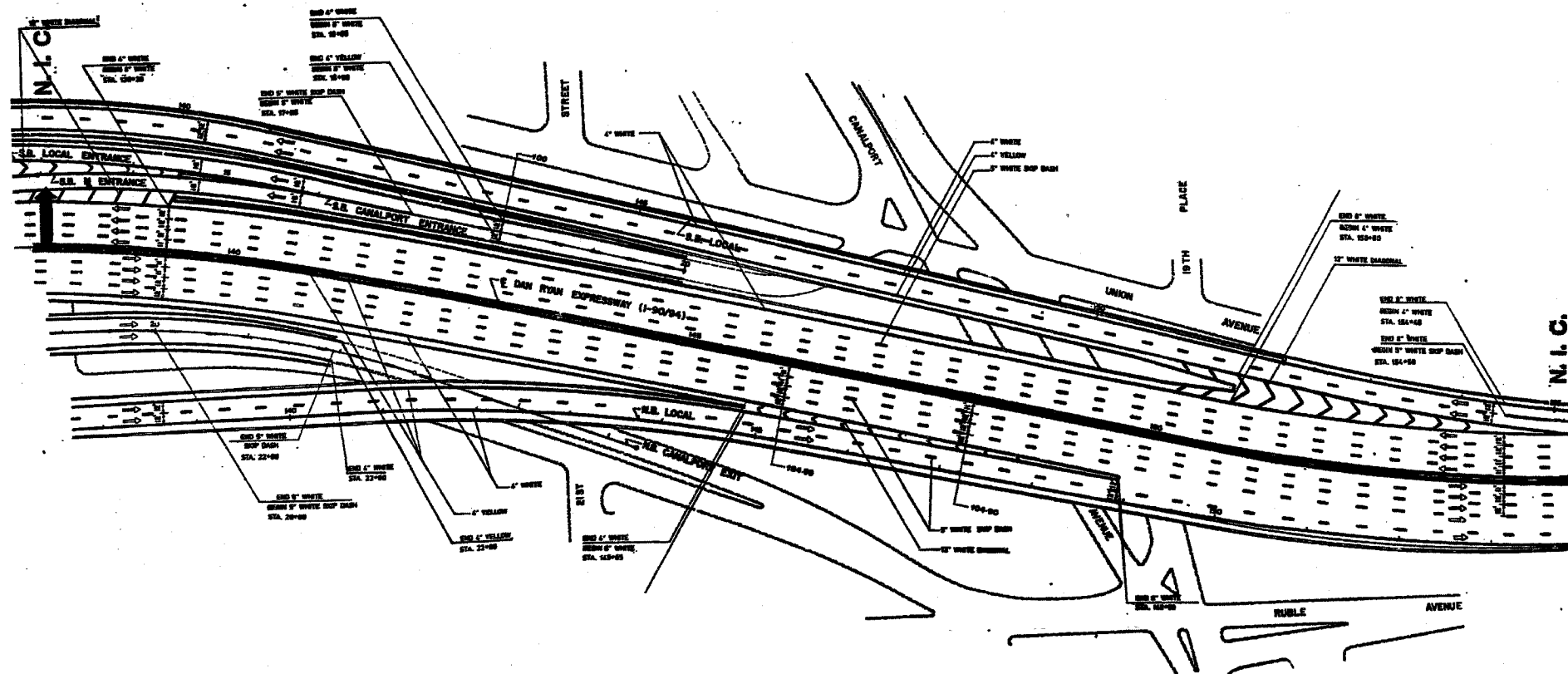
REVISIONS	
NAME	DATE

ILLINOIS DEPARTMENT OF TRANSPORTATION  
 LOCATION NO. 15  
 TRAFFIC CONTROL AND PROTECTION  
 I-90/94 DAN RYAN EXPRESSWAY  
 SCALE: VERT.      DRAWN BY  
           HORIZ.      CHECKED BY  
 DATE



SECTION	COUNTY	TOTAL SHEETS	SHEET NO.
VAR 2004-1131	COOK	20	17
STA. TO STA.		FED. ROAD DIST. NO. 7 ILLINOIS	
		FED. AID PROJECT	

CONTRACT NO. 62869



ONLY TRAFFIC CONTROL ITEMS SHOWN ON THIS SHEET SHALL PERTAIN TO THIS CONTRACT

REVISIONS	
NAME	DATE

ILLINOIS DEPARTMENT OF TRANSPORTATION

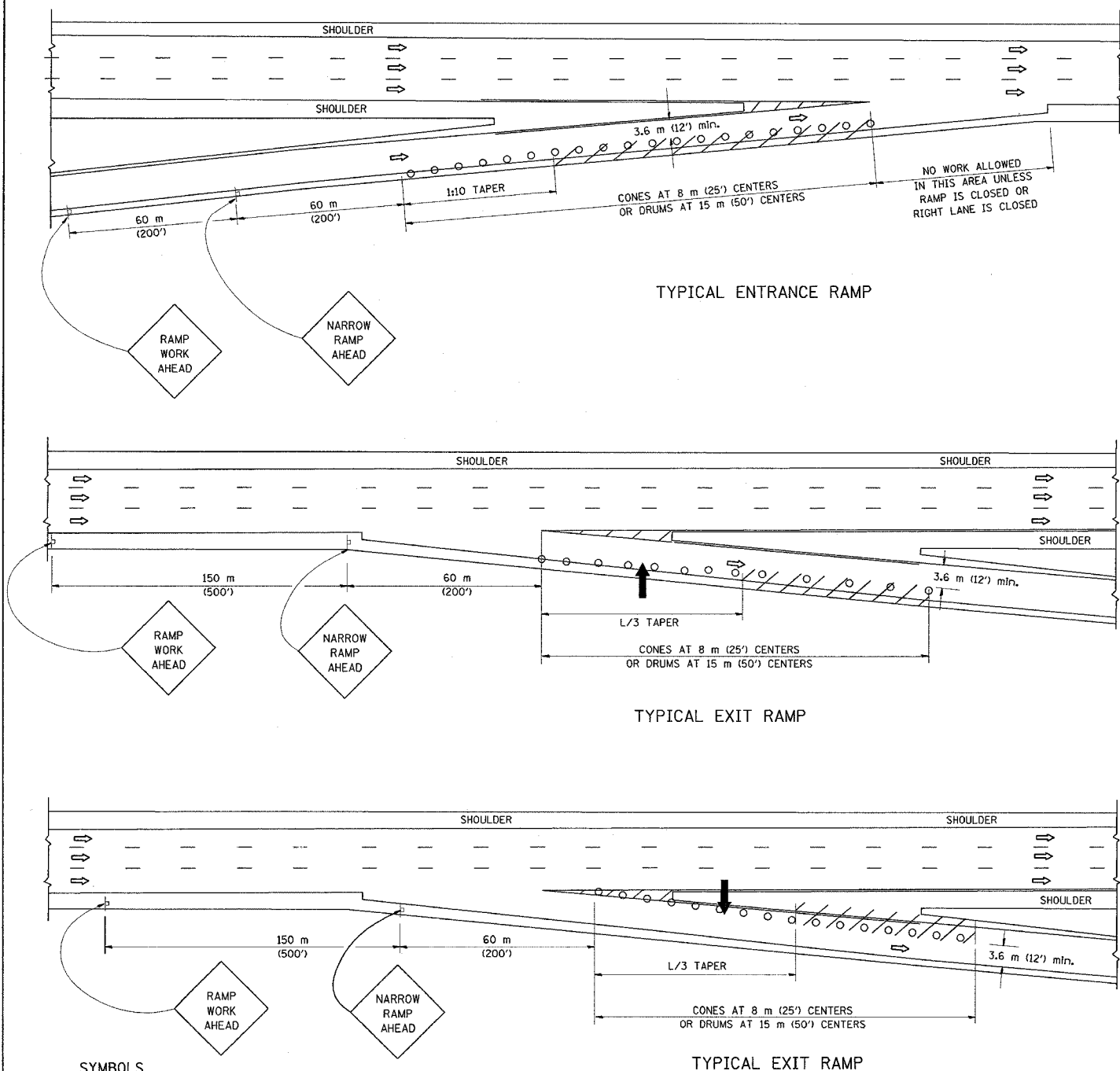
LOCATION NO. 15  
TRAFFIC CONTROL AND PROTECTION

SCALE: VERT. HORIZ.  
DATE

DRAWN BY  
CHECKED BY



### PARTIAL RAMP CLOSURE DETAILS



**SYMBOLS**

- ARROWBOARD
- WORK AREA
- SIGN ON PORTABLE OR PERMANENT SUPPORT
- FLAGGER WITH CONTROL SIGN
- DRUM WITH MONO-DIRECTIONAL STEADY BURNING LIGHT
- CONES - 700 (28) IN HEIGHT

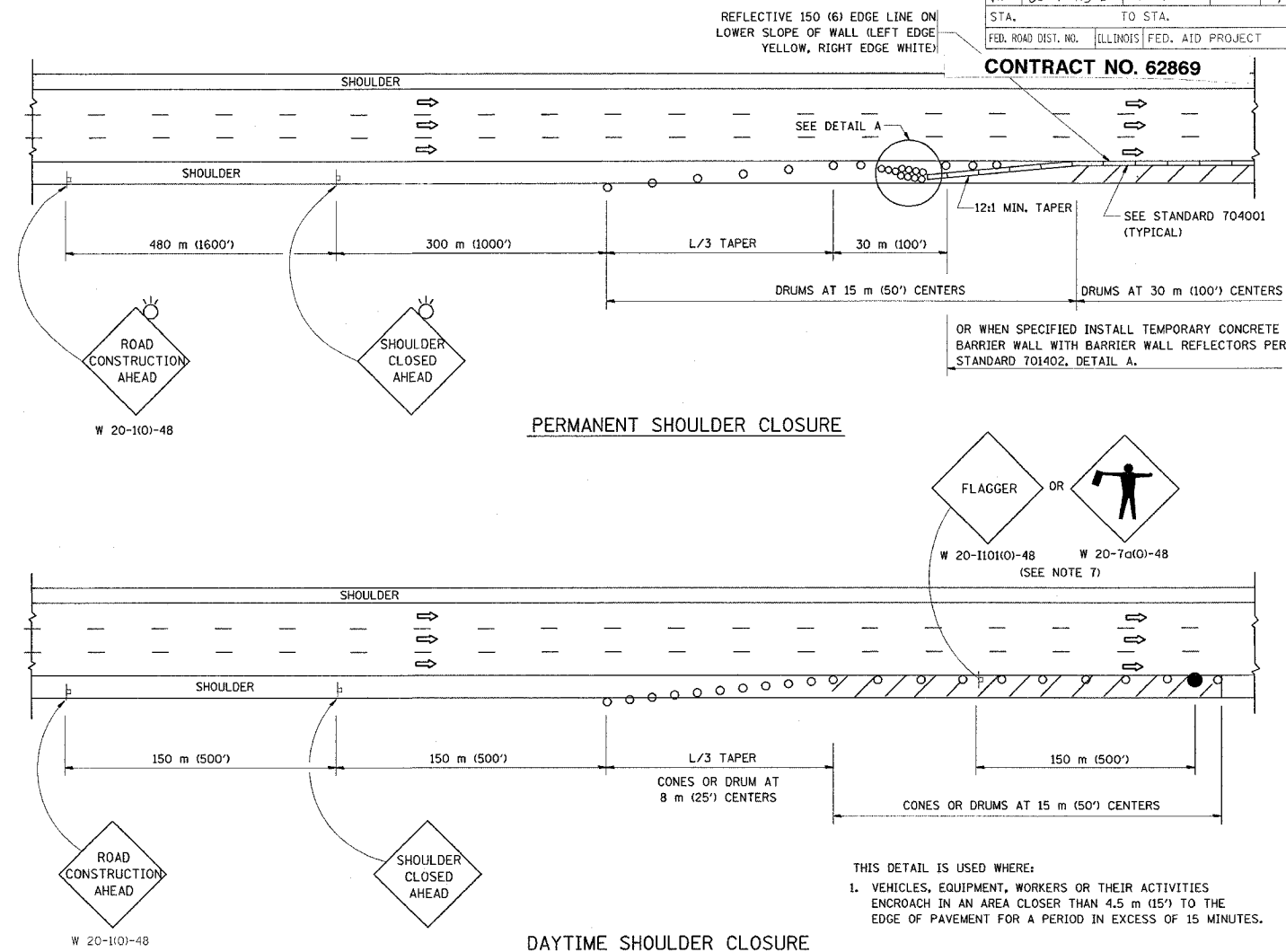
**GENERAL NOTES**

1. THE "L" DISTANCE EQUALS:  

SPEED LIMIT	FORMULAS
80 km/h (45 mph)	METRIC $L=0.65(W)(S)$
OR GREATER:	ENGLISH $L=(W)(S)$

W = WIDTH OF OFFSET IN METERS (FEET)  
 S = NORMAL POSTED SPEED KM/H (MPH)
2. PLASTIC DRUMS WITH HIGH PERFORMANCE REFLECTIVE SHEETING AND STEADY BURNING LIGHTS ARE REQUIRED FOR ALL NIGHTTIME CLOSURES.
3. ALL SIGNS SHALL BE POST MOUNTED IF THE CLOSURE TIME EXCEEDS FOUR DAYS.
4. FLASHING LIGHTS SHALL BE USED DURING THE HOURS OF DARKNESS AND SHALL BE INSTALLED ABOVE THE FIRST TWO SETS OF SIGNS.

### SHOULDER CLOSURE DETAILS

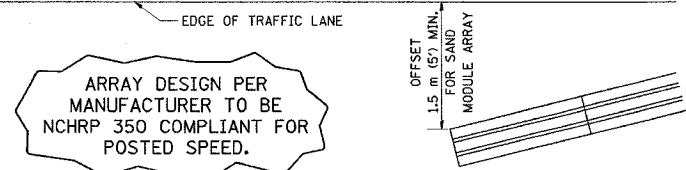


F.A. NO.	SECTION	COUNTY	TOTAL SHEETS	SHEET NO.
VAR	2004 113 I	Cook	20	19
STA.	TO STA.			
FED. ROAD DIST. NO.	ILLINOIS	FED. AID PROJECT		

**CONTRACT NO. 62869**

OR WHEN SPECIFIED INSTALL TEMPORARY CONCRETE BARRIER WALL WITH BARRIER WALL REFLECTORS PER STANDARD 701402, DETAIL A.

THIS DETAIL IS USED WHERE:  
 1. VEHICLES, EQUIPMENT, WORKERS OR THEIR ACTIVITIES ENCRUCH IN AN AREA CLOSER THAN 4.5 m (15') TO THE EDGE OF PAVEMENT FOR A PERIOD IN EXCESS OF 15 MINUTES.



**DETAIL "A"**  
 IMPACT ATTENUATOR, TEMPORARY  
 (SEE NOTE 5)

5. THE IMPACT ATTENUATOR, TEMPORARY IS NOT REQUIRED WHEN THE TEMPORARY CONCRETE BARRIER WALL IS OUTSIDE THE CLEAR ZONE OR IS TIED INTO THE EXISTING GUARDRAIL. IF OFFSET IS LESS THAN 5 FEET USE "TRAFFIC BARRIER TERMINAL, TYPE III, TEMPORARY" DEVICE TO MEET NCHRP350 FOR POSTED SPEED.
6. AUTHORIZATION FROM THE DISTRICT'S BUREAU OF TRAFFIC IS REQUIRED FOR ALL FREEWAY CLOSURES.
7. THE FLAGGER AND FLAGGER SIGN ARE REQUIRED AT THE ABOVE WORK SITES WHEN:
  - a. FOUR OR MORE WORK VEHICLES ENTER THE TRAFFIC LANES IN A ONE HOUR PERIOD.
  - b. THE WORK AVTIVITY REQUIRES FREQUENT ENCRUCHMENT INTO THE LANE OPEN TO TRAFFIC.
 THE FLAGGER SHALL BE STATIONED APPROXIMATELY 30 m (100') TO 60 m (200') IN ADVANCE OF THE WORKERS.

ALL DIMENSIONS ARE IN MILLIMETERS (INCHES) UNLESS OTHERWISE SHOWN.

ILLINOIS DEPARTMENT OF TRANSPORTATION

**TRAFFIC CONTROL DETAILS FOR FREEWAY SHOULDER CLOSURES PARTIAL RAMP CLOSURES**

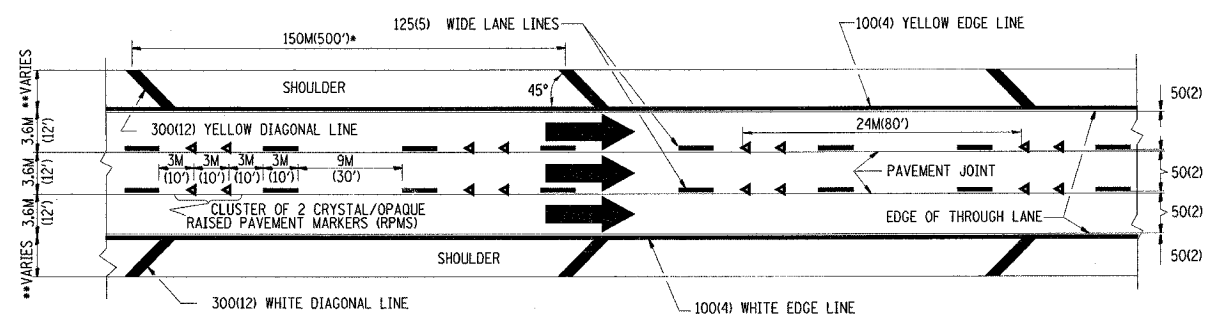
REVISIONS	
NAME	DATE
DWS	11/96
JAF	12/02
NCHRP 350	04/03

SCALE: NONE  
 DATE: 4/19/2005  
 DRAWN BY: DWS  
 DESIGNED BY: DWS  
 CHECKED BY: TC-17

F. A. NO.	SECTION	COUNTY	TOTAL SHEETS	SHEET NO.
111	2004-113 I	Cook	20	20
STA.	TO STA.			
FED. ROAD DIST. NO. 1	ILLINOIS	FED. AID PROJECT		

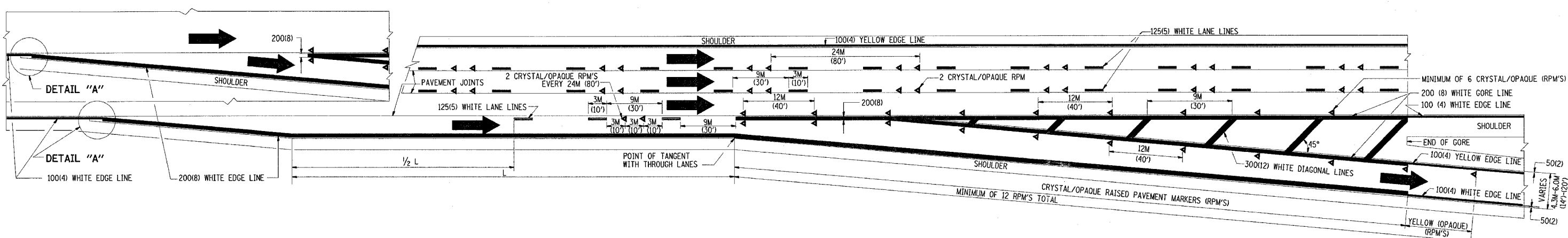
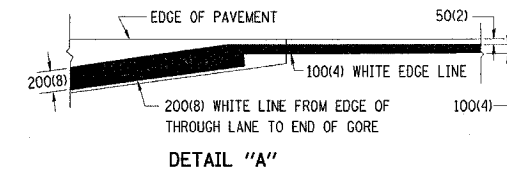
CONTRACT NO. 62869

- THE DIAGONAL LINES SHALL BE SPACED AT 12M (40') C-C ACROSS ALL STRUCTURES WHICH ARE 150M (500') OR LESS IN LENGTH
- THE DIAGONAL LINES ARE NOT REQUIRED ON SHOULDERS WHICH ARE 1.8M (6') OR LESS IN WIDTH

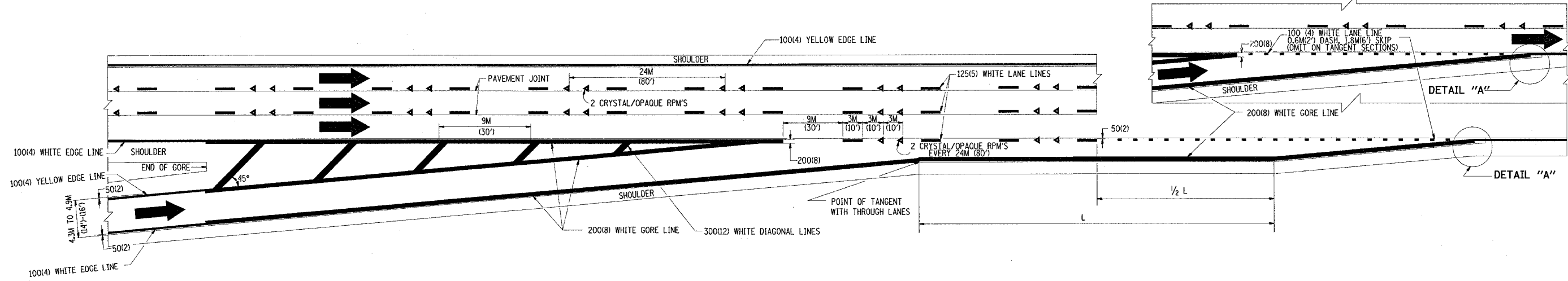


TYPICAL EDGE LINES & LANE LINES

- NOTES:
1. THERMO PLASTIC PAVEMENT MARKING LINE SHALL BE USED FOR THE EDGE LINES, GORE LINES, AND DIAGONAL LINES ON BITUMINOUS PAVEMENT ONLY.
  2. PREFORMED PLASTIC PAVEMENT MARKING LINE SHALL BE USED FOR ALL LANE LINES
  3. PREFORMED PLASTIC PAVEMENT MARKING LINE SHALL BE USED ON PCC PAVEMENT.



TYPICAL EXIT RAMP PAVEMENT MARKINGS



TYPICAL ENTRANCE RAMP PAVEMENT MARKINGS

REVISIONS	
NAME	DATE
DWS	1/90
DWS	5/91
AH	3/96
DWS	7/96

ILLINOIS DEPARTMENT OF TRANSPORTATION

**MULTI-LANE FREEWAY PAVEMENT MARKING DETAILS**

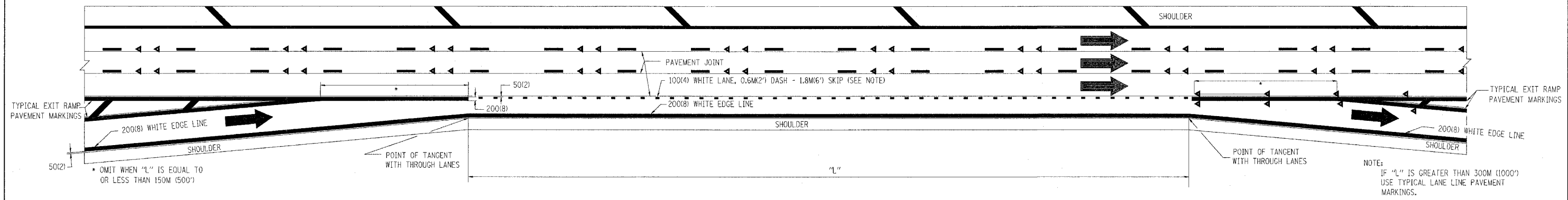
SCALE: NONE  
DATE: 4/19/2005

DRAWN BY C.A.D.D.  
CHECKED BY  
TC12 SHEET 1 OF 2  
REVISION DATE: 01/01/96

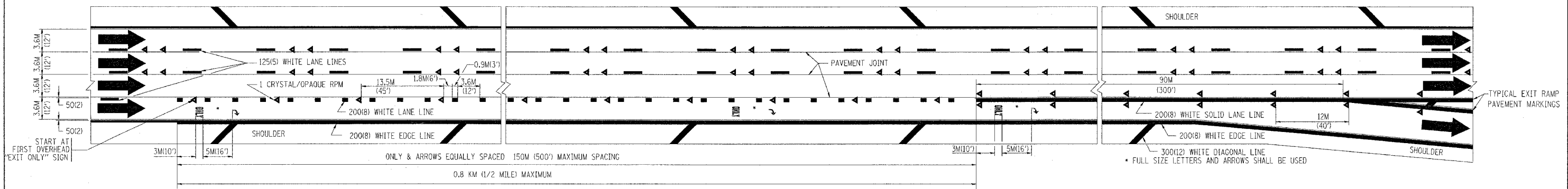
08:20:19 08/19/2005

P. A. NO.	SECTION	COUNTY	TOTAL SHEETS	SHEET NO.
VAF 2004-113 I	COOK	20A	20A	20A
STA.	TO STA.			
FED. ROAD DIST. NO. 1	ILLINOIS	FED. AID PROJECT		

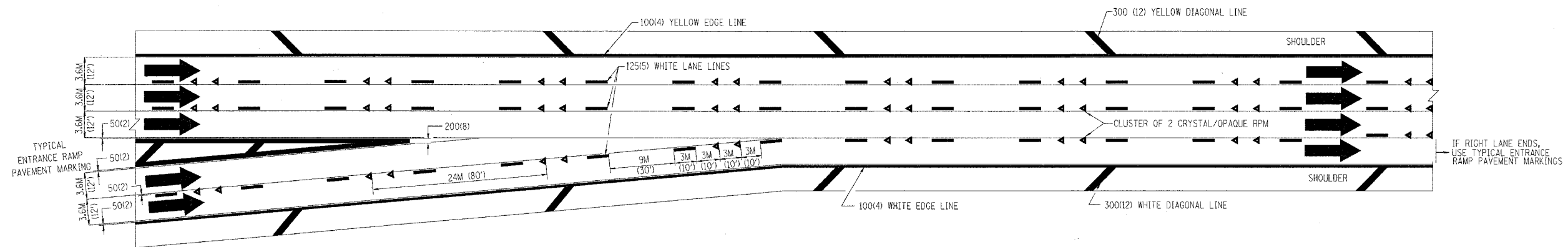
CONTRACT NO. 62869



TYPICAL ENTRANCE/EXIT RAMP COMBINATION PAVEMENT MARKINGS



TYPICAL EXIT ONLY LANE PAVEMENT MARKINGS



TYPICAL TWO LANE ENTRANCE RAMP PAVEMENT MARKINGS

REVISIONS	
NAME	DATE
DWS	1/90
DWS	5/91

ILLINOIS DEPARTMENT OF TRANSPORTATION

**MULTI-LANE FREEWAY  
PAVEMENT MARKING  
DETAILS**

SCALE: NONE  
DATE: 4/19/2005

DRAWN BY C.A.D.D.  
CHECKED BY

TC12 SHEET 2 OF 2  
REVISION DATE: 01/01/96