

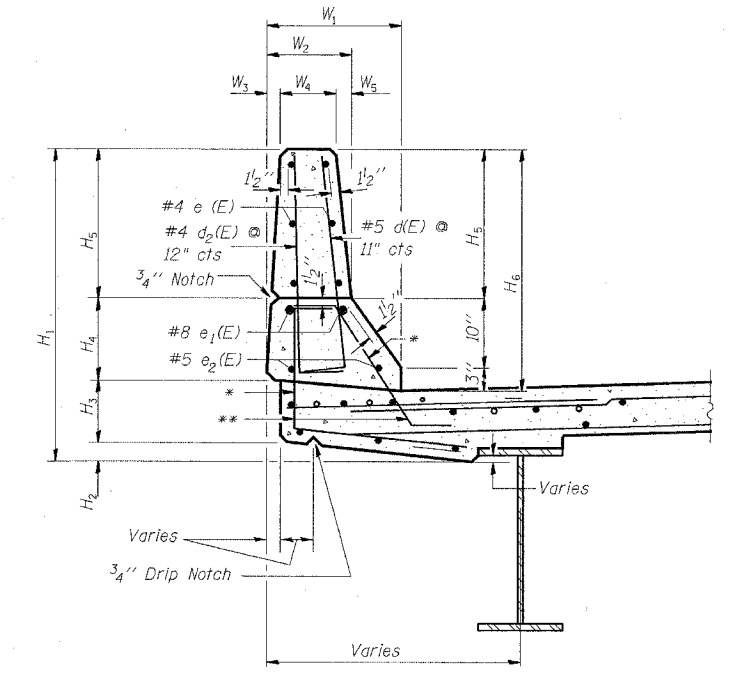
REF-  
REF-  
REF-

F.A. RTE.	SECTION	COUNTY	TOTAL SHEETS	SHEET NO.
Var.	2004-1131	COOK	20	7
STA.		TO STA.		
FED. ROAD DIST. NO. 1		ILLINOIS FED. AID PROJECT		

CONTRACT NO. 62869

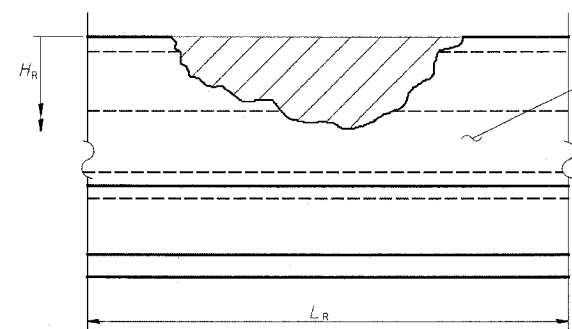
	016-1026	016-0026	016-1115			016-1067			016-1109				016-0120	016-2133
	Loc 1	Loc 2	Loc 3	Loc 4	Loc 5	Loc 6	Loc 7	Loc 8	Loc 9	Loc 10	Loc 11	Loc 12	Loc 13	Loc 14
L <sub>R</sub>	11'-0"	7'-0"	20'-0"	6'-0"	14'-0"	5'-0"	15'-0"	9'-0"	11'-0"	7'-0"	5'-0"	7'-0"	9'-0"	8'-0"
H <sub>R</sub>	1'-9"	3'-6 1/4"	3'-6"	3'-6"	3'-6"	3'-6"	3'-6"	3'-6"	3'-6"	3'-6"	3'-6"	3'-6"	3'-6"	3'-0"
W <sub>1</sub>	1'-7"	1'-7 3/4"	1'-7"	1'-7"	1'-7"	1'-7"	1'-7"	1'-7"	1'-7"	1'-7"	1'-7"	1'-7"	1'-7"	1'-8 3/4"
W <sub>2</sub>	1'-0"	1'-0 1/2"	1'-0"	1'-0"	1'-0"	1'-0"	1'-0"	1'-0"	1'-0"	1'-0"	1'-0"	1'-0"	1'-0"	1'-0"
W <sub>3</sub>	2 "	2 1/2"	2 1/2"	2 1/2"	2 1/2"	2 1/2"	2 1/2"	2 1/2"	2 1/2"	2 1/2"	2 1/2"	2 1/2"	2 1/2"	2"
W <sub>4</sub>	7 3/4"	7"	6 3/8"	6 3/8"	6 3/8"	6 3/8"	6 3/8"	6 3/8"	6 3/8"	6 3/8"	6 3/8"	6 3/8"	6 3/8"	10"
W <sub>5</sub>	2 1/4"	3"	3 1/8"	3 1/8"	3 1/8"	3 1/8"	3 1/8"	3 1/8"	3 1/8"	3 1/8"	3 1/8"	3 1/8"	3 1/8"	0"
H <sub>1</sub>	3'-9 1/2"	4'-4 1/2"	4'-6 1/2"	4'-6 1/2"	4'-6 1/2"	4'-6 1/2"	4'-6 1/2"	4'-6 1/2"	4'-6 1/2"	4'-6 1/2"	4'-6 1/2"	4'-6 1/2"	4'-6 1/2"	4'-0"
H <sub>2</sub>	4"	2 3/4"	5"	5"	5"	5"	5"	5"	5"	5"	5"	5"	5"	0"
H <sub>3</sub>	9 "	9"	9"	9"	9"	9"	9"	9"	9"	9"	9"	9"	9"	1'-0"
H <sub>4</sub>	11 1/2"	11 1/2"	11 1/2"	11 1/2"	11 1/2"	11 1/2"	11 1/2"	11 1/2"	11 1/2"	11 1/2"	11 1/2"	11 1/2"	11 1/2"	9"
H <sub>5</sub>	1'-9 "	2'-5 1/8"	2'-5"	2'-5"	2'-5"	2'-5"	2'-5"	2'-5"	2'-5"	2'-5"	2'-5"	2'-5"	2'-5"	2'-3"
H <sub>6</sub>	2'-10 "	3'-6 1/8"	3'-6"	3'-6"	3'-6"	3'-6"	3'-6"	3'-6"	3'-6"	3'-6"	3'-6"	3'-6"	3'-6"	3'-0"
#5 d(E)	—	8 - 3'-9"	22 - 3'-9"	—	16 - 3'-9"	6 - 3'-9"	17 - 3'-9"	—	12 - 3'-9"	—	—	—	—	—
#4 d <sub>2</sub> (E)	—	7 - 3'-9"	20 - 3'-9"	—	14 - 3'-9"	5 - 3'-9"	16 - 3'-9"	—	11 - 3'-9"	—	—	—	—	—
#4 e (E)	6 - 10'-9"	6 - 6'-9"	6 - 19'-9"	6 - 5'-9"	6 - 13'-9"	6 - 4'-9"	6 - 14'-9"	6 - 8'-9"	6 - 10'-9"	6 - 6'-9"	6 - 4'-9"	6 - 6'-9"	6 - 8'-9"	—
#8 e <sub>1</sub> (E)	—	2 - 6'-9"	2 - 19'-9"	2 - 5'-9"	2 - 13'-9"	2 - 4'-9"	2 - 14'-9"	2 - 8'-9"	2 - 10'-9"	2 - 6'-9"	2 - 4'-9"	2 - 6'-9"	2 - 8'-9"	—
#5 e <sub>2</sub> (E)	—	2 - 6'-9"	2 - 19'-9"	2 - 5'-9"	2 - 13'-9"	2 - 4'-9"	2 - 14'-9"	2 - 8'-9"	2 - 10'-9"	2 - 6'-9"	2 - 4'-9"	2 - 6'-9"	2 - 8'-9"	—
Reinforcement Bars Epoxy Coated (LBS)	43	144	380	66	268	95	290	100	208	78	55	78	100	0
Concrete Removal (CU YD)	0.6	0.8	2.2	0.8	1.0	0.4	1.5	1.2	1.2	0.9	0.4	0.9	1.2	1.0
Concrete (CU YD) Superstructure	0.6	0.9	2.6	0.8	1.8	0.6	2.0	1.2	1.5	0.9	0.6	0.9	1.2	1.0
Mechanical Splice (EACH)	12	10	20	10	20	10	20	20	10	10	10	20	10	0

(E) INDICATES EPOXY COATED



SECTION THRU PARAPET

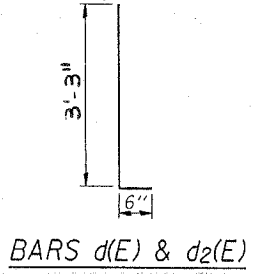
PARAPET DIMENSIONS AND BILL OF MATERIALS



FRONT FACE OF PARAPET

H<sub>r</sub> and L<sub>r</sub> indicate dimensions for concrete removal. Perimeters of concrete removal areas shall be saw cut 3/4" prior to removal of concrete.  
 NOTE: Concrete removal shall extend a minimum of 6" past damage or to joint if within 2'-0".  
 The cost of saw cuts shall be included in the cost of "Concrete Removal"

- Existing bars to be cleaned, straightened, and incorporated in new construction
- \*\* Note: If existing vertical rebar is missing, bars d(E) and d<sub>2</sub>(E) shall be straightened and epoxy grouted into existing concrete 9" deep. Cost shall be included in concrete superstructure



BARS d(E) & d<sub>2</sub>(E)

REVISIONS	
NAME	DATE

ILLINOIS DEPARTMENT OF TRANSPORTATION

PARAPET DIMENSIONS

SCALE: VERT. HORIZ.  
DATE 4/18/2005

DRAWN BY  
CHECKED BY