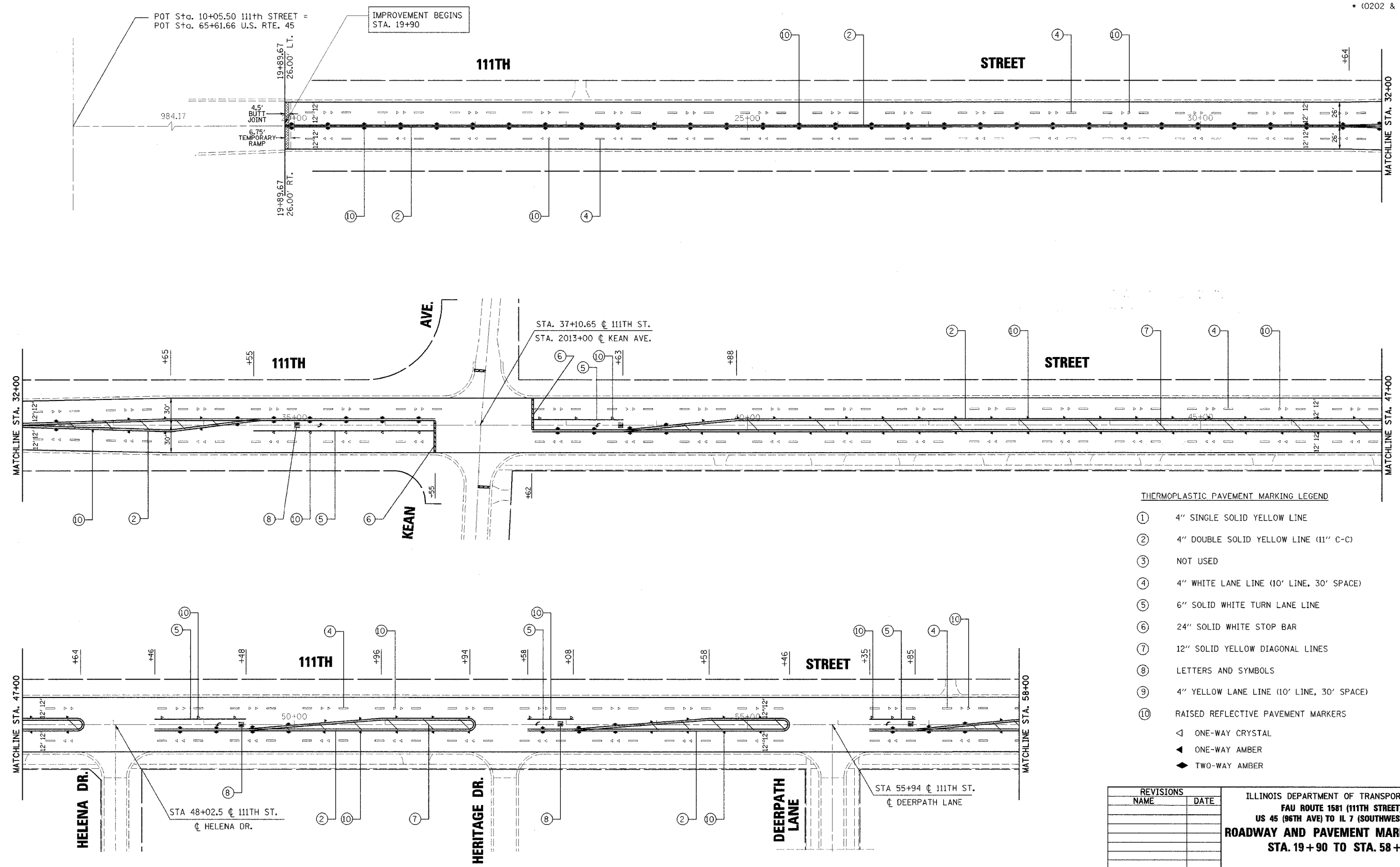


F.A.U. RTE.	SECTION	COUNTY	TOTAL SHEETS	SHEET NO.
1581	*		29	5
STA.		TO STA.		
FED. ROAD DIST. NO.		ILLINOIS FED. AID PROJECT		
* (0202 & 0208) RS-8 62748				



THERMOPLASTIC PAVEMENT MARKING LEGEND

- ① 4" SINGLE SOLID YELLOW LINE
 - ② 4" DOUBLE SOLID YELLOW LINE (11" C-C)
 - ③ NOT USED
 - ④ 4" WHITE LANE LINE (10' LINE, 30' SPACE)
 - ⑤ 6" SOLID WHITE TURN LANE LINE
 - ⑥ 24" SOLID WHITE STOP BAR
 - ⑦ 12" SOLID YELLOW DIAGONAL LINES
 - ⑧ LETTERS AND SYMBOLS
 - ⑨ 4" YELLOW LANE LINE (10' LINE, 30' SPACE)
 - ⑩ RAISED REFLECTIVE PAVEMENT MARKERS
- ◁ ONE-WAY CRYSTAL
 - ◄ ONE-WAY AMBER
 - ◆ TWO-WAY AMBER

REVISIONS	
NAME	DATE

ILLINOIS DEPARTMENT OF TRANSPORTATION
FAU ROUTE 1581 (111TH STREET)
US 45 (96TH AVE) TO IL 7 (SOUTHWEST HWY)
ROADWAY AND PAVEMENT MARKING PLAN
STA. 19+90 TO STA. 58+00

SCALE: VERT. _____
 HORIZ. _____
 DATE _____

DRAWN BY _____
 CHECKED BY _____

4/1/2005 10:49:41 AM K:\111R2516\Cadd\Drawn\111R2516\111R2516.dwg