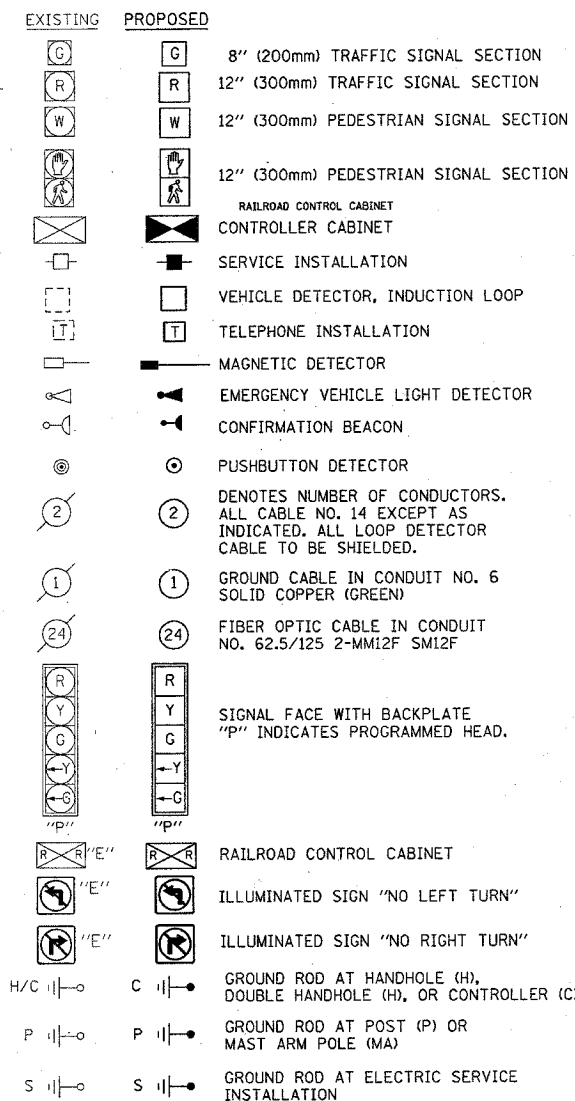


F.A.P. RTE.	SECTION	COUNTY	TOTAL SHEETS	SHEET NO.
330	2004-018TS	COOK	28	10
STA.		TO STA.		
FED. ROAD DIST. NO. 1 ILLINOIS FED. AID PROJECT				
CONTRACT NO. 62737				

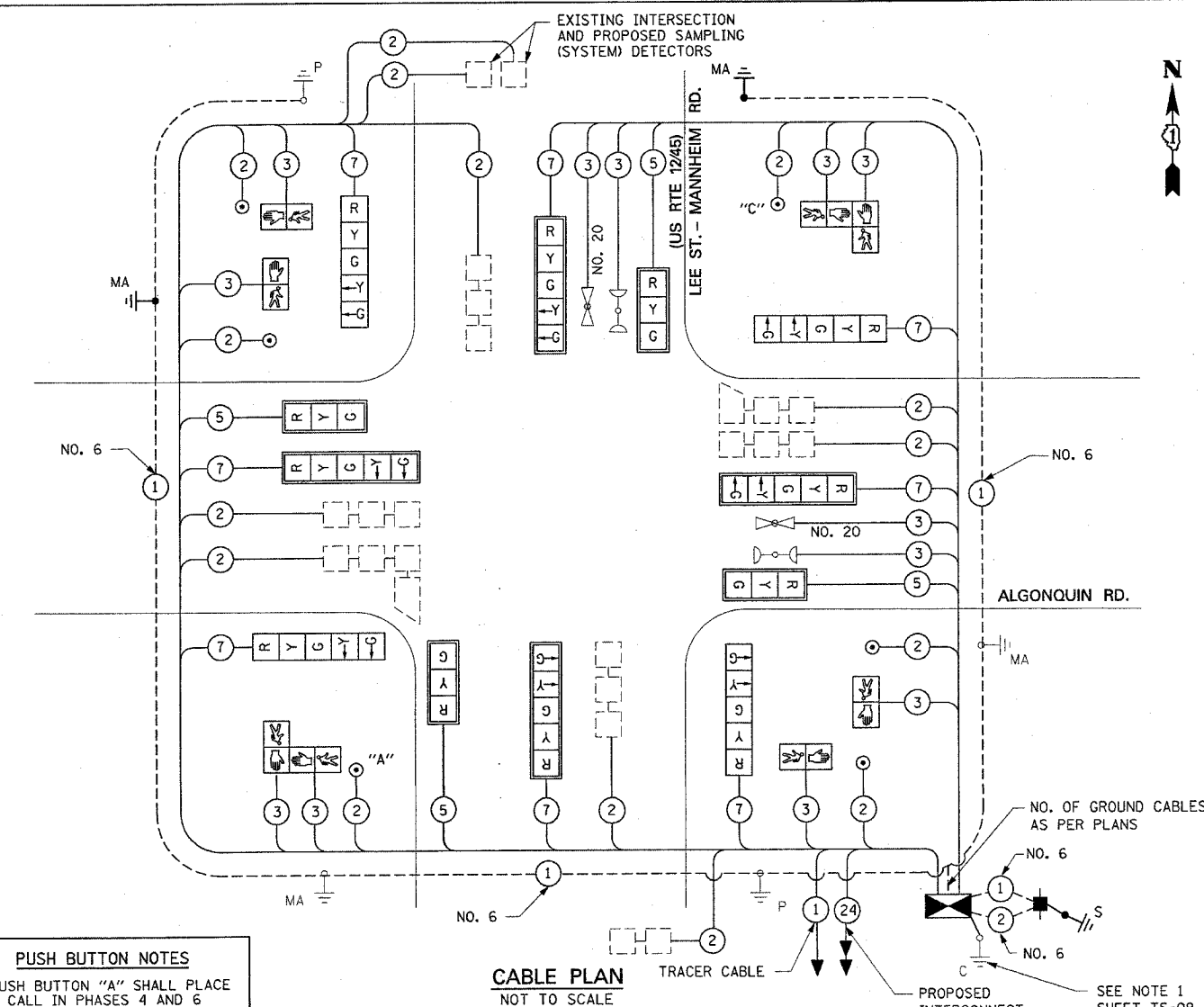
**CABLE PLAN LEGEND**



**SCHEDULE OF QUANTITIES**

PAY ITEM	UNITS	TOTAL
TRAFFIC CONTROL AND PROTECTION, STANDARD 701501	L SUM	0.2
TRAFFIC CONTROL AND PROTECTION, STANDARD 701606	L SUM	0.2
TRAFFIC CONTROL AND PROTECTION, STANDARD 701701	L SUM	0.2
TRAFFIC CONTROL AND PROTECTION, STANDARD 701801	L SUM	0.2
SIGN PANEL - TYPE 1	SQ FT	18
SIGN PANEL - TYPE 2	SQ FT	27.5
GROUNDING EXISTING HANDHOLE FRAME AND COVER	EACH	3
CONDUIT IN TRENCH, 2" DIA., GALVANIZED STEEL	FOOT	441
CONDUIT IN TRENCH, 2 1/2" DIA., GALVANIZED STEEL	FOOT	11
HEAVY-DUTY HANDHOLE	EACH	1
TRENCH AND BACKFILL FOR ELECTRICAL WORK	FOOT	452
MAINTENANCE OF EXISTING TRAFFIC SIGNAL INSTALLATION	EACH	1
FULL-ACTUATED CONTROLLER AND TYPE IV CABINET	EACH	1
TRANSCEIVER - FIBER OPTIC	EACH	1
ELECTRIC CABLE IN CONDUIT, SIGNAL NO. 14 2C	FOOT	760
ELECTRIC CABLE IN CONDUIT, SIGNAL NO. 14 3C	FOOT	1340
ELECTRIC CABLE IN CONDUIT, SIGNAL NO. 14 5C	FOOT	645
ELECTRIC CABLE IN CONDUIT, SIGNAL NO. 14 7C	FOOT	1245
ELECTRIC CABLE IN CONDUIT, LEAD-IN, NO. 14 1 PAIR	FOOT	2115
ELECTRIC CABLE IN CONDUIT, SERVICE, NO. 6 2 C	FOOT	120
TRAFFIC SIGNAL POST, GALVANIZED STEEL 16 FT.	EACH	2
STEEL MAST ARM ASSEMBLY AND POLE, 28 FT.	EACH	2
STEEL MAST ARM ASSEMBLY AND POLE, 30 FT.	EACH	2
CONCRETE FOUNDATION, TYPE E 30-INCH DIAMETER	FOOT	30
DRILL EXISTING HANDHOLE	EACH	6
TRAFFIC SIGNAL BACKPLATE, LOUVERED, ALUMINUM	EACH	8
INDUCTIVE LOOP DETECTOR	EACH	9
PEDESTRIAN PUSH-BUTTON	EACH	6
TEMPORARY TRAFFIC SIGNAL INSTALLATION	EACH	1
REMOVE ELECTRIC CABLE FROM CONDUIT	FOOT	6885
REMOVE EXISTING TRAFFIC SIGNAL EQUIPMENT	EACH	1
REMOVE EXISTING HANDHOLE	EACH	1
REMOVE EXISTING CONCRETE FOUNDATION	EACH	3
SERVICE INSTALLATION, POLE MOUNTED	EACH	1
ELECTRIC CABLE IN CONDUIT, GROUNDING, NO. 6 1C	FOOT	415
ELECTRIC CABLE IN CONDUIT, SIGNAL NO. 20 3C TWISTED, SHIELDED	FOOT	245
SIGNAL HEAD, L.E.D., 1-FACE, 3-SECTION, MAST ARM MOUNTED	EACH	4
SIGNAL HEAD, L.E.D., 1-FACE, 5-SECTION, BRACKET MOUNTED	EACH	4
SIGNAL HEAD, L.E.D., 1-FACE, 5-SECTION, MAST ARM MOUNTED	EACH	4
PEDESTRIAN SIGNAL HEAD, L.E.D., 1-FACE, BRACKET MOUNTED	EACH	4
PEDESTRIAN SIGNAL HEAD, L.E.D., 2-FACE, BRACKET MOUNTED	EACH	2

\*\* Y031-3D - 100% COST TO THE VILLAGE OF DESPLAINES

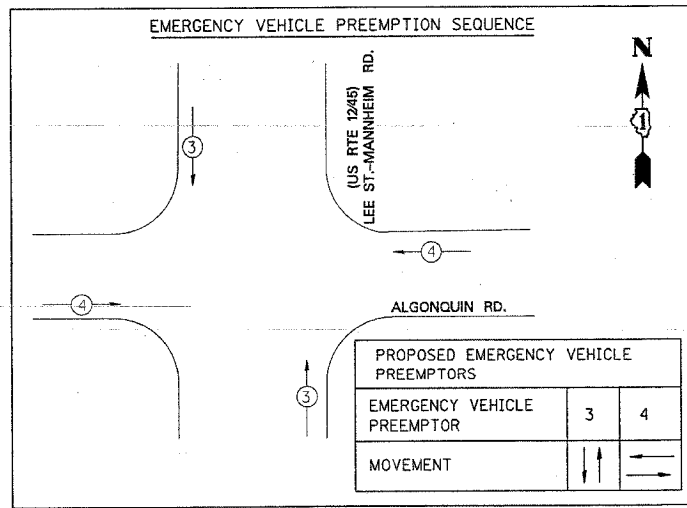
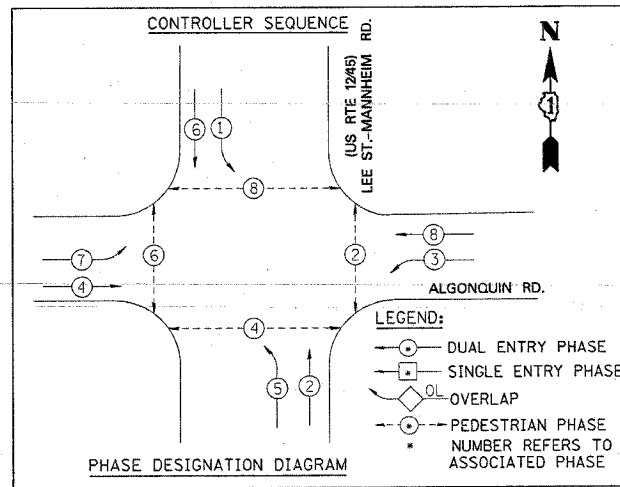


**PUSH BUTTON NOTES**  
 PUSH BUTTON "A" SHALL PLACE A CALL IN PHASES 4 AND 6  
 PUSH BUTTON "C" SHALL PLACE A CALL IN PHASES 8 AND 2

**CABLE PLAN**  
NOT TO SCALE

THE END OF THE TRACER CABLE SHALL BE CONTINUOUS AND EXTEND INTO THE CONTROLLER CABINET

SEE NOTE 1 SHEET TS-09



I.D.O.T. TRAFFIC SIGNAL INSTALLATION ELECTRICAL SERVICE REQUIREMENTS					TOTAL WATTAGE
TYPE	NO. LAMPS	WATTAGE INCAND	WATTAGE LED	% OPERATION	
SIGNAL (RED)	12	135	17	0.50	102.00
(YELLOW)	12	135	25	0.25	75.00
(GREEN)	12	135	15	0.25	45.00
ARROW	16	135	12	0.10	19.20
PED. SIGNAL	8	90	25	1.00	200.00
CONTROLLER	1	100	100	1.00	100.00
ILLUM. SIGN		84	35	0.05	
FLASHER		135	25	0.50	
TOTAL =					541.20

ENERGY COST TO: Illinois Department of Transportation  
 Division of Highways / District 1  
 201 W Center Court / Schaumburg, Illinois 60196-1096

ENERGY SUPPLY: CONTACT: MS. JUDY SCHOMER  
 PHONE: (847)-870-2063  
 COMPANY: ComEd

FOUNDATION (DEPTH)	(FT.) (m)	CABLE SLACK (FT.) (m)	CABLE SLACK (FT.) (m)
TYPE A - POST	4 (1.2)	HANDHOLE 6.5 (2.0)	ALL FOUNDATIONS 3.5 (1.0)
D - CONTROLLER	4 (1.2)	DOUBLE HANDHOLE 13 (4.0)	MAST ARM (L) POLE 20'-H-L-2= (6m-H-L-0.6m)=
E - M. ARM POLE		SIGNAL POST 2 (1.0)	BRACKET MOUNTED 13 (4.0)
24" (600mm)	10 (3.0)	CONTROLLER CAB. 1 (0.5)	PED. PUSHBUTTON 4 (1.2)
30" (750mm)	15 (4.6)	FIBER OPTIC 13 (4.0)	ELECTRIC SERVICE 13.5 (4.1)
		ELECTRIC SERVICE 1 (0.5)	SERVICE TO GROUND 13.5 (4.1)
		GROUND CABLE 1 (0.5)	POST MOUNTED 6 (1.8)

**K&E** KAM ENGINEERING, INC.  
 CONSULTING ENGINEERS  
 707A Davis Road, Suite 205  
 Elgin, Illinois 60123-1369

REVISIONS		ILLINOIS DEPARTMENT OF TRANSPORTATION	
NAME	DATE		
		CABLE PLAN, PHASE DESIGNATION DIAGRAM, AND SCHEDULE OF QUANTITIES US 12/45 (LEE-MANNHEIM RD.) AND ALGONQUIN RD.	
		SCALE: NONE	
		DATE: FEBRUARY, 2005	
		DRAWN BY: RV/MD	
		DESIGNED BY: DS	
		CHECKED BY: AS/KG	

c:\projects\traffic\050001\consult\algonquin cbl.sht 3/22/2005