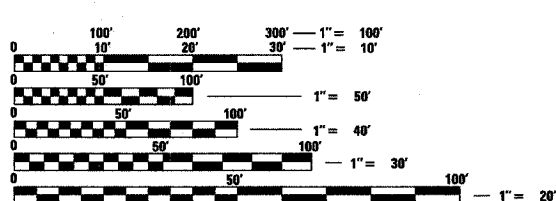


INDEX OF SHEETS

1. TITLE SHEET
2. SUMMARY OF TRAFFIC SIGNAL QUANTITIES
- 3-6. STANDARD TRAFFIC SIGNAL DESIGN DETAILS
7. TEMPORARY TRAFFIC SIGNAL INSTALLATION, US RTE. 12/45 (LEE-MANNHEIM RD.) AND ALGONQUIN RD.
8. TEMPORARY CABLE PLAN, PHASE DESIGNATION DIAGRAM, U.S. RTE. 12/45 (LEE-MANNHEIM RD.) AND ALGONQUIN RD.
9. TRAFFIC SIGNAL MODIFICATION PLAN, U.S. RTE. 12/45 (LEE-MANNHEIM RD.) AND ALGONQUIN RD.
10. CABLE PLAN, PHASE DESIGNATION DIAGRAM, AND SCHEDULE OF QUANTITIES, U.S. RTE. 12/45 (LEE-MANNHEIM RD.) AND ALGONQUIN RD.
11. TRAFFIC SIGNAL MODIFICATION PLAN, U.S. RTE.12/45 (LEE-MANNHEIM RD.) AND OAKTON ST.
12. CABLE PLAN, PHASE DESIGNATION DIAGRAM, AND SCHEDULE OF QUANTITIES, U.S. RTE. 12/45 (LEE-MANNHEIM RD.) AND OAKTON ST.
13. TEMPORARY TRAFFIC SIGNAL INSTALLATION PLAN, U.S. RTE. 12/45 (MANNHEIM RD) AND LEE ST.
14. TEMPORARY CABLE PLAN, U.S. RTE. 12/45 (MANNHEIM RD.) AND LEE ST.
15. TRAFFIC SIGNAL INSTALLATION PLAN, U.S. RTE. 12/45 (MANNHEIM RD.) AND LEE ST.
16. CABLE PLAN, PHASE DESIGNATION DIAGRAM AND SCHEDULE OF QUANTITIES, U.S. RTE. 12/45 (MANNHEIM RD.) AND LEE ST.
17. TEMPORARY TRAFFIC SIGNAL PLAN, U.S. RTE. 12/45 (MANNHEIM RD.) AND PROSPECT AVE.
18. TEMPORARY CABLE PLAN, U.S. RTE. 12/45 (MANNHEIM RD.) AND PROSPECT AVE.
19. TEMPORARY SEQUENCE OF OPERATION AND RAILROAD PREEMPTION SEQUENCE OF OPERATION, U.S. RTE. 12/45 (MANNHEIM RD.) AND PROSPECT AVE.
20. TRAFFIC SIGNAL INSTALLATION PLAN - U.S. RTE. 12/45 (MANNHEIM RD.) AND PROSPECT AVE.
21. CABLE PLAN AND SCHEDULE OF QUANTITIES, U.S. RTE. 12/45 (MANNHEIM RD.) AND PROSPECT AVE.
22. SEQUENCE OF OPERATION, EMERGENCY VEHICLE PREEMPTION SEQUENCE OF OPERATION, AND RAILROAD PREEMPTION SEQUENCE OF OPERATION, US RTE. 12/45 (MANNHEIM RD.) AND PROSPECT AVE.
- 23-25. INTERCONNECT PLANS 1 TO 3, U.S. RTE. 12/45 (LEE-MANNHEIM RD) FROM PROSPECT AVE. TO ALGONQUIN RD.
26. INTERCONNECT SCHEMATIC PLAN - U.S. RTE. 12/45 (LEE-MANNHEIM RD) FROM PROSPECT AVE. TO ALGONQUIN RD.
- 27-28. MAST ARM MOUNTED STREET NAME SIGNS.

STANDARDS

701 006-02	702001-05	880006	701 801-03
701 011-01	424001-03	701501-03	780001-01
701101-01	814001	701606-04	880001
701301-02	857001	701701-04	



FULL SIZE PLANS HAVE BEEN PREPARED USING STANDARD ENGINEERING SCALES. REDUCED SIZED PLANS WILL NOT CONFORM TO STANDARD SCALES. IN MAKING MEASUREMENTS ON REDUCED PLANS, THE ABOVE SCALES MAY BE USED.

J.U.L.I.E.
JOINT UTILITY LOCATION INFORMATION FOR EXCAVATION
1-800-892-0123

CONTRACT NO. 62737

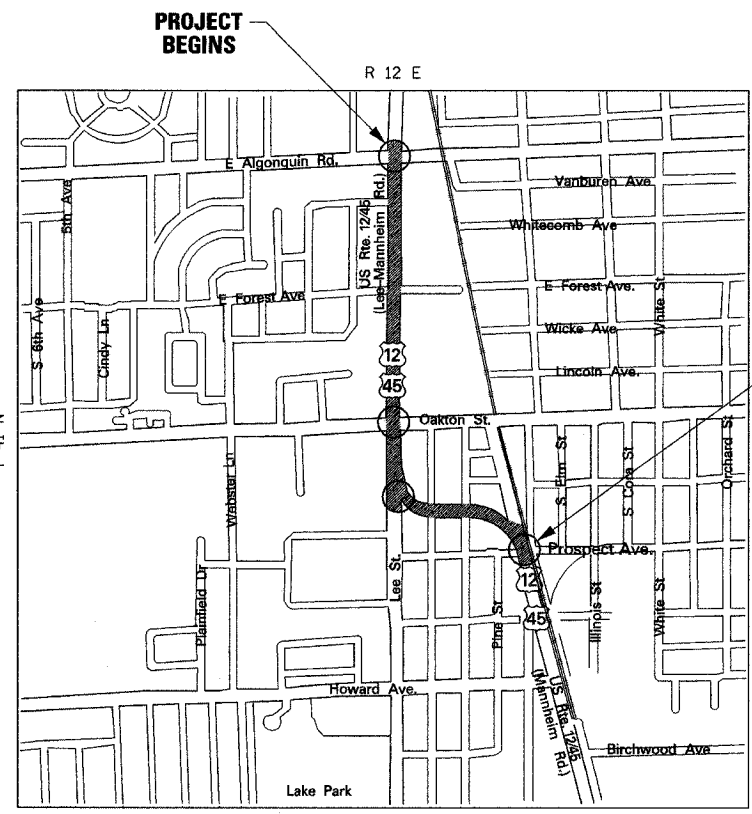


STATE OF ILLINOIS
DEPARTMENT OF TRANSPORTATION
DIVISION OF HIGHWAYS

**PROPOSED
HIGHWAY PLANS**

DISTRICT 1
**CONGESTION MITIGATION AIR QUALITY
FIBER OPTIC COMMUNICATIONS NETWORK
FAP ROUTE 330 US ROUTE 12/45 (LEE-MANNHEIM RD.)
FROM ALGONQUIN RD. TO PROSPECT AVE.**

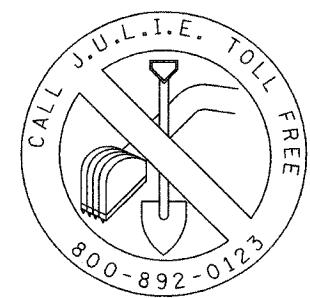
SECTION 2004-018 TS
COOK COUNTY
C-91-171-04
PROJ. CMF-0330(045)



PROJECT ENDS



SIGNED *Mr. Altman*
DATE 02-17-05
EXPIRES ON 11-30-05



48 - HOURS BEFORE DIGGING



LOCATION OF SECTION INDICATED THUS: -

STATE OF ILLINOIS
DEPARTMENT OF TRANSPORTATION
DIVISION OF HIGHWAYS

SUBMITTED March 22 20 05
Diane M. O'Keefe
DEPUTY DIRECTOR OF HIGHWAYS, REGION ENGINEER

May 13 20 05
Mike Nere
ENGINEER OF DESIGN AND ENVIRONMENT

May 13 20 05
Victor Moders
DIRECTOR OF HIGHWAYS, CHIEF ENGINEER

PRINTED BY THE AUTHORITY
OF THE STATE OF ILLINOIS

Rev.

BUREAU OF TRAFFIC: TERRY RAMMACHER / DARYLE DREW (847) 705-4420

\\SP1\Monitors\1111e Sheet.shx 02/17/2005 01:52:40 PM