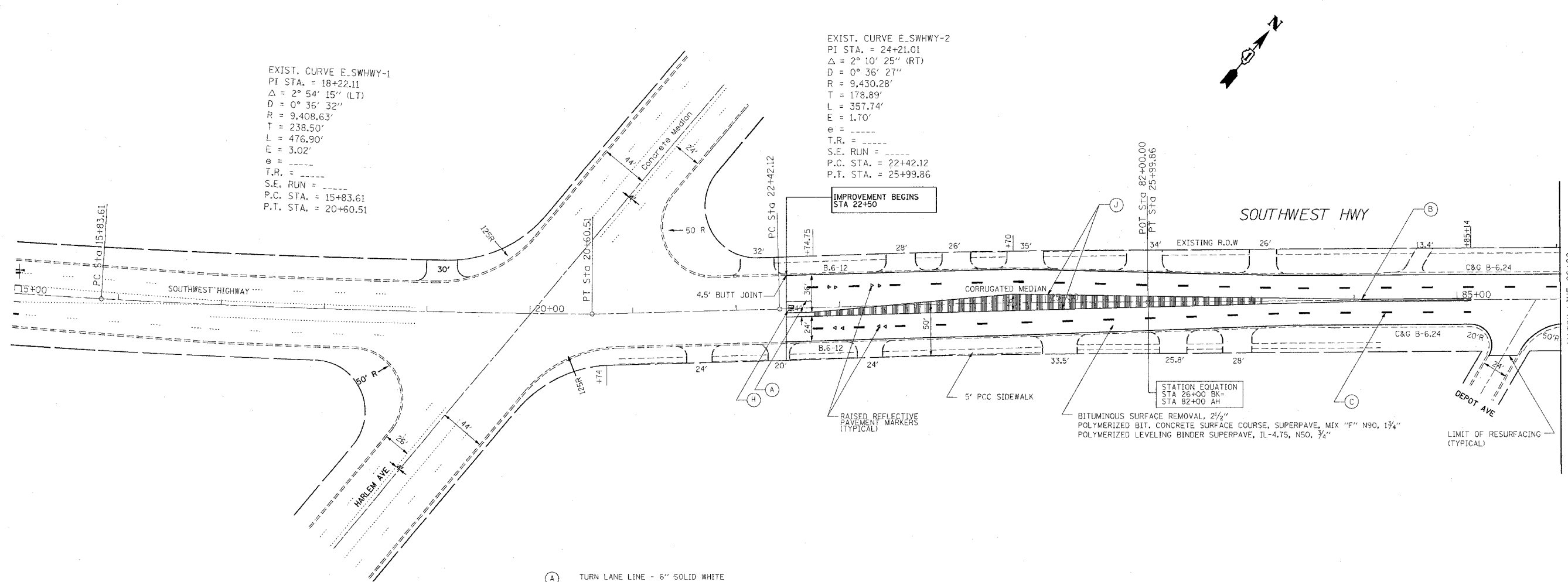


F.A.U. RTE.	SECTION	COUNTY	TOTAL SHEETS	SHEET NO.
3578	1314 RS-3	COOK	23	8
STA. _____		TO STA. _____		
FED. ROAD DIST. NO. 1		ILLINOIS	FED. AID PROJECT	

CONTRACT 62673

EXIST. CURVE E.SWHWY-1
 PI STA. = 18+22.11
 $\Delta = 2^\circ 54' 15''$ (LT)
 $D = 0^\circ 36' 32''$
 $R = 9,408.63'$
 $T = 238.50'$
 $L = 476.90'$
 $E = 3.02'$
 $e = \text{---}$
 $T.R. = \text{---}$
 $S.E. RUN = \text{---}$
 $P.C. STA. = 15+83.61$
 $P.T. STA. = 20+60.51$

EXIST. CURVE E.SWHWY-2
 PI STA. = 24+21.01
 $\Delta = 2^\circ 10' 25''$ (RT)
 $D = 0^\circ 36' 27''$
 $R = 9,430.28'$
 $T = 178.89'$
 $L = 357.74'$
 $E = 1.70'$
 $e = \text{---}$
 $T.R. = \text{---}$
 $S.E. RUN = \text{---}$
 $P.C. STA. = 22+42.12$
 $P.T. STA. = 25+99.86$



IMPROVEMENT BEGINS STA 22+50

STATION EQUATION
 STA 26+00 BK =
 STA 82+00 AH

BITUMINOUS SURFACE REMOVAL, 2 1/2"
 POLYMERIZED BIT. CONCRETE SURFACE COURSE, SUPERPAVE, MIX "F" N90, 1 3/4"
 POLYMERIZED LEVELING BINDER SUPERPAVE, IL-4.75, N50, 3/4"

- (A) TURN LANE LINE - 6" SOLID WHITE
- (B) CENTERLINE - 4" SOLID YELLOW (2 @ 11" C-C)
- (C) SKIP-DASH LANE LINE - 4" WHITE (10' DASH & 30' SKIP)
- (D) FIRE LANE - 6" SOLID WHITE (RT. 45 DIAGONALS, 4' C-C)
- (E) STOP & TRANSVERSE LINES 24" SOLID WHITE
- (F) CROSSWALK LINE - 6" SOLID WHITE (2 @ 6' C-C)
- (G) DOTTED LANE LINE - 6" WHITE (2' LINE, 6' SPACE)
- (H) LETTERS & SYMBOLS, 8' WHITE (LEFT & RIGHT TURN ONLY)
- (I) 12" SOLID YELLOW (RT. 45 DIAGONALS)
- (J) MEDIAN EDGE LINE - 4" SOLID YELLOW

NOTE: PAVEMENT MARKINGS (TYPICAL FOR ALL SHEETS)

REVISIONS	
NAME	DATE

ILLINOIS DEPARTMENT OF TRANSPORTATION
 SOUTHWEST HWY
 PROPOSED ROADWAY & PAVEMENT MARKING PLANS
 VERT. 1" = 50'
 SCALE: HORIZ.
 DATE 3/30/2005
 DRAWN BY
 CHECKED BY