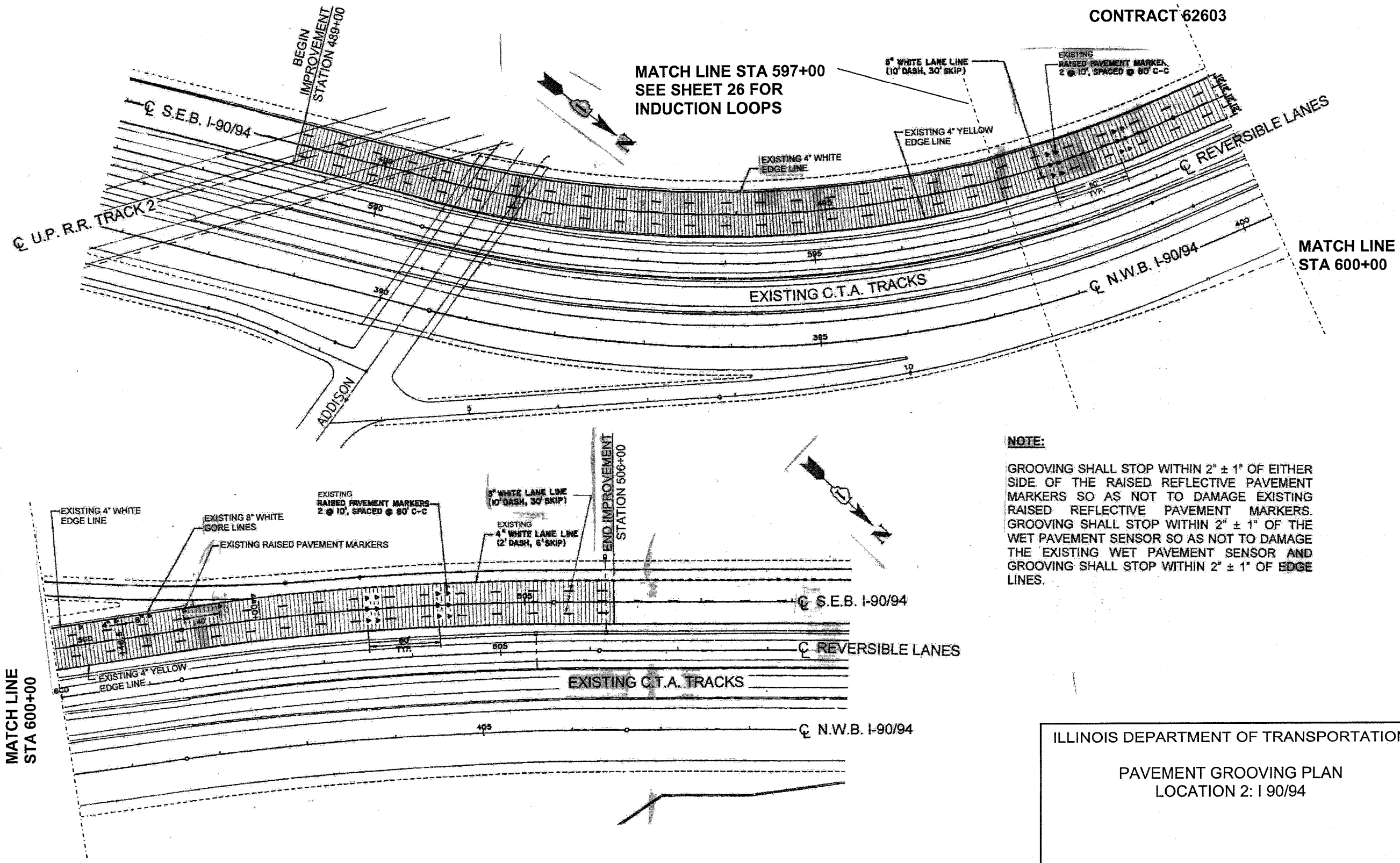


FAP 330	SECTION	COUNTY	TOTAL SHEETS	SHEET NO.
FAI 90/94	2004-1241	COOK	36	26

CONTRACT 62603



**NOTE:**  
 GROOVING SHALL STOP WITHIN 2" ± 1" OF EITHER SIDE OF THE RAISED REFLECTIVE PAVEMENT MARKERS SO AS NOT TO DAMAGE EXISTING RAISED REFLECTIVE PAVEMENT MARKERS. GROOVING SHALL STOP WITHIN 2" ± 1" OF THE WET PAVEMENT SENSOR SO AS NOT TO DAMAGE THE EXISTING WET PAVEMENT SENSOR AND GROOVING SHALL STOP WITHIN 2" ± 1" OF EDGE LINES.

ILLINOIS DEPARTMENT OF TRANSPORTATION  
 PAVEMENT GROOVING PLAN  
 LOCATION 2: I 90/94