

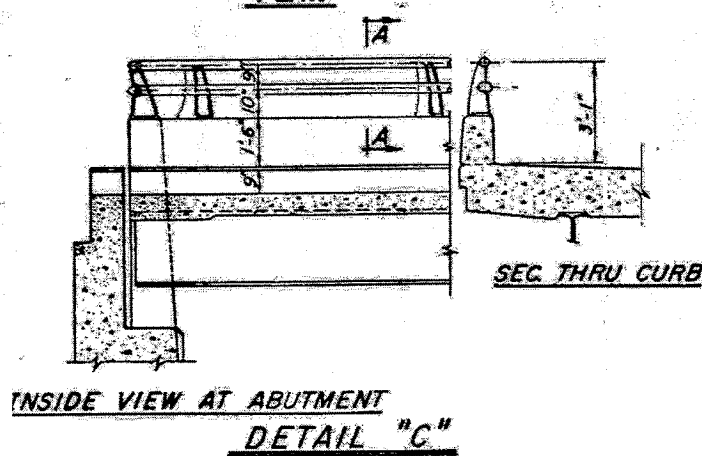
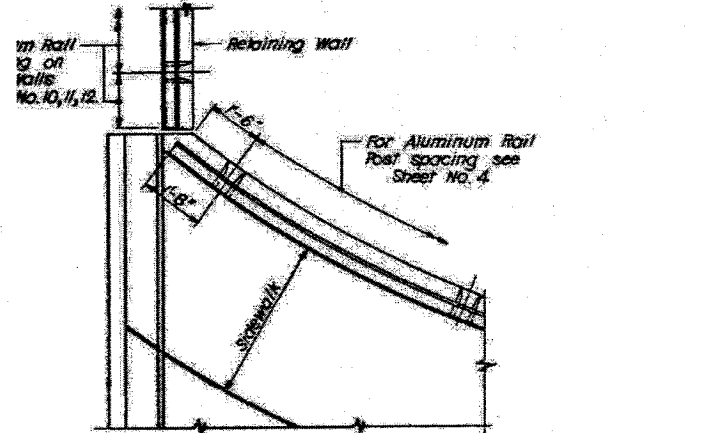
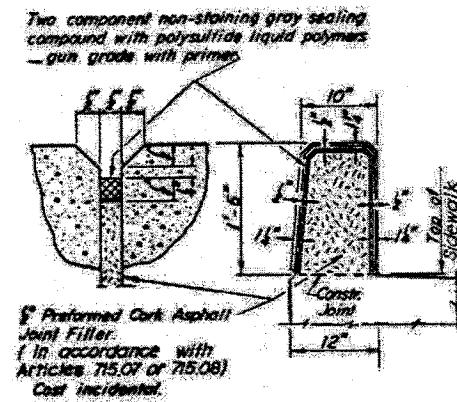
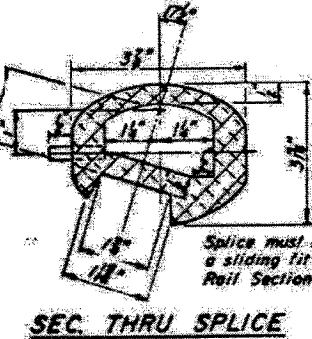
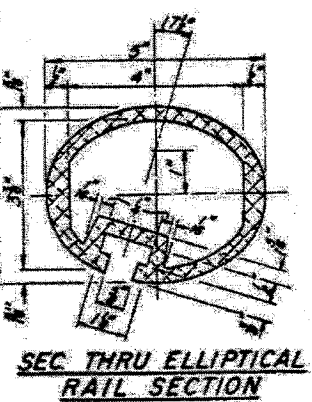
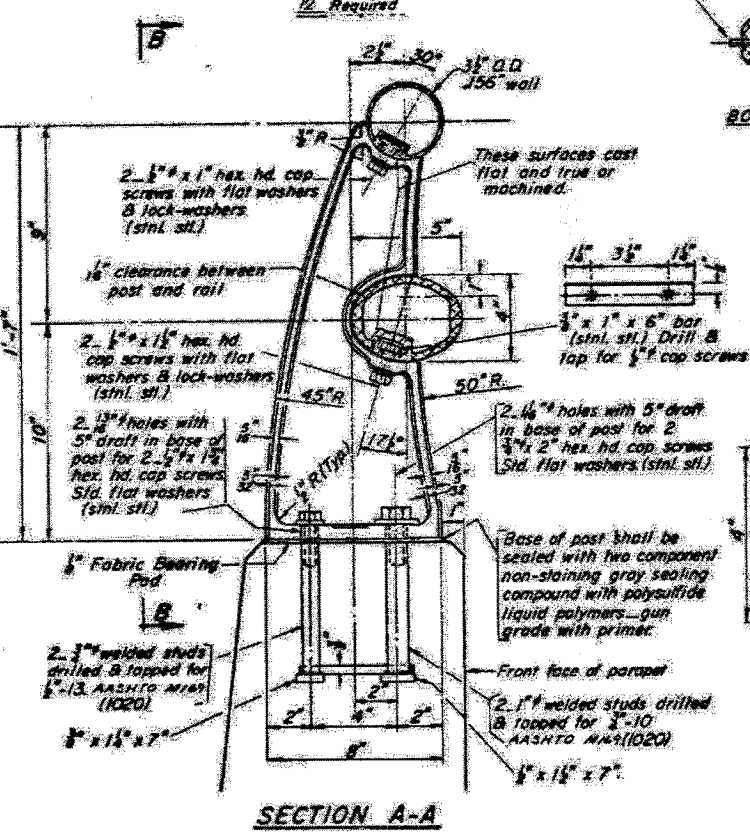
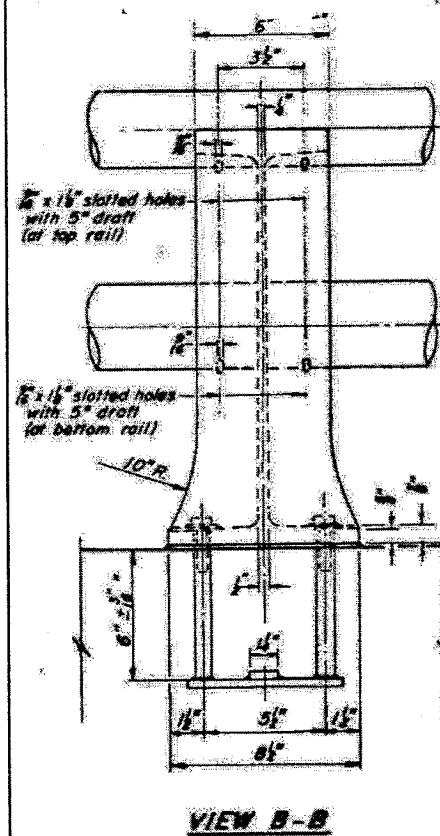
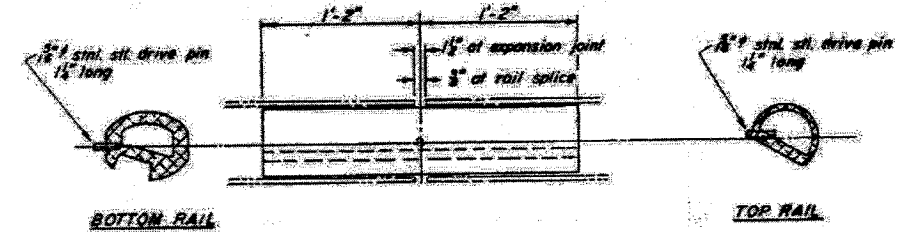
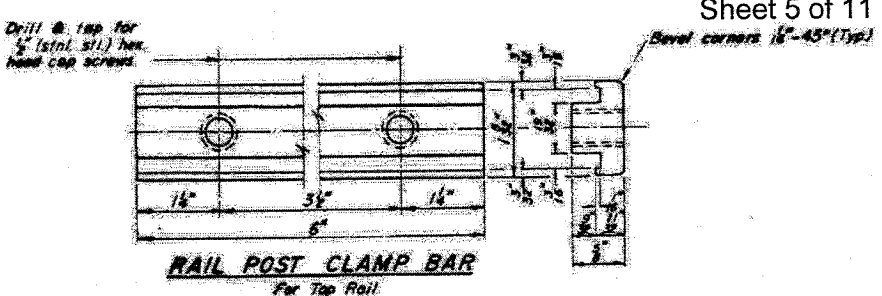
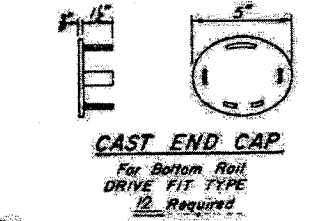
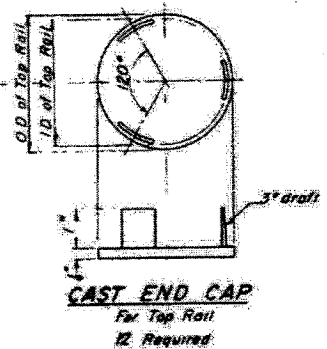
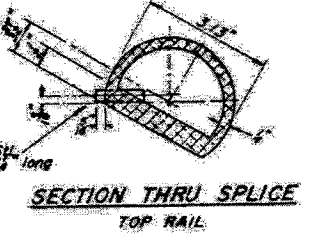
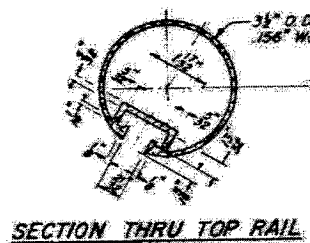
FAP 330	SECTION	COUNTY	TOTAL SHEETS	SHEET NO.
FAI 90/94	2004-1241	COOK	36	13

Sheet 5 of 11

CONTRACT 62603

NOTES:

All Posts shall be normal to parapet.
 All Aluminum Alloy Extruded Rail shall be supplied in modular lengths of 30 feet, except at the end of bridge or over open joints in bridge deck where the rail shall be attached to a minimum of 2 posts. If the rail is on a horizontal curve of 2300 foot radius or less, the modular lengths may be reduced but shall be attached to a minimum of 2 posts.
 All joints in rail shall be spliced per detail.
 Provide 1-1/2" and 2-1/8" Aluminum Shims for 25% of the Posts.
 Rail elements shall be parallel to Grade - high spots shall be ground and low spots shimmed.
 Railing shall be in accordance with Section 508 of the Standard Specifications, except as noted, and shall be paid for at the contract unit price per linear foot for ALUMINUM RAILING, TYPE L.
 Aluminum alloy rail shall conform to ASTM B 221 alloy 6061-T6 or 6351-T3 with min. yield 35 ksi, tensile 36 ksi, and elongation of 10% in 2 inches.



Item	Unit	Quantity
ALUMINUM RAILING, TYPE L	Lin. Ft.	1,909

FOR INFORMATION ONLY

ILLINOIS DEPARTMENT OF TRANSPORTATION
 ALUMINUM RAILING
 LOC 1: US 12/ 45 OVER IL 64
 SN 016-0336