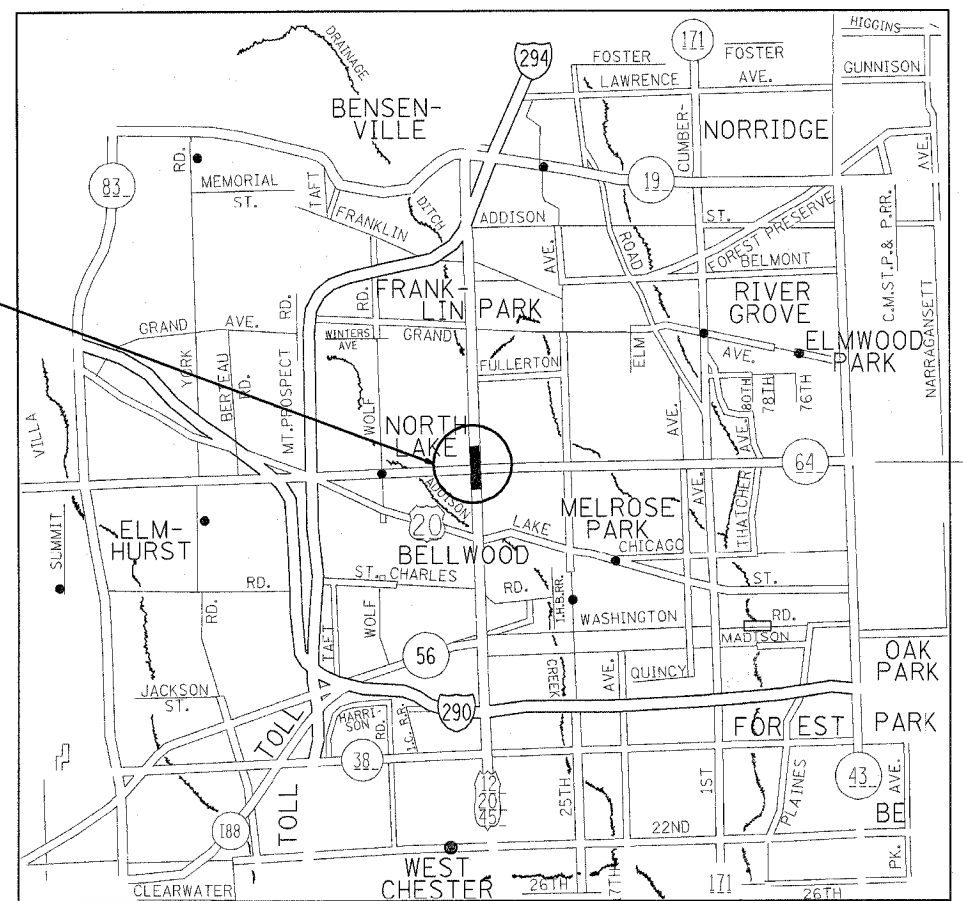


**CONTRACT NO. 62603**

**LOCATION 1**

**IMPROVEMENT LOCATED IN THE VILLAGES OF MELROSE PARK, STONE PARK, NORTH LAKE, BELLWOOD AND FRANKLIN PARK**

R 12 E



**IMPROVEMENT LOCATION  
US 1245 OVER IL 64**

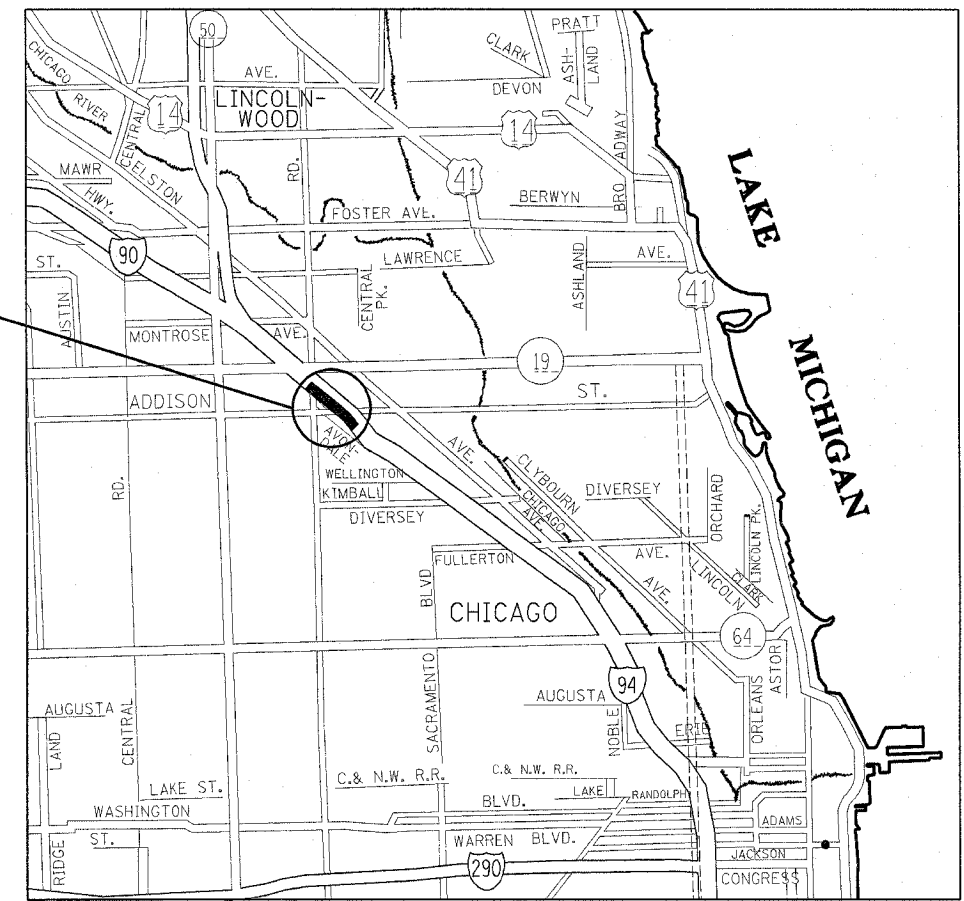
**TRAFFIC DATA**  
 IL 64  
 2001 ADT = 57,100  
 SPEED LIMIT = 40 MPH  
 US 1245  
 2001 ADT = 45,900  
 SPEED LIMIT = 35 MPH

**PROVISO TOWNSHIP**

**LOCATION 2**

**IMPROVEMENT LOCATED IN THE CITY OF CHICAGO**

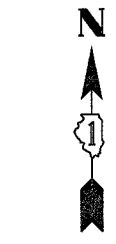
R 13 E



**IMPROVEMENT LOCATION  
AT ADDISON STREET CURVE  
FAI 9094 EASTBOUND**

**TRAFFIC DATA**  
 I 9094 KENNEDY EXPWY  
 2001 ADT = 282,300  
 SPEED LIMIT = 55 MPH

**JEFFERSON TOWNSHIP**



T 40 N

T 39 N



T 40 N

REVISIONS	
NAME	DATE

ILLINOIS DEPARTMENT OF TRANSPORTATION

**LOCATION MAP**

SCALE: VERT.  
 HORIZ.  
 DATE 4/16/2005

DRAWN BY  
 CHECKED BY