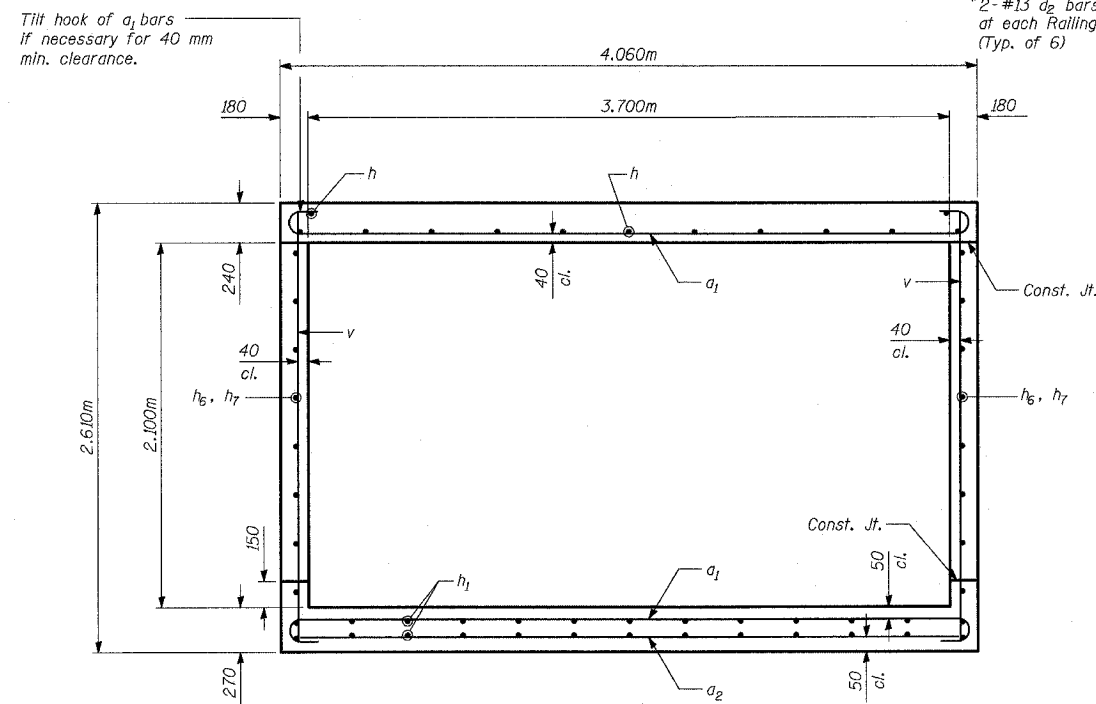
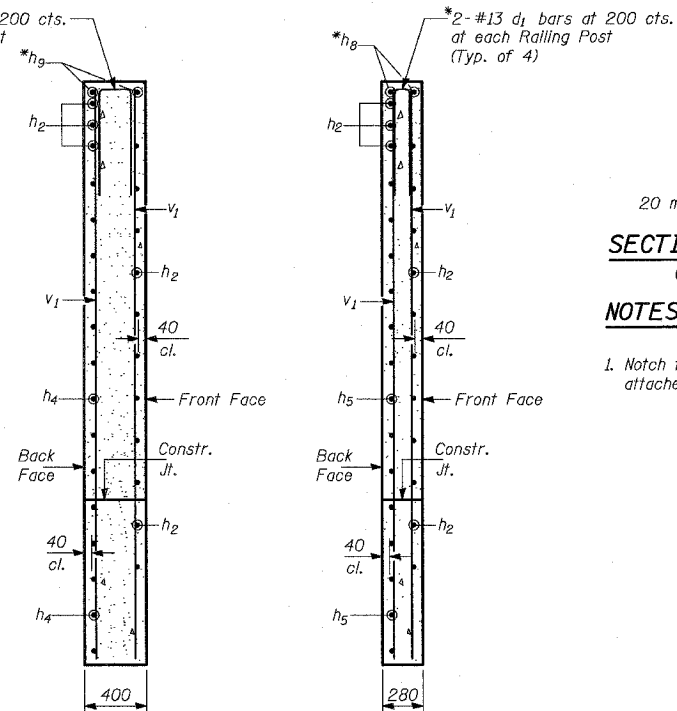


STATE OF ILLINOIS  
DEPARTMENT OF TRANSPORTATION

FAP	SECTION	COUNTY	SHEET	SHEET
337	28R-5	LAKE	562	431
SHEET NO. 5				
9 SHEETS				
FED. ROAD DIST. NO. 7		ILLINOIS FED. AID PROJECT		
0-91-552-99		Contract No. 60881		



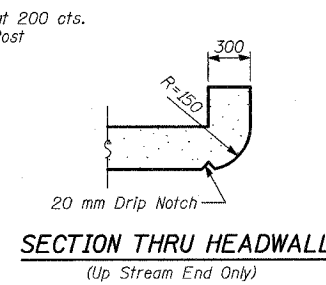
SECTION THRU BARREL



SECTION B-B

SECTION C-C

\* North end Wing Walls only.



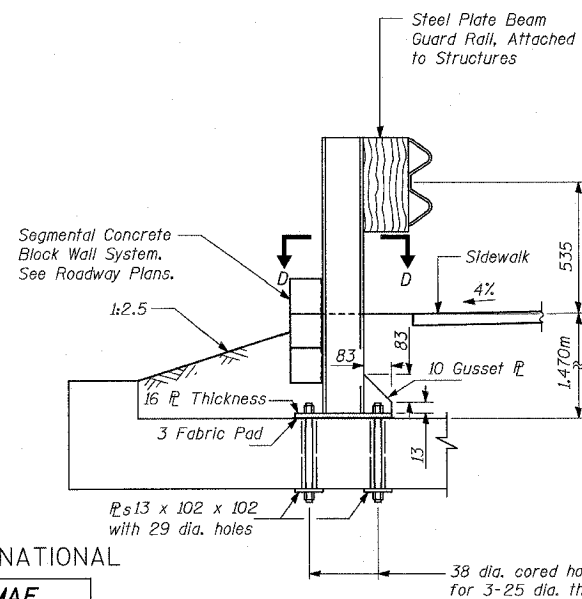
SECTION THRU HEADWALL  
(Up Stream End Only)

NOTES

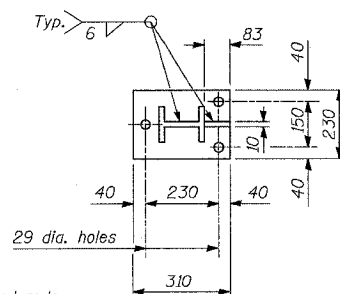
1. Notch formed by rough finished board attached to and removed with formwork.

LEGEND

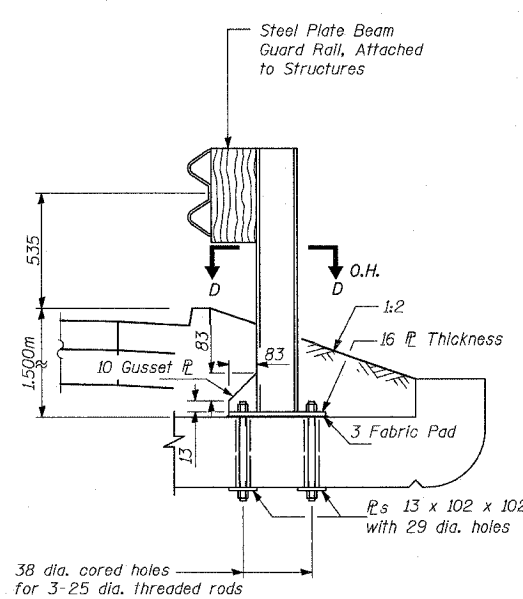
O.H. denotes opposite hand.



CROSS SECTION AT NORTH END

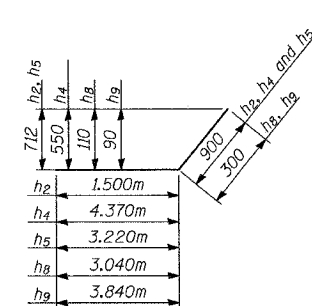


SECTION D-D

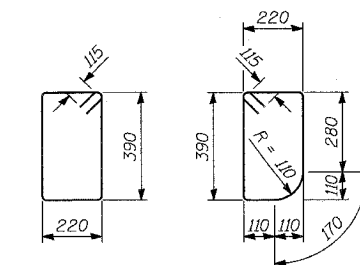


CROSS SECTION AT SOUTH END

STEEL PLATE BEAM GUARD RAIL ATTACHED TO STRUCTURES

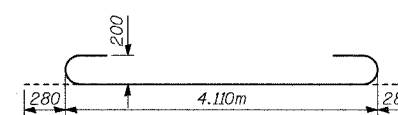


BARS  $h_2, h_4, h_5, h_6$  and  $h_7$

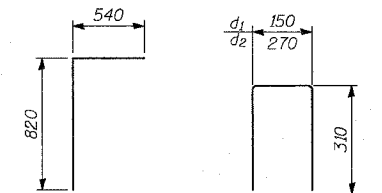


BAR S

BAR S1



BARS  $a_1$



BAR d

BARS  $d_1$  and  $d_2$

BILL OF MATERIAL

Bar	No.	Size	Length (m)	Shape
$a_1$	404	#25	4.67	U
$a_2$	59	#13	4.11	—
d	28	#13	1.36	U
$d_1$	4	#13	0.77	—
$d_2$	6	#13	0.89	—
h	52	#22	8.61	—
$h_1$	104	#16	8.43	—
$h_2$	56	#22	2.40	—
$h_3$	16	#19	4.34	—
$h_4$	22	#22	5.27	—
$h_5$	22	#22	4.12	—
$h_6$	32	#19	9.40	—
$h_7$	32	#19	7.60	—
$h_8$	2	#16	3.34	—
$h_9$	2	#16	4.14	—
s	14	#13	1.45	□
$s_1$	14	#13	1.40	□
v	368	#13	2.52	—
$v_1$	16	#13	3.37	—
Concrete Box Culverts	CU M	107		
Reinforcement Bars	KG	13,960		
Bar Splicers	EACH	55		
Steel Plate Beam Guard Rail, Attached to Structures	METER	8.4		

TYLIN INTERNATIONAL

DESIGNED	MI, MAF
CHECKED	TD
DRAWN	MAF
CHECKED	TD, MI
DATE	03-22-2004

CULVERT SECTIONS AND DETAILS

IL ROUTE 22 OVER  
KILDEER CREEK  
FAP 337 SECTION 28R-5  
LAKE COUNTY  
STA. 100+978.642  
S.N. 049-C003