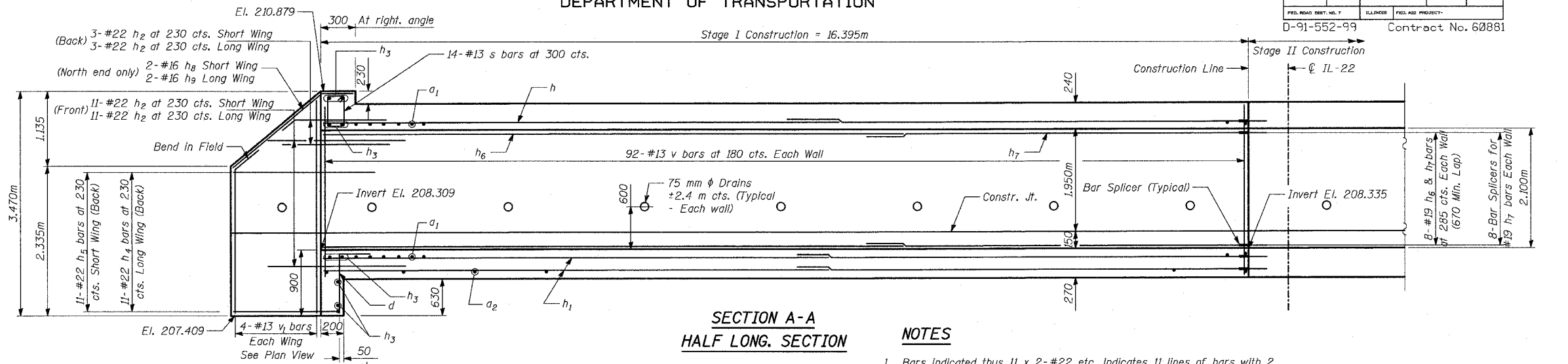


STATE OF ILLINOIS
DEPARTMENT OF TRANSPORTATION

FAP	SECTION	COUNTY	POST MILE	SHEET
337	20R-5	LAKE	562	429
FED. ROAD DIST. NO. 7		ILLINOIS	FED. AID PROJECT	
D-91-552-99		Contract No. 60881		

SHEET NO. 3

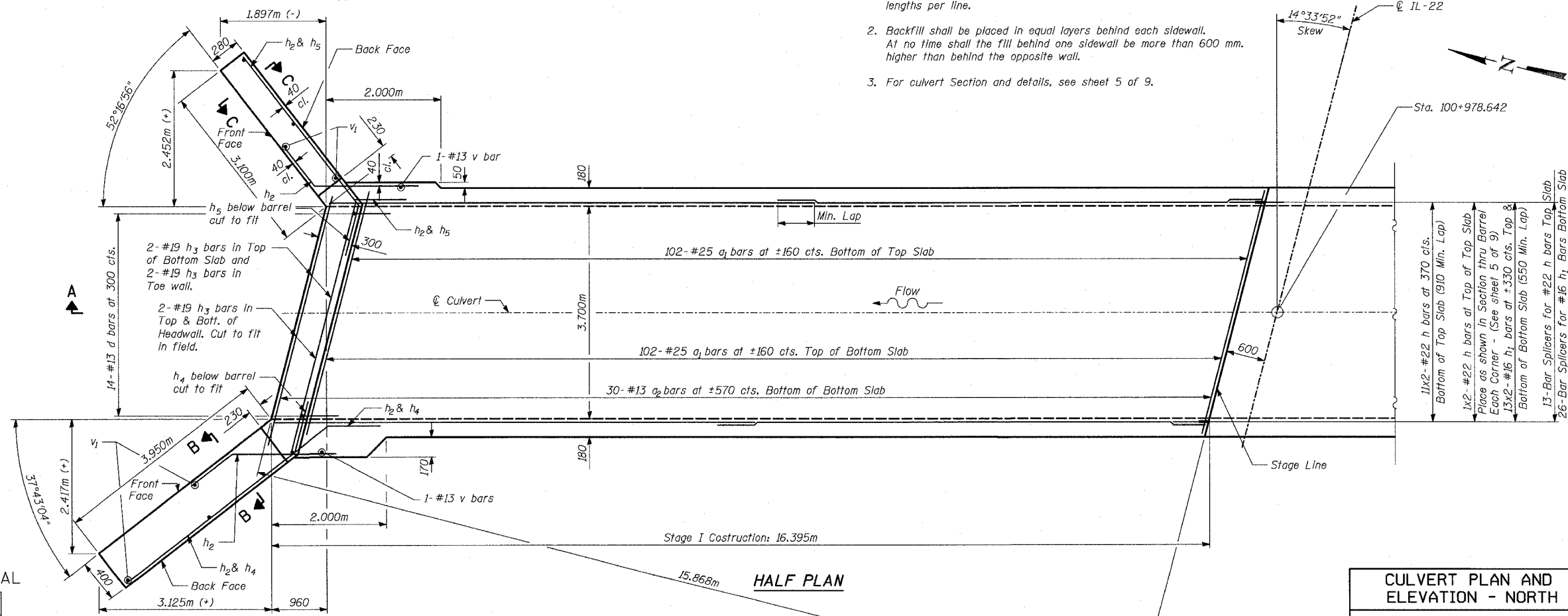
9 SHEETS



SECTION A-A
HALF LONG. SECTION

NOTES

1. Bars indicated thus 11 x 2-#22 etc. Indicates 11 lines of bars with 2 lengths per line.
2. Backfill shall be placed in equal layers behind each sidewall. At no time shall the fill behind one sidewall be more than 600 mm. higher than behind the opposite wall.
3. For culvert Section and details, see sheet 5 of 9.



HALF PLAN

TYLINT INTERNATIONAL

DESIGNED	MI, MAF
CHECKED	TD
DRAWN	MAF
CHECKED	TD, MI
DATE	03-22-2004

CULVERT PLAN AND ELEVATION - NORTH

IL ROUTE 22 OVER
KILDEER CREEK
FAP 337 SECTION 20R-5
LAKE COUNTY
STA. 100+978.642
S.N. 049-C003