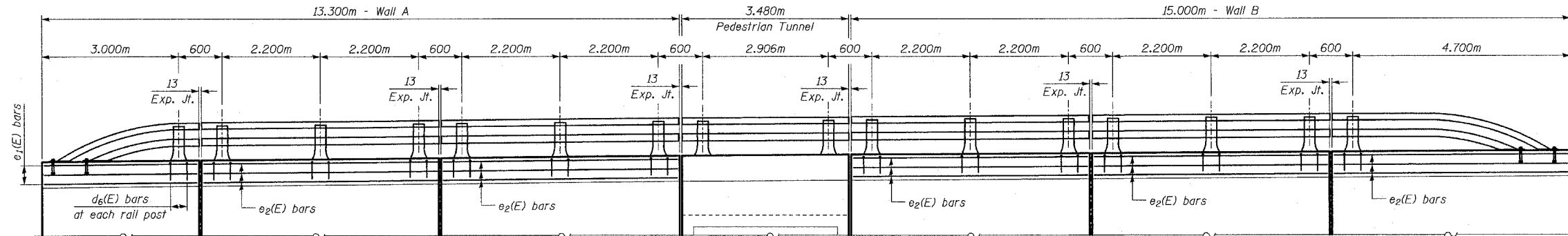


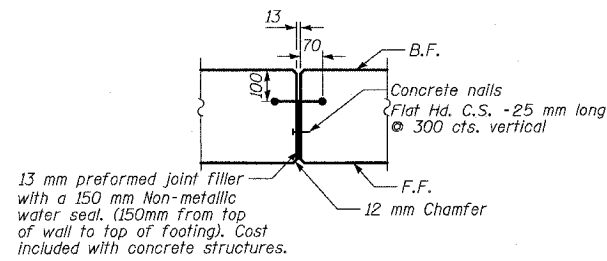
STATE OF ILLINOIS  
DEPARTMENT OF TRANSPORTATION

FWP	DISTRICT	COUNTY	SECTION	SHEET	SHEET NO. 9 13 SHEETS
337	20R-5	LAKE	562	422	
FED. ROAD DIST. NO. 7		ILLINOIS		FED. AID PROJECT	
D-91-552-99		Contract No. 60881			

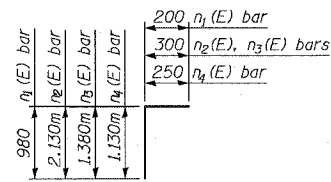


PARAPET ELEVATION

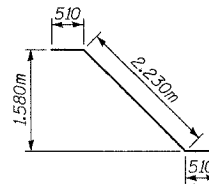
BILL OF MATERIAL



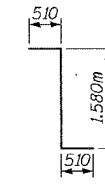
EXPANSION JOINT DETAIL



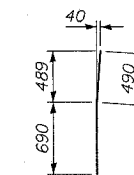
BARS  $n_1(E)$ ,  $n_2(E)$ ,  $n_3(E)$  and  $n_4(E)$



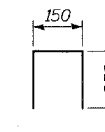
BAR  $w_2(E)$



BAR  $w_3(E)$



BAR  $d_4(E)$



BAR  $d_6(E)$

Bar	No.	Size	Length (m)	Shape
$d_4$	102	#16	1.18	—
$d_5$	102	#19	1.41	—
$d_6$	28	#16	0.61	—
$e_1$	6	#16	3.22	—
$e_2$	30	#16	4.92	—
$h_{12}$	13	#13	3.22	—
$h_{13}$	104	#13	4.92	—
$n_1$	102	#13	1.18	—
$n_2$	70	#19	2.43	—
$n_3$	36	#19	1.68	—
$n_4$	30	#16	1.38	—
$f_1$	30	#16	2.27	—
$f_2$	36	#16	2.27	—
$f_3$	38	#19	2.95	—
$f_4$	44	#16	2.95	—
$f_5$	74	#19	3.80	—
$f_6$	44	#16	3.80	—
$v_6$	12	#13	2.05	—
$v_7$	12	#16	2.05	—
$v_8$	18	#13	3.28	—
$v_9$	18	#16	3.28	—
$v_{10}$	18	#13	4.53	—
$v_{11}$	18	#16	4.53	—
$v_{12}$	18	#13	4.60	—
$v_{13}$	18	#16	4.60	—
$v_{14}$	18	#13	3.42	—
$v_{15}$	18	#16	3.42	—
$v_{16}$	18	#13	2.25	—
$v_{17}$	18	#16	2.25	—
$w_1$	18	#16	3.22	—
$w_2$	40	#16	3.25	—
$w_3$	40	#16	2.60	—
$w_4$	118	#16	5.20	—
Protective Coat		SQ M	123	
Concrete Structures		CU M	100	
Reinforcement Bars, Epoxy Coated		KG	5,960	

NOTES

1. Reinforcement bars designated (E) shall be epoxy coated.

LEGEND

F.F. Denotes Front Face.  
B.F. Denotes Back Face.  
E.F. Denotes Each Face

TYLIN INTERNATIONAL

DESIGNED	DJR
CHECKED	TD
DRAWN	DJR, TB
CHECKED	TD, MI
DATE	03-22-2004

RETAINING WALL DETAILS

IL ROUTE 22 OVER  
PEDESTRIAN TUNNEL  
FAP 337 SECTION 20R-5  
LAKE COUNTY  
STA. 100+775.000  
S.N. 049-T016