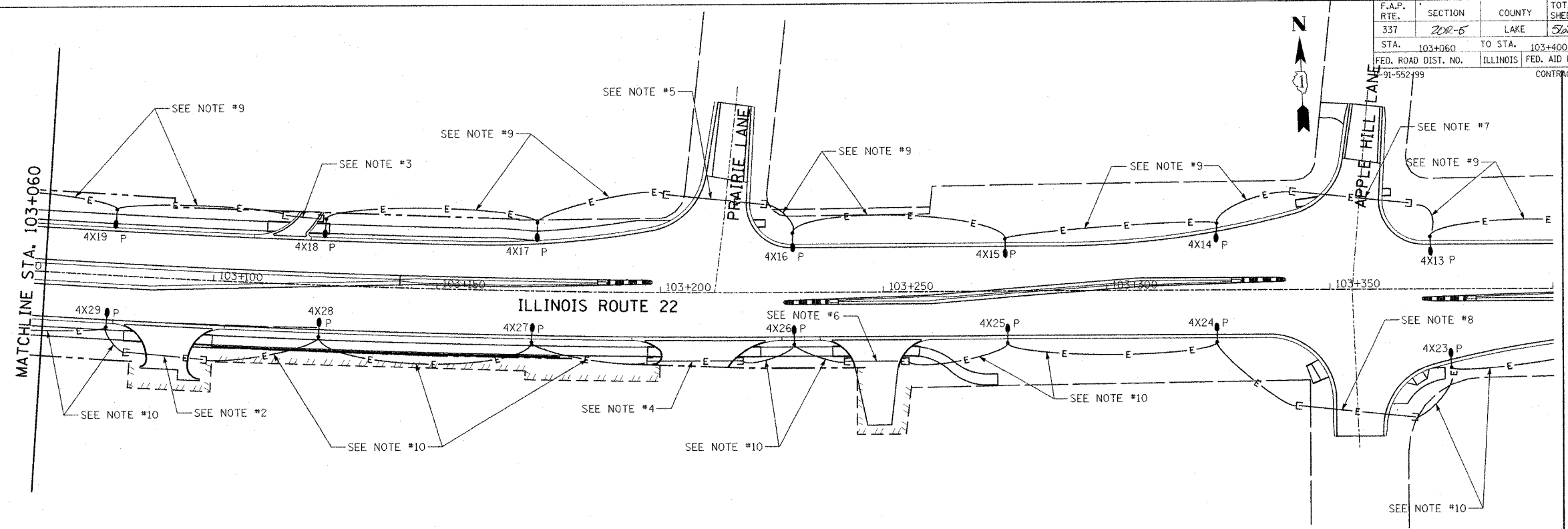


F.A.P. RTE.	SECTION	COUNTY	TOTAL SHEETS	SHEET NO.
337	202-5	LAKE	562	406
STA. 103+060	TO STA. 103+400			
FED. ROAD DIST. NO.	ILLINOIS	FED. AID PROJECT		
91-552-99		CONTRACT #60881		

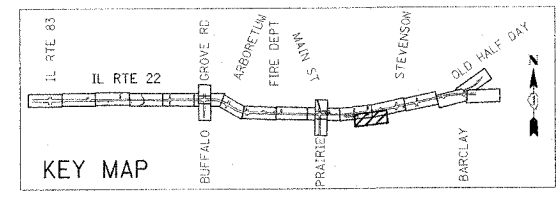


FINAL SURVEYED	BY	DATE
SURVEY PLOTTED		
NOTE BOOK		
AREAS CHECKED		
NO.		

ORIGINAL SURVEYED	BY	DATE
SURVEY PLOTTED		
NOTE BOOK		
AREAS CHECKED		
NO.		

**NOTES:**

- EXACT LOCATIONS OF RELOCATED AND PROPOSED POLES AND CONDUIT/CABLE ROUTINGS SHALL BE COORDINATED WITH UNDERGROUND UTILITIES, OWNER AND ENGINEER. LOCATIONS AND ROUTING SHOWN ON PLANS ARE APPROXIMATE.
- PROPOSED 100mm TRENCHED GRS CONDUIT (19m) WITH: 2\*4, 1\*8 GND. (CCT 2) IN 50mm UNIT DUCT
- PROPOSED 100mm TRENCHED GRS CONDUIT (9m) WITH: 2\*4, 1\*8 GND. (CCT 1) IN 50mm UNIT DUCT
- PROPOSED 100mm TRENCHED GRS CONDUIT (21m) WITH: 2\*4, 1\*8 GND. (CCT 2) IN 50mm UNIT DUCT
- PROPOSED 100mm PUSHED GRS CONDUIT (23m) WITH: 2\*4, 1\*8 GND. (CCT 1) IN 50mm UNIT DUCT
- PROPOSED 100mm TRENCHED GRS CONDUIT (15m) WITH: 2\*4, 1\*8 GND. (CCT 2) IN 50mm UNIT DUCT
- PROPOSED 100mm PUSHED GRS CONDUIT (27m) WITH: 2\*4, 1\*8 GND. (CCT 3) IN 50mm UNIT DUCT
- PROPOSED 100mm PUSHED GRS CONDUIT (27m) WITH: 2\*4, 1\*8 GND. (CCT 4) IN 50mm UNIT DUCT
- PROPOSED 2\*4, 1\*8 GND. (CCT 1) IN 50mm UNIT DUCT.
- PROPOSED 2\*4, 1\*8 GND. (CCT 2) IN 50mm UNIT DUCT.



REVISIONS		ILLINOIS DEPARTMENT OF TRANSPORTATION IL RTE 22 (FAP 337) IL RTE 83 TO US 45 / IL 21 (MILWAUKEE AVE)  PROPOSED LIGHTING PLAN (7 OF 10) STA. 103+060 TO STA. 103+400
NAME	DATE	
		SCALE: 1:500
		DATE: 03-22-2004
		DRAWN BY: CMW
		CHECKED BY: MAR

C:\p10\10321001.dwg 03/22/04 12:14:24 PM