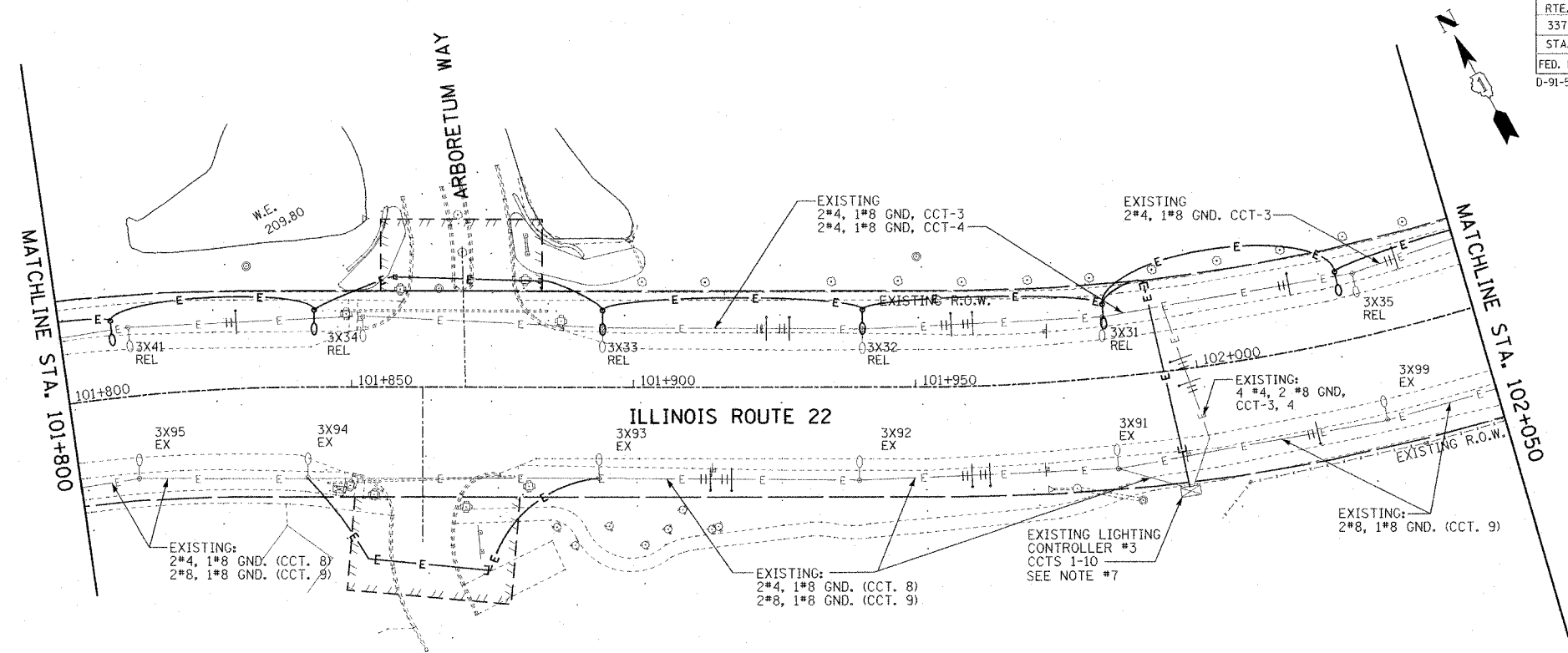


F.A.P. RTE.	SECTION	COUNTY	TOTAL SHEETS	SHEET NO.
337	20R-5	LAKE	562	398
STA. 101+800		TO STA. 102+050		
FED. ROAD DIST. NO.		ILLINOIS FED. AID PROJECT		
D-91-552-99		CONTRACT #60881		

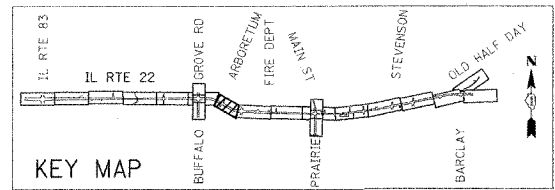
FINAL SURVEY	BY	DATE
SURVEYED		
PLOTTED		
NOTE BOOK		
TEMPLATE		
AREAS CHECKED		
NO.		

ORIGINAL SURVEY	BY	DATE
SURVEYED		
PLOTTED		
NOTE BOOK		
TEMPLATE		
AREAS CHECKED		
NO.		



DEMOLITION NOTES

- EXISTING LIGHTING SHALL REMAIN IN OPERATION UNTIL PROPOSED FOUNDATIONS, CONDUITS AND WIRING ARE INSTALLED AND READY FOR EXISTING LIGHT POLES TO BE RELOCATED AND PUT INTO OPERATION.
- CONTRACTOR SHALL PROTECT EXISTING LIGHT POLES AND FIXTURES DURING CONSTRUCTION. ANY UNITS DAMAGED DURING CONSTRUCTION SHALL BE IMMEDIATELY REPAIRED OR REPLACED TO THE SATISFACTION OF THE OWNER AND THE ENGINEER.
- ONCE LIGHT POLES AND FIXTURES ARE COMPLETELY RELOCATED, CONTRACTOR SHALL REMOVE EXISTING CONDUITS, FOUNDATIONS, WIRING AND ASSOCIATED ACCESSORIES. AREA SHALL BE RESTORED AS REQUIRED.



REVISIONS	
NAME	DATE

ILLINOIS DEPARTMENT OF TRANSPORTATION
 IL RTE 22 (FAP 337)
 IL RTE 83 TO US 45 / IL 21 (MILWAUKEE AVE)
 LIGHTING DEMOLITION PLAN (3 OF 4)
 STA. 101+800 TO STA. 102+050

SCALE: 1:500
 DATE: 03-22-2004
 DRAWN BY: CMW
 CHECKED BY: MAR