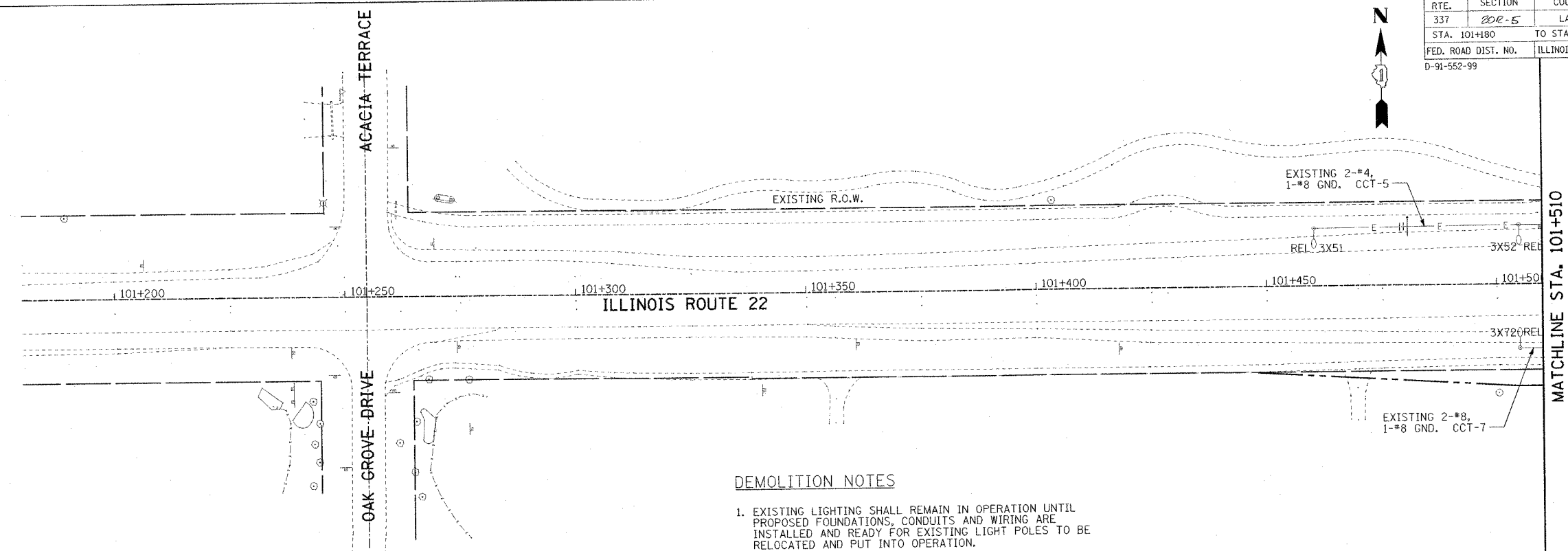


F.A.P. RTE.	SECTION	COUNTY	TOTAL SHEETS	SHEET NO.
337	202-5	LAKE	522	396
STA. 101+180	TO STA. 101+510			
FED. ROAD DIST. NO.	ILLINOIS	FED. AID PROJECT		
D-91-552-99		CONTRACT #60881		



FINAL SURVEYED SURVEY PLOTTED	BY	DATE
NOTE BOOK TEMPLATE AREAS CHECKED		
NO.		

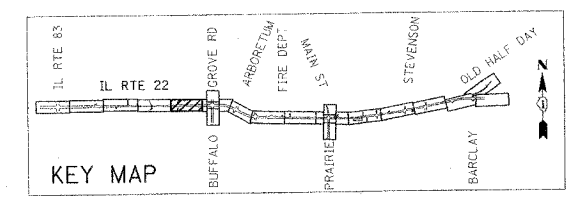
ORIGINAL SURVEYED SURVEY PLOTTED	BY	DATE
NOTE BOOK TEMPLATE AREAS CHECKED		
NO.		



DEMOLITION NOTES

- EXISTING LIGHTING SHALL REMAIN IN OPERATION UNTIL PROPOSED FOUNDATIONS, CONDUITS AND WIRING ARE INSTALLED AND READY FOR EXISTING LIGHT POLES TO BE RELOCATED AND PUT INTO OPERATION.
- CONTRACTOR SHALL PROTECT EXISTING LIGHT POLES AND FIXTURES DURING CONSTRUCTION. ANY UNITS DAMAGED DURING CONSTRUCTION SHALL BE IMMEDIATELY REPAIRED OR REPLACED TO THE SATISFACTION OF THE OWNER AND THE ENGINEER.
- ONCE LIGHT POLES AND FIXTURES ARE COMPLETELY RELOCATED, CONTRACTOR SHALL REMOVE EXISTING CONDUITS, FOUNDATIONS, WIRING AND ASSOCIATED ACCESSORIES. AREA SHALL BE RESTORED AS REQUIRED.

MATCHLINE STA. 101+510



REVISIONS		ILLINOIS DEPARTMENT OF TRANSPORTATION IL RTE 22 (FAP 337) IL RTE 83 TO US 45 / IL 21 (MILWAUKEE AVE) LIGHTING DEMOLITION PLAN (1 OF 4) OAK GROVE DRIVE TO STA. 101+510
NAME	DATE	
SCALE: 1:500		DRAWN BY: CMW
DATE: 03-22-2004		CHECKED BY: MAR