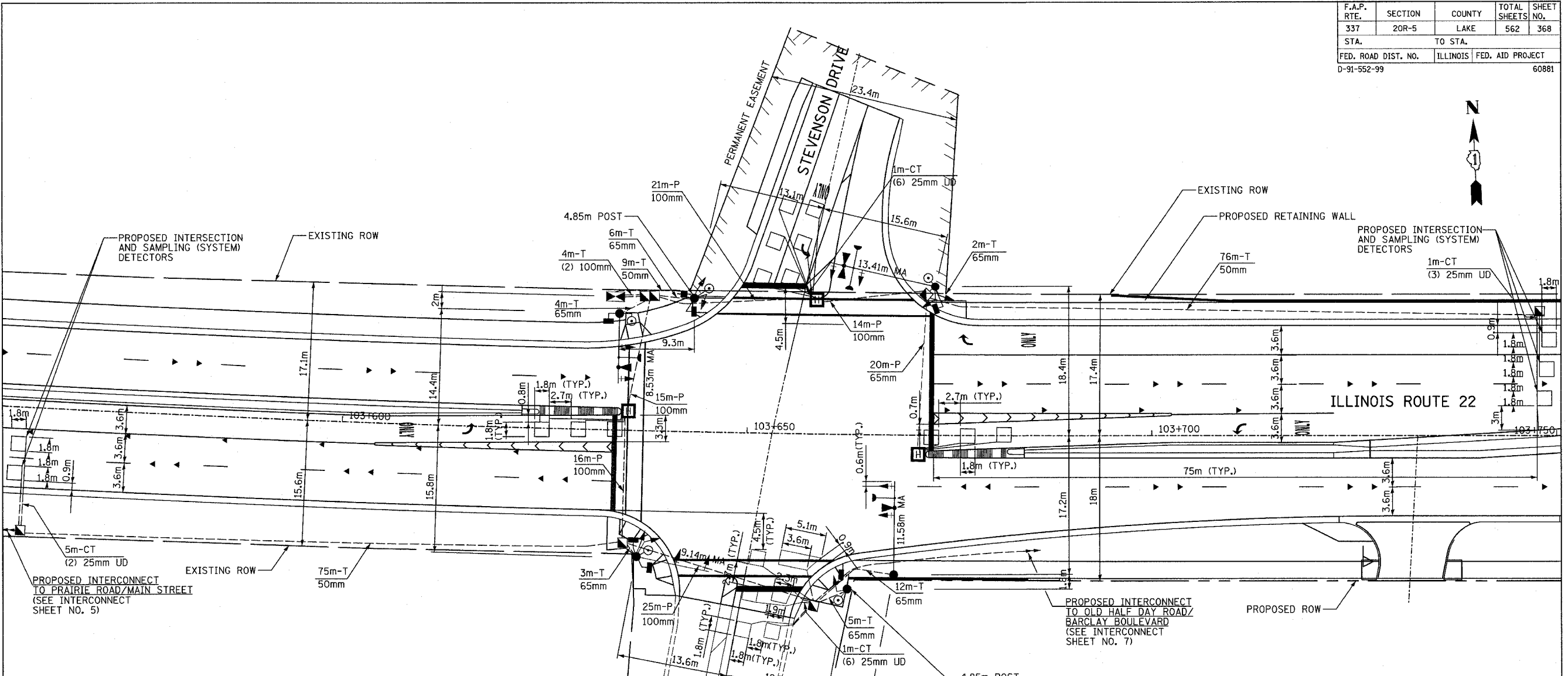


F.A.P. RTE.	SECTION	COUNTY	TOTAL SHEETS	SHEET NO.
337	20R-5	LAKE	562	368
STA.	TO STA.			
FED. ROAD DIST. NO.	ILLINOIS	FED. AID PROJECT		
D-91-552-99		60881		



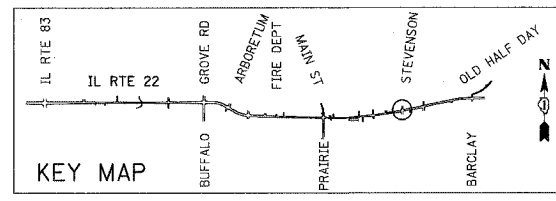
BY	DATE
FINAL SURVEY PLOTTED	
NOTE BOOK TEMPLATE	
AREAS CHECKED	
NO.	

BY	DATE
ORIGINAL SURVEY PLOTTED	
NOTE BOOK TEMPLATE	
AREAS CHECKED	
NO.	



PROPOSED		EXISTING		PROPOSED		EXISTING	
	CONTROLLER		CONTROLLER		DETECTOR LOOP		DETECTOR LOOP
	SERVICE INSTALLATION		SERVICE INSTALLATION		CAST IRON JUNCTION BOX		CAST IRON JUNCTION BOX
	SIGNAL HEAD		SIGNAL HEAD		EMERGENCY VEHICLE SYSTEM DETECTOR		EMERGENCY VEHICLE SYSTEM DETECTOR
	SIGNAL HEAD WITH BACKPLATE		SIGNAL HEAD WITH BACKPLATE		CONFIRMATION BEACON		CONFIRMATION BEACON
	SIGNAL HEAD, PEDESTRIAN		SIGNAL HEAD, PEDESTRIAN		SIGNAL HEAD OPTICALLY PROGRAMMED		SIGNAL HEAD OPTICALLY PROGRAMMED
	SIGNAL POST		SIGNAL POST		CONDUIT SPLICE		CONDUIT SPLICE
	MAST ARM ASSEMBLY AND POLE, STEEL		MAST ARM ASSEMBLY AND POLE, STEEL		WOOD POLE		WOOD POLE
	MAST ARM ASSEMBLY AND POLE, ALUMINUM		MAST ARM ASSEMBLY AND POLE, ALUMINUM		RACEWAY FOR MAGNETIC DETECTOR, TYPE I OR TYF		RACEWAY FOR MAGNETIC DETECTOR, TYPE I OR TYF
	COMMON TRENCH		COMMON TRENCH		VEHICLE DETECTOR, NON COMPENSATED, MAGNETIC		VEHICLE DETECTOR, NON COMPENSATED, MAGNETIC
	UNIT DUCT		UNIT DUCT		RAILROAD CONTROL CABIN		RAILROAD CONTROL CABIN
	HANDHOLE		HANDHOLE		ILLUMINATED SIGN, FIBER OPTIC "NO LEFT TURN"		ILLUMINATED SIGN, FIBER OPTIC "NO LEFT TURN"
	HEAVY DUTY HANDHOLE		HEAVY DUTY HANDHOLE		ILLUMINATED SIGN, FIBER OPTIC "NO RIGHT TURN"		ILLUMINATED SIGN, FIBER OPTIC "NO RIGHT TURN"
	DOUBLE HANDHOLE		DOUBLE HANDHOLE		TELEPHONE		TELEPHONE
	G.S. CONDUIT IN TRENCH OR PUSHED		G.S. CONDUIT IN TRENCH OR PUSHED				
	PEDESTRIAN PUSH-BUTTON DETECTOR		PEDESTRIAN PUSH-BUTTON DETECTOR				

THE TRAFFIC SIGNAL EQUIPMENT FOR THIS PROJECT SHALL BE "ECONOLITE" TO MATCH THE EXISTING ADJACENT SYSTEM.



REVISIONS	
NAME	DATE

ILLINOIS DEPARTMENT OF TRANSPORTATION
 IL RTE 22 (FAP 337)
 IL RTE 83 TO US 45 / IL 21 (MILWAUKEE AVE)
 TRAFFIC SIGNAL INSTALLATION PLAN
 ILLINOIS ROUTE 22 AT STEVENSON DRIVE

SCALE: 1:250
 DATE: 03-22-2004
 DRAWN BY: AMB
 DESIGNED BY: AMB
 CHECKED BY: JPS