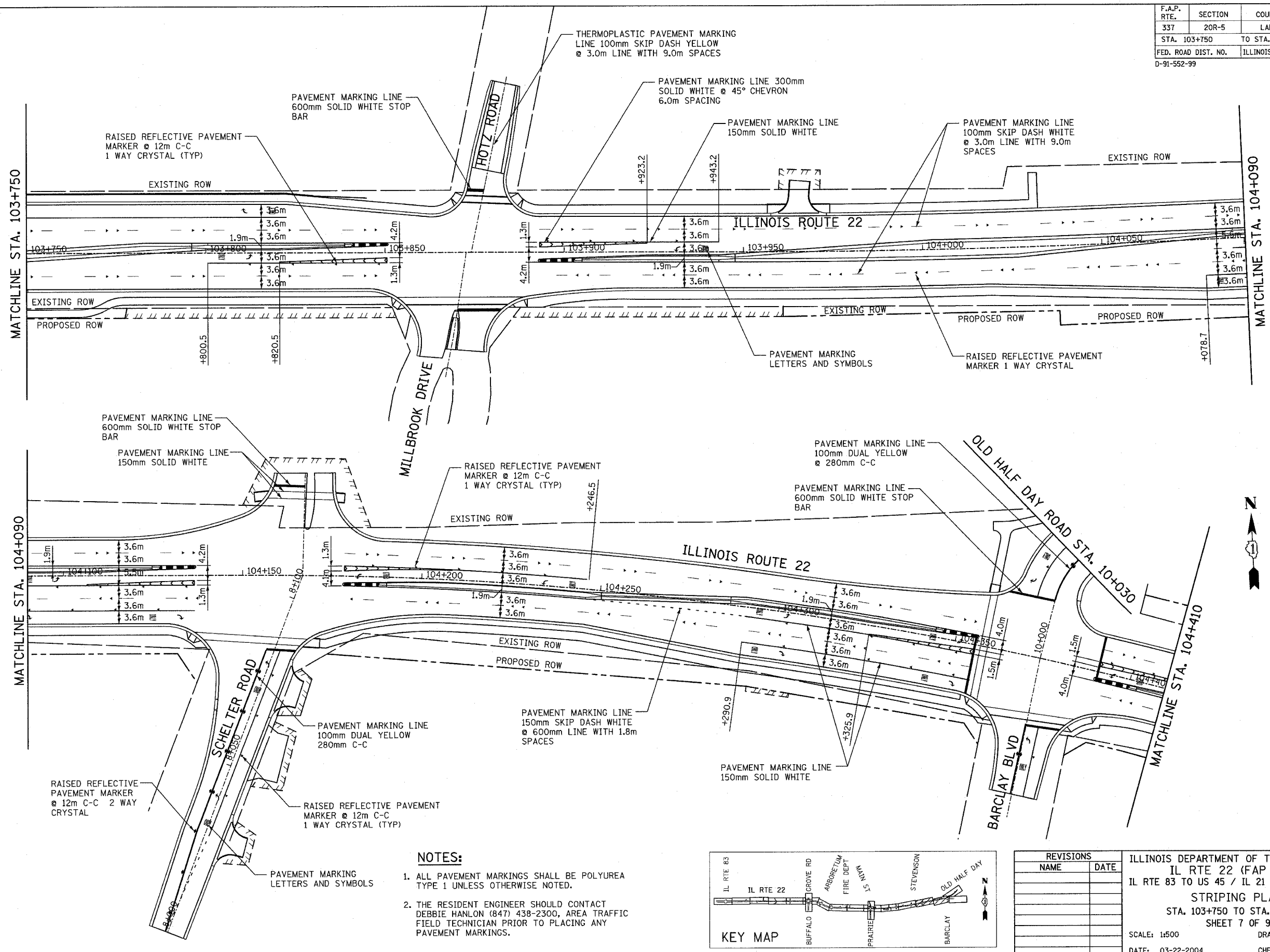


F.A.P. RTE.	SECTION	COUNTY	TOTAL SHEETS	SHEET NO.
337	20R-5	LAKE	562	295
STA. 103+750		TO STA. 104+450		
FED. ROAD DIST. NO.	ILLINOIS	FED. AID PROJECT		
D-91-552-99				60881

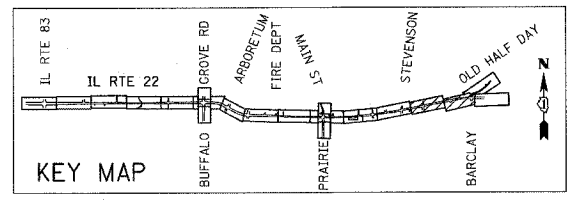


BY	DATE
FINAL SURVEY	SURVEYED
NOTE BOOK	PLOTTED
NO.	TEMPLATE
	AREAS CHECKED

BY	DATE
ORIGINAL SURVEY	SURVEYED
NOTE BOOK	PLOTTED
NO.	TEMPLATE
	AREAS CHECKED



- NOTES:**
1. ALL PAVEMENT MARKINGS SHALL BE POLYUREA TYPE 1 UNLESS OTHERWISE NOTED.
 2. THE RESIDENT ENGINEER SHOULD CONTACT DEBBIE HANLON (847) 438-2300, AREA TRAFFIC FIELD TECHNICIAN PRIOR TO PLACING ANY PAVEMENT MARKINGS.



REVISIONS	
NAME	DATE

ILLINOIS DEPARTMENT OF TRANSPORTATION
 IL RTE 22 (FAP 337)
 IL RTE 83 TO US 45 / IL 21 (MILWAUKEE AVE)
 STRIPING PLAN
 STA. 103+750 TO STA. 104+410
 SHEET 7 OF 9
 SCALE: 1:500
 DATE: 03-22-2004
 DRAWN BY: AMB
 CHECKED BY: JNR