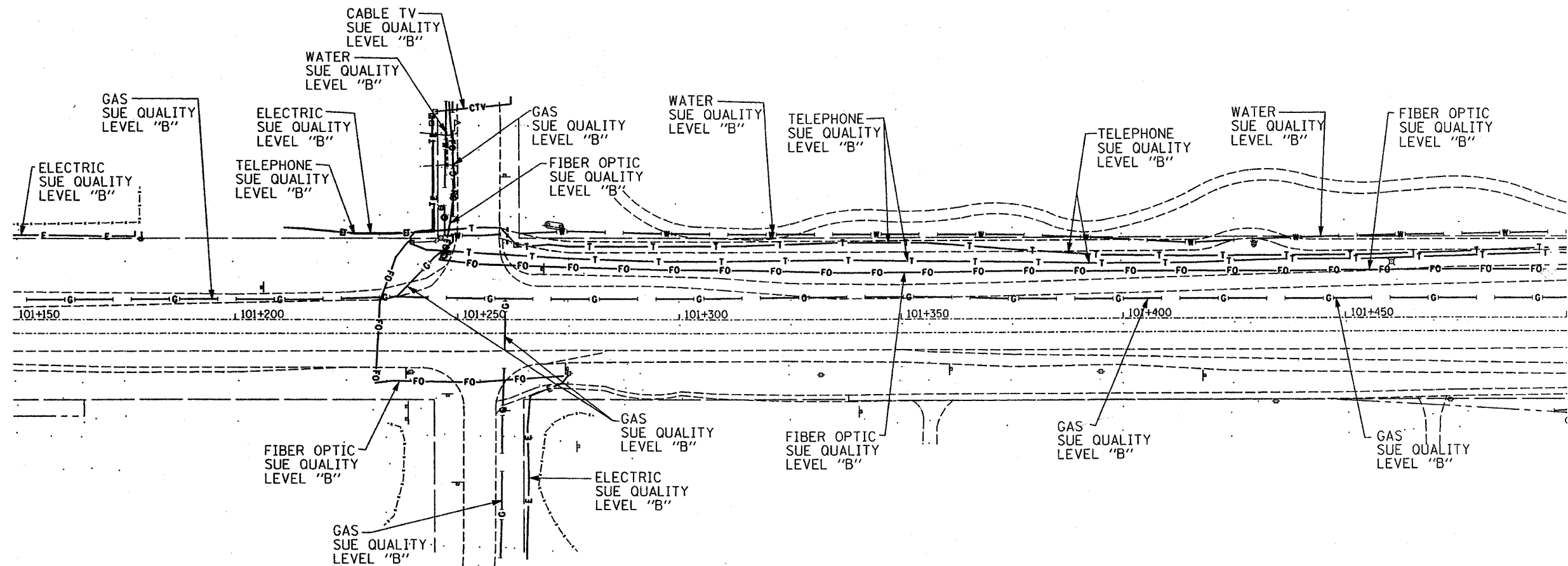
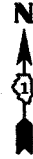


F.A.R. RTE.	SECTION	COUNTY	TOTAL SHEETS	SHEET NO.
	20-B-5	LAKE	362	251
STA.		TO STA.		
FED. ROAD DIST. NO.		ILLINOIS FED. AID PROJECT		

60881



— T — T —	TELEPHONE
— W — W —	WATER
— G — G —	GAS
— CTV — CTV — CTV	CABLE TELEVISION
— FO — FO — FO	FIBER OPTIC
— E — E —	ELECTRIC

**TBE GROUP, INC.**  
 CIVIL ENGINEERING \* TRANSPORTATION \* ENVIRONMENTAL  
 \* PLANNING \* UTILITY ENGINEERING/LOCATING  
 SOUTHERN REGION: FL, GA, SC, NC  
 NORTHERN REGION: IL, IN, MI, OH, MD, NJ, NY  
 PA, VA, CANADA  
 WESTERN REGION: AZ, NV, NM, TX, CA, OR, UT, WA

TBE SUE PAGE 5 of 11  
 Signature: *[Handwritten Signature]*  
 IL 09500133-IL 09500134  
 SUE Quality Level "A" : Test Holes  
 SUE Quality Level "B" : Designating



205 W. WACKER DRIVE  
 SUITE 1020  
 CHICAGO, IL 60606  
 (312) 704-1970

Utility shown on these plans as depicted in the legend have been investigated by TBE Group, Inc in accordance with SUE Industry Standards as of 8/8/01.  
 All other information shown has been provided to TBE Group, Inc by others.

REVISIONS		ILLINOIS DEPARTMENT OF TRANSPORTATION
NAME	DATE	
		RT 337 / IL RT 22 EAST OF IL RT 83 TO WEST OF US RT 45 / IL RT 21
		SCALE : 1:500
		DATE - SOL "B" 8/16/02
		DRAWN BY - JAC
		CHECKED BY - RLC